



CD / DVD RW drive by why! Replace W253EU (German)

Replacing the CD / DVD RW drive

Written By: Felice Suglia

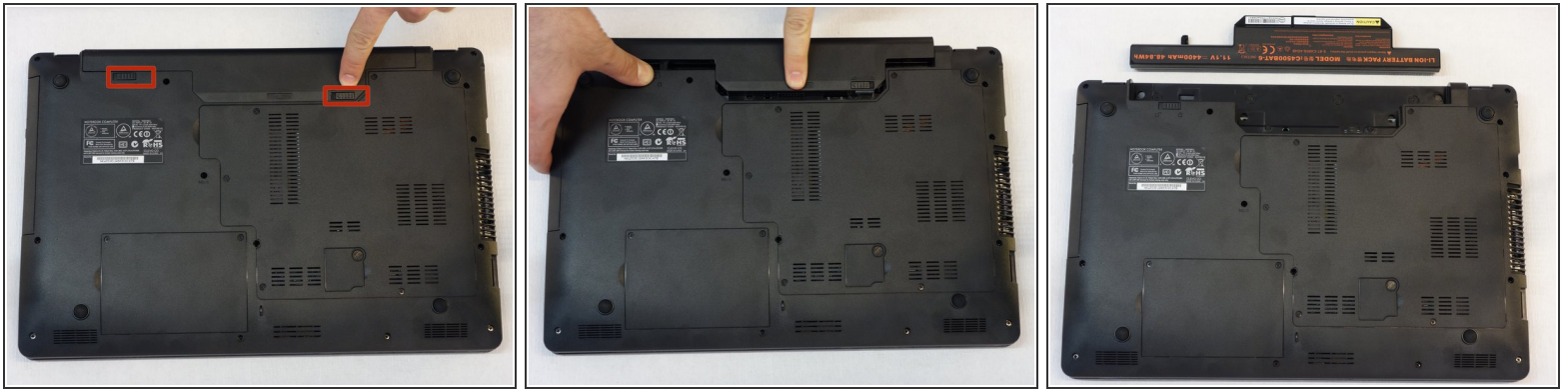




TOOLS:

- [Phillips #1 Screwdriver](#) (1)
-

Step 1 — Battery from why! Remove W253EU



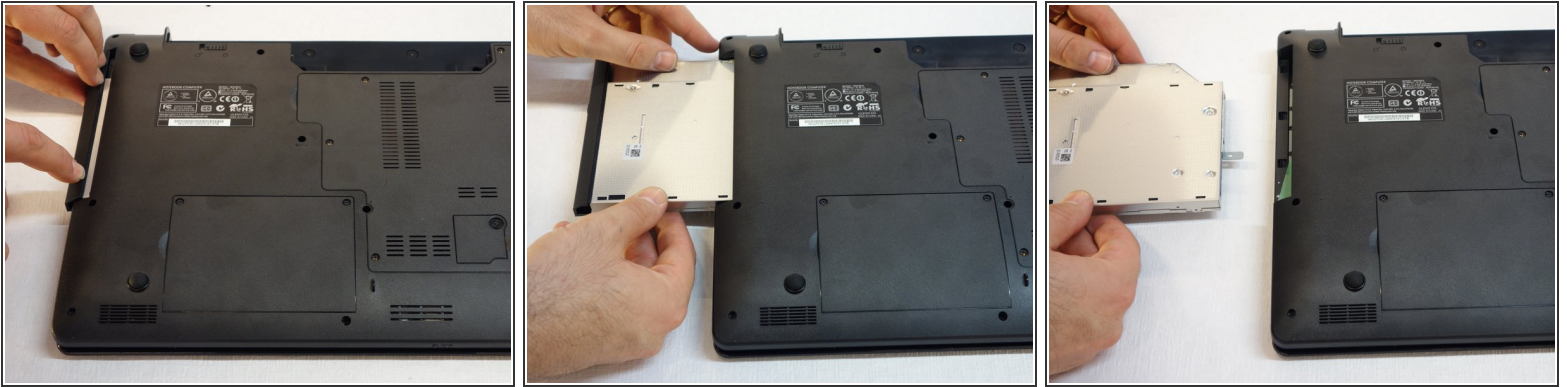
- Turn off the computer.
- ⓘ Before each operation it is important to start with the removal of the accumulator.
- Take the slide unlocked into position, remove the battery.

Step 2 — CD / DVD RW drive



- With the Philips # 1 screwdriver, unscrew the fixing screw of the CD / DVD drive.

Step 3



- Now carefully pull out the CD / DVD drive.

For reassembly, follow the instructions in reverse order.