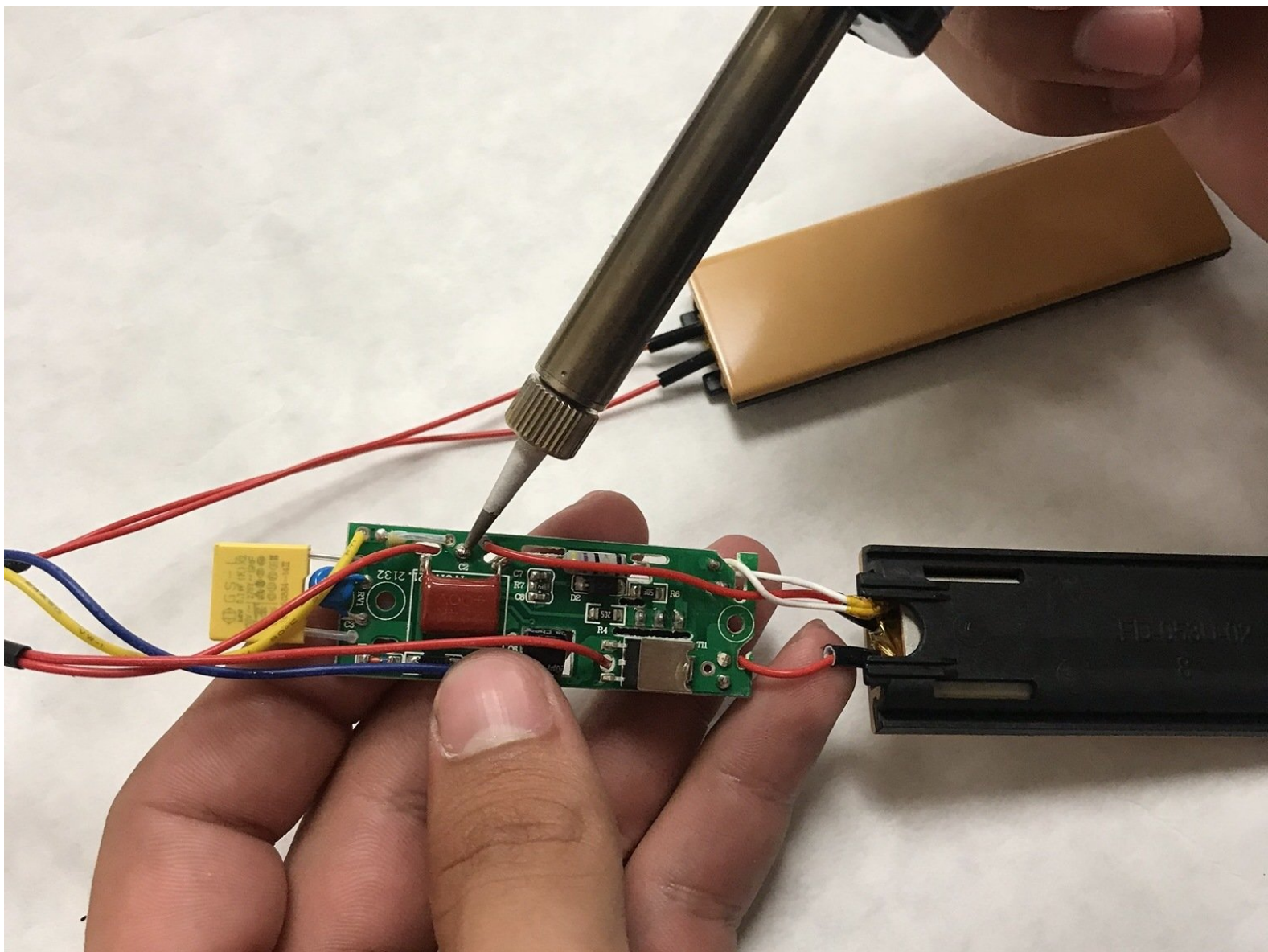




CHI Original Circuit Board Replacement

This guide will show you the steps necessary to deconstruct and replace the circuit board for this part.

Written By: Eric Knigga



INTRODUCTION

This guide will show you the steps necessary to deconstruct and replace the circuit board for this part.



TOOLS:

- [Phillips #1 Screwdriver](#) (1)
 - [ESD Safe Tweezers Blunt Nose](#) (1)
 - [Metal Spudger](#) (1)
 - [Soldering Workstation](#) (1)
-

Step 1 — Hinge Spring



- Insert a nylon or metal spudger under the plastic CHI spring covers. Pry them up to pop them off. Do this for each side.

Step 2



- Remove the .53" long screw from the hinge pin.

Step 3



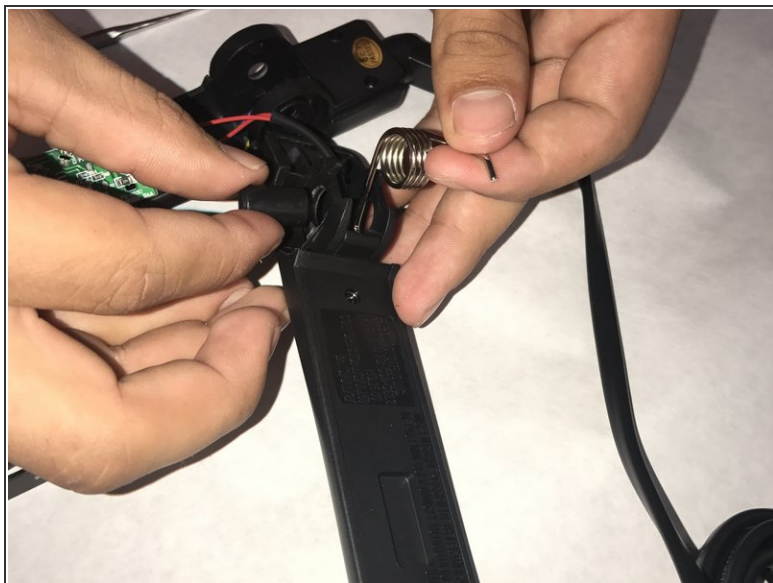
- Remove the hinge pin.

Step 4



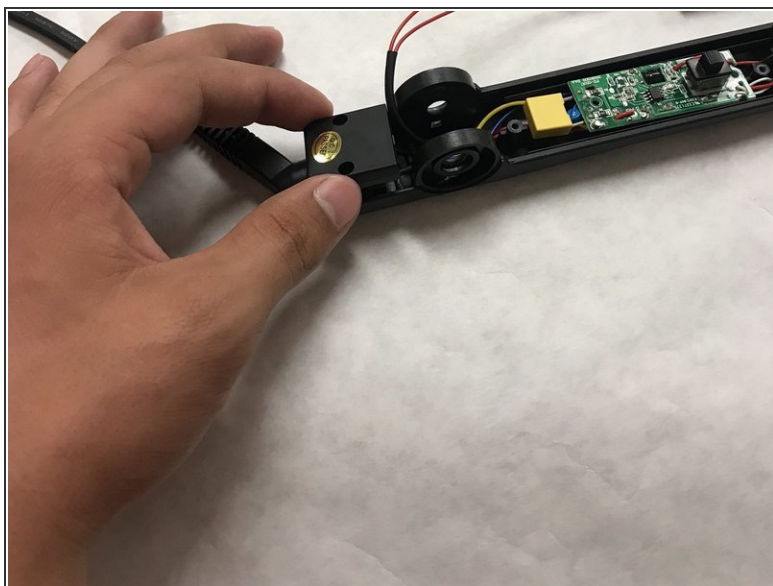
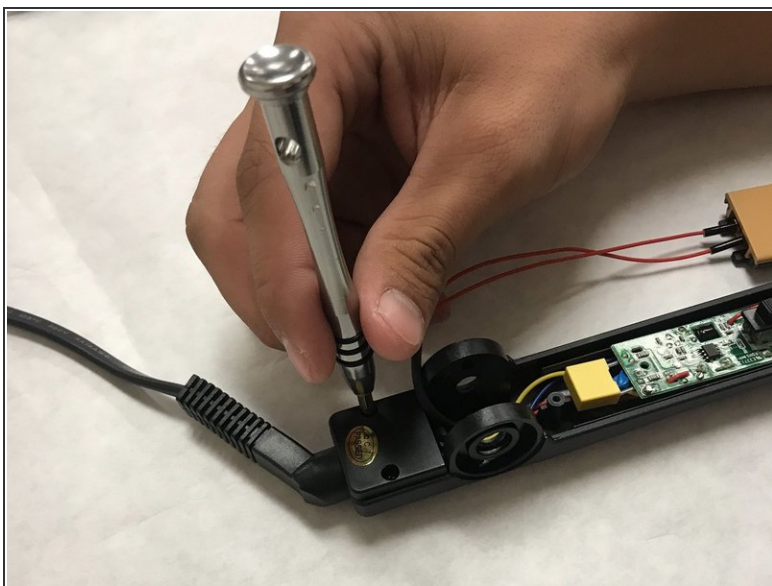
- Separate the two halves of the CHI Original.

Step 5



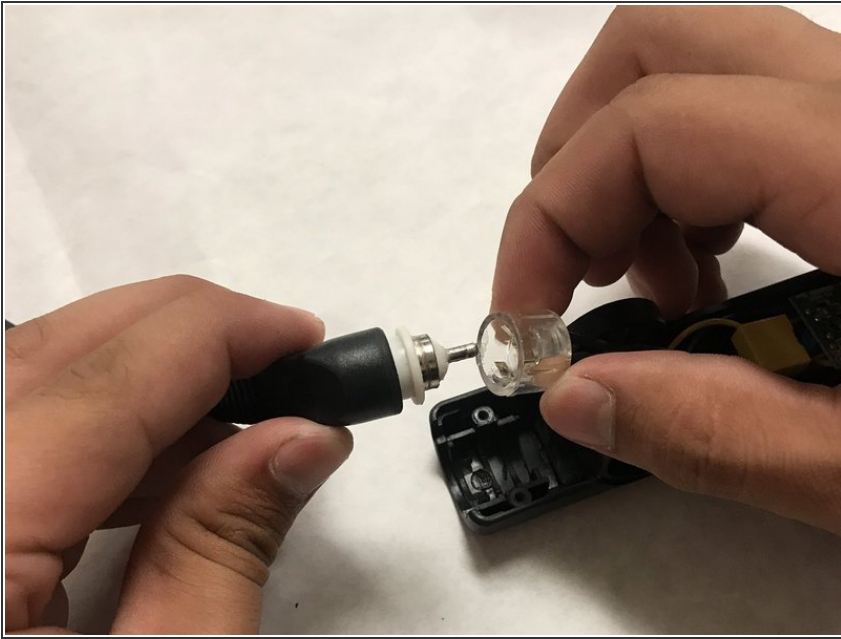
- Remove the spring pin with a pair of pliers or tweezers.
- Remove the spring.

Step 6 — Power Cord



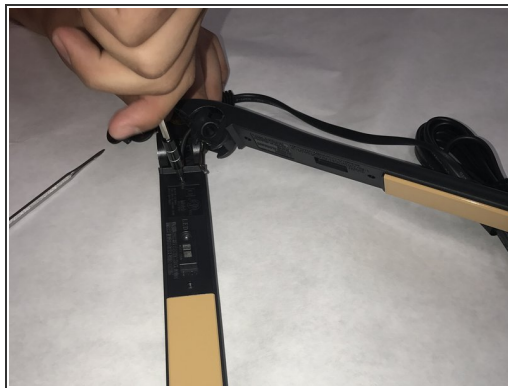
- Remove (2) .31" Phillips head screws from back cover.
- Remove cover.

Step 7



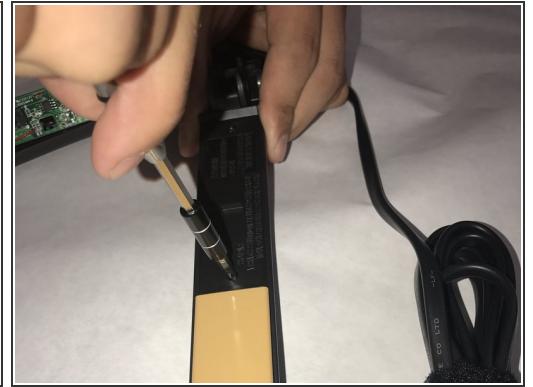
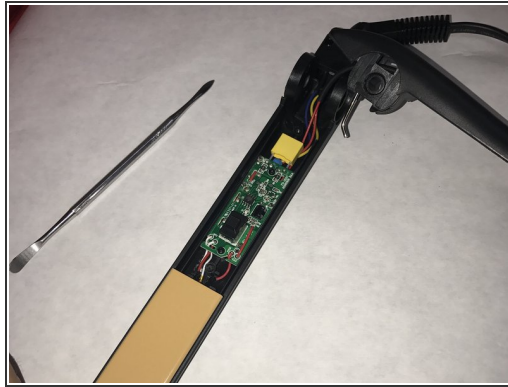
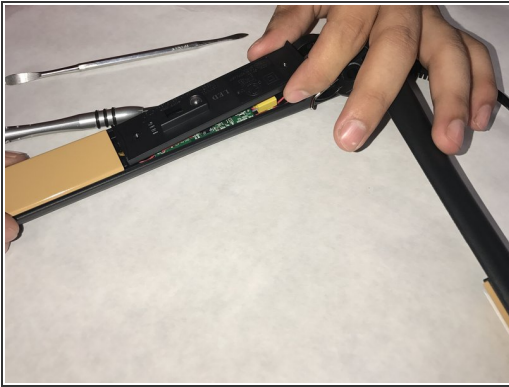
- Gently pull upwards on the connection point and disconnect the power cord.

Step 8 — Circuit Board



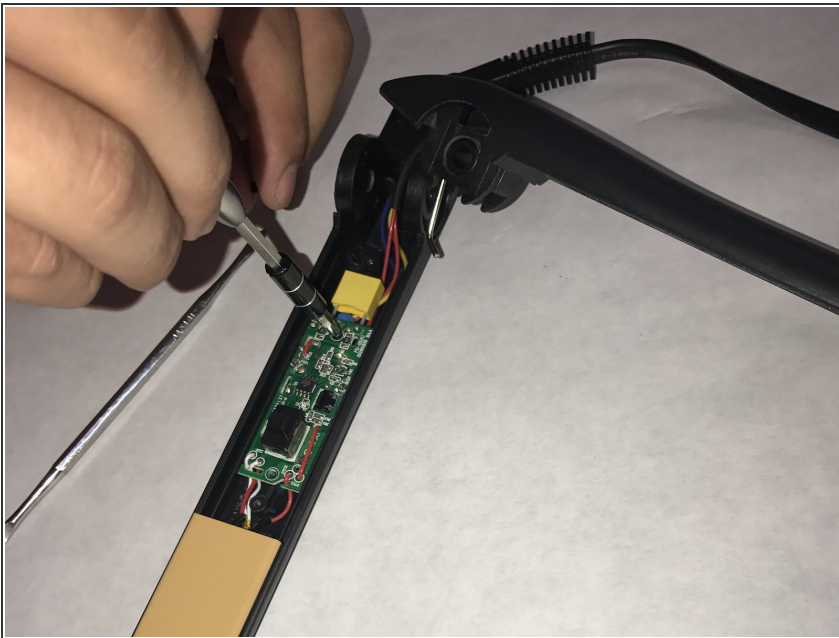
- Remove the (2) .27" Phillips head screws on each half of the CHI Original.

Step 9



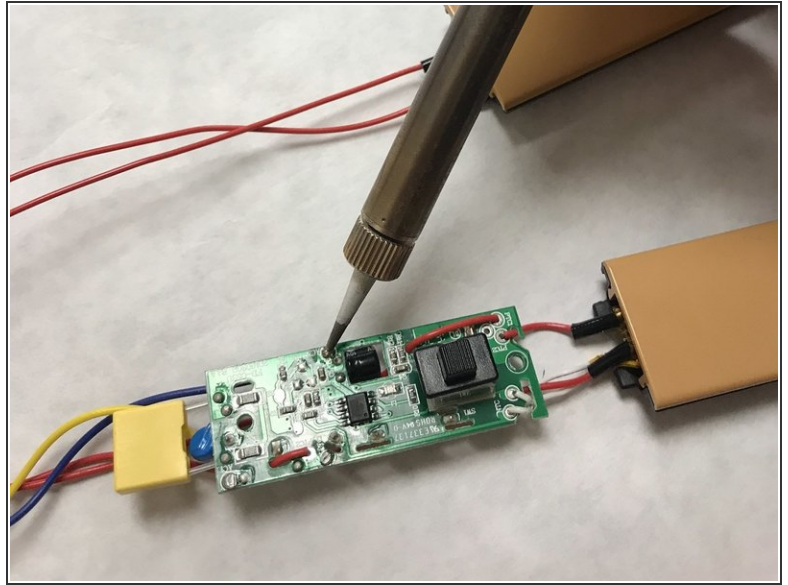
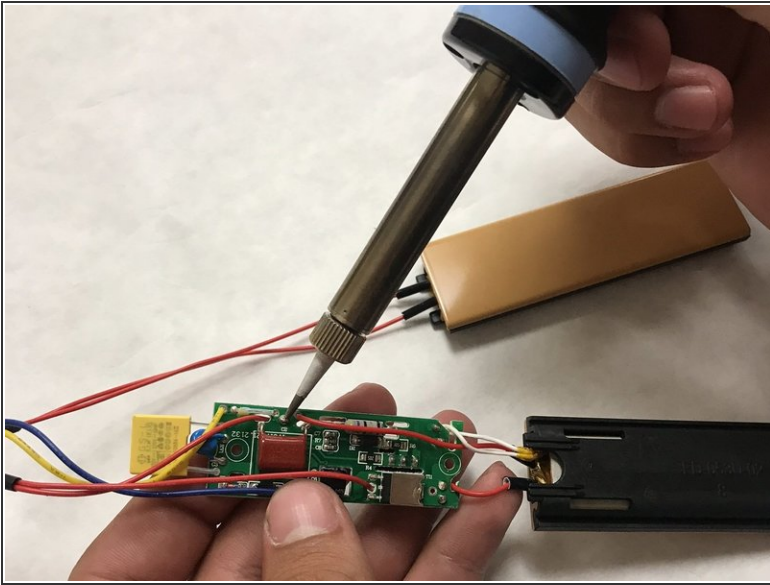
- Remove the covers on both halves.

Step 10



- Remove (2) .15" Phillips screws from the circuit board.

Step 11



- Desolder all points of contact between the circuit board and wires on the ceramic heating elements.

To reassemble your device, follow these instructions in reverse order.