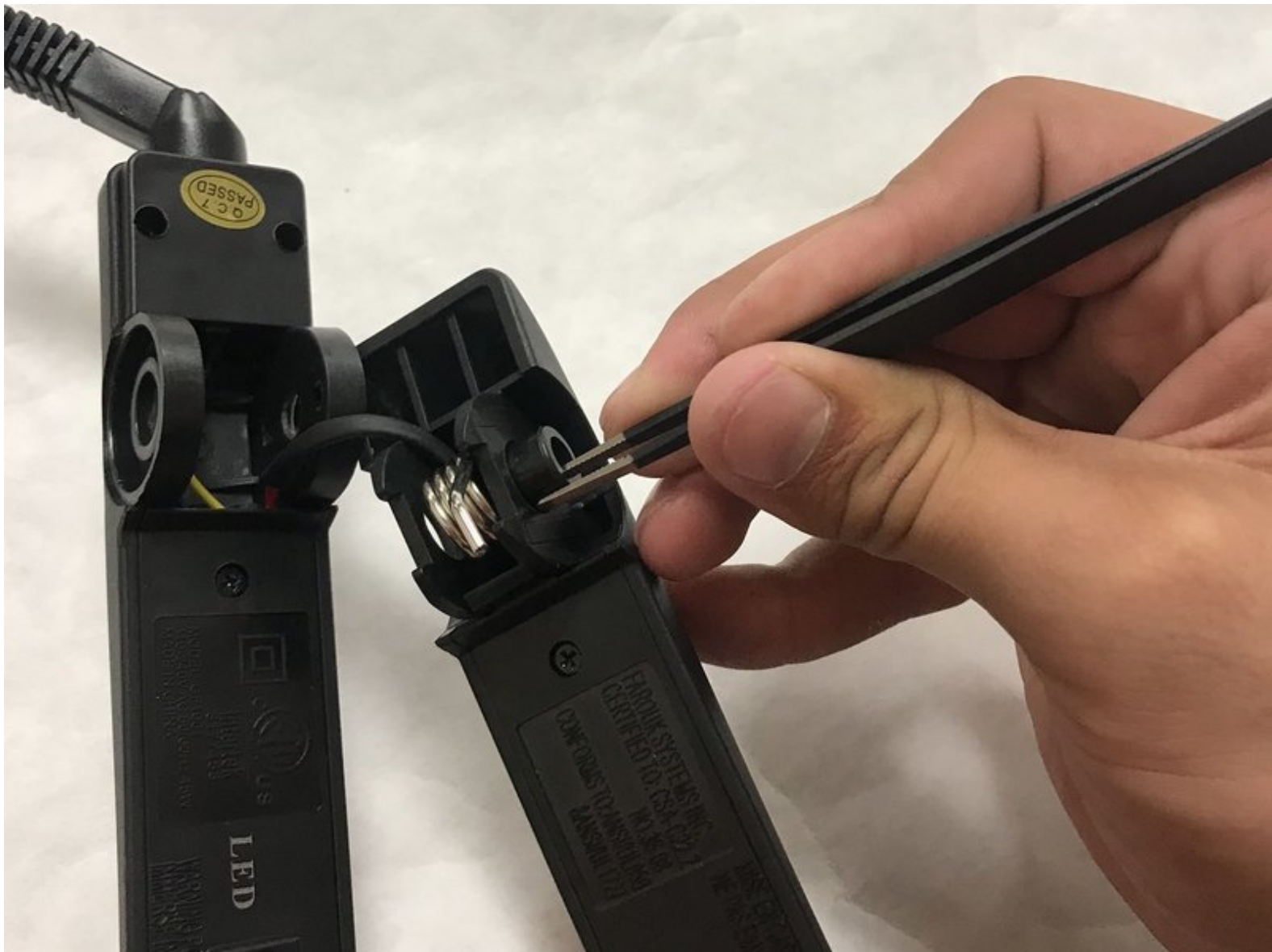




CHI Original Hinge Spring Replacement

This guide will show how to replace the hinge spring of your CHI Original.

Written By: Jaidy Hernandez-Sanchez



INTRODUCTION

This guide will show how to replace the hinge spring of your CHI Original.

TOOLS:

- [Phillips #1 Screwdriver](#) (1)
 - [Metal Spudger](#) (1)
 - [ESD Safe Tweezers Blunt Nose](#) (1)
-

Step 1 — Hinge Spring



- Insert a nylon or metal spudger under the plastic CHI spring covers. Pry them up to pop them off. Do this for each side.

Step 2



- Remove the .53" long screw from the hinge pin.

Step 3



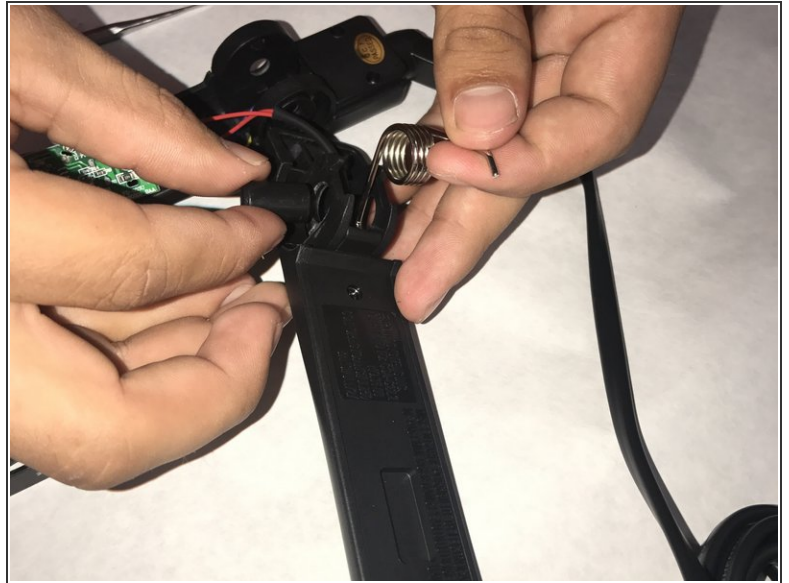
- Remove the hinge pin.

Step 4



- Separate the two halves of the CHI Original.

Step 5



- Remove the spring pin with a pair of pliers or tweezers.
- Remove the spring.

To reassemble your device, follow these instructions in reverse order.