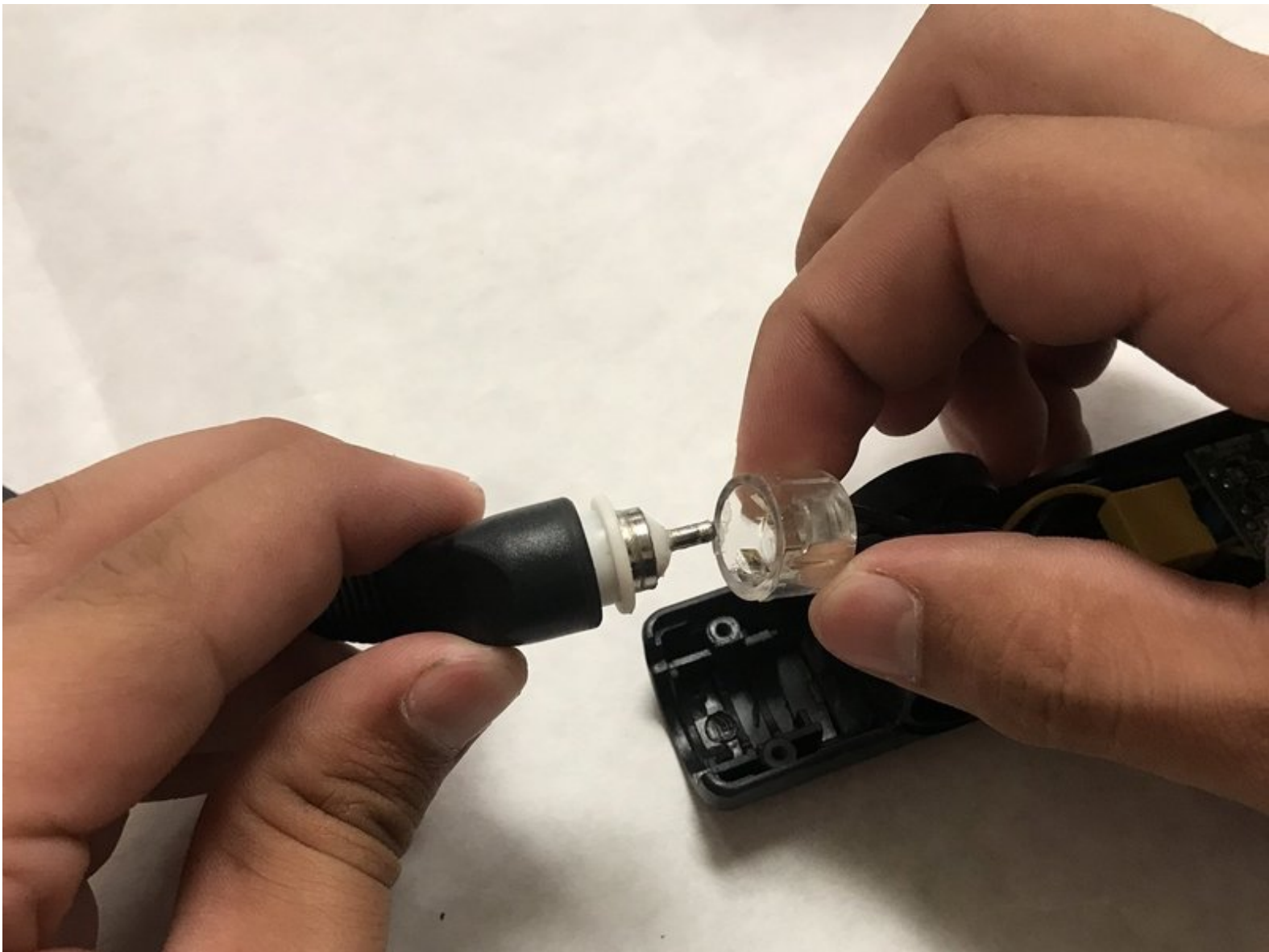




# CHI Original Power Cord Replacement

This guide will show you the steps necessary for deconstruction and replacement of the power cord.

Written By: Eric Knigga



# INTRODUCTION

This guide will show you the steps necessary for deconstruction and replacement of the CHI Original power cord.



## TOOLS:

- [Metal Spudger](#) (1)
  - [ESD Safe Tweezers Blunt Nose](#) (1)
  - [Phillips #1 Screwdriver](#) (1)
-

## Step 1 — Hinge Spring



- Insert a nylon or metal spudger under the plastic CHI spring covers. Pry them up to pop them off. Do this for each side.

## Step 2



- Remove the .53" long screw from the hinge pin.

### Step 3



- Remove the hinge pin.

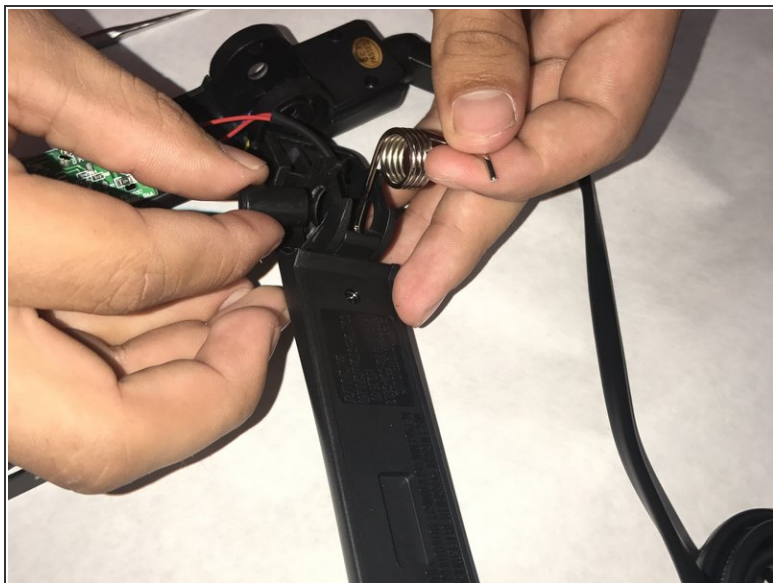
### Step 4



- Separate the two halves of the CHI Original.

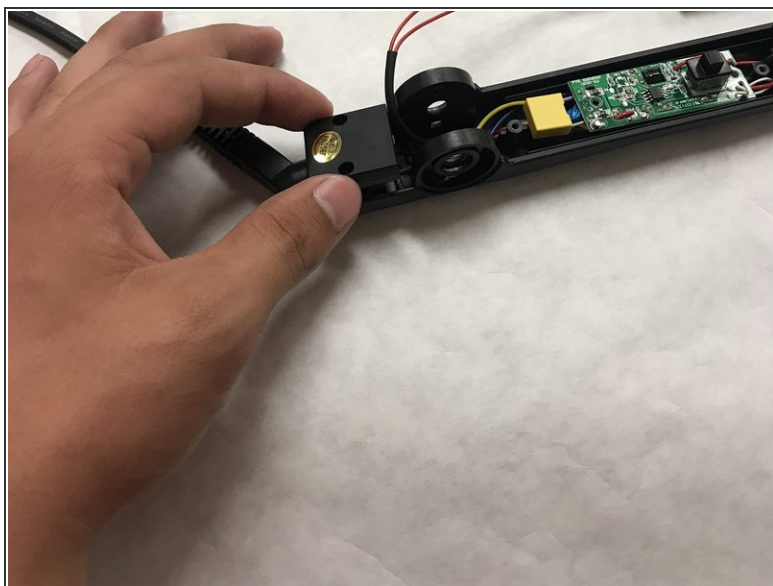
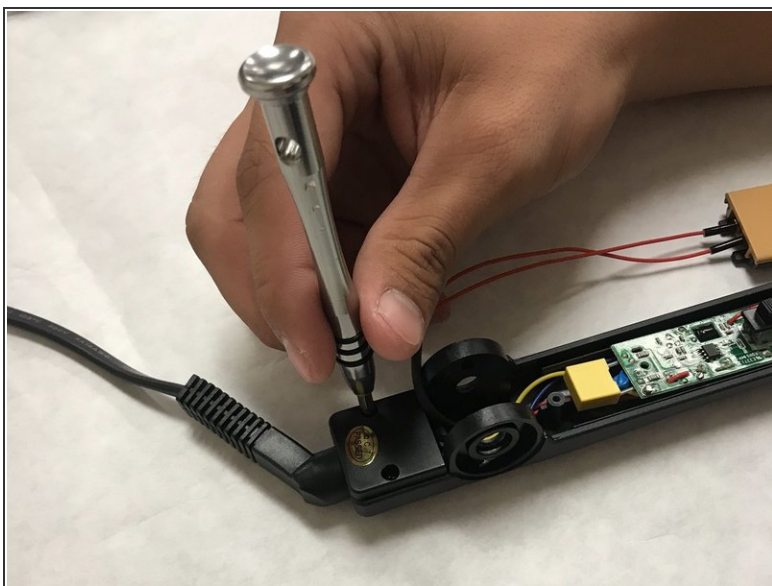


## Step 5



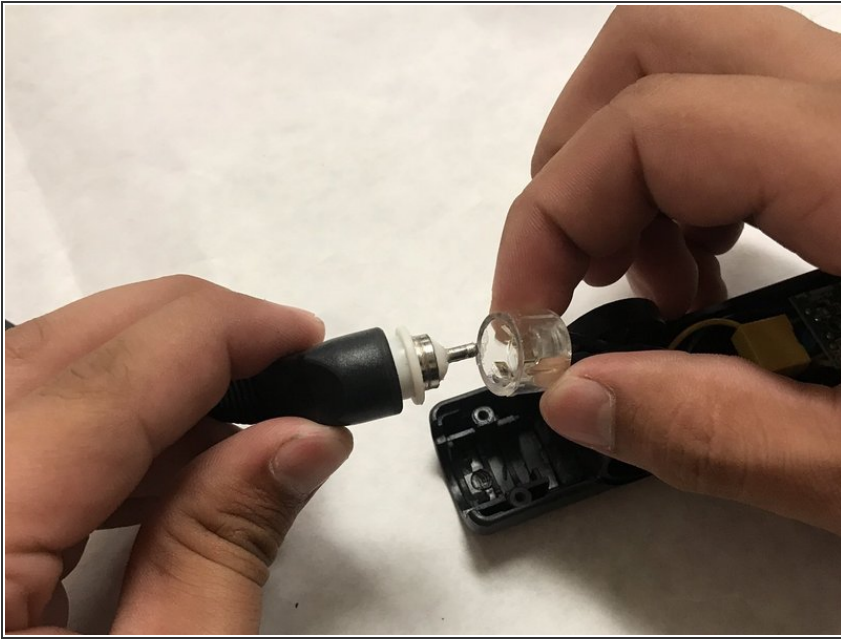
- Remove the spring pin with a pair of pliers or tweezers.
- Remove the spring.

## Step 6 — Power Cord



- Remove (2) .31" Phillips head screws from back cover.
- Remove cover.

## Step 7



- Gently pull upwards on the connection point and disconnect the power cord.

To reassemble your device, follow these instructions in reverse order.