



CM Storm QuickFire Rapid Large Keycap Replacement

Replace your mechanical keyboard's large keycaps (spacebar, shift, enter, backspace) with this handy guide.

Written By: Shiva Empranthiri



INTRODUCTION

Replacing keycaps is one of the most common operations performed on a keyboard. Follow this guide to learn how to replace large keycaps on your mechanical keyboard.



TOOLS:

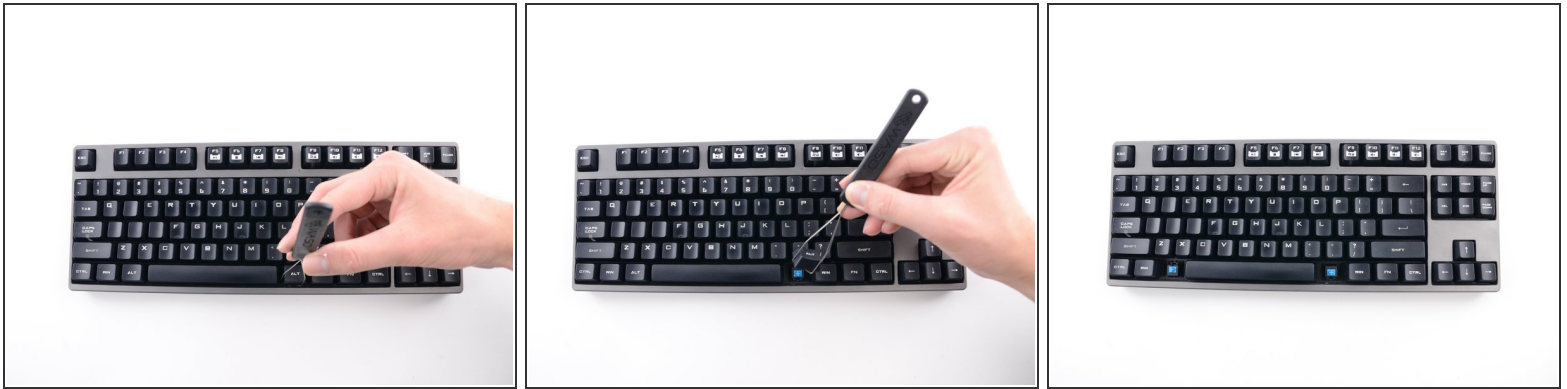
- [Keycap Removal Tool](#) (1)



PARTS:

- [Large keycap](#) (1)

Step 1 — Remove surrounding keycaps



- Remove keycaps surrounding the keycap you'd like to remove by following the [remove small keycaps guide](#).

Step 2



- Pull the large keycap upward with your fingers until the cap separates from the plastic rings underneath the cap. If the metal bar beneath the cap comes loose during removal, snap it back in place.

Step 3



- Install the plastic rings on the new keycap. The overhang needs to be ‘facing forward’ so that when the keycap is placed back on the board, the overhang is furthest away from you. When attaching the new key to the board, the ends of the metal bar on the board will go through these rings.

To reassemble your device, follow these instructions in reverse order.