



CM Storm QuickFire Rapid Switch Replacement

Replacing the switches of a mechanical keyboard can enhance certain characteristics of a users typing. This makes knowing how to replace them an important skill to have. The following guide will show you just how to do that.

Written By: Andrew



INTRODUCTION

This guide will go over how to replace the switches on a CM Quickfire Rapid keyboard.



TOOLS:

- [Keycap Removal Tool](#) (1)
- [iFixit Opening Tools](#) (1)
- [Soldering Iron](#) (1)
- [Phillips #0 Screwdriver](#) (1)
- [Desoldering Braid](#) (1)



PARTS:

- [Cherry MX Switch](#) (1)

Step 1 — Switch



- Remove the keycap of the key whose switch you'd like to replace by following the [small keycap replacement guide](#) or [large keycap replacement guide](#).

Step 2 — Remove screw on back of keyboard (labeled do not remove)



- Using a Philips #0 screwdriver, remove the .5cm screw from the back of the keyboard.



This will void your warranty!



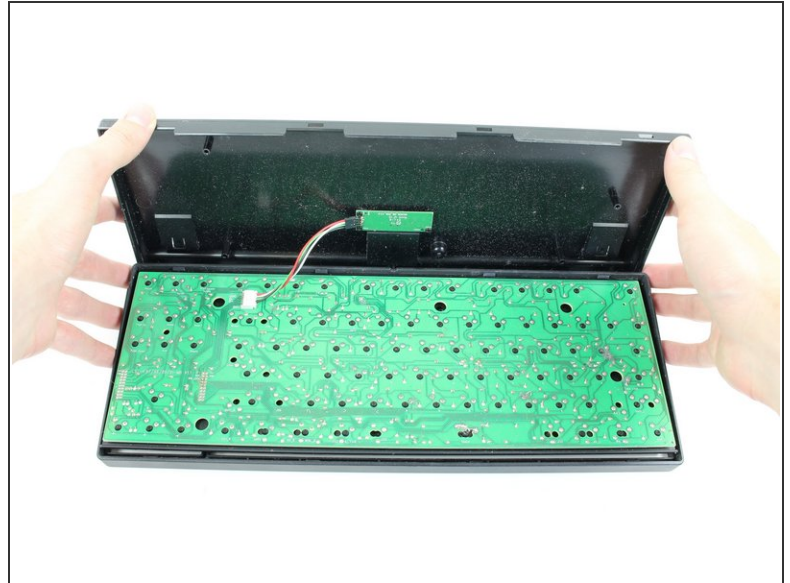
When inserting the screw after replacing the switch, make sure to not screw in too tight. This may cause erratic behavior with the keyboard.

Step 3 — Separating Back Panel from Front Panel



- Wedge a plastic opening tool between the rear plate and rim of the keyboard and slide it through the circled areas to separate the plastic hooks that mount the rim to the rear plate.

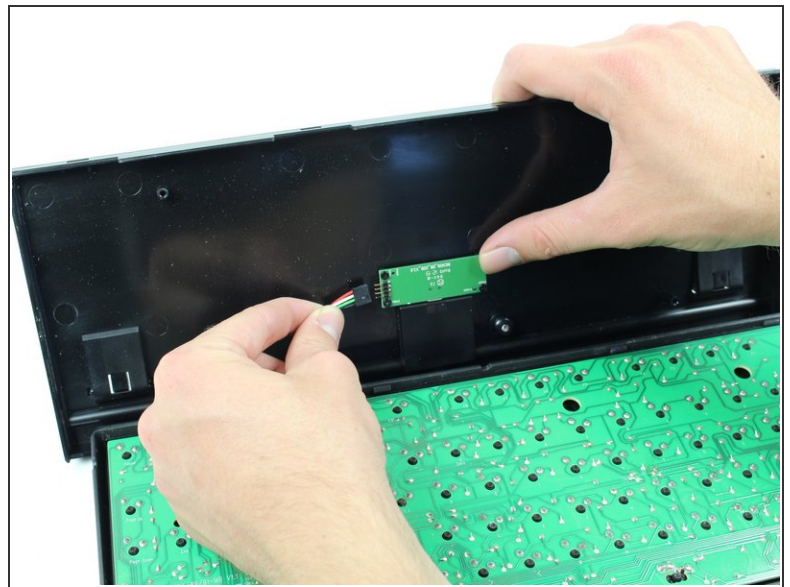
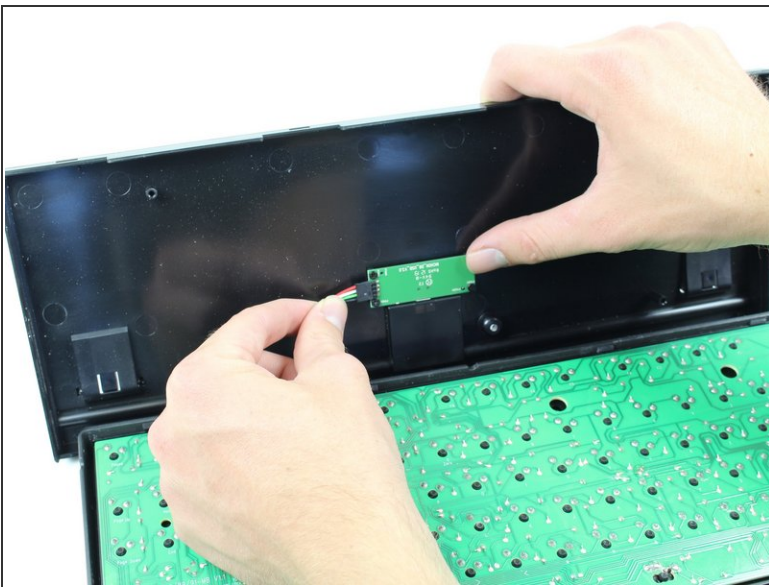
Step 4 — Opening Back Panel



- Firmly grasp the bottom panel of the keyboard and carefully detach it from the rest of the board.

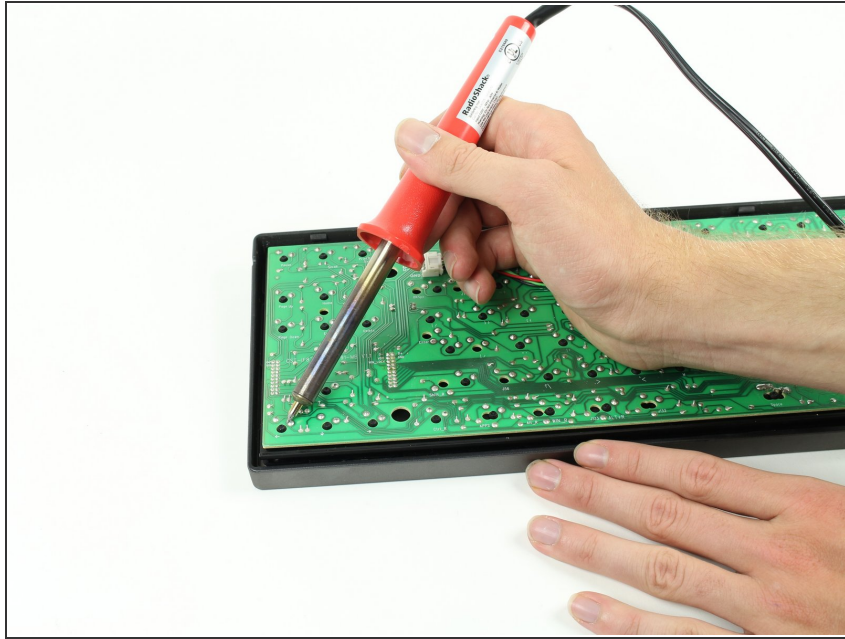
⚠ Do not put strain on the ribbon cable when lifting the bottom panel.

Step 5 — Detaching SIL Connector



- Detach the 4-pin cable from the bottom panel of the keyboard.

Step 6 — Desolder Switch Solder Joints



- Desolder the joints holding the switch to the board.
- Remove the switch and solder the new switch in place.

To reassemble your device, follow these instructions in reverse order.