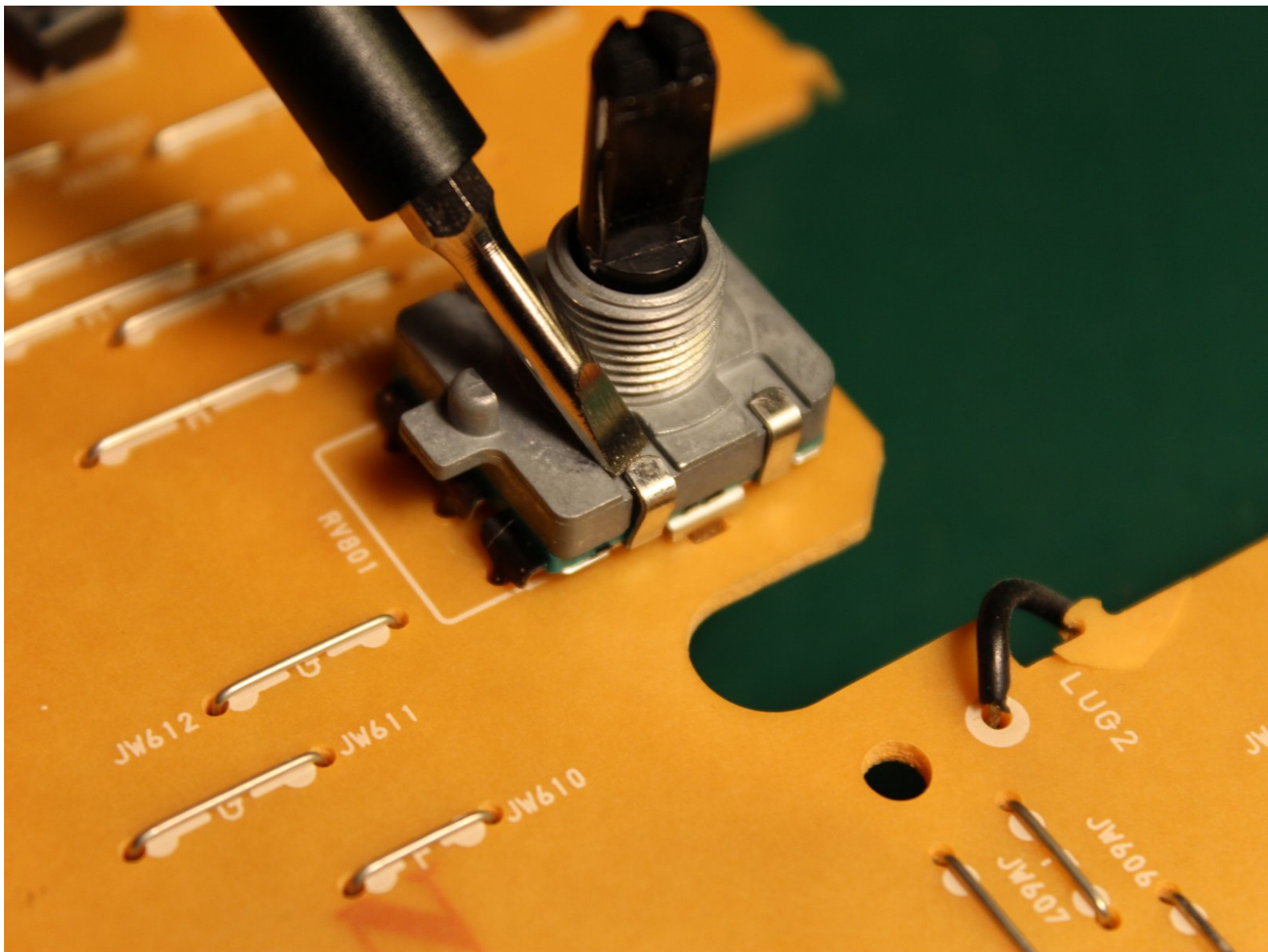




# CMT-CP1 Rotary encoder cleaning/replacing

Here I fix the rotary encoder volume control. This is a common problem they get dirty and become erratic.

Written By: Jacco Hogen Esch



---

## INTRODUCTION

Here I fix the rotary encoder volume control. This is a common problem they get dirty and become erratic.

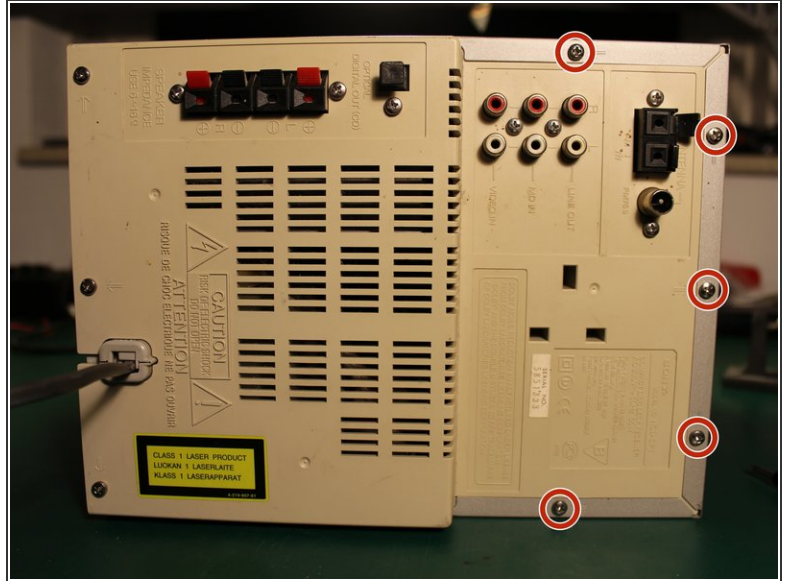
---



### TOOLS:

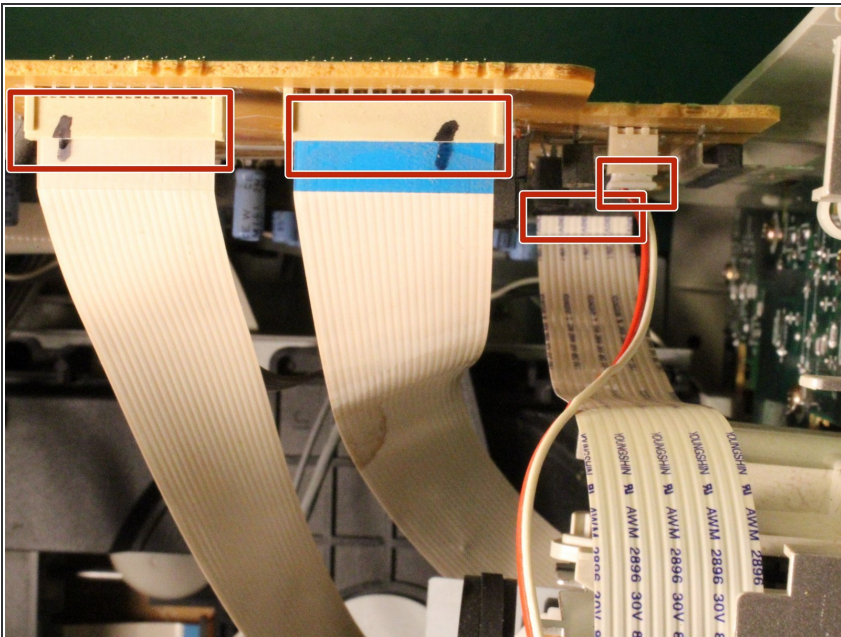
- [Phillips #1 Screwdriver](#) (1)
  - [Flathead Screwdriver](#) (1)
-

## Step 1 — remove cover



- Remove the screws

## Step 2 — remove flex cables



- Remove the flex cables with easy access

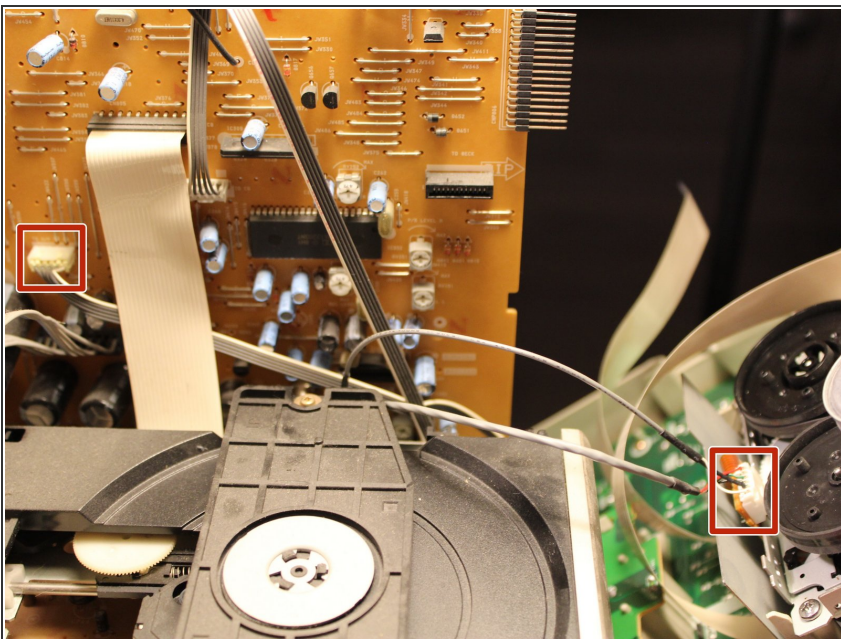


### Step 3 — remove screws



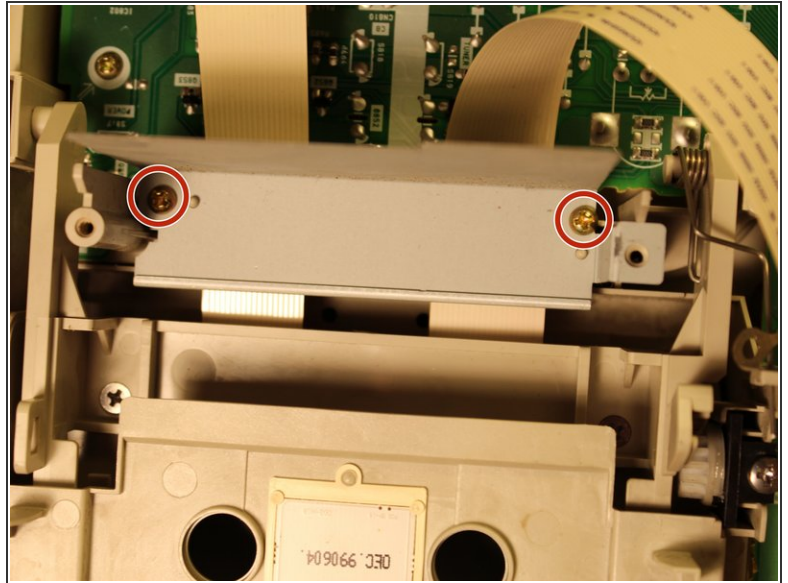
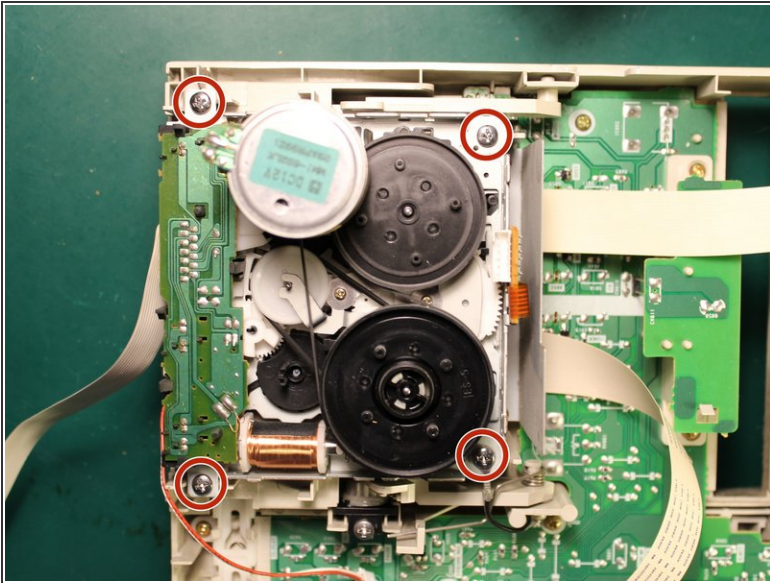
- Remove the screws on both sides and on the bottom

### Step 4 — remove more cables



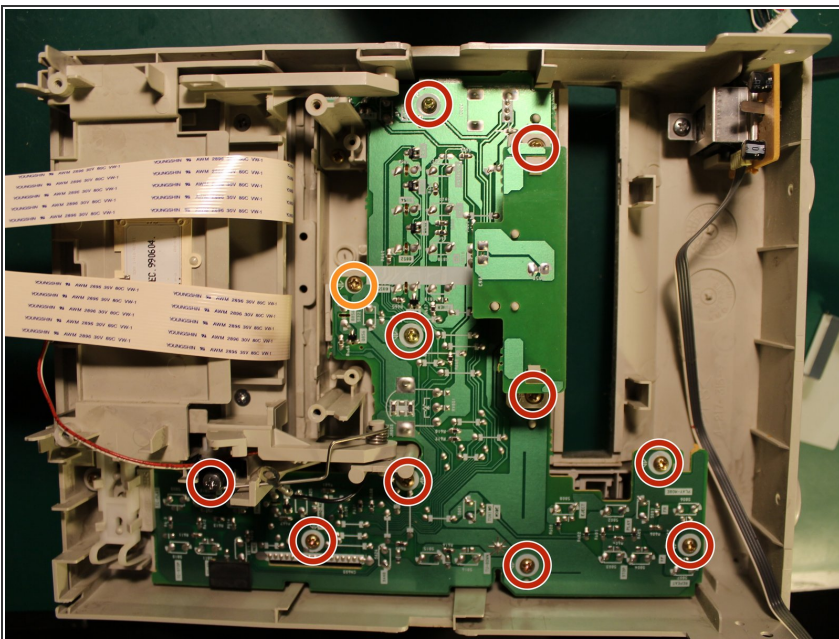
- Remove the front and the rest of the cables

## Step 5 — remove cassette deck



- Remove the cassette deck (this is to access the screw beneath it)

## Step 6 — remove pcb



- Remove the screws (you have to remove the casetdeck to access the orange screw)

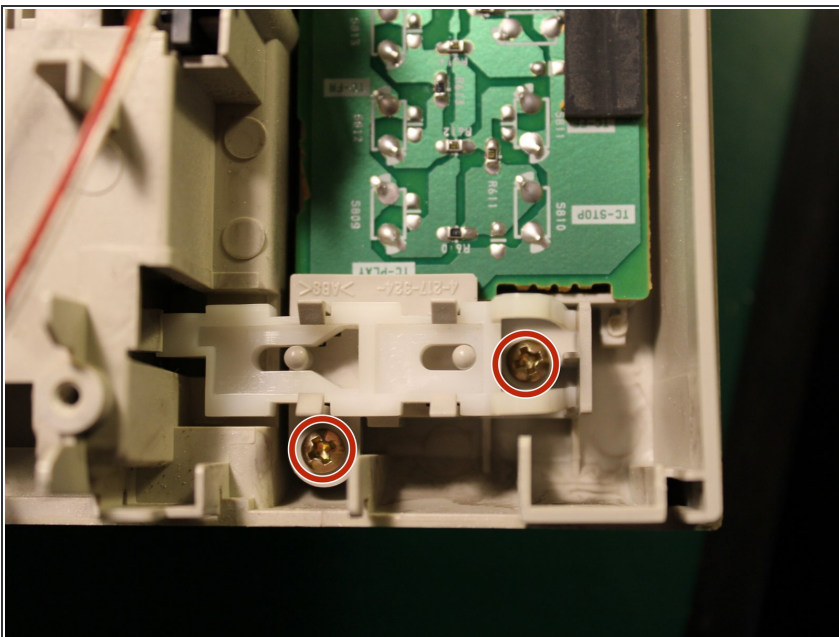


## Step 7 — remove knob



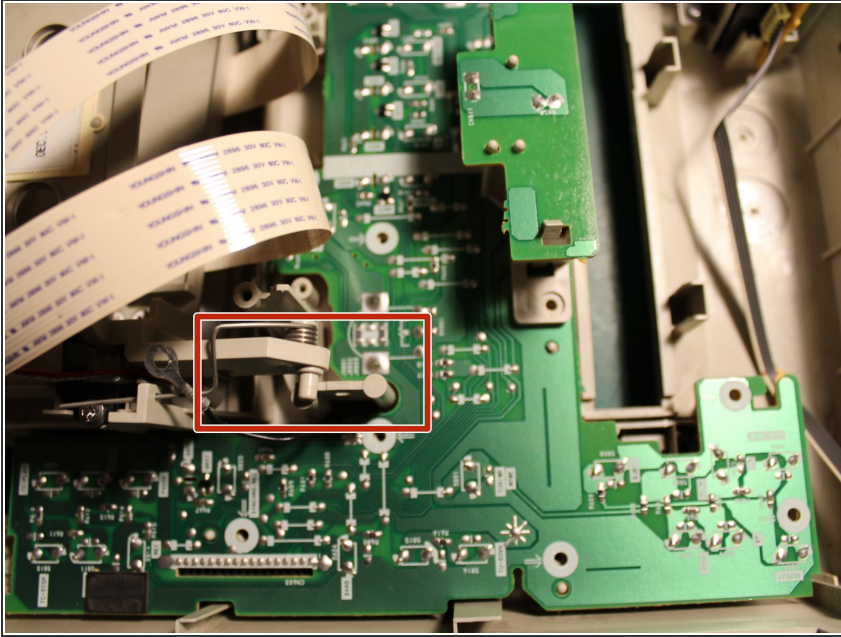
- Remove the volume knob and the screw behind it

## Step 8 — remove more screws



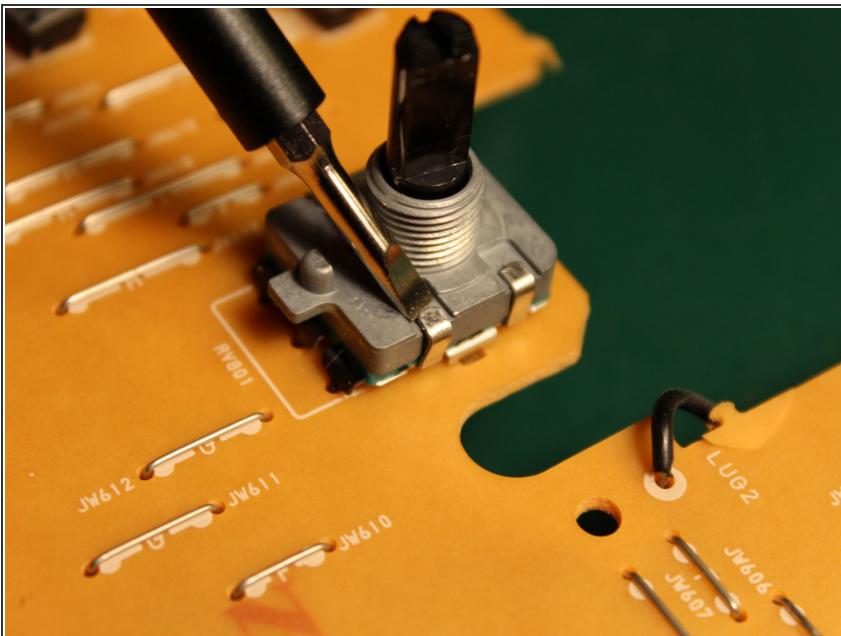
- Remove the screws

## Step 9 — lift up one side



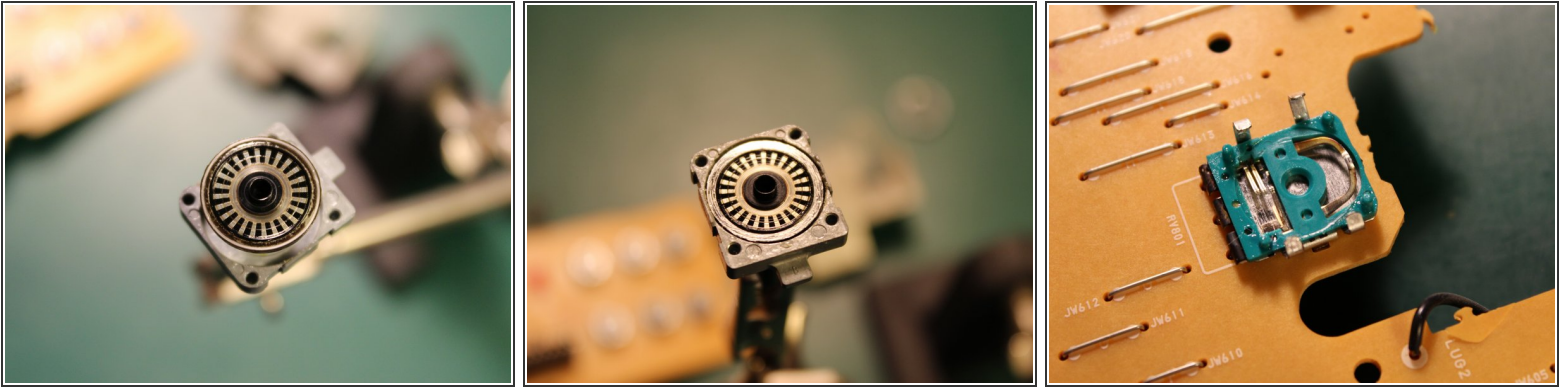
- carefully lift up one side of the cassette deck and remove the pcb

## Step 10 — open the rotary encoder



- Remove the taps to the side carefully

## Step 11 — clean the rotary encoder



- clean up your rotary encoder with a screwdriver, also the inside!

To reassemble your device, follow these instructions in reverse order.