



CPU Replacement

Replacing a malfunctioning central processing unit on a Sony Vaio laptop.

Written By: Eric Martinez



INTRODUCTION

The Hard Drive is the data storage device. If you wish to keep all your current setting or data make sure to have them backed up on an external storage device or once the hard drive is removed have it cloned onto the new one.

TOOLS:

- [Phillips #1 Screwdriver](#) (1)
 - [Spudger](#) (1)
 - [Anti-Static Wrist Strap](#) (1)
-

Step 1 — CPU



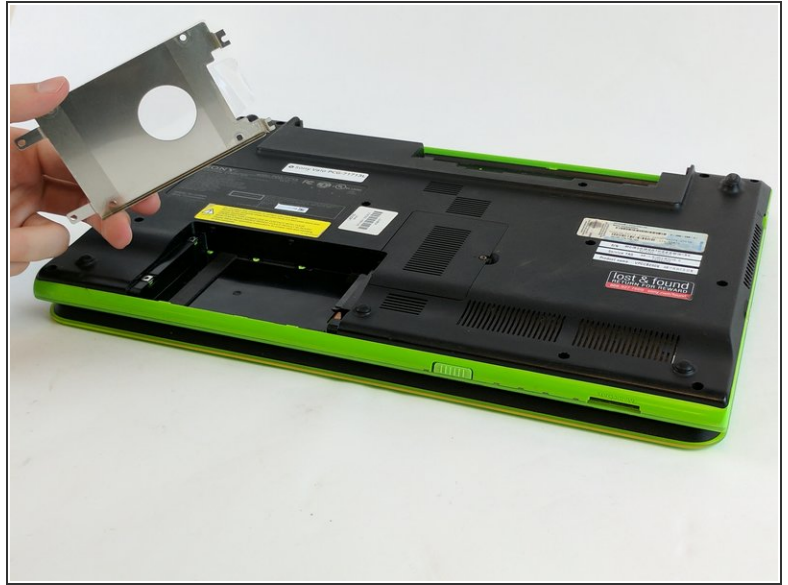
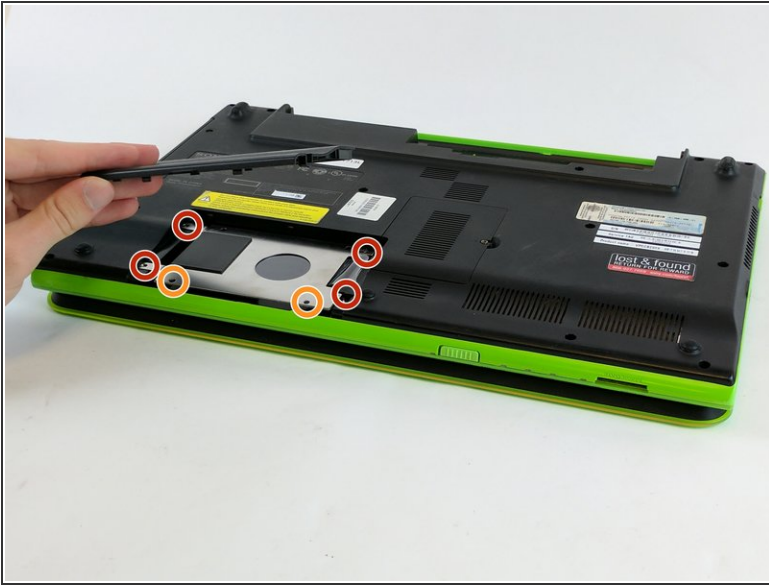
- First make sure the laptop is off and closed.

Step 2



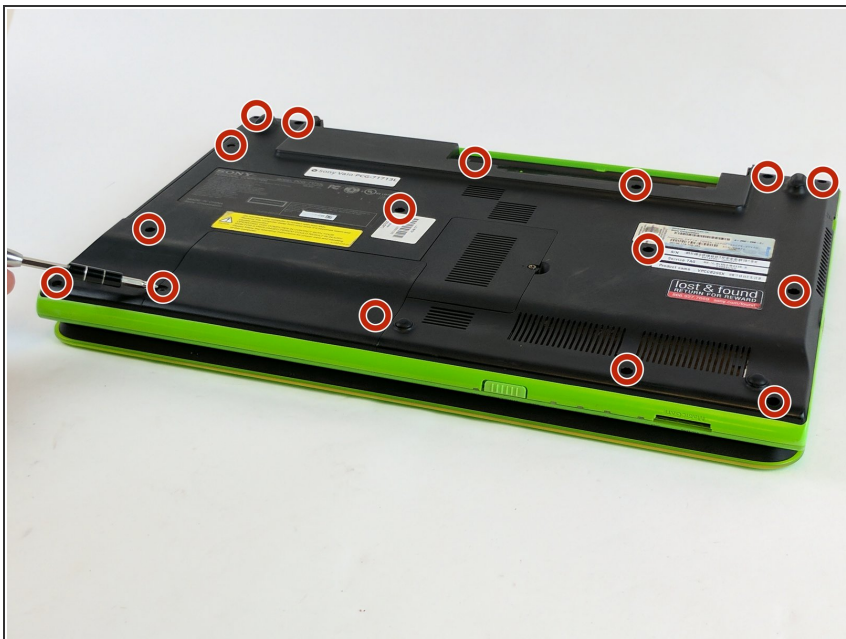
- Unlock the battery and push the release lever to remove the battery from the laptop.

Step 3



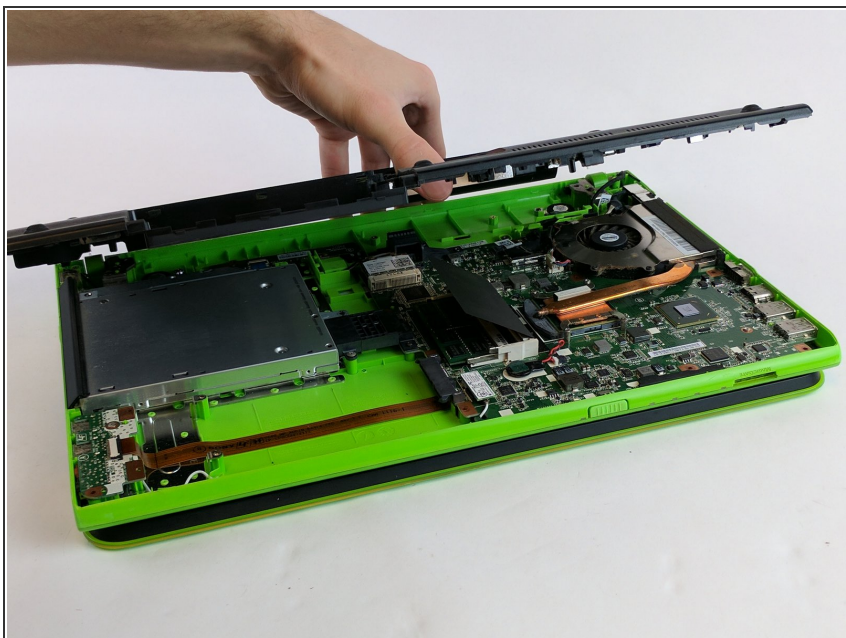
- Unscrew the four screws to remove the hard drive cover.
 - Remove these two screws to loosen the hard drive.
 - Gently slide the hard drive out.
- ⓘ The hard drive is missing from this device. (Only cover is shown)

Step 4



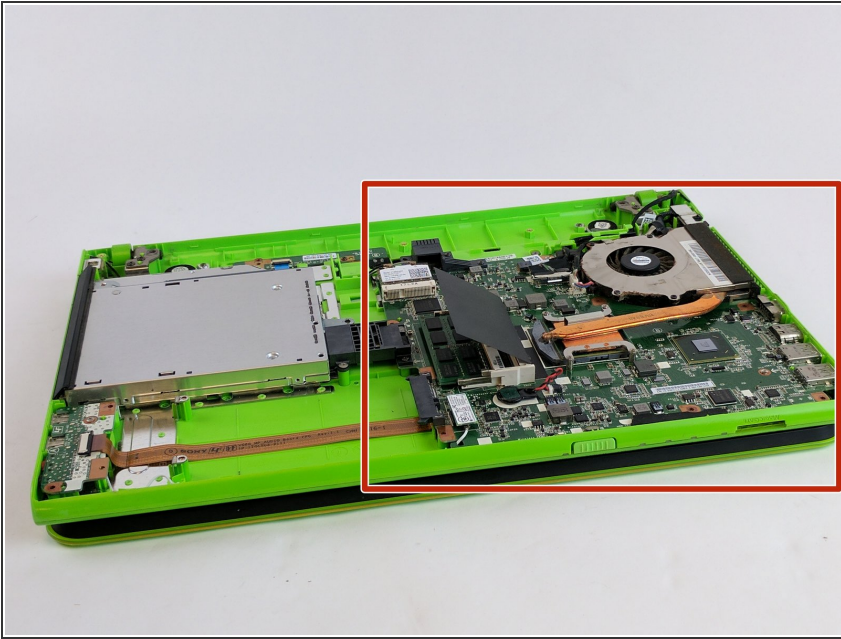
- Remove all the screws that hold the plastic bottom on. There are some more screws that can't be seen in the photo.

Step 5



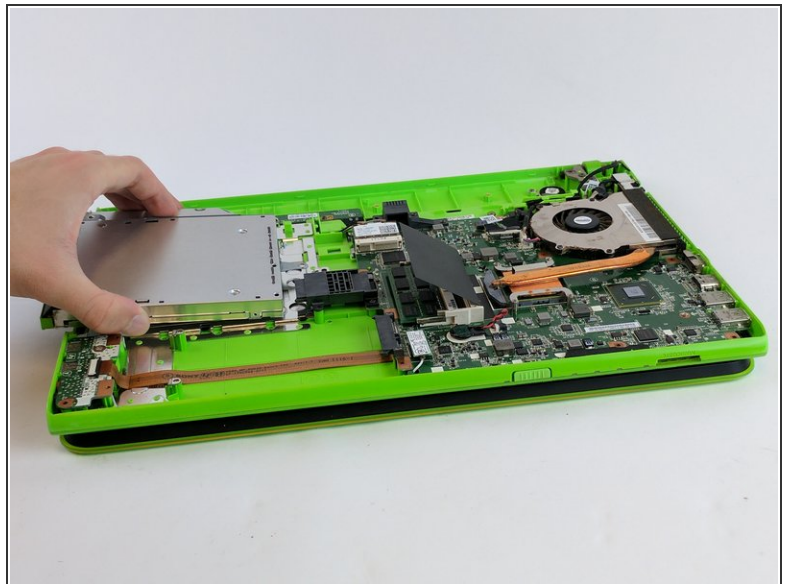
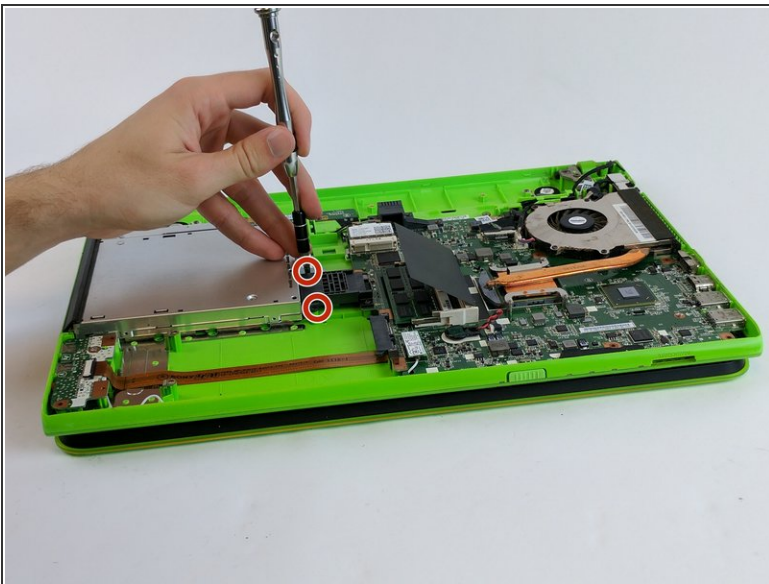
- Gently pry up the plastic bottom and if it feels like it is resisting check the surrounding areas for more screws.

Step 6



- Now that the backing plate is off make sure to be careful of the Motherboard and its components from being damaged. From here on out it is recommended that you wear an anti static bracelet or at the very least touching something metal to remove any static electricity that you may have built up.

Step 7



- There will be a couple more screw holding in the CD tray and once you remove them the CD tray will simply slide out.

To reassemble your device, follow these instructions in reverse order.

This document was generated on 2019-09-23 08:00:35 PM (MST).

