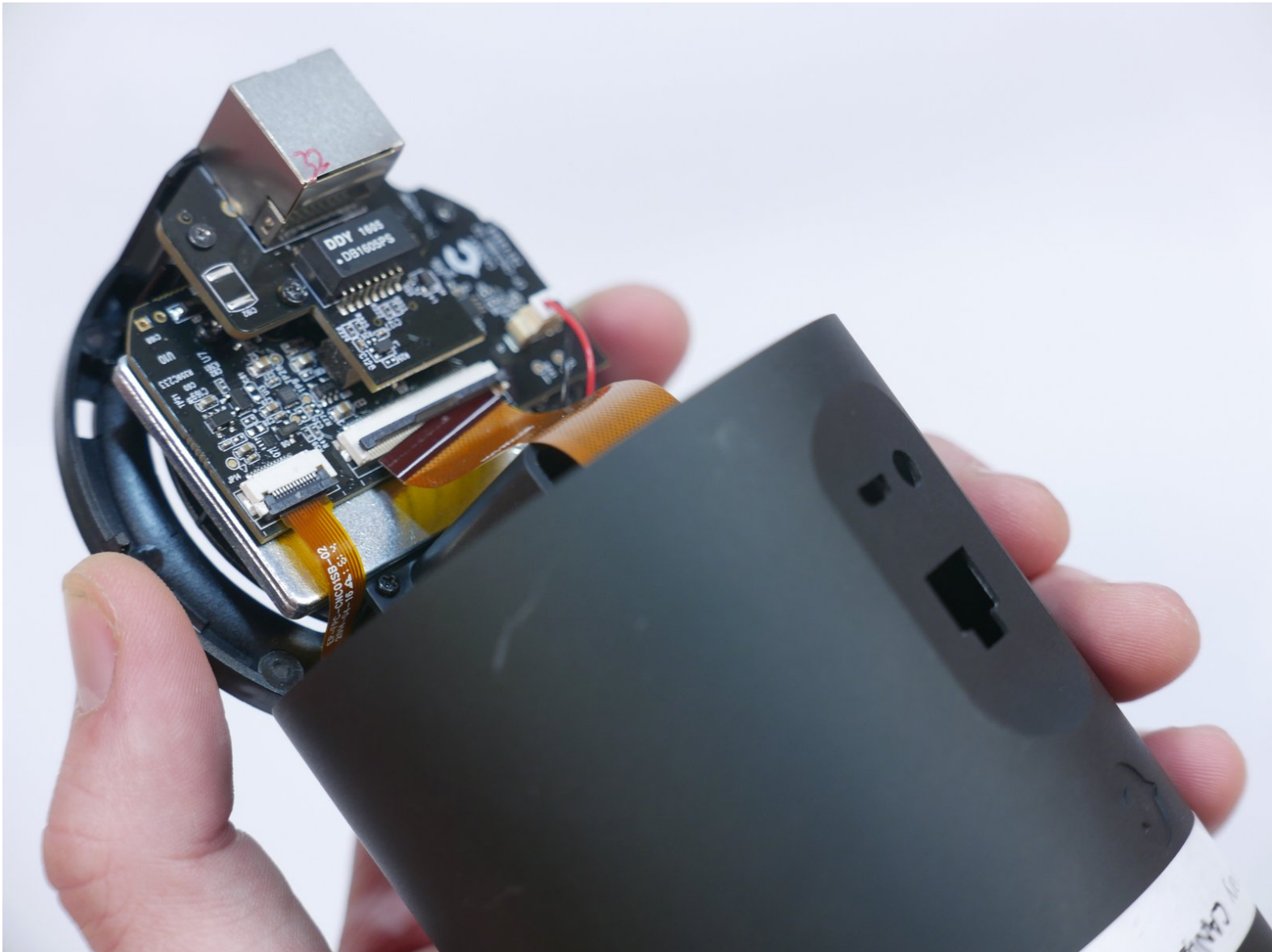




Canary CAN100USBK Bottom Casing Replacement

Prerequisite Only

Written By: Tommy Nguyen



INTRODUCTION

This guide will show you how to remove the bottom casing.

Before you can perform any other replacement guide, you must remove the bottom casing. It gives access to the Ethernet PCB Board, Audio and USB PCB Board and to the nooks where you can pry the front panel off.

As you remove the bottom casing, work slowly to avoid damaging the ribbon cable that is attached to the Audio and USB PCB Board.

A spudger is needed to pry the bottom casing off.

TOOLS:

- [Phillips #0 Screwdriver](#) (1)
 - [Spudger](#) (1)
-

Step 1 — Bottom Casing



- Grip the rubber ring with your fingers and pull up.
- Rotate the Canary as you pull out one tab at a time.

Step 2



- Use your Phillips #0 screwdriver to remove the four 6mm screws.

Step 3



- Use the flat end of the spudger to carefully pry off the bottom casing.
- Alternate pushing up on the left and right sides until the clips holding the case in are visible.

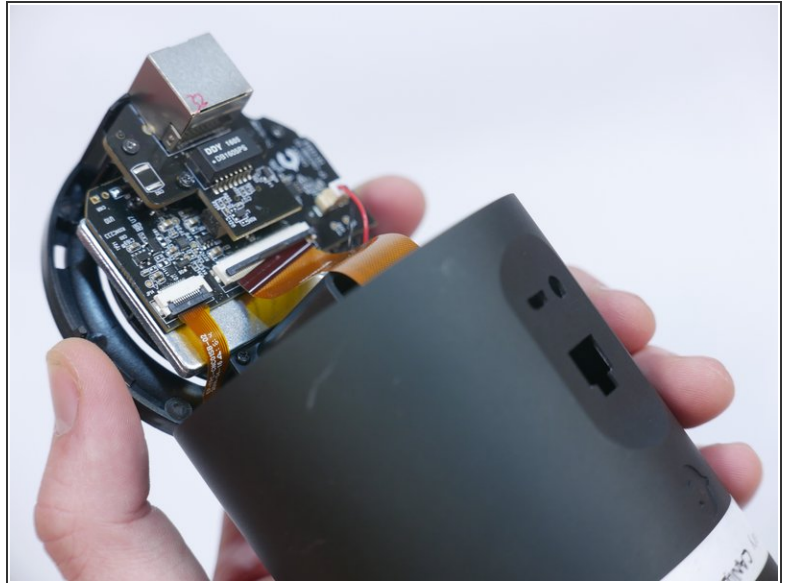
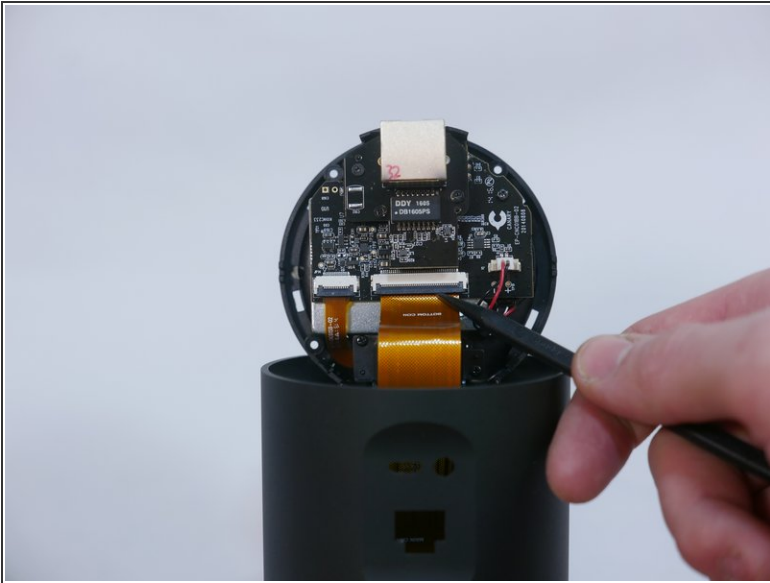
Step 4



 Do not yank the bottom off or you may damage the ribbon cable or the ZIF connector.

- Carefully remove the bottom casing by gripping it on both sides and pulling straight up.

Step 5



- Use the pointed end of the spudger to flip up the small retaining flap on the ZIF ([zero insertion force](#)) connector.
- Pull the ribbon cable out towards the device.

To reassemble your device, follow these instructions in reverse order.