



# Canary CAN100USBK Front Panel Replacement

Prerequisite Only

Written By: Tommy Nguyen



---

## INTRODUCTION

This guide will show you how to replace the front panel.

Once the bottom casing has been removed, you can remove the front panel. Removing the front panel gives access to the screws required to remove the motherboard and leverage to pry the top casing off with a spudger.

A spudger is needed for this task.



### TOOLS:

- [Phillips #0 Screwdriver](#) (1)
  - [Spudger](#) (1)
-

## Step 1 — Bottom Casing



- Grip the rubber ring with your fingers and pull up.
- Rotate the Canary as you pull out one tab at a time.

## Step 2



- Use your Phillips #0 screwdriver to remove the four 6mm screws.


### Step 3



- Use the flat end of the spudger to carefully pry off the bottom casing.
- Alternate pushing up on the left and right sides until the clips holding the case in are visible.

### Step 4

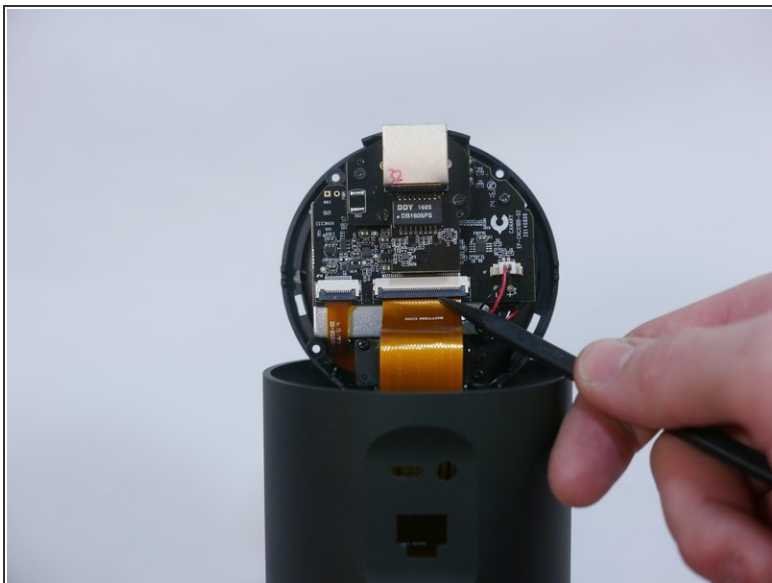


 Do not yank the bottom off or you may damage the ribbon cable or the ZIF connector.

- Carefully remove the bottom casing by gripping it on both sides and pulling straight up.

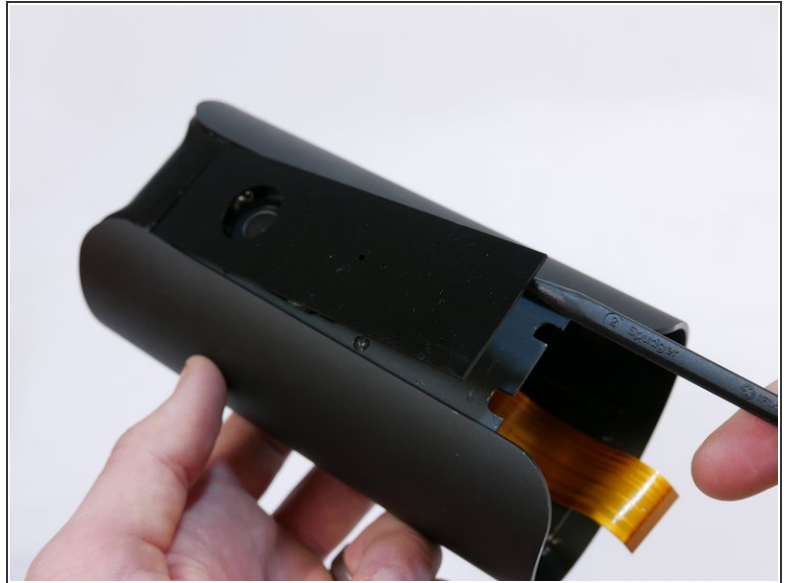


## Step 5



- Use the pointed end of the spudger to flip up the small retaining flap on the ZIF ( [zero insertion force](#)) connector.
- Pull the ribbon cable out towards the device.

## Step 6 — Front Panel



- There are two empty nooks underneath the bottom of the panel close to each side of the case.
- Place the pointed edge of the spudger in one of the nooks under the panel and pry upwards.

## Step 7



- ⓘ Adhesive will have to be reapplied after removing the panel.
- Pull the panel away from the device.

To reassemble your device, follow these instructions in reverse order.