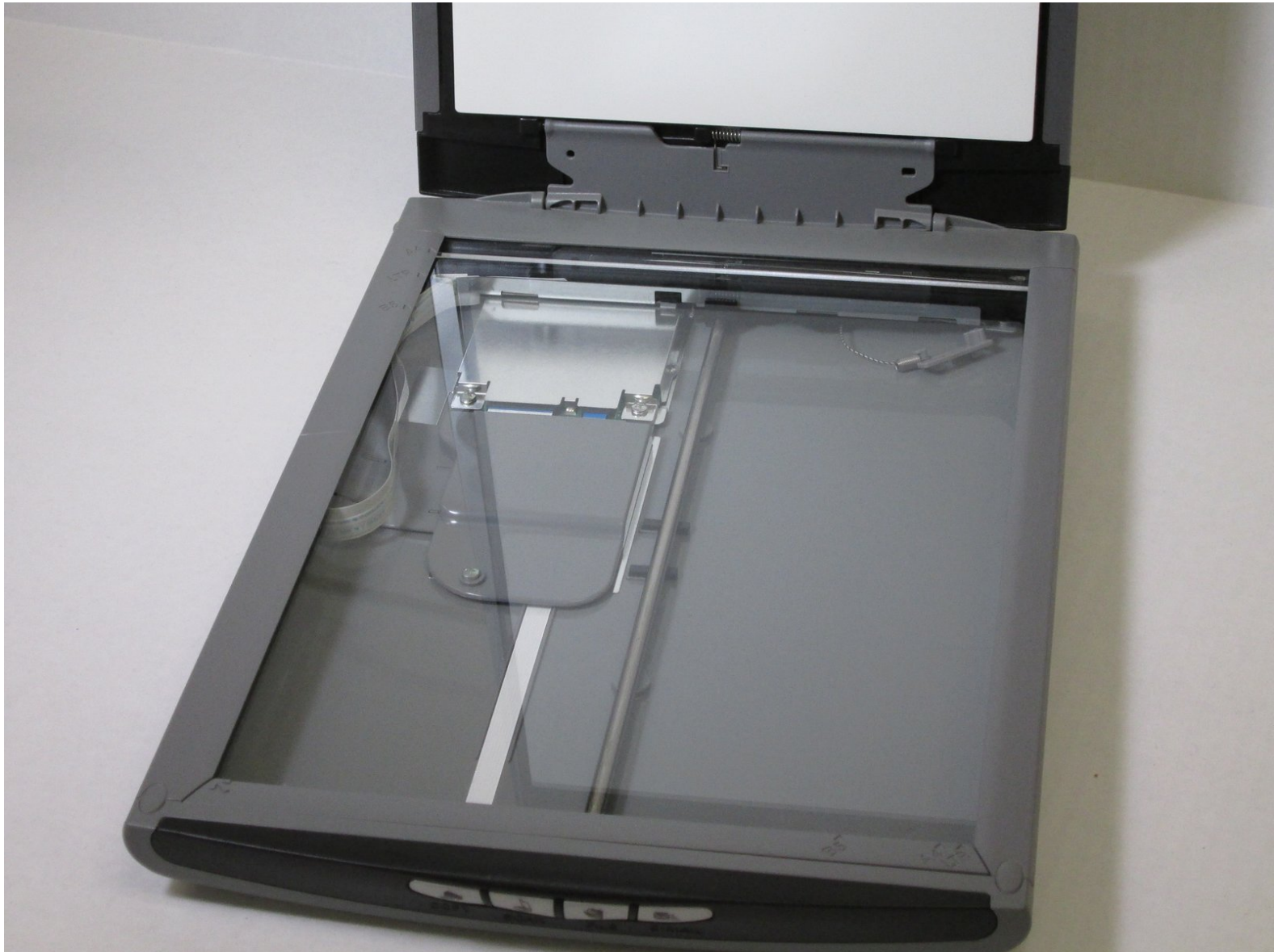




CanoScan LiDE 35 Scanner Glass Replacement

This guide will help you replace your scanner's glass.

Written By: Shannon



INTRODUCTION

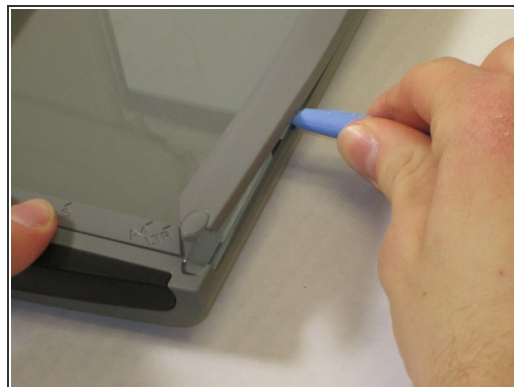
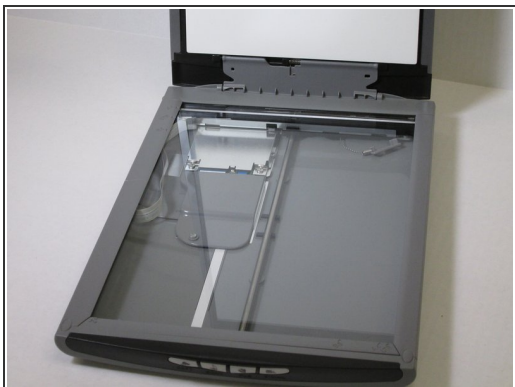
This guide will show you how to remove the plastic frame from the case and how to remove the scanner glass to be replaced. A little force will be necessary but with care, this guide will be fairly easy.



TOOLS:

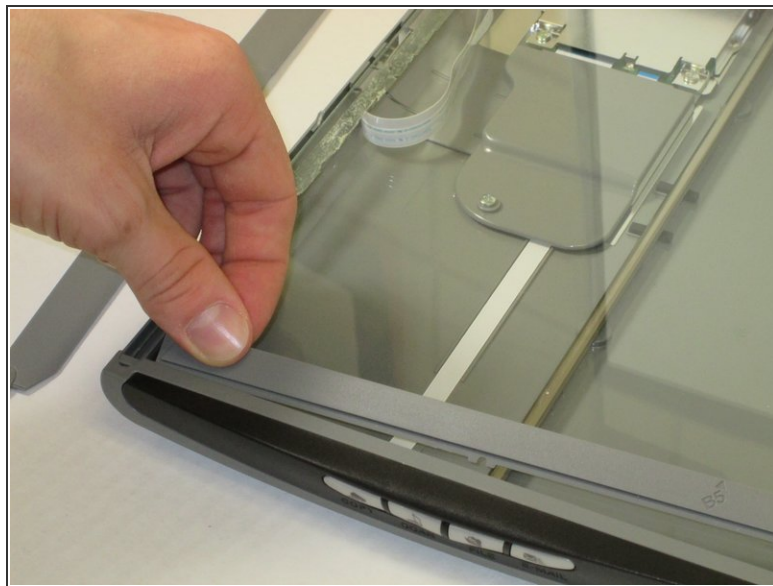
- [Spudger](#) (1)
-

Step 1 — Scanner Glass



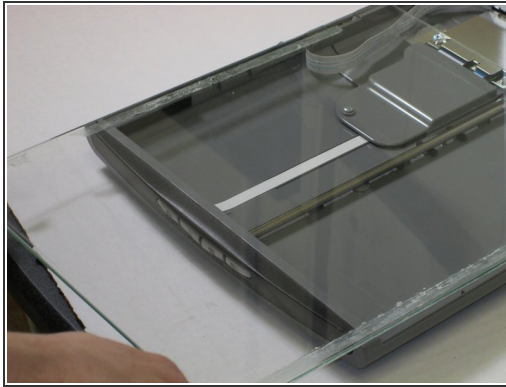
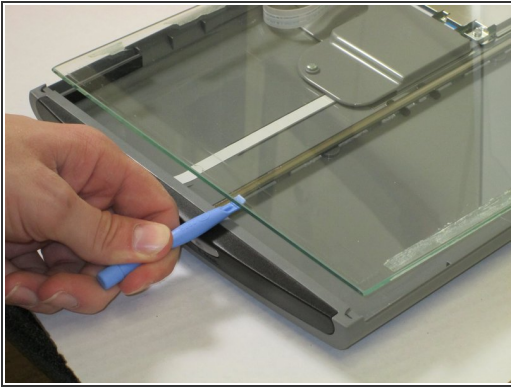
- Slide the plastic opening tool under the plastic to unpeel it from the glass.
- Gently pry the plastic framing from the glass.
- Repeat on the other side.

Step 2



- Remove the front plastic frame.

Step 3



- Wedge the plastic opening tool under the glass and pull up.
- Slide the glass forward.
- Remove the glass.

To reassemble your device, follow these instructions in reverse order.