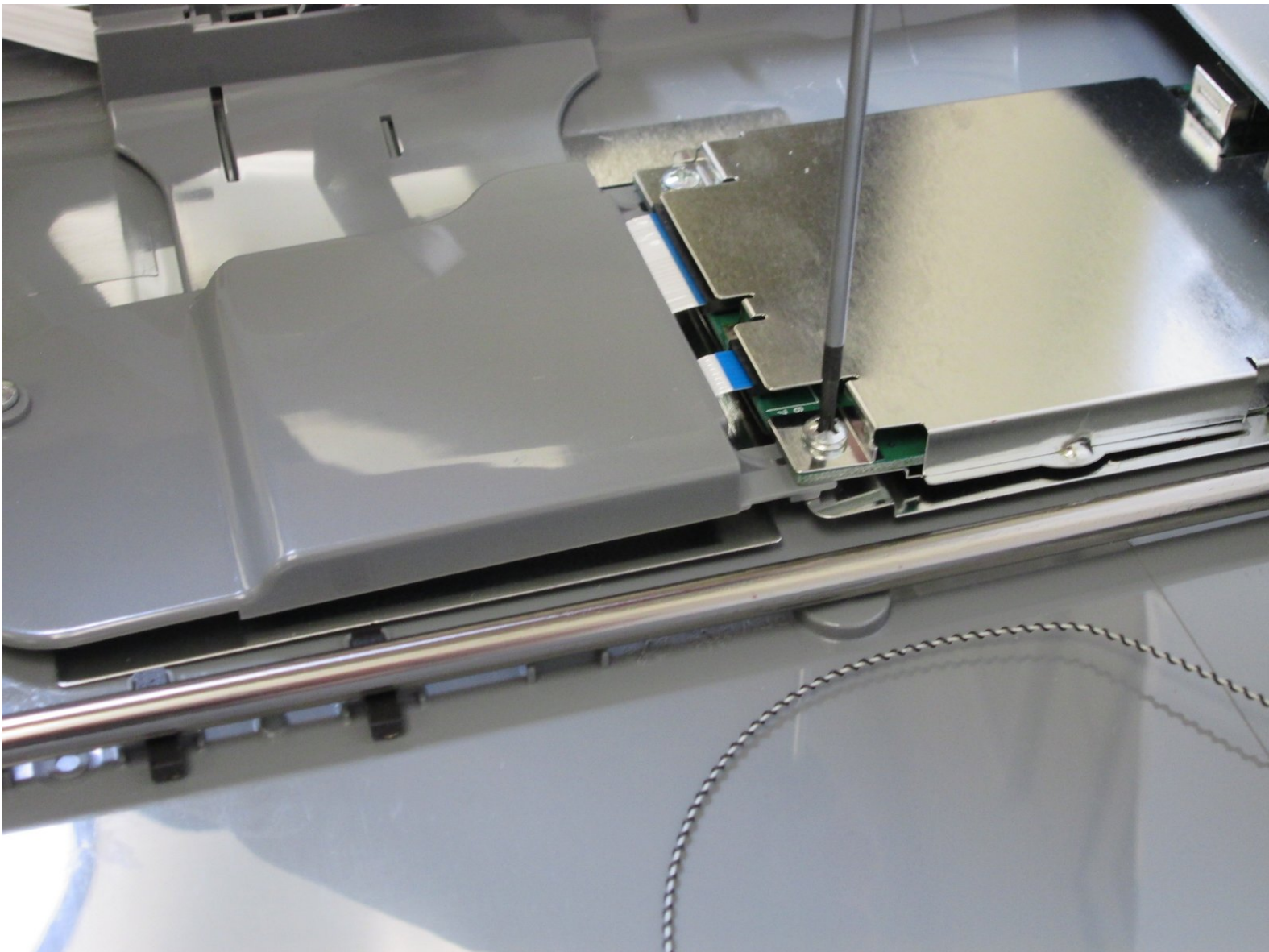




CanoScan LiDE 35 Square Port Replacement

This guide will help you remove the square port.

Written By: Shannon



INTRODUCTION

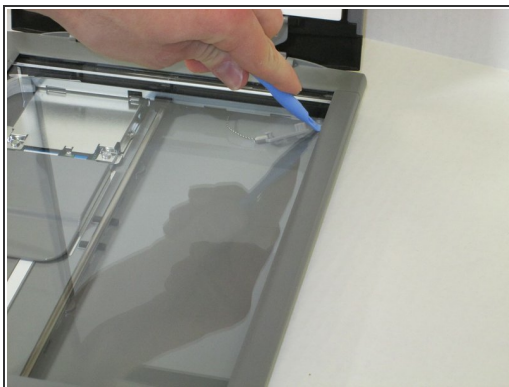
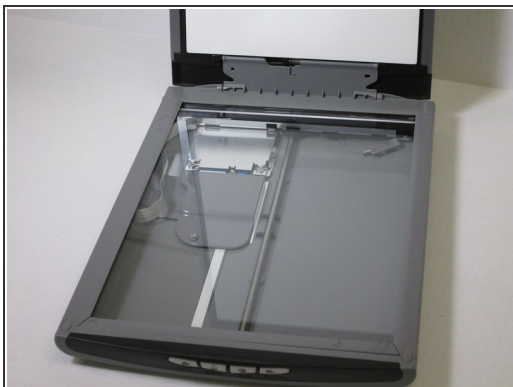
This guide will show you how to replace your square port by unscrewing the plastic casing that holds it, unpeeling the ribbon cable that attaches it to the case, and unplugging one end of the ribbon cable that will free the entire port.



TOOLS:

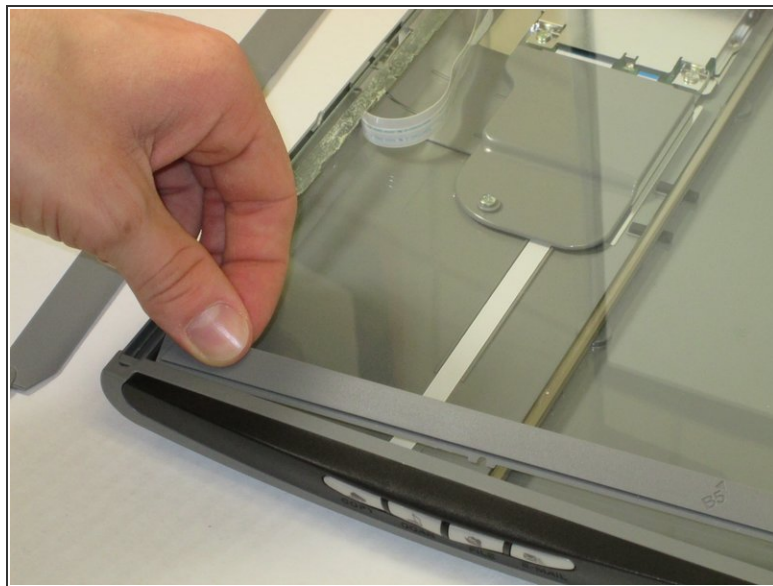
- [Phillips #0 Screwdriver](#) (1)
-

Step 1 — Scanner Glass



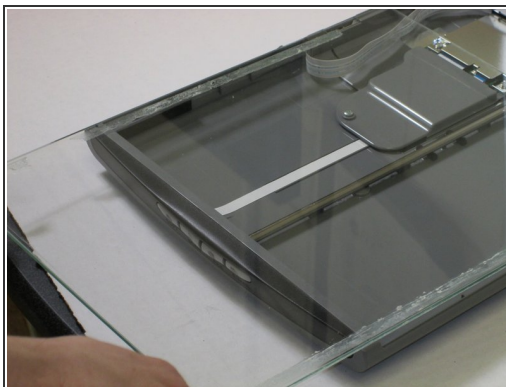
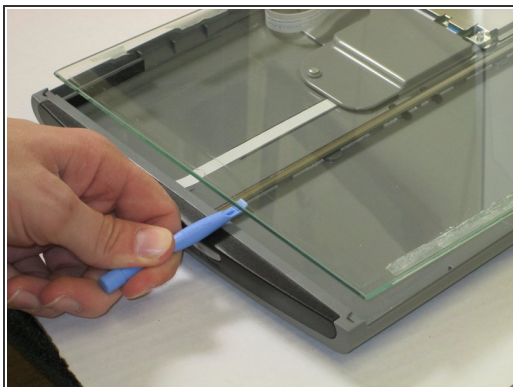
- Slide the plastic opening tool under the plastic to unpeel it from the glass.
- Gently pry the plastic framing from the glass.
- Repeat on the other side.

Step 2



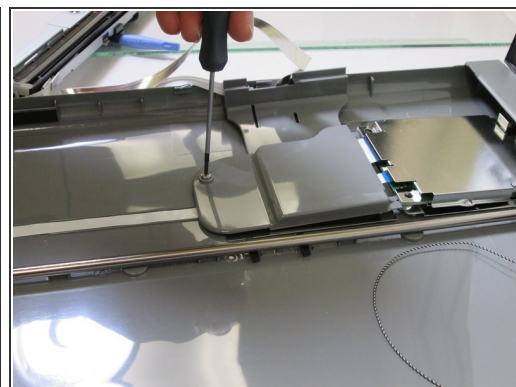
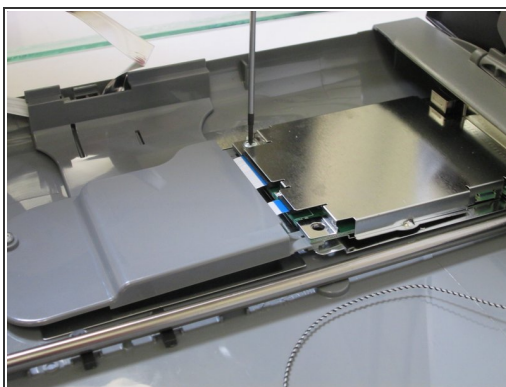
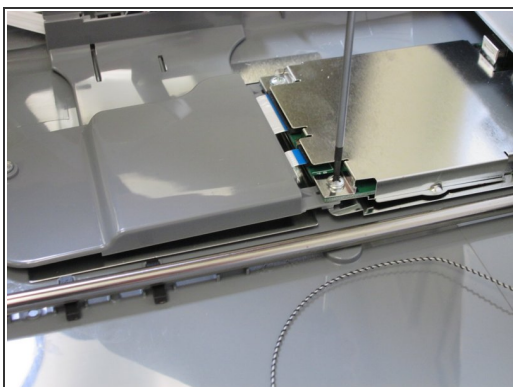
- Remove the front plastic frame.

Step 3



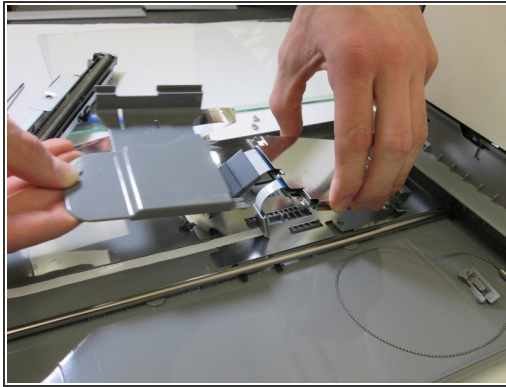
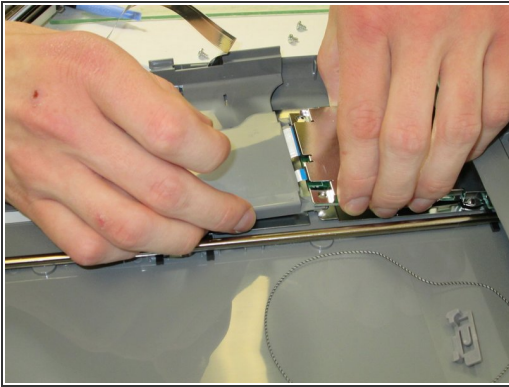
- Wedge the plastic opening tool under the glass and pull up.
- Slide the glass forward.
- Remove the glass.

Step 4 — Square Port



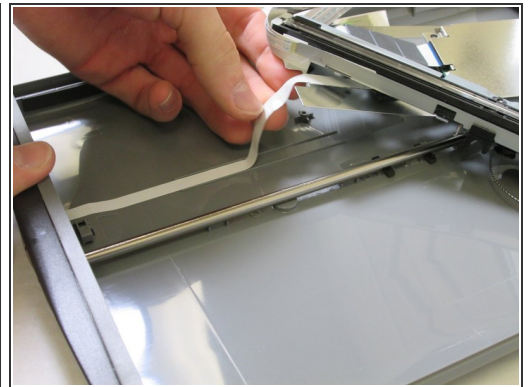
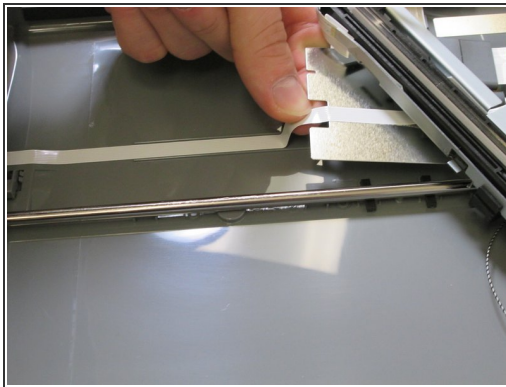
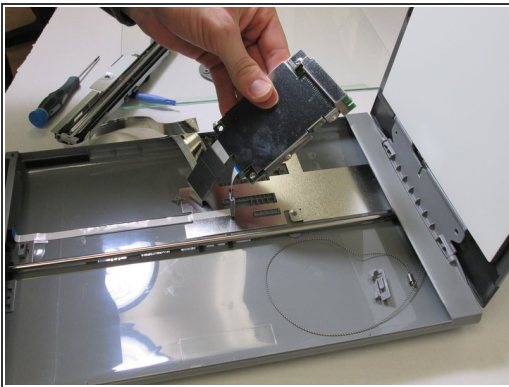
- Unscrew the three screws that attach the grey plastic shell to the case.

Step 5



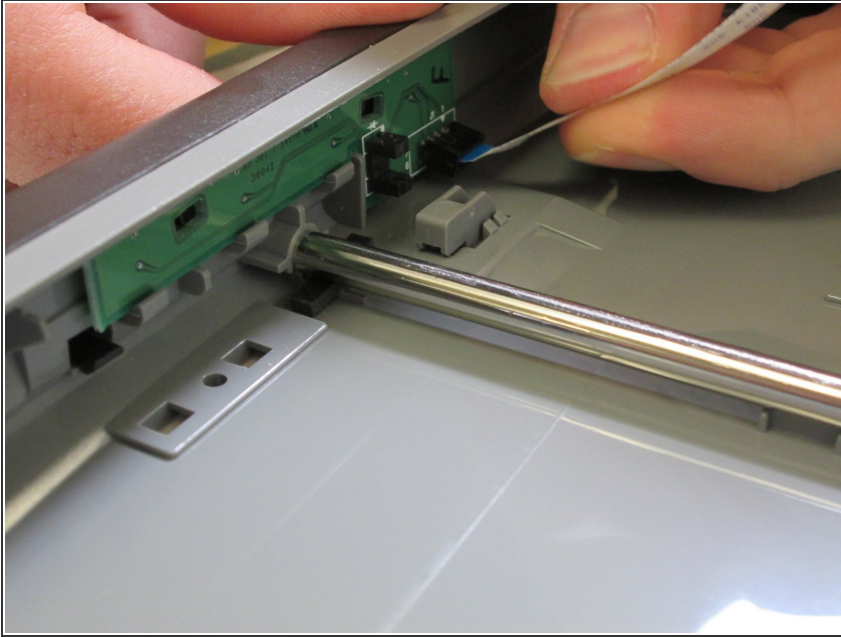
- Remove the shell from the inner square port.

Step 6



- Gently unpeel the ribbon cable from the bottom of the case.

Step 7



- Unplug the ribbon cable.
- Remove the square port.

To reassemble your device, follow these instructions in reverse order.