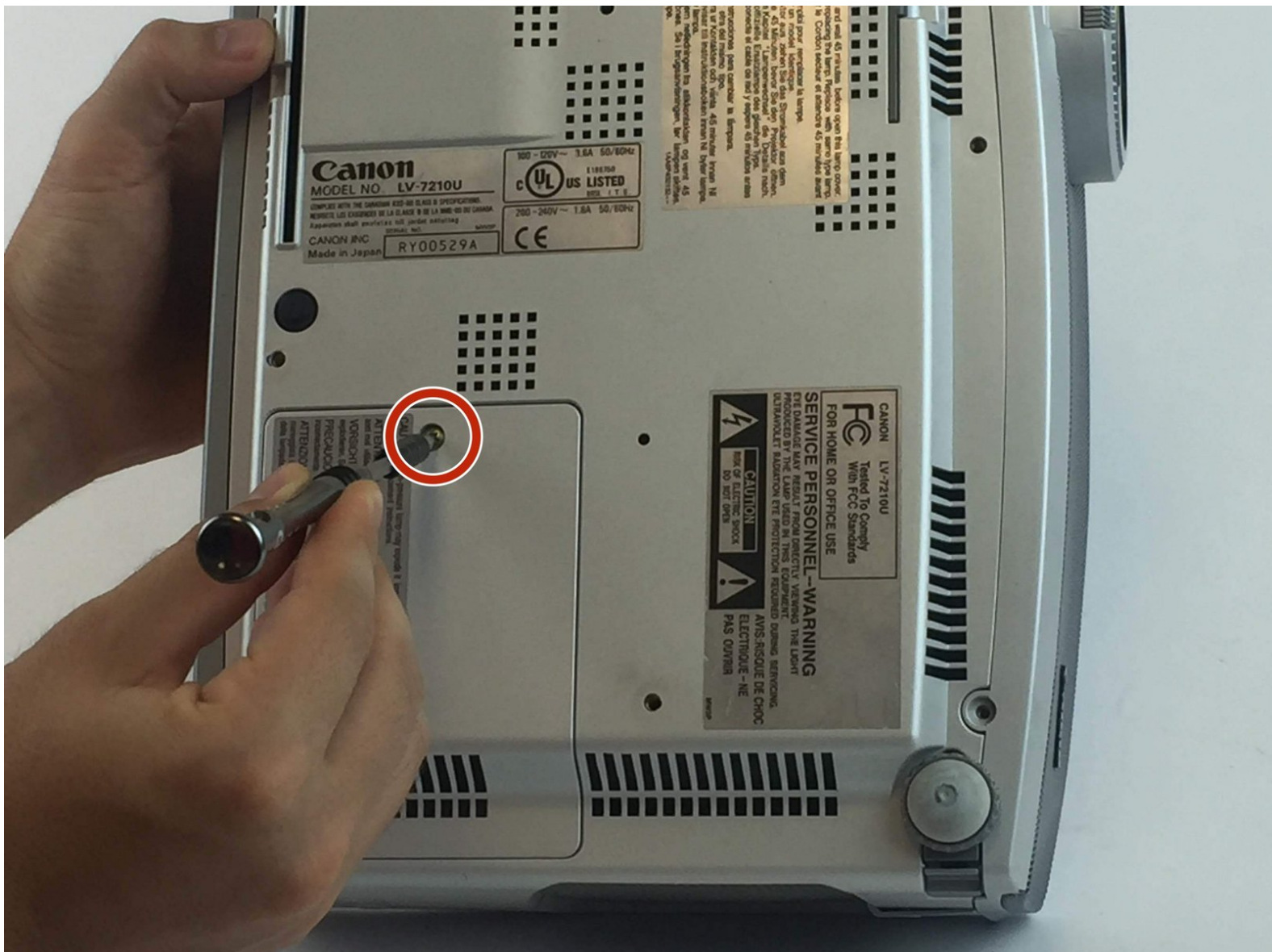




Canon 7210 Bulb Replacement

Replaces the main bulb, which can be a common issue in this kind of projector.

Written By: William Christian



INTRODUCTION

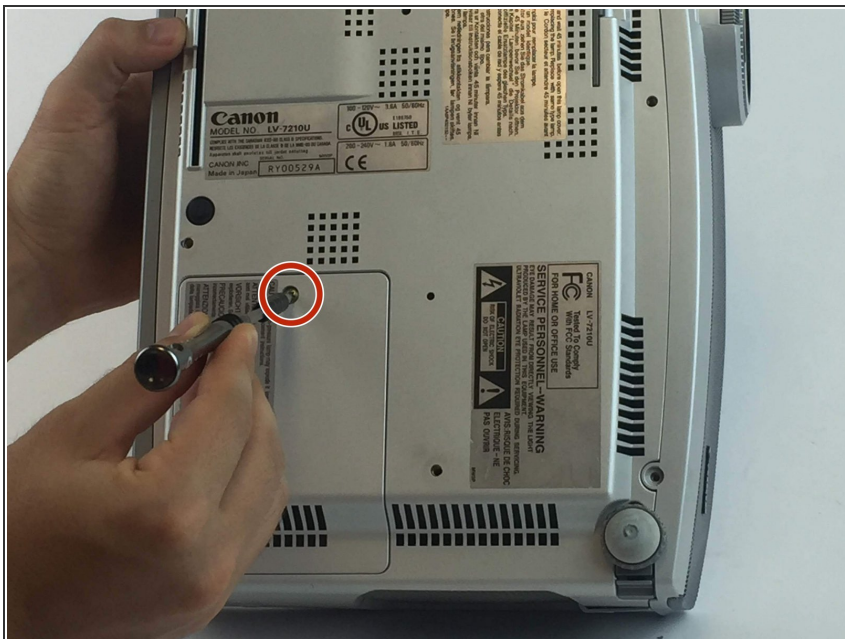
This guide demonstrates how to replace the bulb. This part will commonly burn out and need to be replaced, so knowing the steps to this simple repair will be very useful for a consumer.



TOOLS:

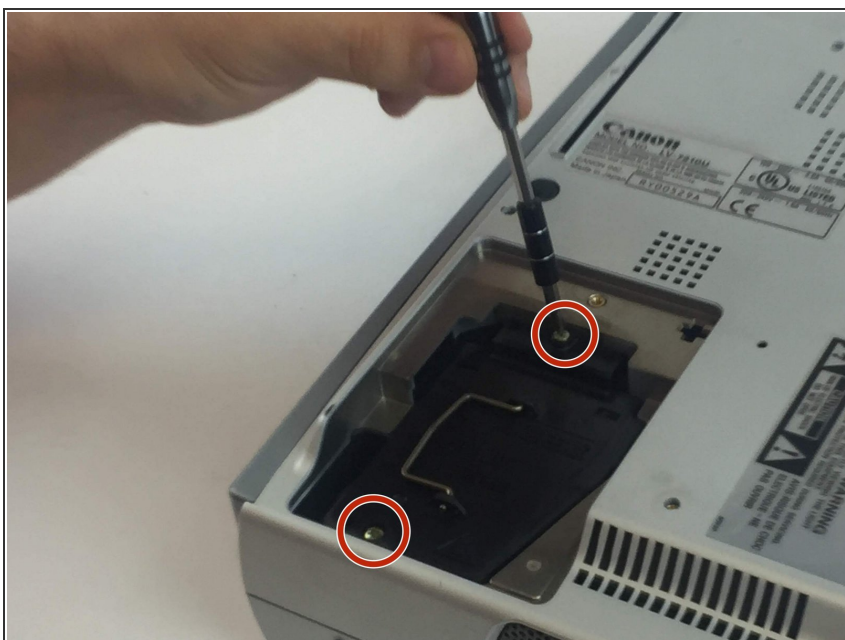
- [Phillips #0 Screwdriver](#) (1)
-

Step 1 — Bulb



- Unscrew the 9mm Phillips #0 screw and remove the panel.

Step 2



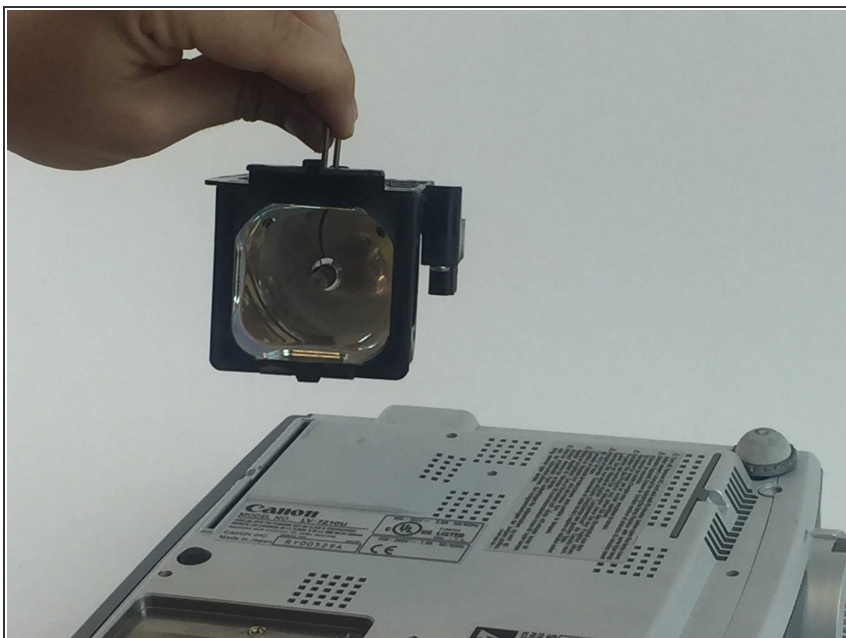
- Unscrew the two 7mm Phillips #0 screws that attach the bulb to the mainframe of the projector.

Step 3



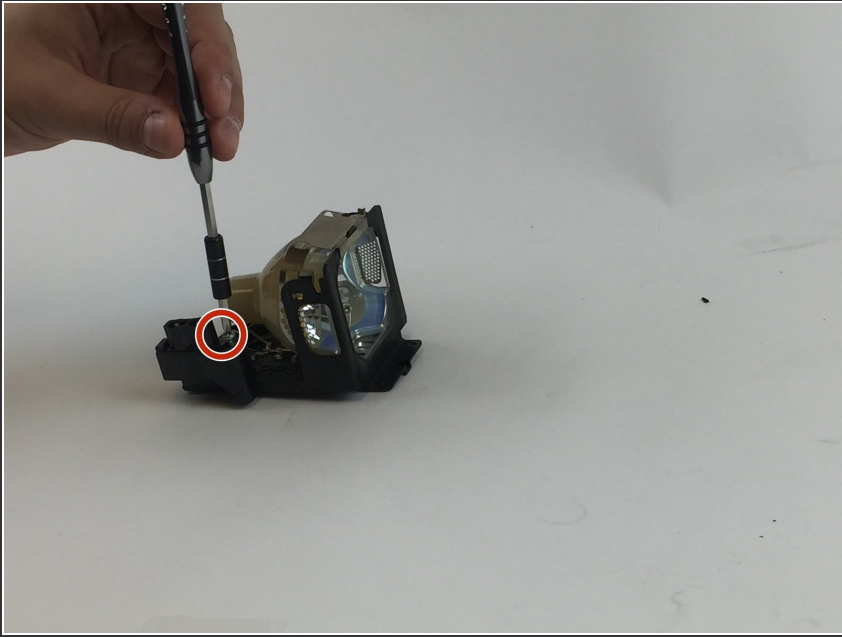
- Remove the bulb housing by gently pulling on the small silver handle located on top of the bulb housing.

Step 4



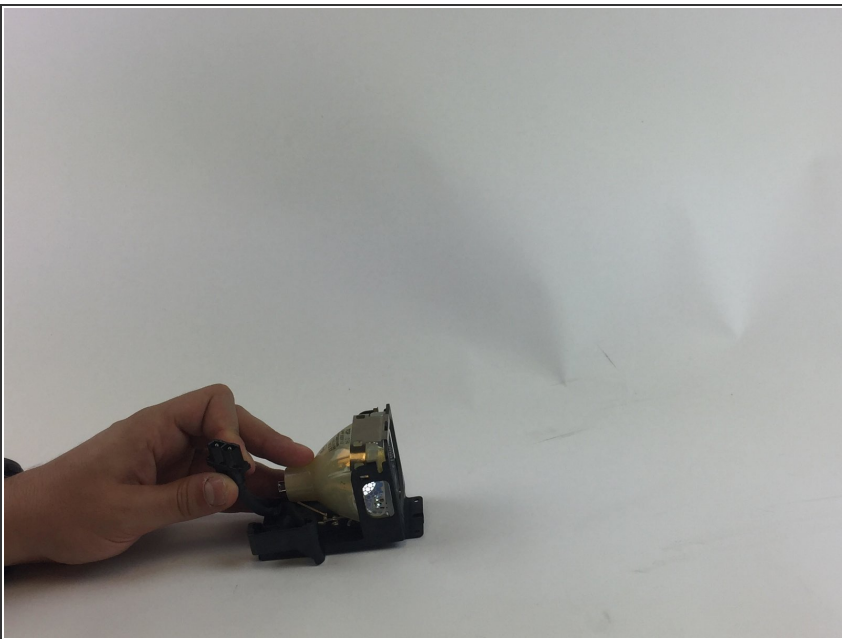
- You may replace the entire housing unit or replace the bulb itself once you remove it from the housing unit.

Step 5



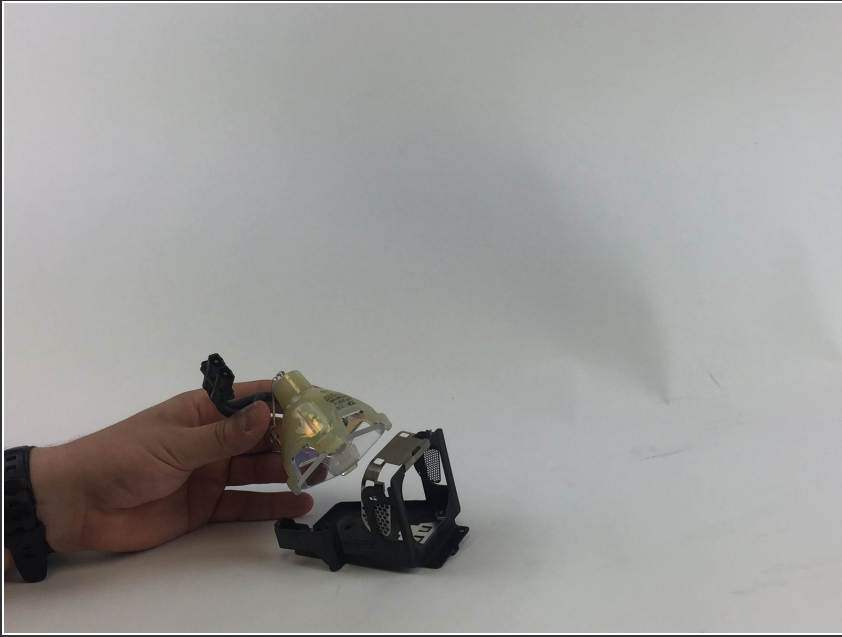
- Unscrew the 9mm Phillips #0 screw.

Step 6



- Pull the wire tubing out of the plastic holder.

Step 7



- Pull the bulb out of the casing.

To reassemble your device, follow these instructions in reverse order.