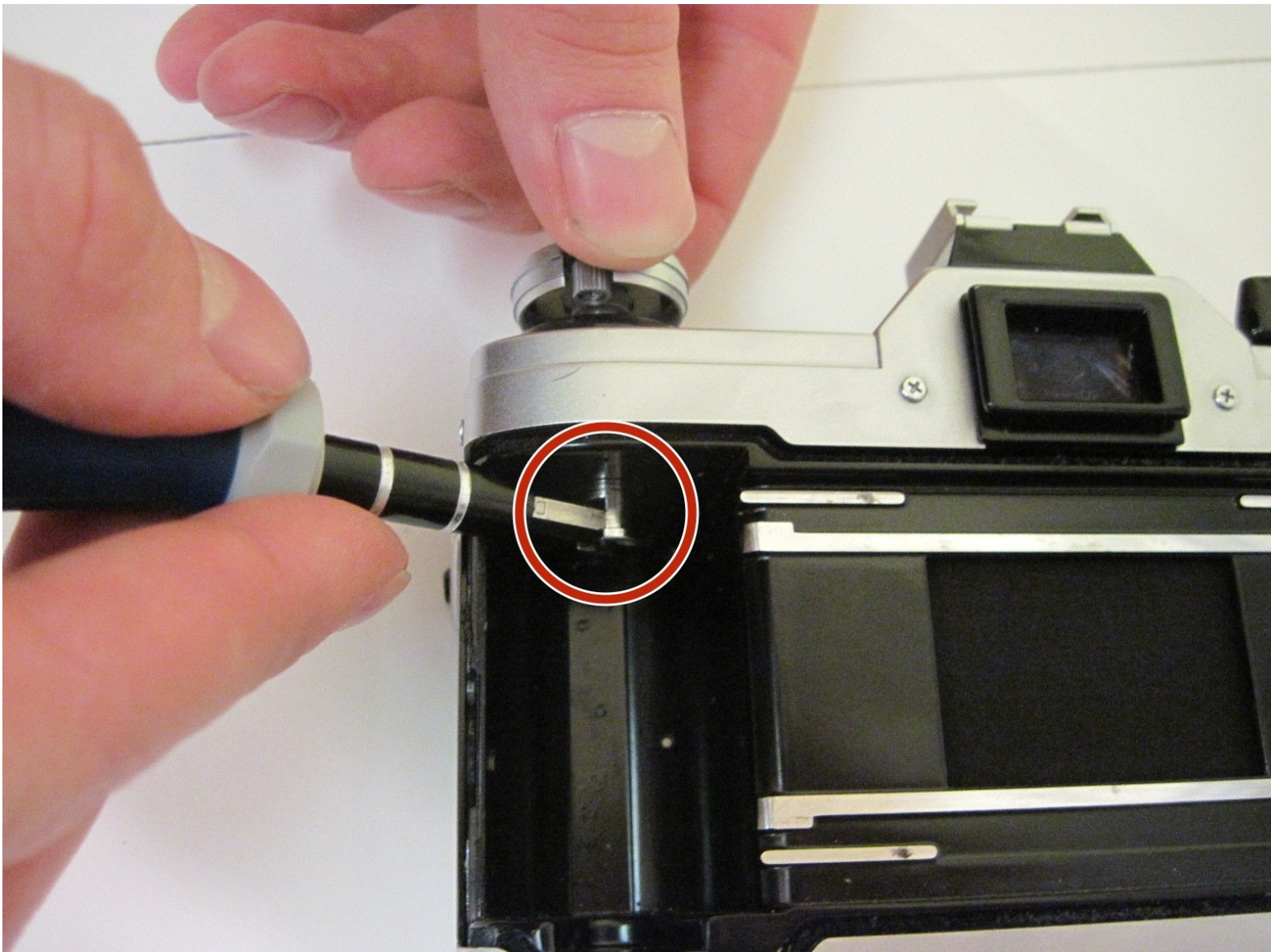




# Canon AE-1 Film Rewind Crank Replacement

How to replace a Canon AE-1 film rewind crank.

Written By: Ben Barber





## TOOLS:

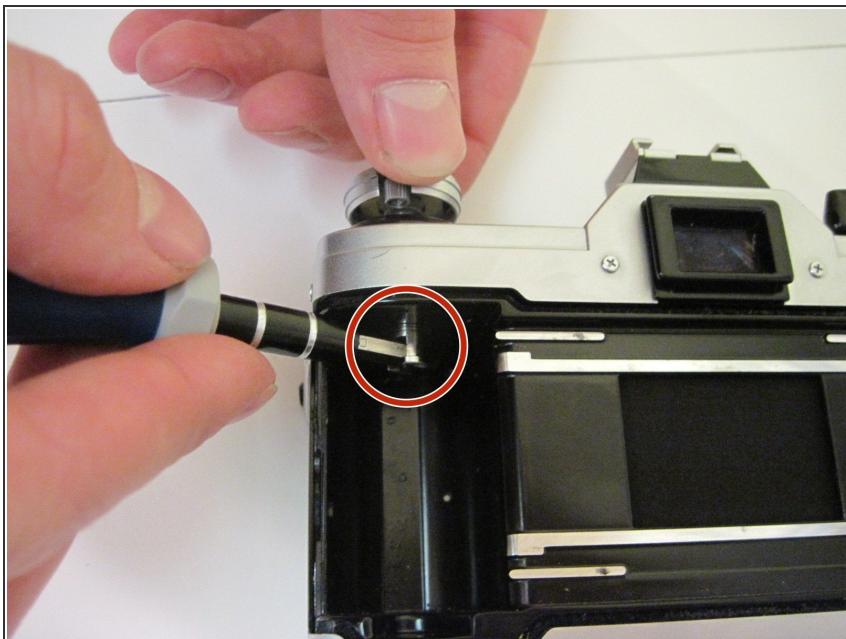
- [Phillips #00 Screwdriver \(1\)](#)
- [Flathead 3/32" or 2.5 mm Screwdriver \(1\)](#)




## PARTS:

- [Replacement film rewind crank \(1\)](#)

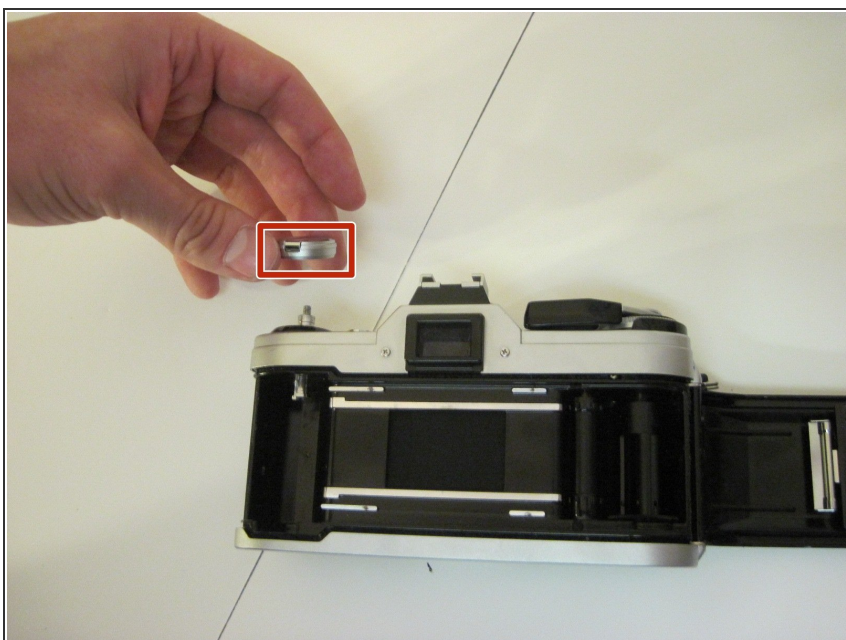
## Step 1 — Film Rewind Crank



 Open film door

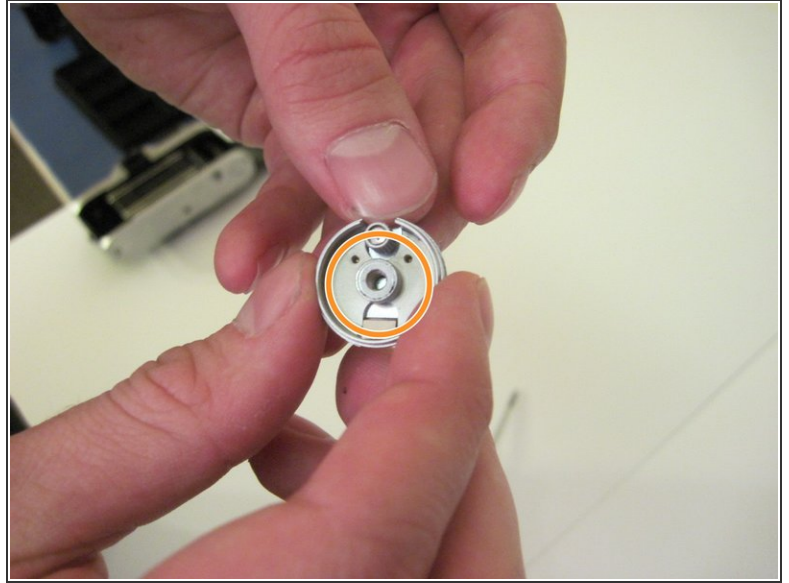
- Place screwdriver in slot as shown to prevent the shaft from moving

## Step 2



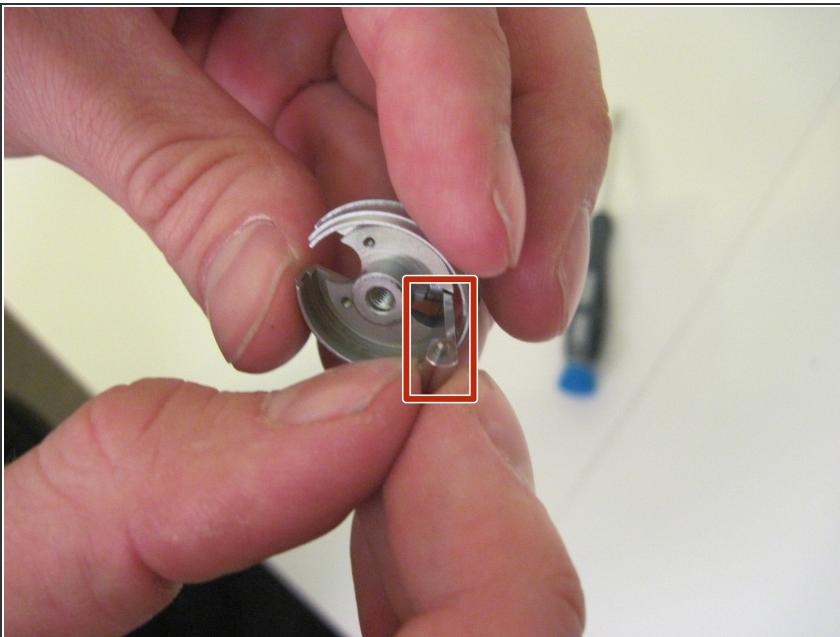
- Rotate crank counter clockwise to remove it

### Step 3



- Remove the two screws
- Remove silver plate held in place by the two screws

### Step 4



- Remove film rewind crank

To reassemble your device, follow these instructions in reverse order.