



Canon AE-1 SLR Lens Mount Replacement

This guide will demonstrate how to remove the SLR Lens Mount on the Canon AE-1.

Written By: Joe Blumberg



INTRODUCTION

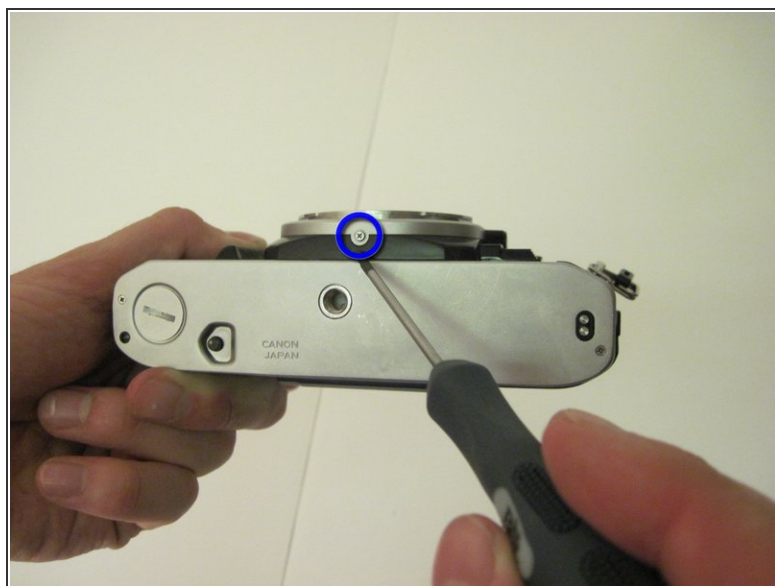
This guide will teach the user how to remove a damaged SLR lens mount on the Cannon AE-1. The SLR lens mount allows the user to connect different lens to the Canon AE-1.



TOOLS:

- [Phillips #00 Screwdriver](#) (1)
-

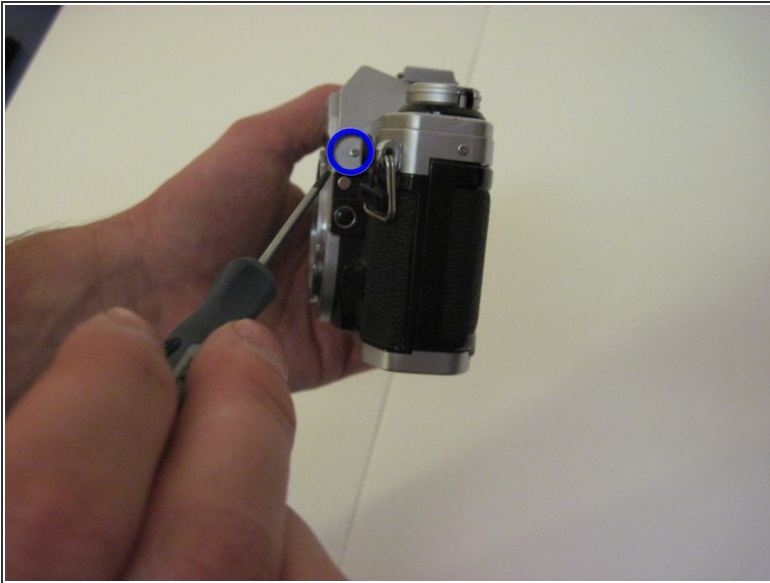
Step 1 — SLR Lens Mount



- Remove the first set of **two** #00 phillips screws from the lens outer casing
 - The first set of screws are located on the front and bottom of the lens casing

ⓘ *Pull the screws out and set them aside so as not to lose them*

Step 2



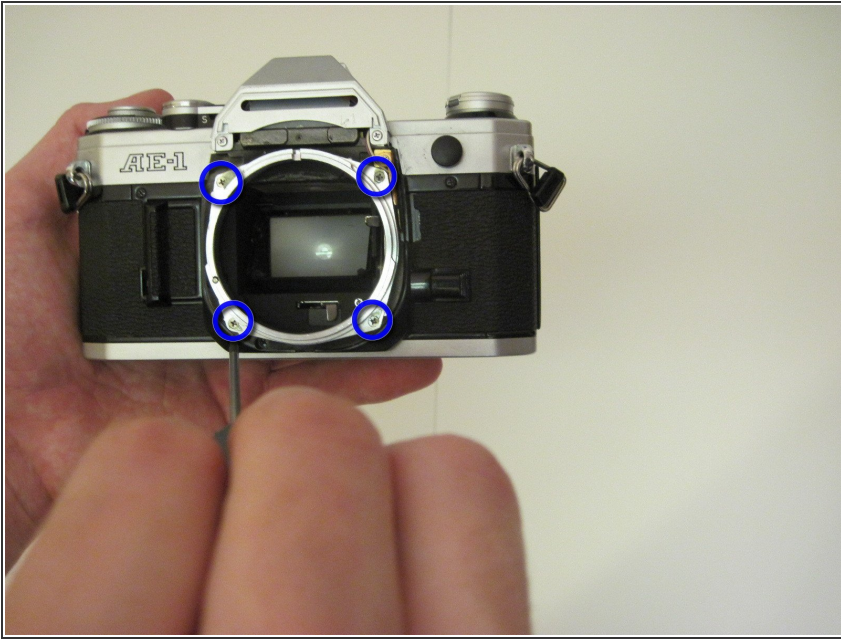
- Remove the remaining **two** #00 phillip screws from the lens outer casing
 - The second set is located left and right side of the lens casing
- ⓘ *Pull the screws out and set them aside so as not to lose them*

Step 3



- Once the screws have been taken out, you may simply remove the lens casing by pulling it away from the body of the camera.

Step 4




- Remove the **four** #00 phillips screws from the SLR Lens Mount

Step 5



- After the screws have been removed, pull the SLR Lens Mount away from the body of the camera

 **Be aware** that a pin will fall out when the SLR Lens Mount is removed.

To reassemble your device, follow these instructions in reverse order.