



# Canon CanoScan N670U Disassembly

This guide will show how to carefully remove the glass scanner bed from the Canon CanoScan N670U to reach the inner parts that lie underneath the scanner bed.

Written By: Stephen Bui



## INTRODUCTION

If you observe any problems inside your scanner, you will have to remove some components to do any work inside your Canon CanoScan N670U.

To reach the inner components of the scanner, you must:

- Remove the two side bars that hold the glass scanner bed in place.
- Remove the glass scanner bed itself.



### TOOLS:

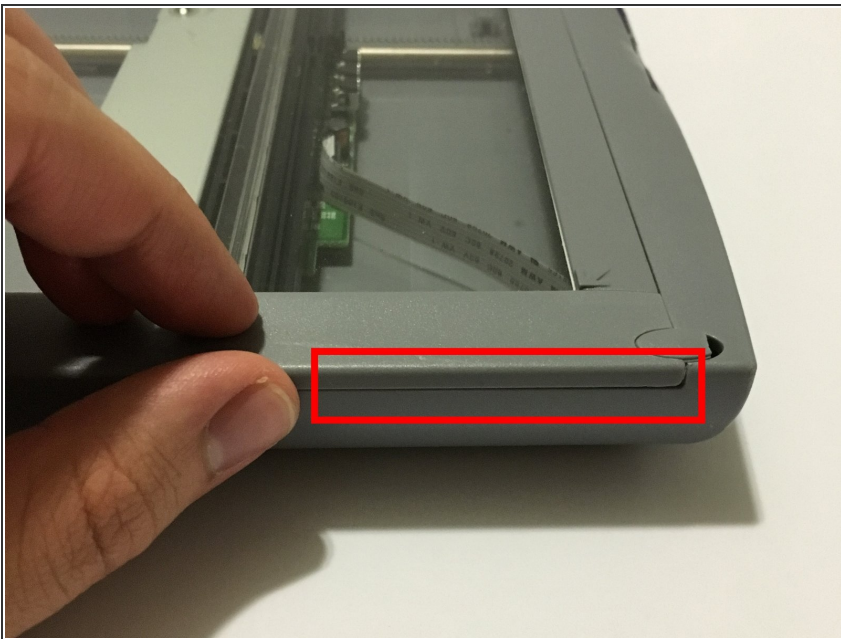
- [Metal Spudger](#) (1)
-

## Step 1 — Canon CanoScan N670U Disassembly



- Open up your Canon CanoScan N670U to an upright position.

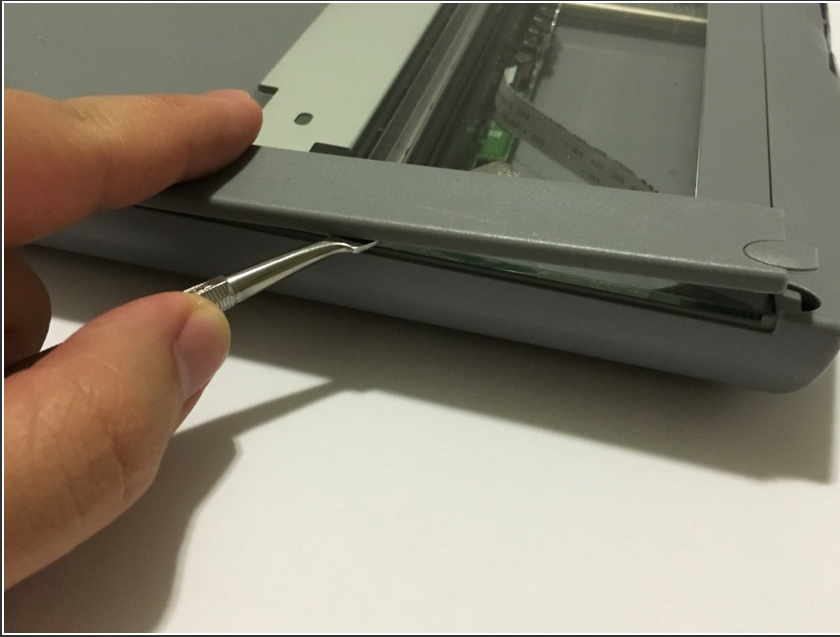
## Step 2



- Turn your device so that you're facing the long side of the Canon CanoScan N670U.
- Locate the small crevice between the plastic components of the scanner bed and the scanner base.



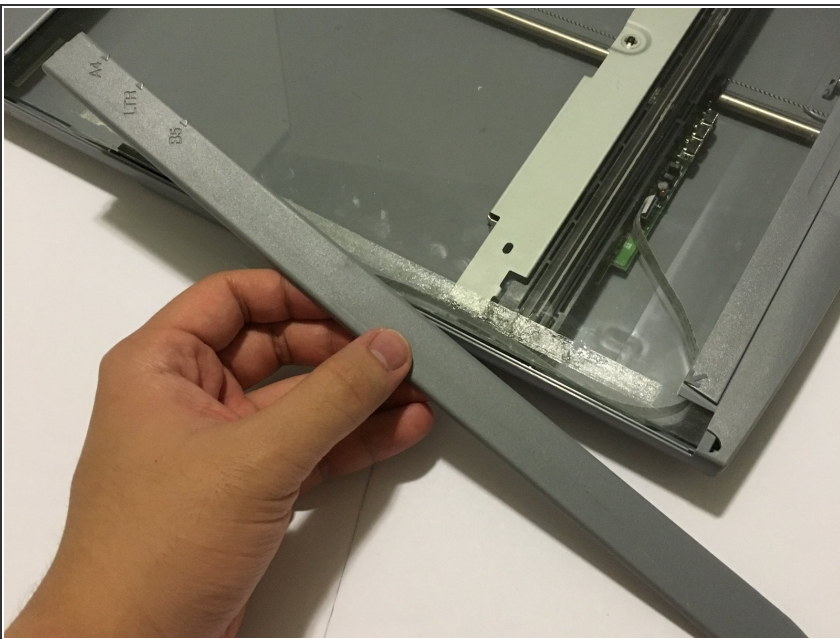
## Step 3



- Carefully insert a metal spudger tool in the crevice and slowly cut through the adhesive between the plastic components.

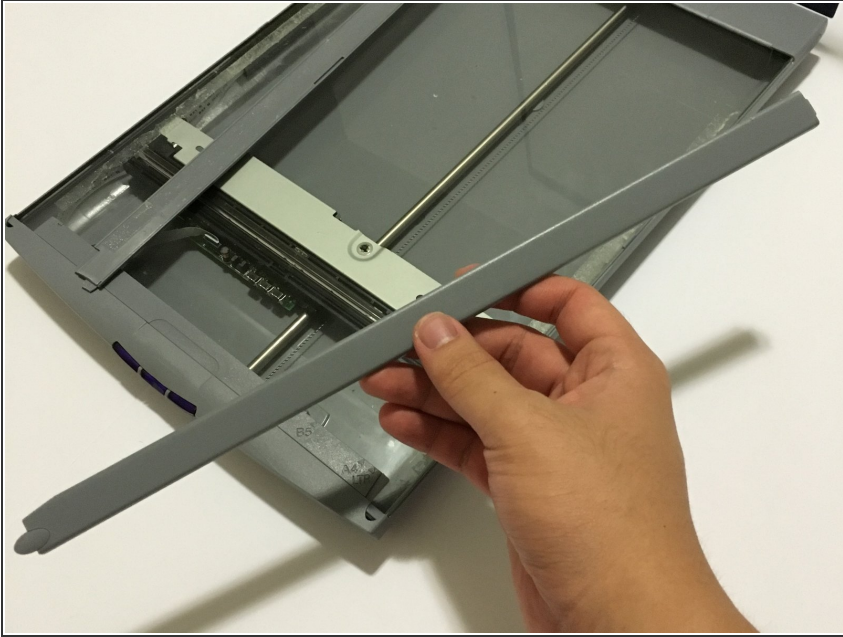
⚠ You may cut small bits of the plastic as you're slicing the adhesive. Do not forcefully bend the plastic strip as you're cutting or it will snap.

## Step 4



- Once the adhesive strip is sliced through, the plastic bar that is attached should release. Set aside the plastic bar.

## Step 5



- Repeat steps 2-4 for the other side of the scanner.

## Step 6



- Use your hands or a metal spudger tool to push the plastic bar at the bottom of the glass scanner bed forward until you can't push it any farther.

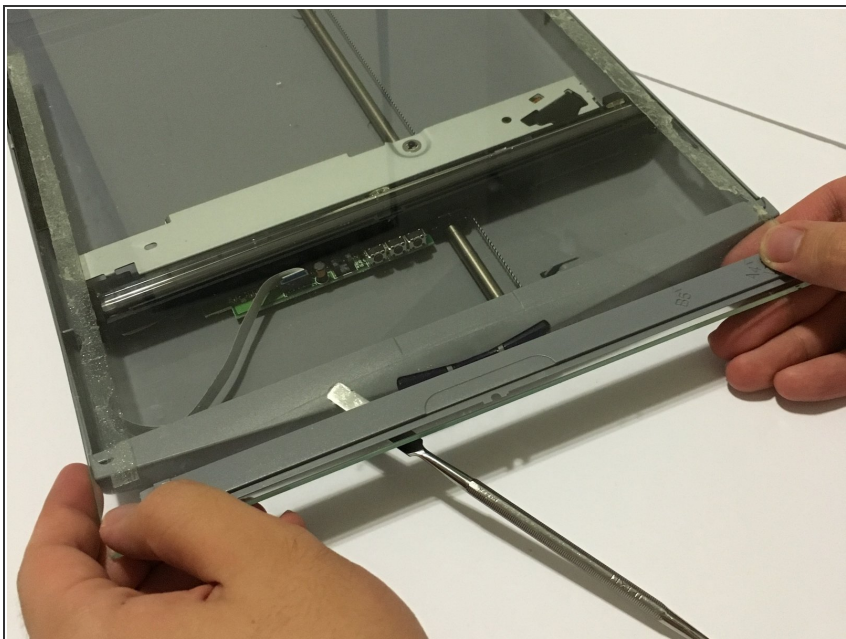
## Step 7



- Insert the metal spudger tool underneath the glass scanner bed. The front of the scanner bed should be resting on top of the tool.



## Step 8



- Slowly pull the glass scanner bed towards you and set the piece aside.

To reassemble your device, follow these instructions in reverse order.