



Canon CanoScan N670U Glass Scanner Bed Replacement

This guide will show how to carefully replace the glass scanner bed of the Canon CanoScan N670U.

Written By: Stephen Bui



INTRODUCTION

If you're encountering issues as a result from the scanner bed, this is where you will want to start.

To replace the glass scanner bed, you must:

- Remove the two plastic bars that holds the scanner bed in place.
- Carefully remove the glass scanner bed to add the replacement.



TOOLS:

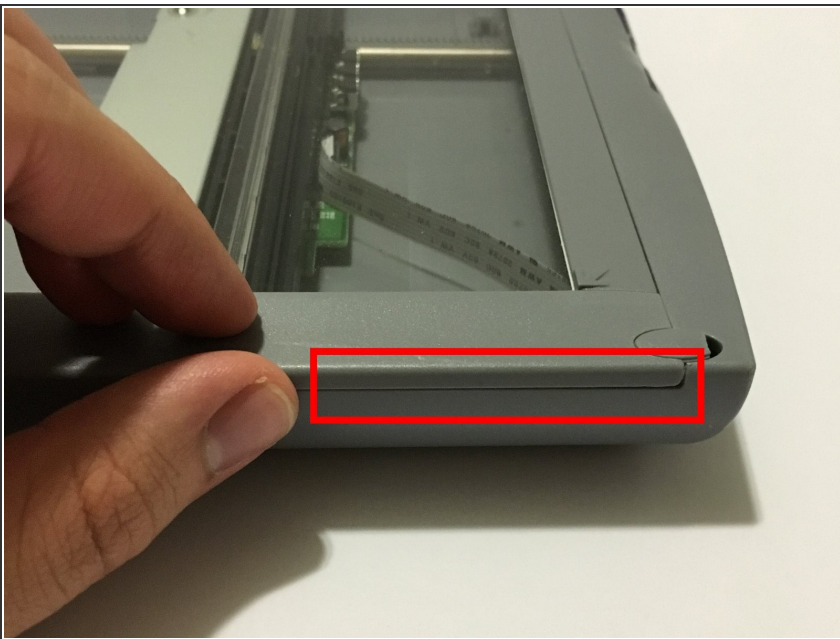
- [Metal Spudger](#) (1)

Step 1 — Canon CanoScan N670U Disassembly



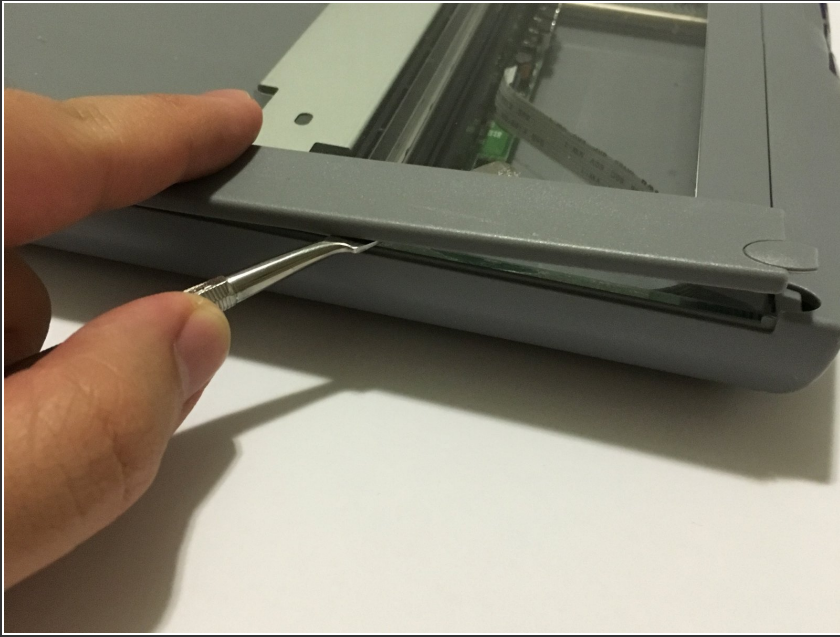
- Open up your Canon CanoScan N670U to an upright position.

Step 2




- Turn your device so that you're facing the long side of the Canon CanoScan N670U.
- Locate the small crevice between the plastic components of the scanner bed and the scanner base.

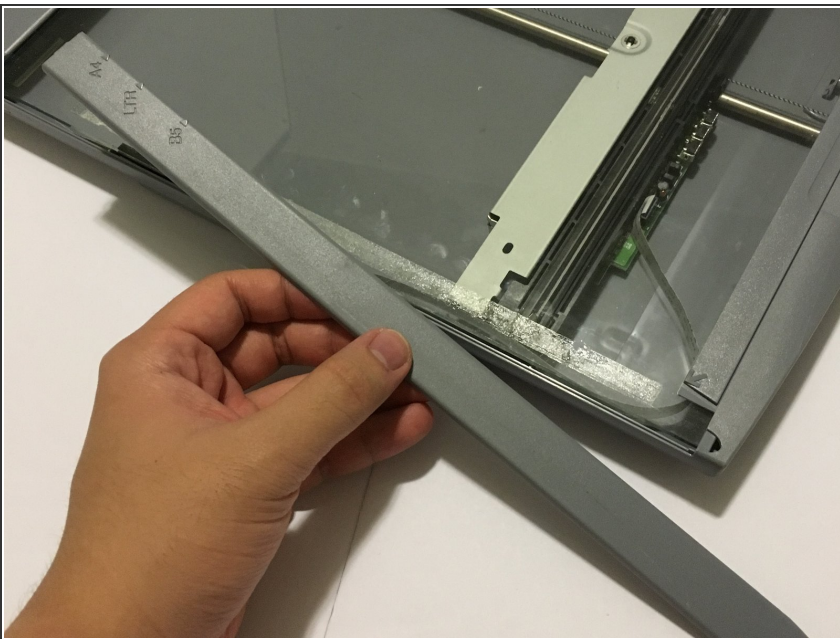
Step 3



- Carefully insert a metal spudger tool in the crevice and slowly cut through the adhesive between the plastic components.

 You may cut small bits of the plastic as you're slicing the adhesive. Do not forcefully bend the plastic strip as you're cutting or it will snap.

Step 4



- Once the adhesive strip is sliced through, the plastic bar that is attached should release. Set aside the plastic bar.

Step 5



- Repeat steps 2-4 for the other side of the scanner.

Step 6



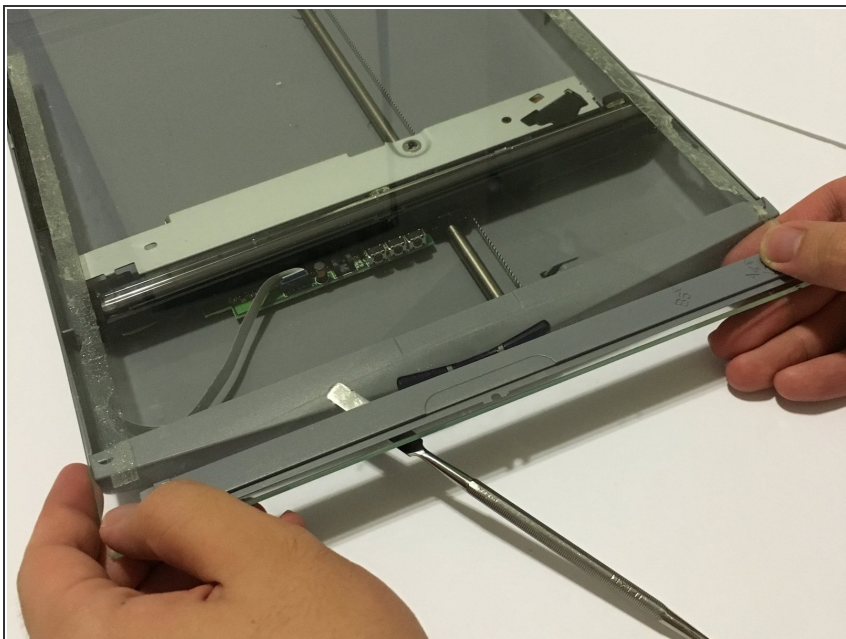
- Use your hands or a metal spudger tool to push the plastic bar at the bottom of the glass scanner bed forward until you can't push it any farther.

Step 7



- Insert the metal spudger tool underneath the glass scanner bed. The front of the scanner bed should be resting on top of the tool.

Step 8



- Slowly pull the glass scanner bed towards you and set the piece aside.

Step 9 — Glass Scanner Bed



- Replace your defective glass scanner bed with a new one.

To reassemble your device, follow these instructions in reverse order.