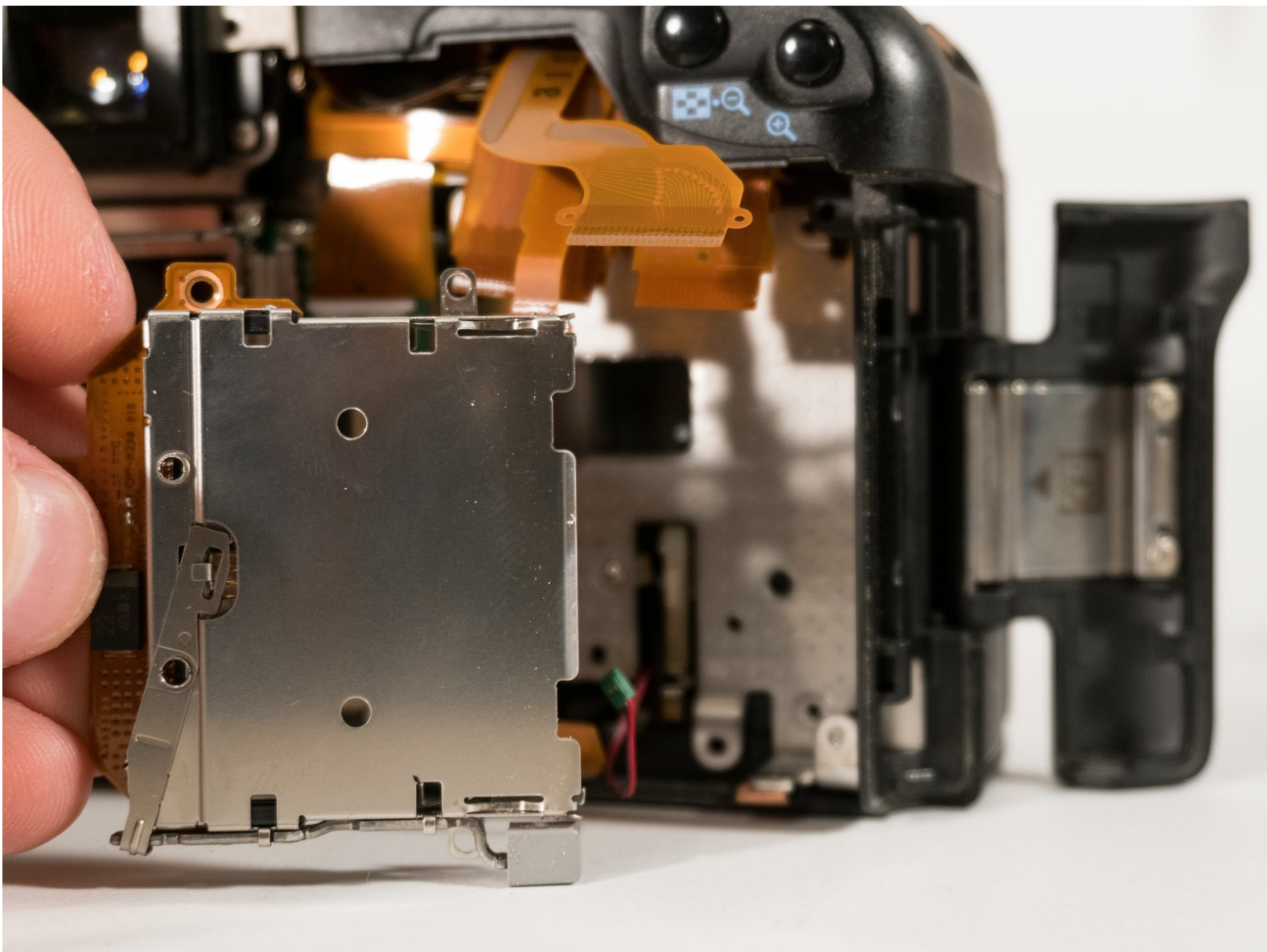




Canon EOS 20D CF Card Slot Replacement

This will help people to fix/replace their CF card slot with damaged pins, which is a fairly typical issue for this model of camera.

Written By: Alec M





TOOLS:

- [Fingers](#) (2)

Thumbs

I hope you at least have two fingers even if they aren't thumbs :D

- [Phillips #0 Screwdriver](#) (1)
- [Essential Electronics Toolkit](#) (1)

Step 1 — Remove the eyepiece cap



- Pull up on both sides of the the eyepiece cap. It should come off with little pressure.

Step 2 — Remove screws from under the eyepiece cap



- Remove the two screws hidden under the viewfinder eyepiece cap.

Step 3 — Remove hidden screw and other visible screw



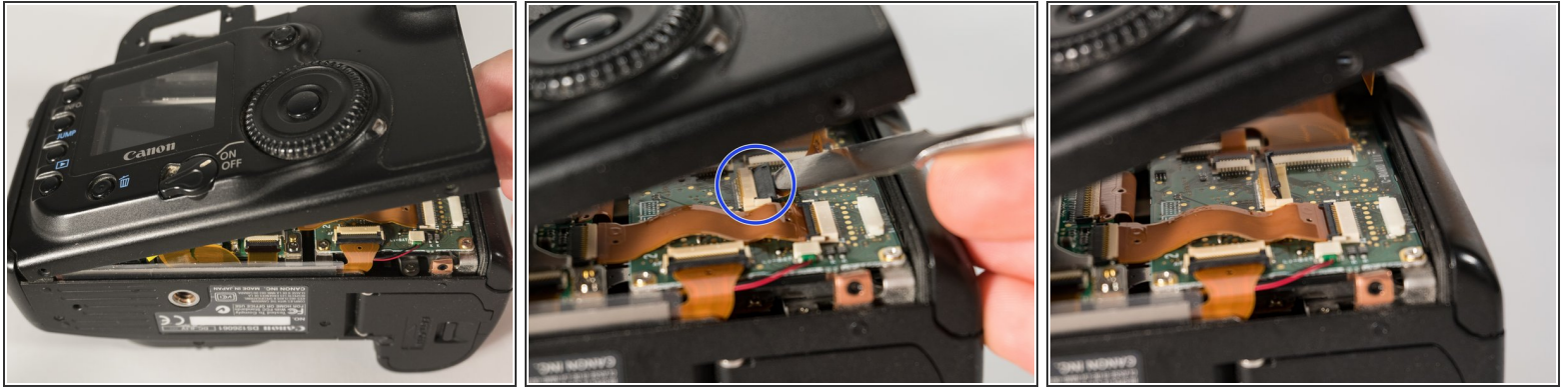
- Peel off the rubber grip on the back by grasping one of the corners and pulling out.
- Once removed, a hidden screw is revealed.
- Remove both visible screws from the rear of the camera.


Step 4 — Remove bottom screws




- Remove both labeled screws from the bottom of the camera.

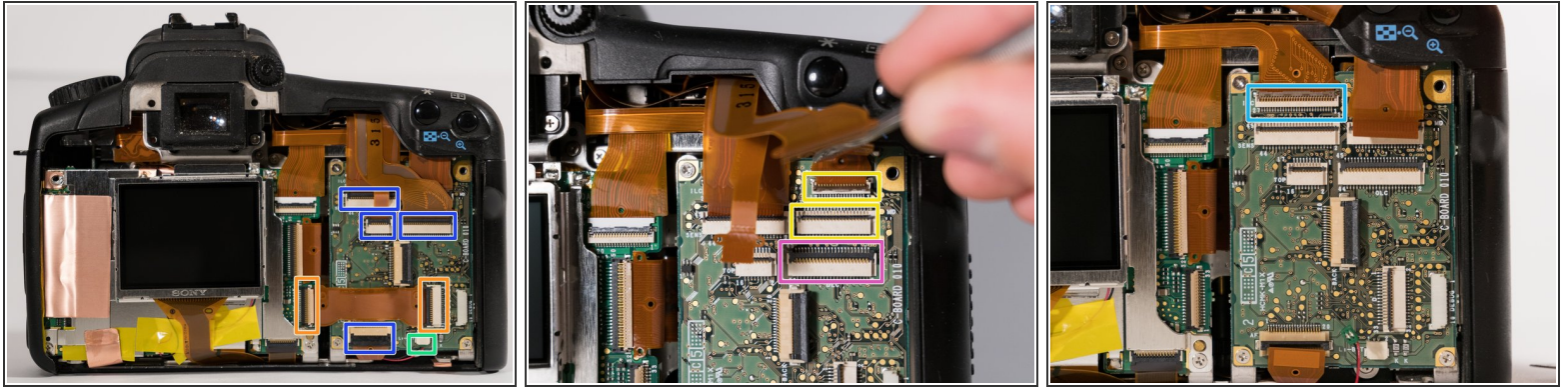
Step 5 — Lift and remove the rear panel



 When lifting the panel, make sure not to lift it too high, since you'll run the risk of tearing the cable, or damaging the connector on the board.

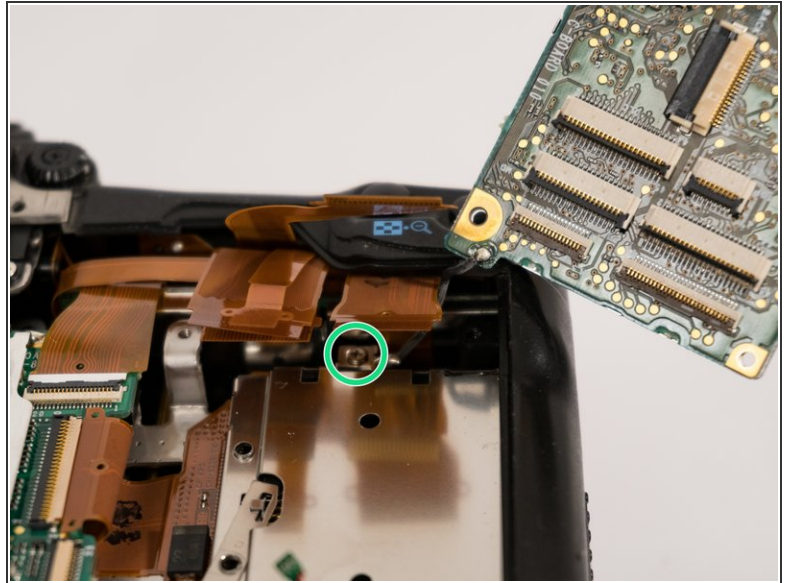
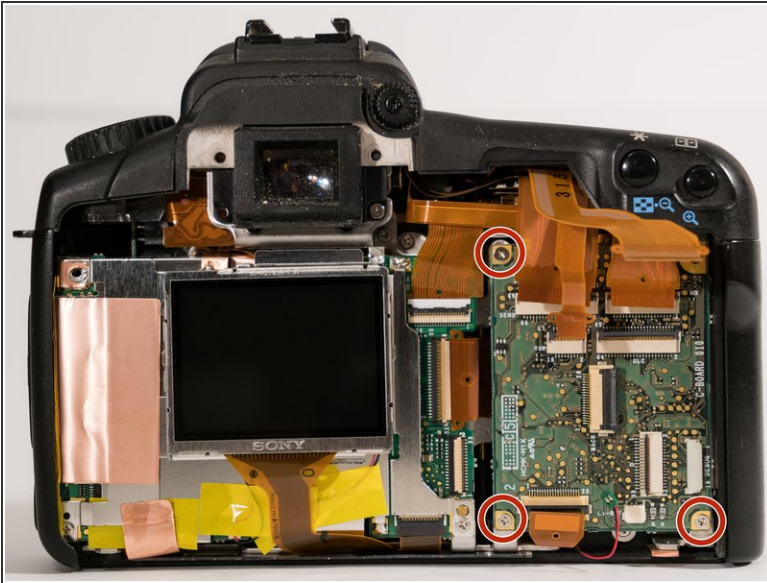
- Flip the lock on the flex cable connector up with a spudger.
 - The front panel should pop off now that the cable has been disconnected.
-  When reassembling the device, make sure to insert the left side of the front panel first, since it has a small lip that needs to fit under the left part of the camera case.

Step 6 — Disconnect all the labeled cables



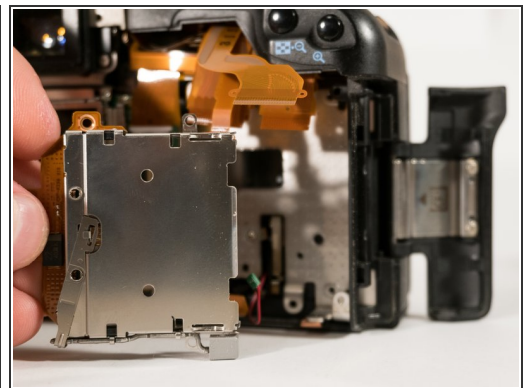
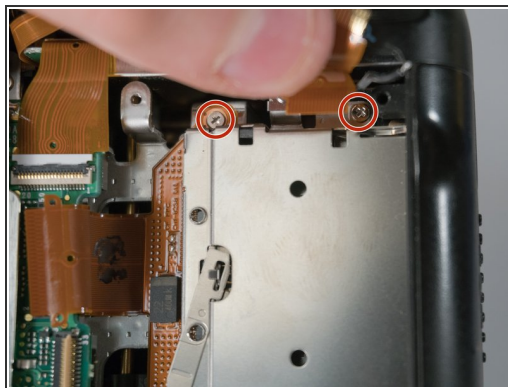
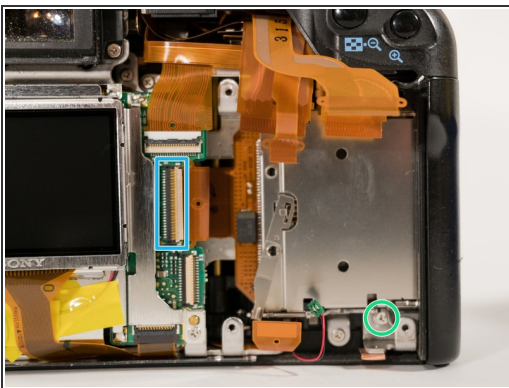
- Disconnect all the labeled connectors by opening their latches.
- Remove the flex cable that connects the logic board to the secondary control board.
- Pull the small green connector out of its socket. Be careful when removing it, as it is possible to tear the tiny wires running to the connector.
- Disconnect the two hidden connectors under the top connector labeled in pink.
- Disconnect the third hidden connector.

Step 7 — Remove the secondary control board



- Remove the three screws from the edges of the board.
- Flip the board up and out so that the ground connection can be unscrewed.

Step 8 — CF Card Slot



- Open the connector for the CF slot.
- Remove the two screws holding the top of the CF slot in place.
- Remove the one last screw holding the CF slot in on the bottom.
- Remove the CF slot.

To reassemble your device, follow these instructions in reverse order.