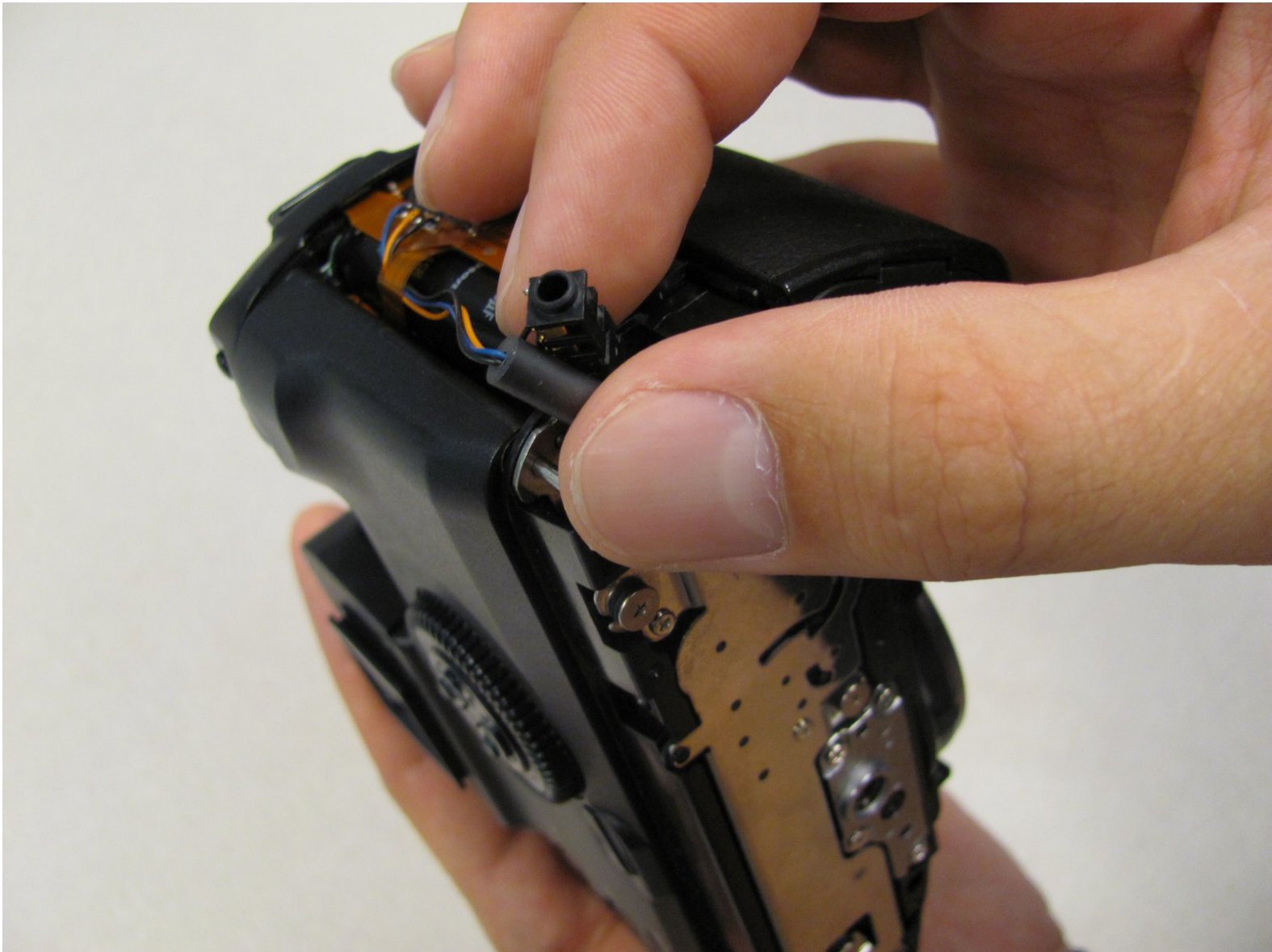




# Canon EOS 30 Remote Control Socket Replacement

How to access the Remote Control Socket.

Written By: Antonia



---

## INTRODUCTION

The Remote Control Socket is not difficult to access. However, it's connections are soldered, so it will be difficult to remove.



### TOOLS:

- [Phillips #00 Screwdriver](#) (1)
-

## Step 1 — Front Panel



- Remove the two 4.8 mm black screws above the lens on the front of the camera.

## Step 2



- Remove the 4.3 mm black screw under the lens ring, and the 4.8 mm black screw under the camera.



### Step 3



- Remove the 4.8 mm black screw on the left side of the camera.

### Step 4



- Remove the front panel by lifting it away from the camera's body.

## Step 5 — Bottom Panel



- Remove seven 4.25 mm black screws on the bottom panel.

## Step 6



- Remove the bottom panel.

## Step 7 — Side Panel With Remote Control Socket



- Remove two 6.5 mm black screws from the panel.

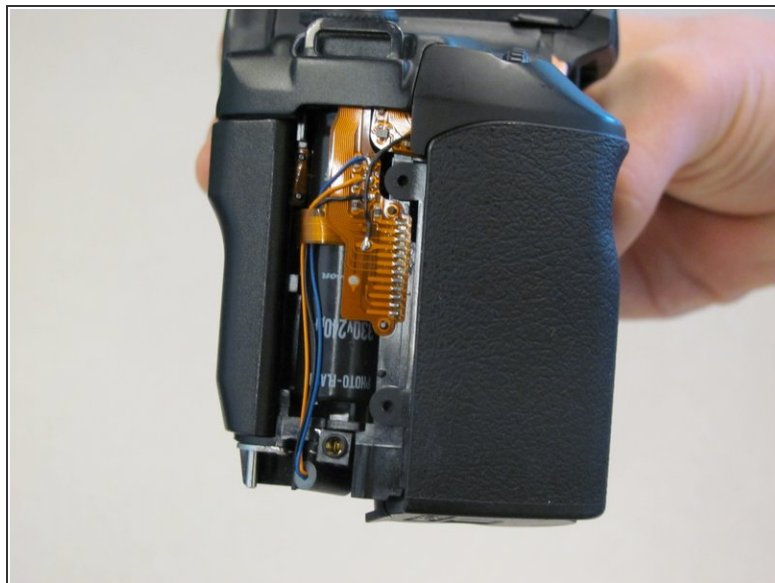
## Step 8



- Remove the plastic remote control socket cap by pulling it straight out.



## Step 9



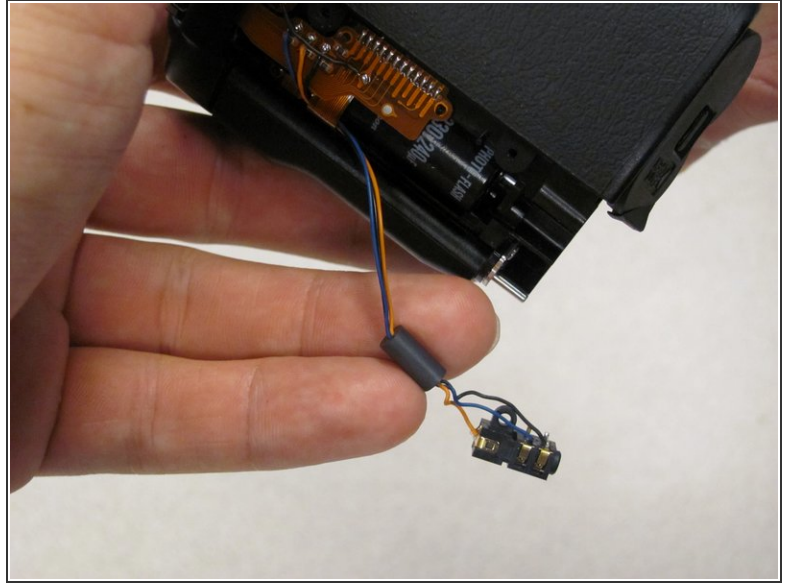
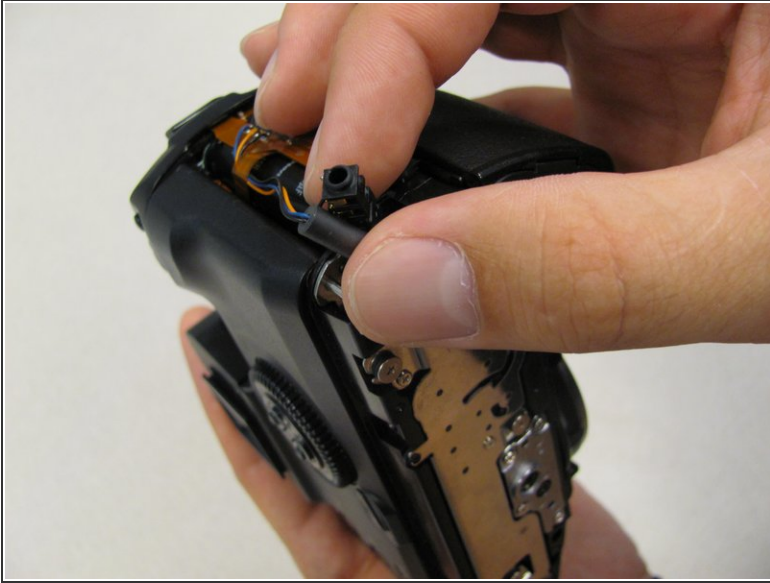
- Slide panel toward bottom of camera to remove.

## Step 10 — Remote Control Socket



- Remove one 4.8 mm silver screw securing Remote Control Socket to camera.

## Step 11



- Remote Control Socket is now secured by 3 wires.
- Desolder connections to replace Remote Control Socket.

To reassemble your device, follow these instructions in reverse order.