



Canon EOS 30 Side Panel With Remote Control Socket Replacement

How to remove the side panel with Remote Control Socket.

Written By: Sterling Vinson



INTRODUCTION

Removing the side panel with Remote Control Socket is safe and simple. It only requires a screwdriver.



TOOLS:

- [Phillips #00 Screwdriver](#) (1)
-

Step 1 — Front Panel



- Remove the two 4.8 mm black screws above the lens on the front of the camera.

Step 2



- Remove the 4.3 mm black screw under the lens ring, and the 4.8 mm black screw under the camera.

Step 3



- Remove the 4.8 mm black screw on the left side of the camera.

Step 4



- Remove the front panel by lifting it away from the camera's body.

Step 5 — Bottom Panel



- Remove seven 4.25 mm black screws on the bottom panel.

Step 6



- Remove the bottom panel.

Step 7 — Side Panel With Remote Control Socket



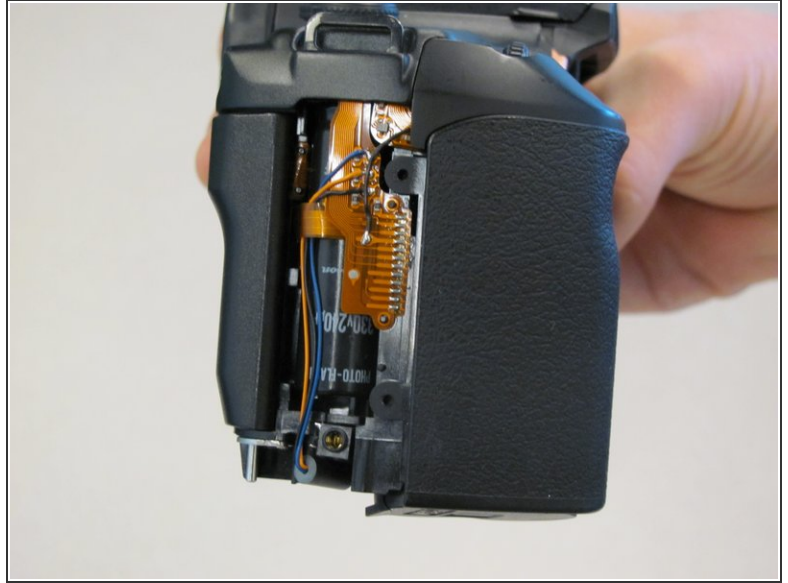
- Remove two 6.5 mm black screws from the panel.

Step 8



- Remove the plastic remote control socket cap by pulling it straight out.

Step 9



- Slide panel toward bottom of camera to remove.

To reassemble your device, follow these instructions in reverse order.