



# Canon EOS 300 Battery Door Replacement

This guide shows how to replace the batteries.

Written By: Jordan Tang



---

## INTRODUCTION

If the camera is not turning on, the batteries may need to be replaced.



### TOOLS:

- [Phillips #00 Screwdriver](#) (1)
  - [Spudger](#) (1)
-

## Step 1 — Batteries



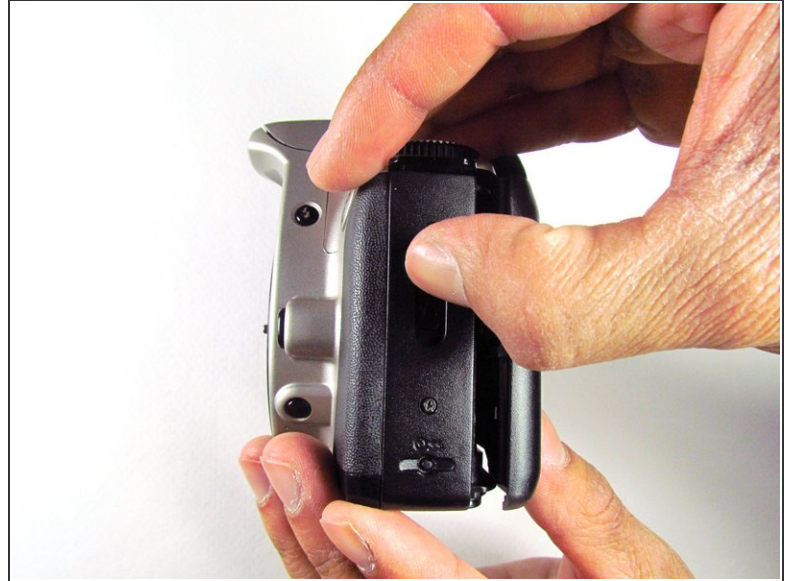
- Open up the battery door.

## Step 2



- Remove the batteries from the camera by sliding them out into your palm.

### Step 3 — Side Panel with Lever



- Release the side latch to open the back panel.

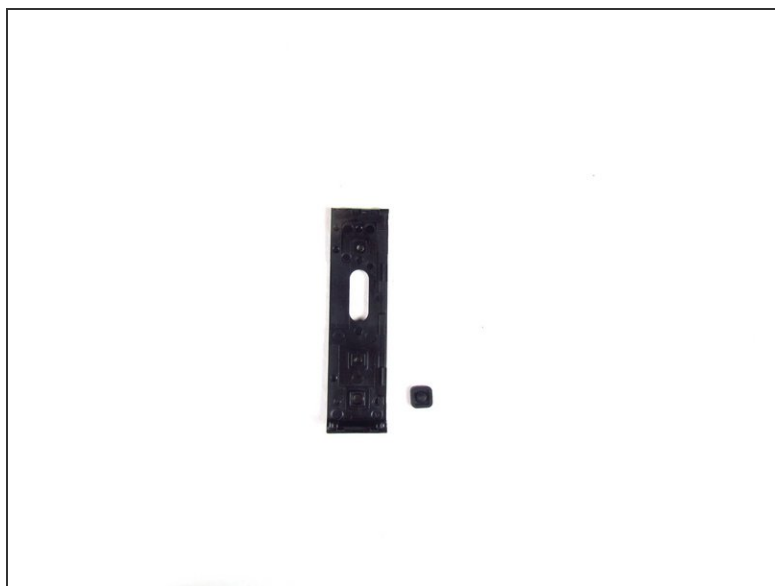
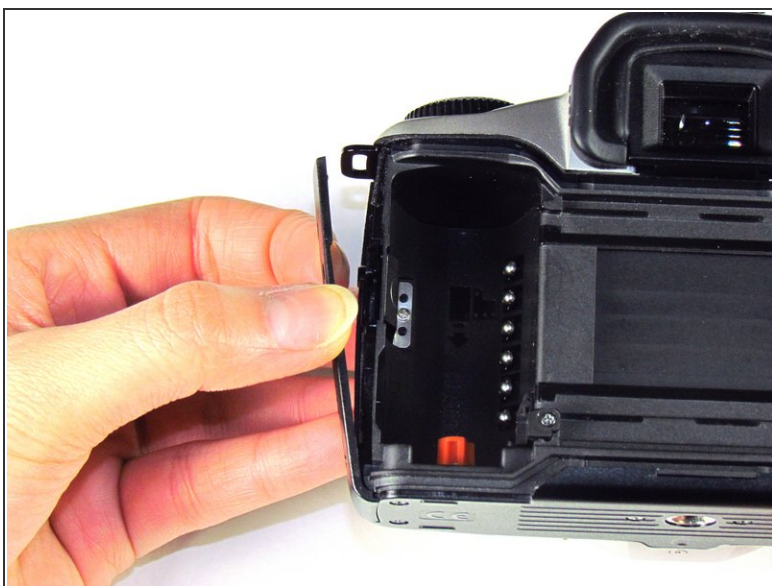
### Step 4



- Remove the two black 4.5mm screws above and below the latch.



## Step 5



- Using your finger, carefully pry open the side panel from the top of camera.
- Pull panel downwards to remove.
- ⓘ Make sure to keep track of the small black piece of rubber under the latch.

## Step 6 — Front Panel



- Remove the two silver 6mm Phillips #1 screws.

## Step 7



- Flip camera over to the bottom.
- Remove the one 5mm Phillips #1 silver screw.

## Step 8



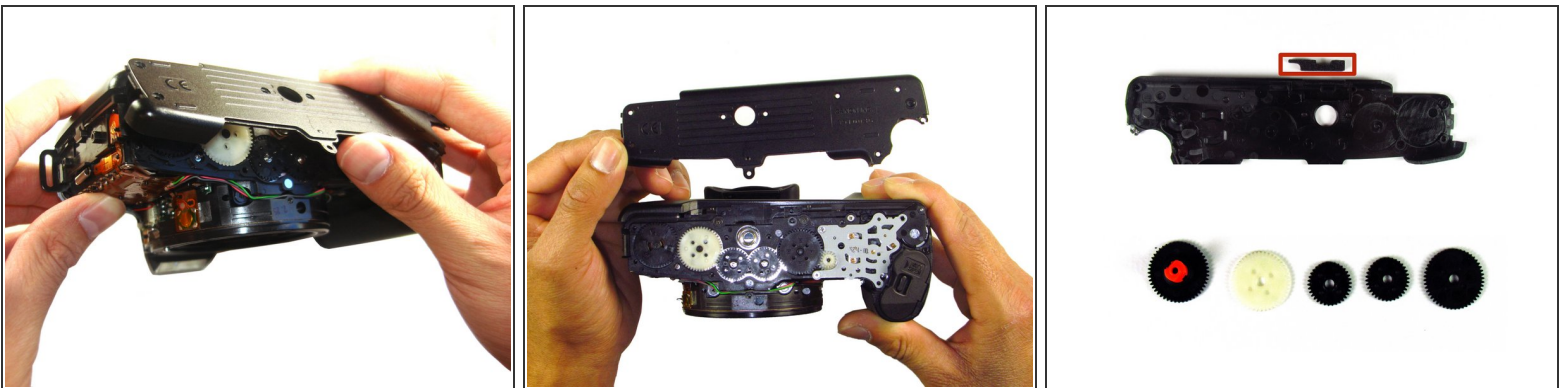
- Remove the front panel by pulling away from the side with the lever.

## Step 9 — Bottom Panel



- Remove three black 7.3mm Phillips #1 screws located on the corners of the camera.
- Remove five black 4.8mm Phillips #1 screws.

## Step 10



- Simply remove the bottom panel by prying it off with your finger.

⚠ When removing the panel, be sure the bottom of the camera is facing upright. There are loose gears that may fall out.

- Be wary of a loose piece of foam attached to the bottom panel.



## Step 11 — Side Panel with Grip



- Remove the remote control socket cover.

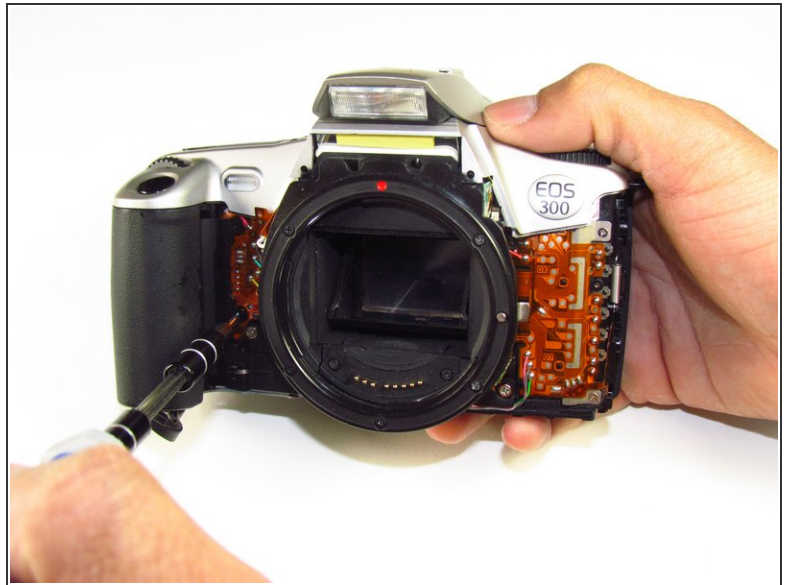
## Step 12



- Remove two black 4.5mm Phillips #1 screws.

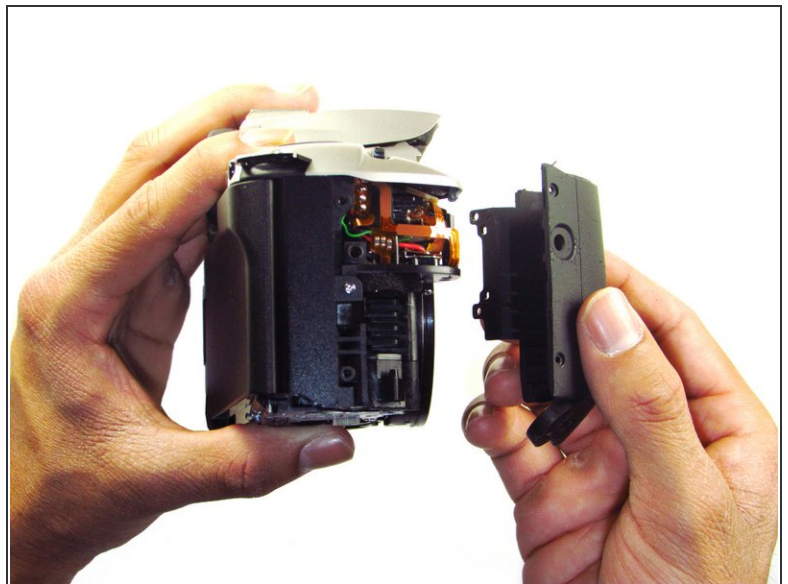


## Step 13



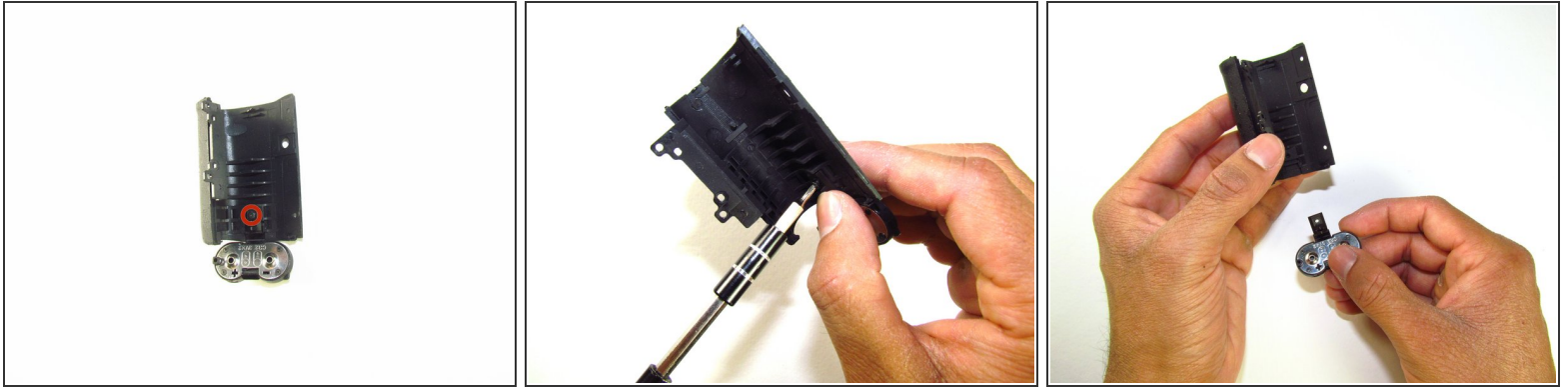
- Remove two black 4.8mm Phillips #1 screws on the front of the camera.

## Step 14



- Pry open the side grip using a spudger.

## Step 15 — Battery Door



- Remove one black 5mm Phillips #1 screw.

To reassemble your device, follow these instructions in reverse order.