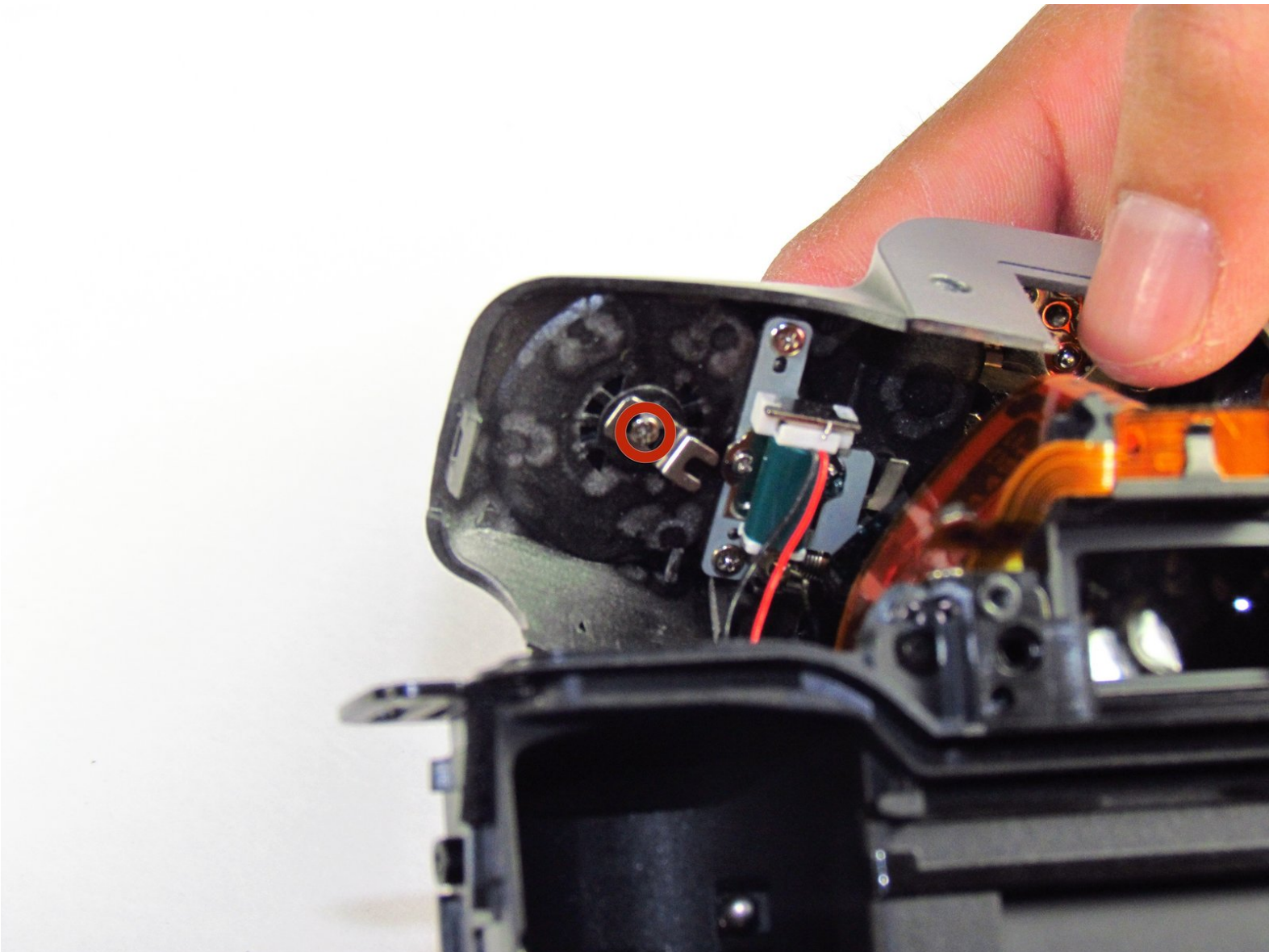




# Canon EOS 300 Command Dial Replacement

Remove screw fastening dial to pull the dial out.

Written By: Tammy Kong



---

## INTRODUCTION

Use this guide to replace your camera's command dial.



### TOOLS:

- [Phillips #00 Screwdriver](#) (1)
  - [Spudger](#) (1)
-

## Step 1 — Batteries



- Open up the battery door.

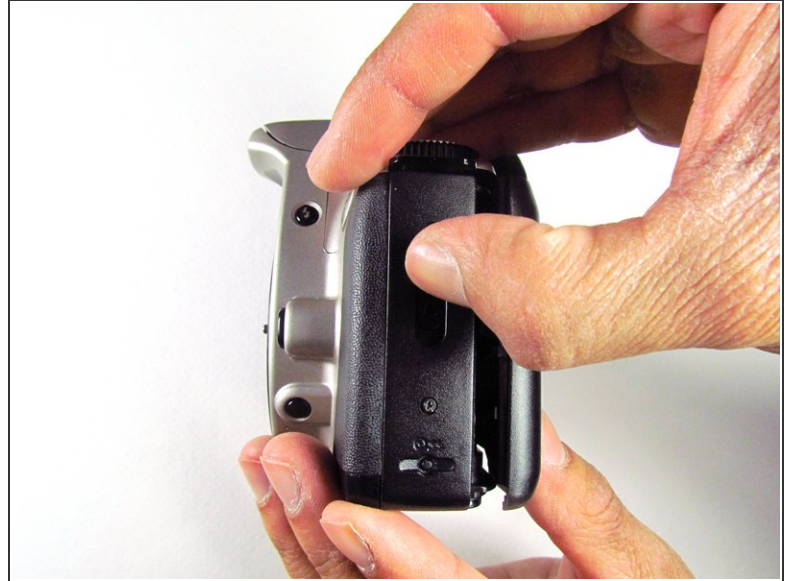
## Step 2



- Remove the batteries from the camera by sliding them out into your palm.



### Step 3 — Side Panel with Lever



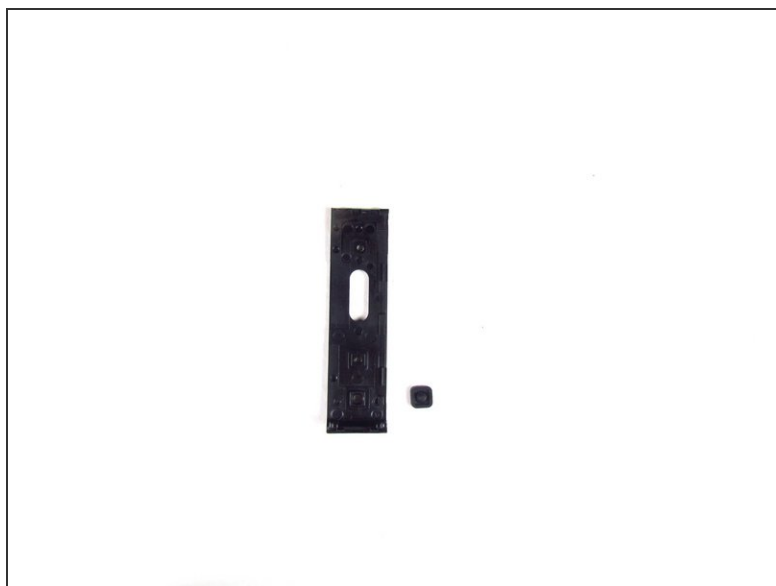
- Release the side latch to open the back panel.

### Step 4



- Remove the two black 4.5mm screws above and below the latch.

## Step 5



- Using your finger, carefully pry open the side panel from the top of camera.
  - Pull panel downwards to remove.
- i** Make sure to keep track of the small black piece of rubber under the latch.

## Step 6 — Front Panel



- Remove the two silver 6mm Phillips #1 screws.



## Step 7



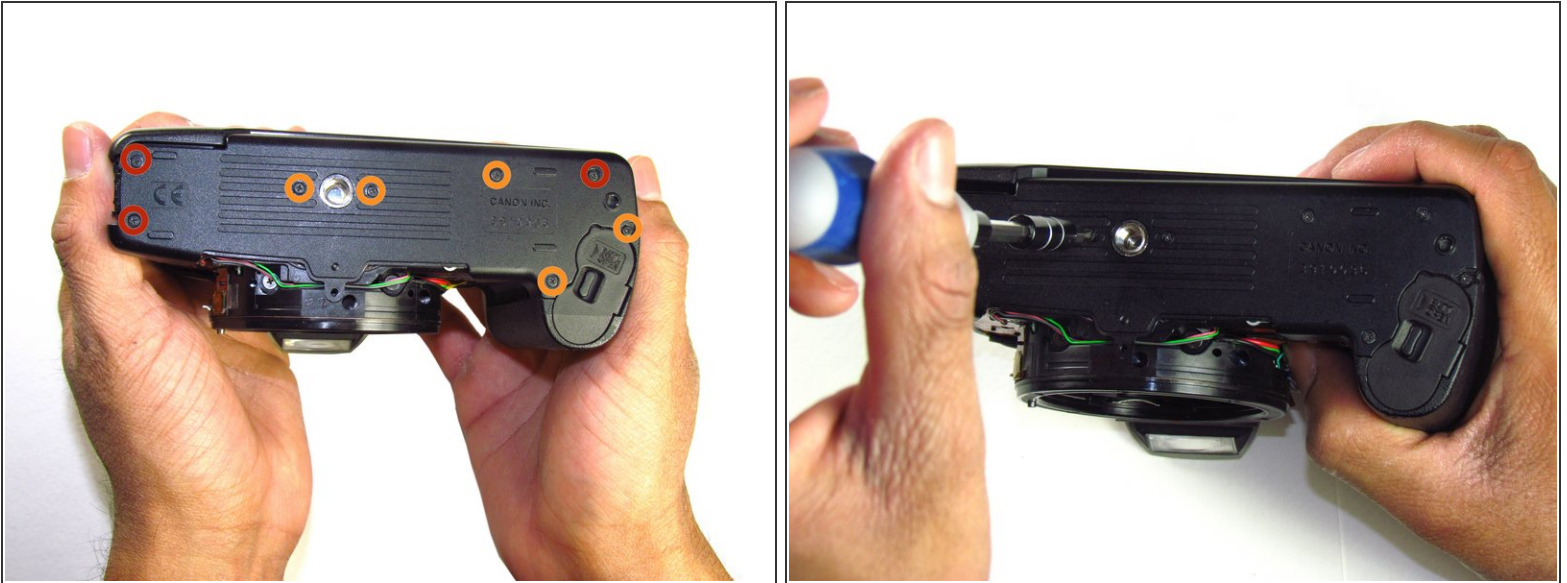
- Flip camera over to the bottom.
- Remove the one 5mm Phillips #1 silver screw.

## Step 8



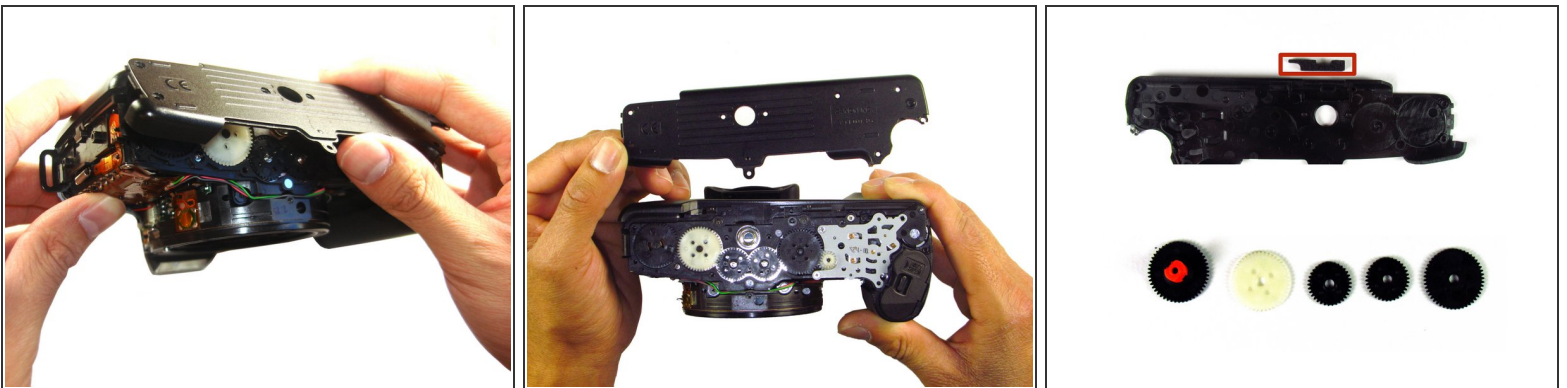
- Remove the front panel by pulling away from the side with the lever.

## Step 9 — Bottom Panel



- Remove three black 7.3mm Phillips #1 screws located on the corners of the camera.
- Remove five black 4.8mm Phillips #1 screws.

## Step 10



- Simply remove the bottom panel by prying it off with your finger.
- ⚠ When removing the panel, be sure the bottom of the camera is facing upright. There are loose gears that may fall out.
- Be wary of a loose piece of foam attached to the bottom panel.

## Step 11 — Side Panel with Grip



- Remove the remote control socket cover.

## Step 12



- Remove two black 4.5mm Phillips #1 screws.

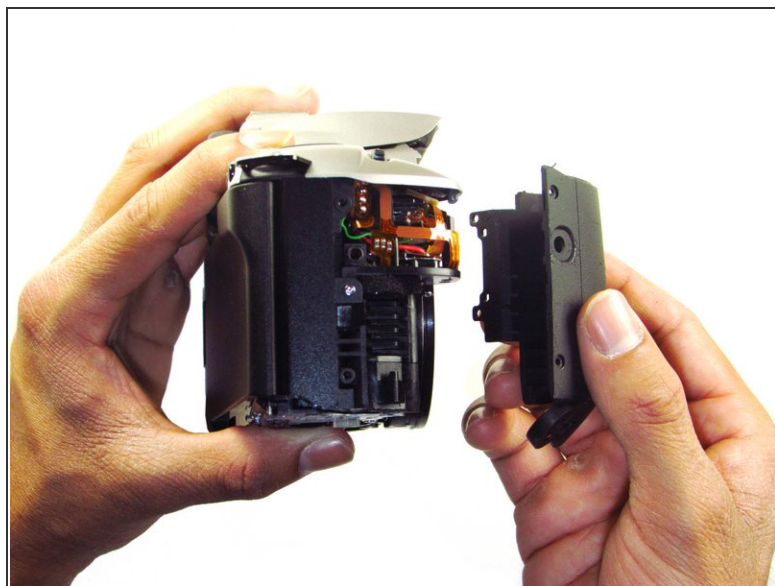


## Step 13



- Remove two black 4.8mm Phillips #1 screws on the front of the camera.

## Step 14



- Pry open the side grip using a spudger.

## Step 15 — Eyecup



- With your hands, remove the rubber grip from the eye piece.

## Step 16



- Remove the eyecup from the eyepiece by pushing the eyecup up.

## Step 17 — Top Panel



- Remove two silver 5.0mm Phillips #1 screws.

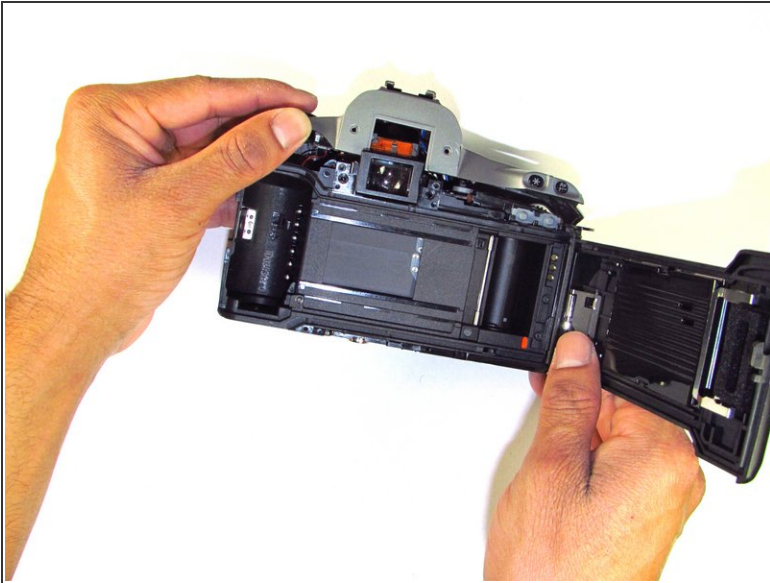
## Step 18



- Remove the silver 5.5mm Phillips #1 screw.



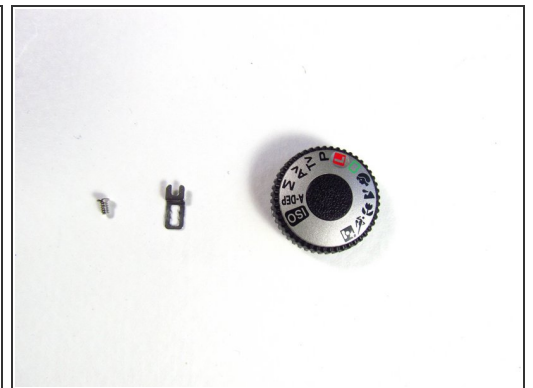
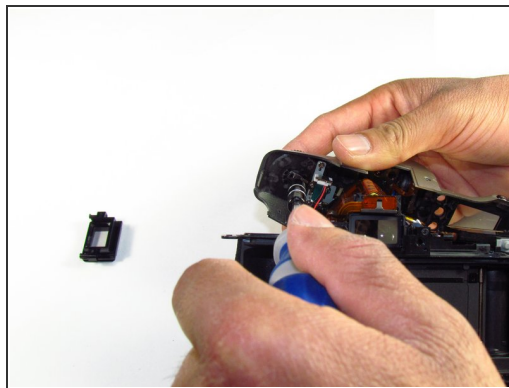
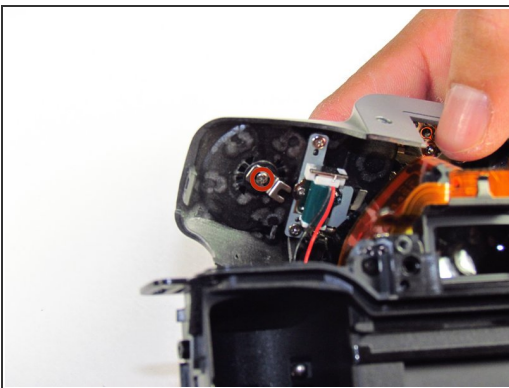
## Step 19



- Pry the top silver part of the camera off.

⚠ Buttons may slip out of the camera's top as the top is pulled off the camera (shown in picture two).

## Step 20 — Command Dial



- On the top panel, remove the silver 3.8mm Phillips #1 screw right below the command dial.

⚠ A small metal piece will come off with the screw.

To reassemble your device, follow these instructions in reverse order.