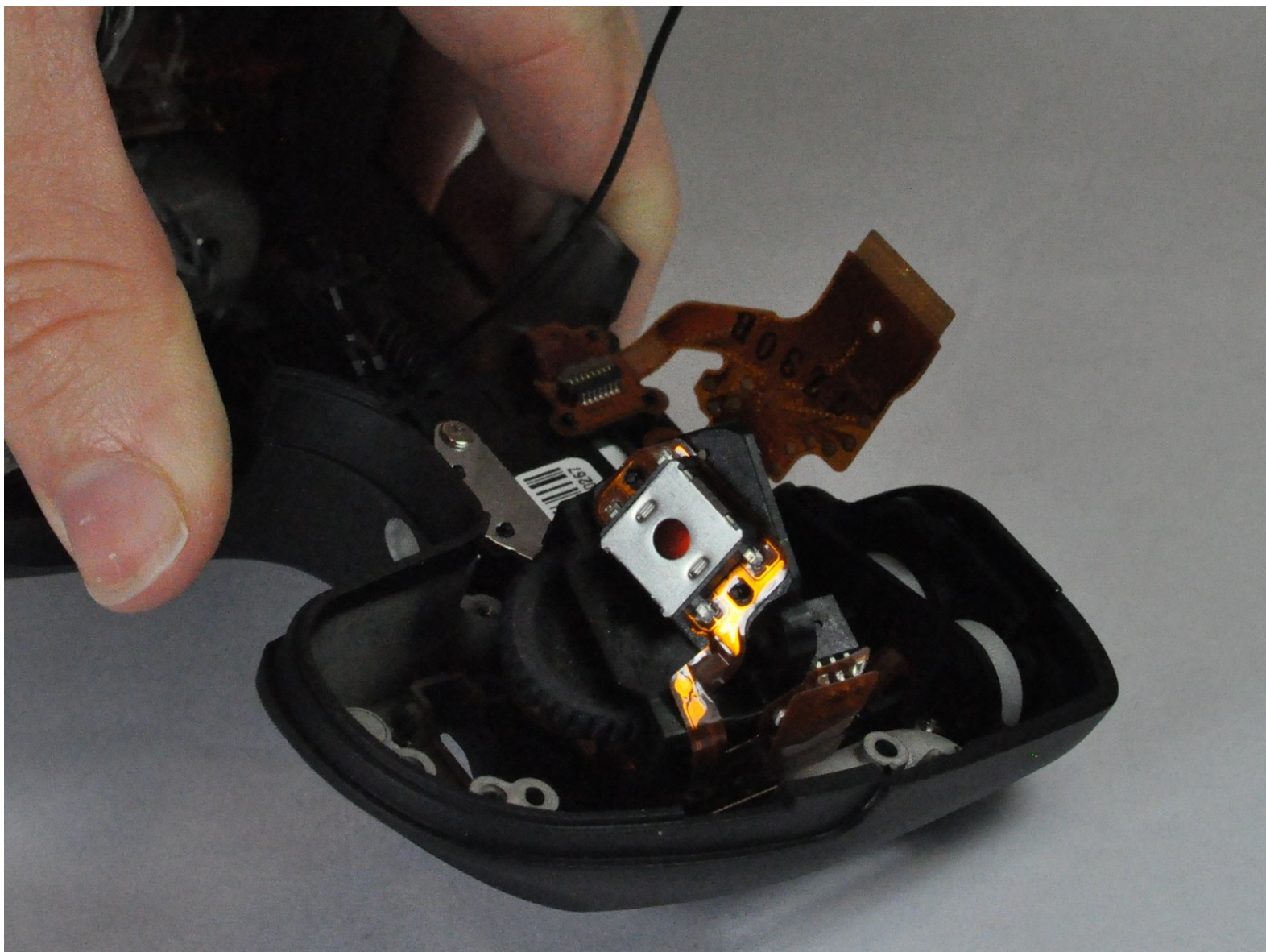




Canon EOS 40D Shutter Button Replacement

How to replace the shutter button if it is sticking or not working properly on the Canon EOS 40D.

Written By: Kenadie Buccellato



INTRODUCTION

For this replacement, the front, back and top covering of the camera must be removed to get to the shutter button. Necessary tools for this replacement include a philips J000 screwdriver, a plastic opening tool, and a pair of precision tweezers. This replacement is moderately to highly involved and should be allotted at least one hour.



TOOLS:

- [iFixit Opening Tools](#) (1)
- [Phillips #000 Screwdriver](#) (1)
- [Tweezers](#) (1)

Step 1 — Battery



- Locate the battery compartment cover on the bottom of the camera below the shutter button.

Step 2



- Find the marked arrow on the battery compartment cover labeled "BATT. OPEN". Slide the lever following the arrow's direction and lift at the same time to release the latch.

Step 3



- Release the lever and allow the battery compartment cover to completely open.
- Remove the battery.

Step 4 — Shutter Button



- Peel off grip material from the body of the camera exposing screws.

Step 5



- Remove the rubber eyepiece by sliding it upwards.

Step 6



- Remove the three 5.0 mm Phillips #000 screws.
- Remove the single 12.0 mm Phillips #000 screw.

Step 7



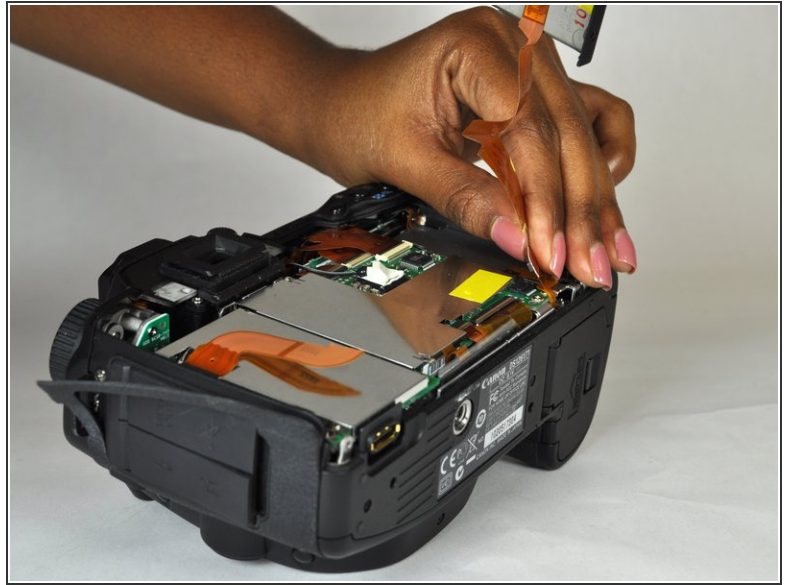
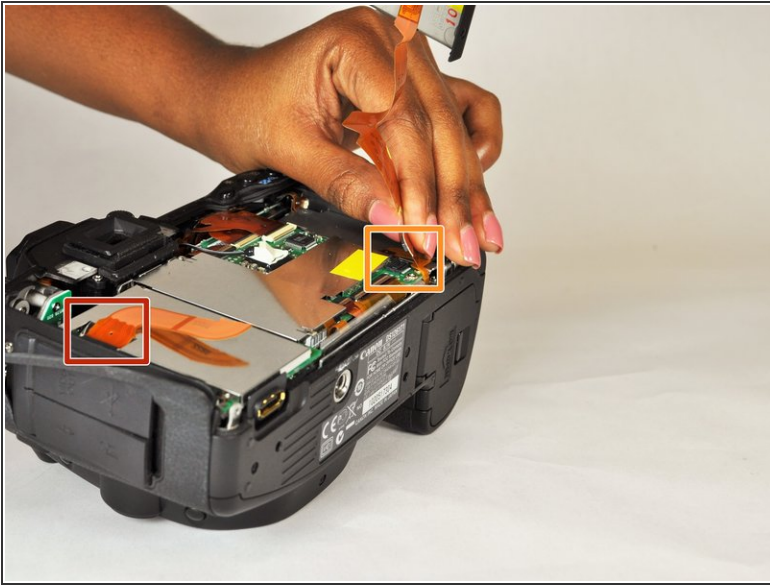
- Remove the two 3.0 mm Phillips #000 screws on the bottom of the camera.

Step 8



- Remove the side cover using a plastic opening tool or your hands.
- Use a plastic opening tool to gently start prying the rear case up from the rest of the camera.

Step 9



- Use the tip of a spudger to disconnect the [ZIF connector](#) on the left side of the camera. The ribbon cable on this device was torn in the process of removing the back case, so there are no photos showing this step.
- Disconnect the ribbon cable securing the rear case to the motherboard.
- Separate the rear case from the camera.

Step 10



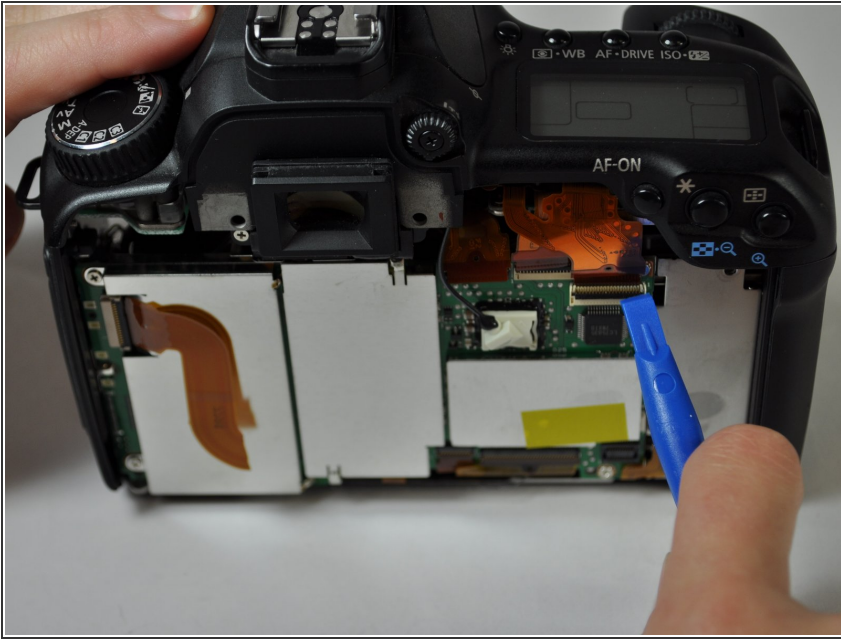
- Remove the five 3.0 mm Phillips #000 screws.
- Remove the two 5.0 mm Phillips #000 screws.
- Remove the single 3.0 mm Phillips #000 screw.
- Remove the two 5.0 mm Phillips #000 screws.

Step 11



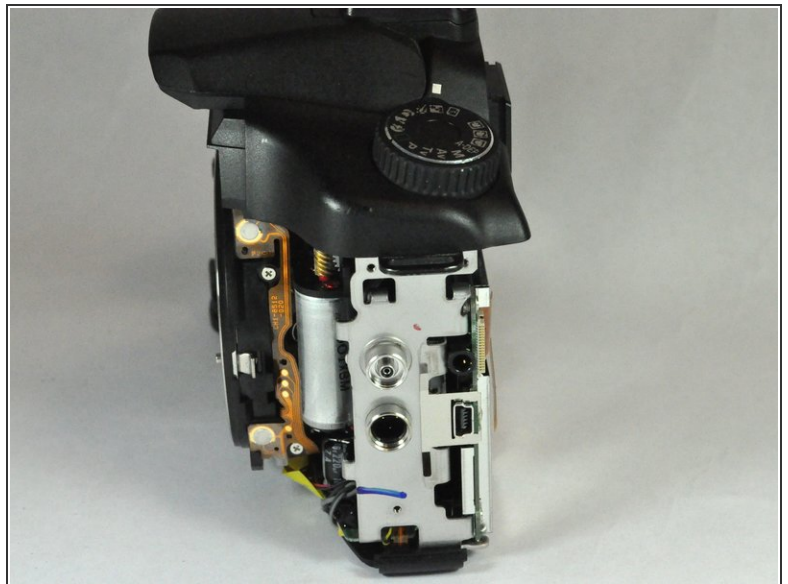
- Pull off the cover.

Step 12



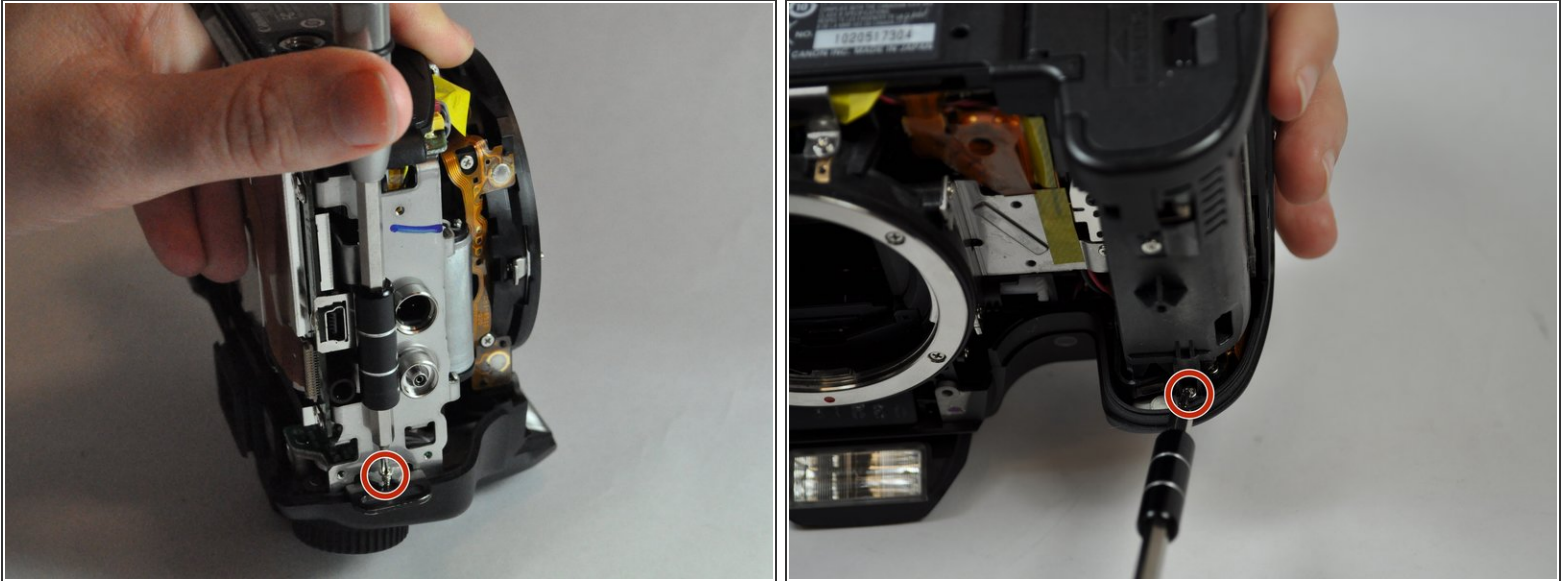
- Use a plastic opening tool to flip up the black retaining flap on the ZIF connector. Pull the ribbon cables free of the connectors.

Step 13



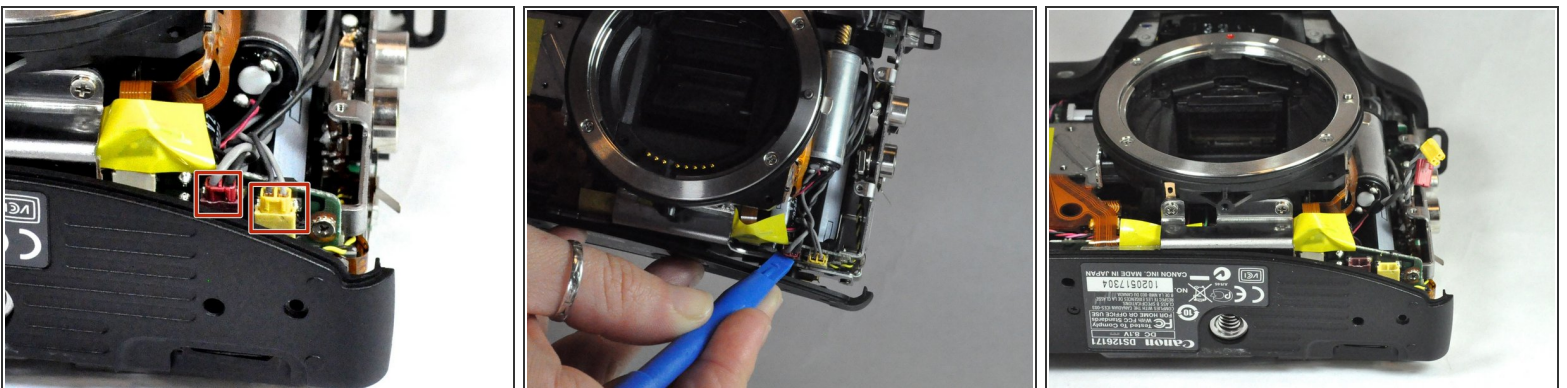
- Remove side panel by unscrewing three 5mm Phillips J000 screws.

Step 14



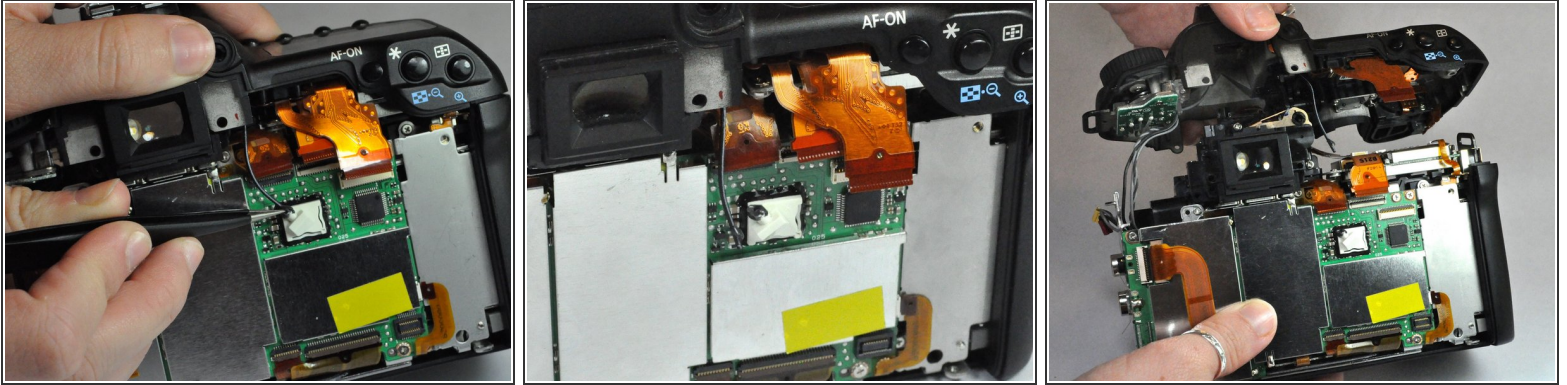
- Using a Phillips J000 screwdriver, remove the 5mm screw from under the wheel and under the shutter button.
- Remove the two 5.0 mm Phillips #000 screws. One is beneath the function wheel, and one is beneath the shutter button.

Step 15



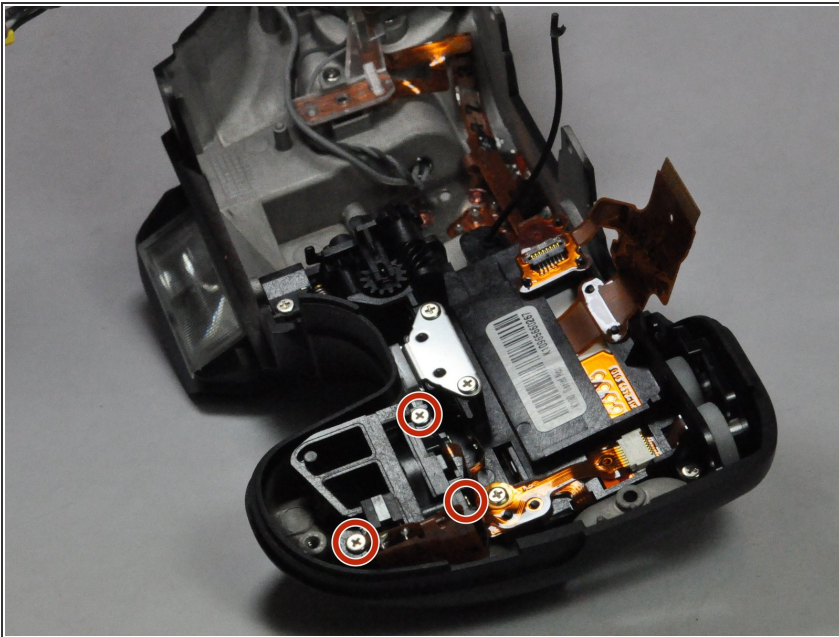
- Remove the red and yellow plugs from their socket using the plastic opening tool.
- Position the tip of the tool under the raised plastic line then push up.

Step 16



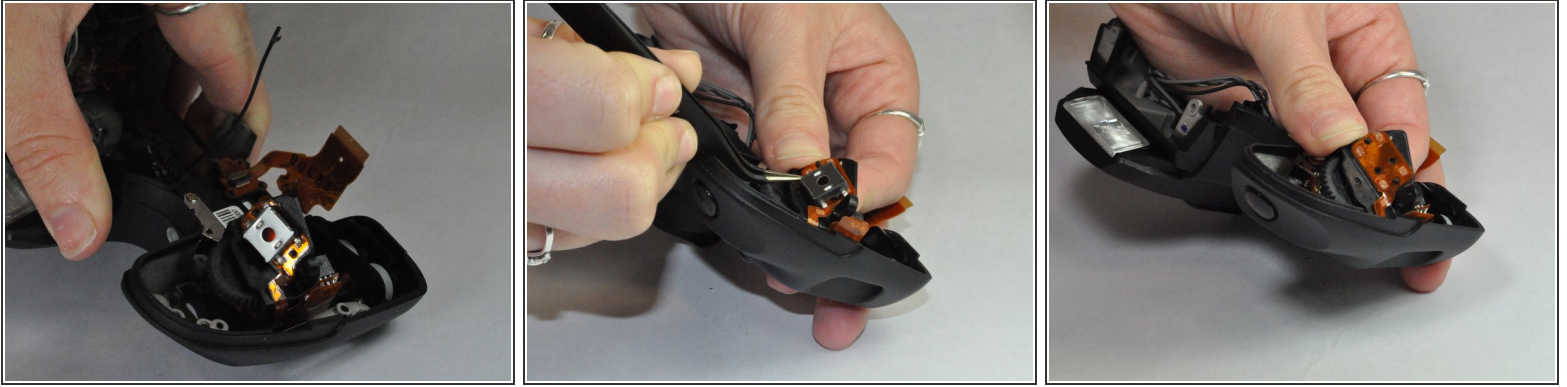
- Remove cable running from the top of the camera to the black and white box.
- Use a pair of precision tweezers to poke through the rubber coating and create a path for the wire to slide out.
- Disconnect the wire by sliding it away from the rubber.

Step 17



- Use a Phillips #000 screwdriver to remove the two 5.0 mm screws and single 7.0 mm screw.
- ⓘ Notice that one is screwed in from the side.

Step 18



- Once the screws are removed, wiggle the piece out of its socket and flip it over, exposing the shutter button.
- Use tweezers to separate the piece from the ribbon that it is glued to.

To reassemble your device, follow these instructions in reverse order.