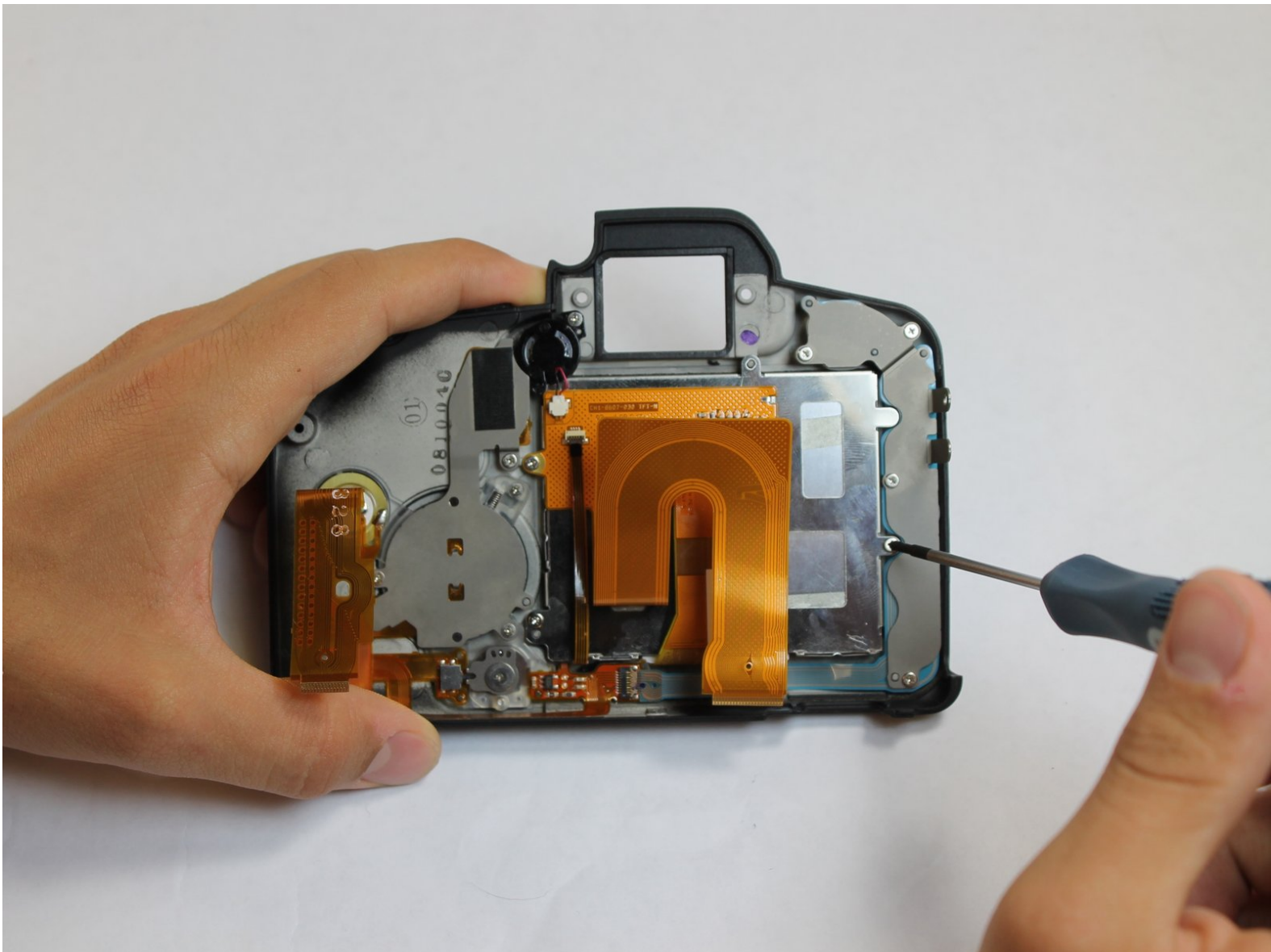




Canon EOS 5D Mark II LCD Replacement

This guide will show users how to replace their broken or cracked LCD.

Written By: Mike Seed



INTRODUCTION

Follow this guide to replace the LCD.



TOOLS:

- [Phillips #0 Screwdriver](#) (1)
-

Step 1 — Clock Battery



- Lift the rubber flap covering the input/output jacks.


Step 2




- Using a Phillips #0, remove the single 3.4 mm screw.

Step 3



 This step will permanently erase all user settings.

- The memory battery can now be easily slid out of place.
-  If you are following this guide in an effort to perform a hard reset, you should now press the shutter button multiple times in order to drain any left over power, then replace the batteries and power the device back on. You have just performed a hard reset!

Step 4 — Back Panel



- Peel back the rubber cover above the in/out ports to reveal two screw heads.

Step 5



- Remove both 5.4 mm screws using a Phillips #0.

Step 6



- Lift the in/out port plastic covering from the bottom where the backup battery used to be.

Step 7



- Remove each 6.3 mm screw on either side of the viewfinder using a Phillips #0 screwdriver.

Step 8



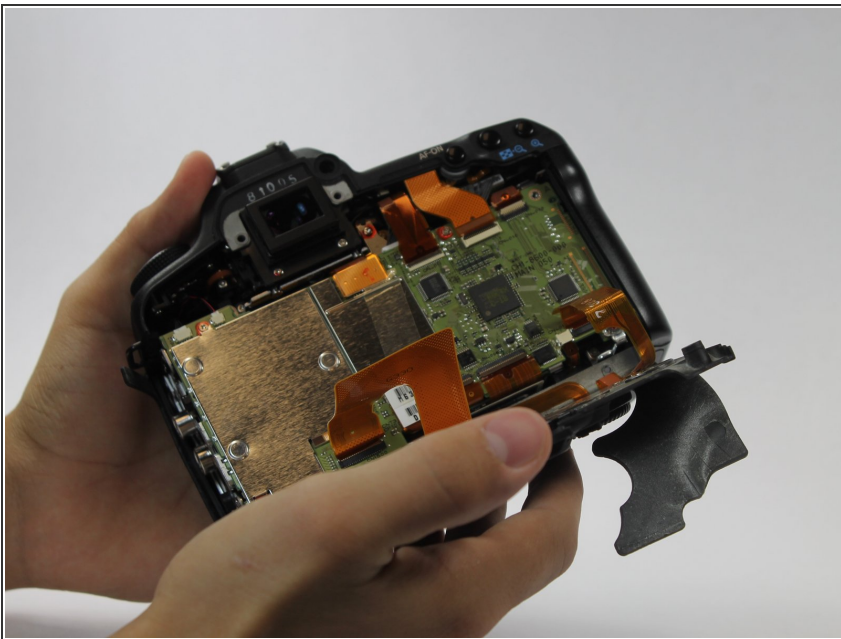
- Remove the three 4.8 mm screws on the bottom of the back plate using a Phillips #0.

Step 9



- Peel back the rubber covering next to the menu dial to access the screw.
- Remove the single 3.4 mm screw using a Phillips #0.

Step 10



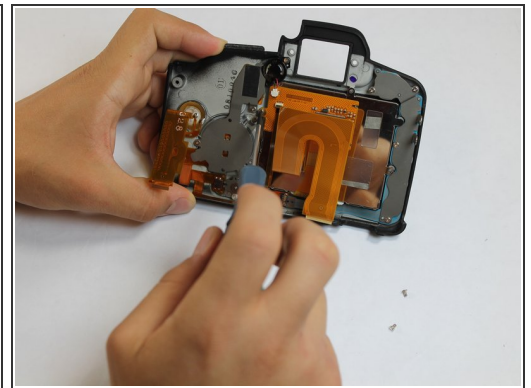
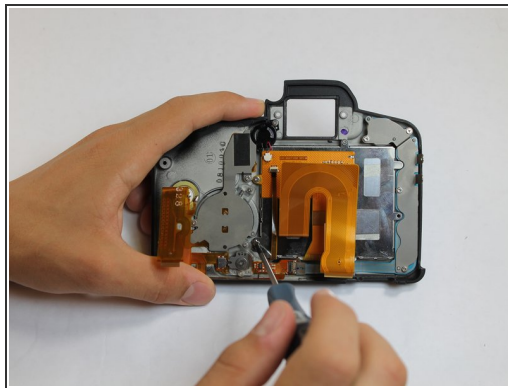
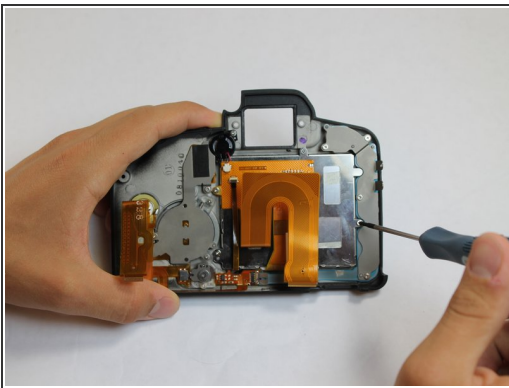
- The back panel can now fall off easily by turning the device upside down. Be sure to catch it so the data ribbons do not tear or tug.

Step 11



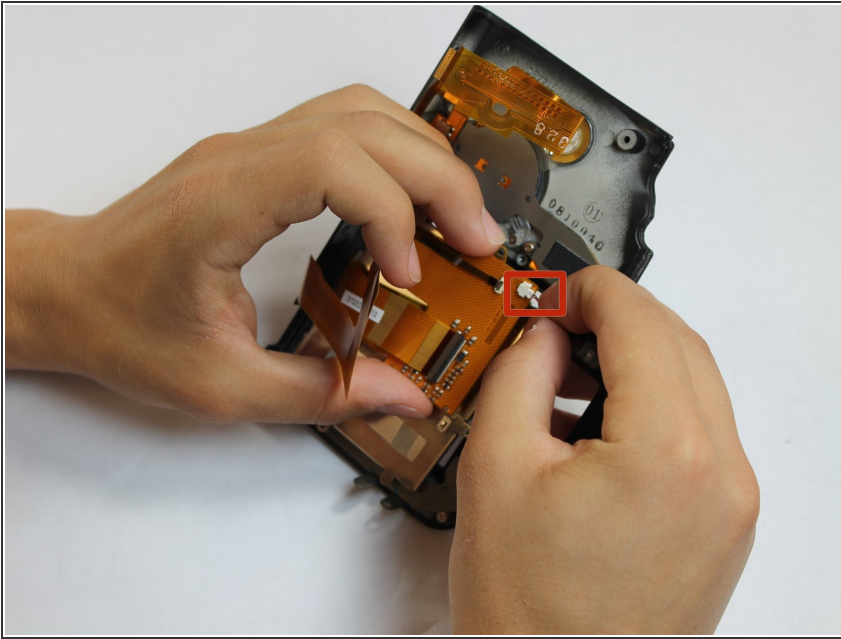
- Remove each data ribbon cable from the motherboard by applying pressure down towards the motherboard and gently sliding your thumb upwards on the slot where the cable meets the motherboard. This will raise a very small clip that locks the cable in place.
- The back panel is now free from the rest of the device.

Step 12 — LCD



- Remove each of the 3.4 mm screws holding in the LCD using a Phillips #0.

Step 13



- Grip the wire attaching the speaker to the data ribbon cable and pull it out.
- The LCD is now free from the back panel.

To reassemble your device, follow these instructions in reverse order.