



Canon EOS 6D Rear Body Panel Replacement

Replace the rear body paneling of the EOS 6D.

Written By: Justin Thomas



INTRODUCTION

Use this guide to replace the rear body panel of your EOS 6D or to access damaged internal components.



TOOLS:

- [Phillips #00 Screwdriver](#) (1)
 - [Spudger](#) (1)
-

Step 1 — Rear Body Panel



- Remove the viewfinder cover by pinching the sides and sliding it upward.

Step 2



- Open the battery door on the bottom of the camera.
- Use your thumb to slide the small black tab on the inside of the battery door up and pull the door off the camera.

Step 3



- Slide your fingernail or the flat end of the spudger underneath the rubber covering and gently peel it off all sides of the camera.

Step 4



- Open the covers to the HDMI/AV/MIC ports on the side of the camera by gently pulling outward on the bottom of the covers.
- Rotate the covers to the side so that you can see the connection ports inside.
- Remove the following screws:
 - Two silver 5mm Phillips #00
 - One black 6mm Phillips #00

Step 5



- Remove the cover to the HDMI/AV/MIC ports by gently lifting the tab on the bottom edge of the camera.

Step 6



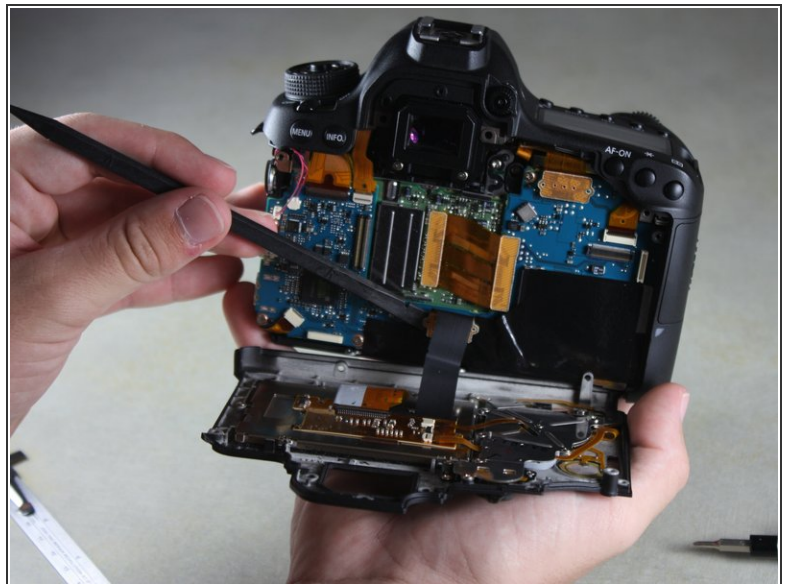
- Rotate your camera so the bottom side is facing you.
- Remove the following screws:
 - One 6mm Phillips #00
 - Two 3mm Phillips #00


Step 7



- Rotate your camera so the back is facing you.
- Remove the following screws:
 - Three silver 5mm Phillips #00
 - Two black 6mm Phillips #00
 - One black 4mm Phillips #00

Step 8



 A black ribbon wire connects the rear panel to the inside of the camera. Breaking this wire would make your rear screen and buttons non-functional.

- Carefully use your fingers to tilt the back panel downward to about a 90 degree angle.
- Use the flat end of the spudger to gently pry off the ribbon wire from the inside of the camera.

This document was generated on 2020-02-28 01:25:41 AM (MST).

To reassemble your device, follow these instructions in reverse order.