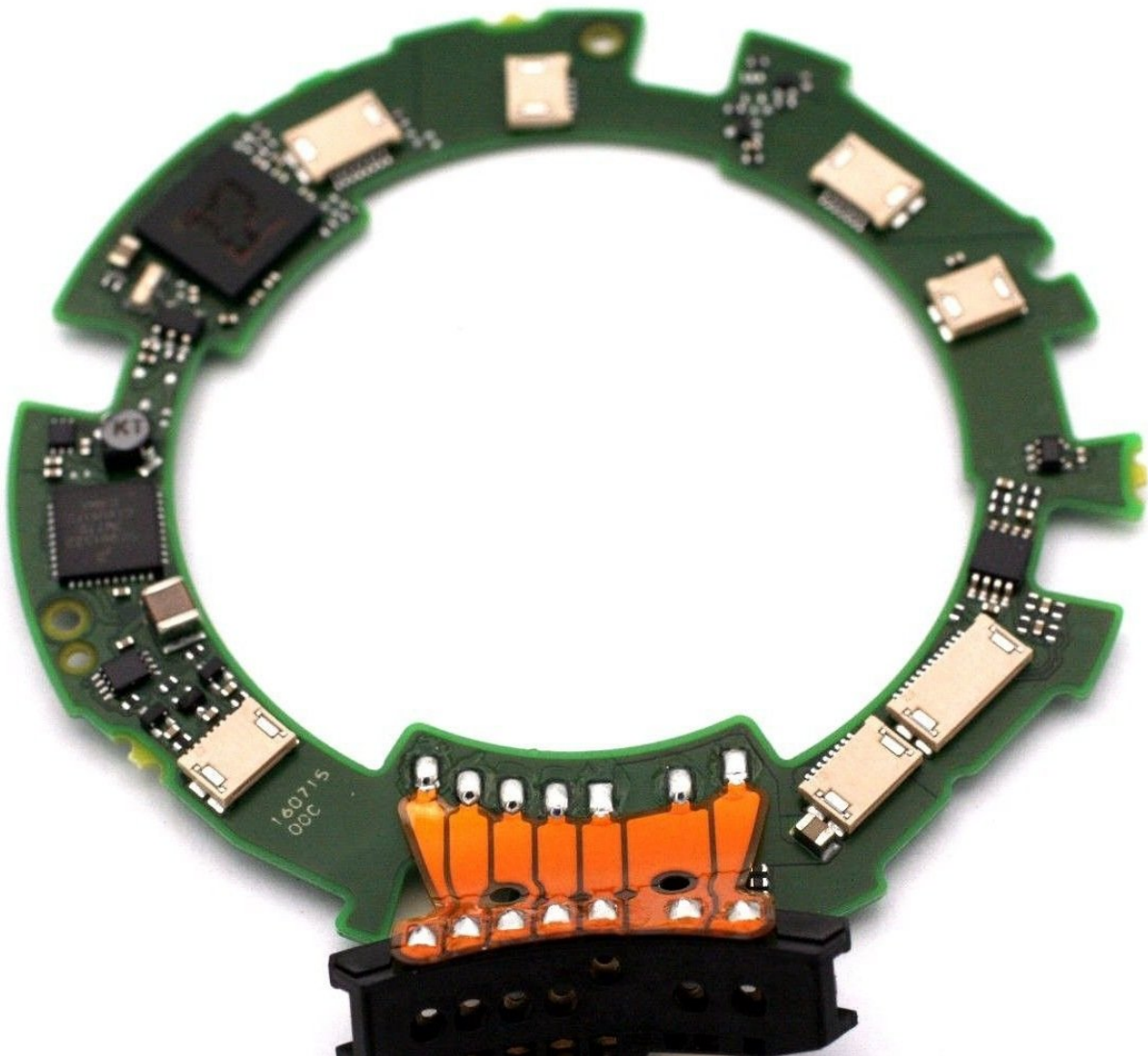




Canon EOS 70D EFS 18-135mm Lens Main Board Replacement

The main board in the EFS 18-135mm lens is responsible for relaying all the focus commands, both manually and automatic, to the rest of the camera.

Written By: Paul



INTRODUCTION

In this guide, you will learn how to replace the main board in the EFS 18-135mm lens. The main board is crucial to the correct operation of the lens, passing focus commands from the camera to the lens.



TOOLS:

- [Phillips #000 Screwdriver](#) (1)
 - [Spudger](#) (1)
-

Step 1 — EFS 18-135mm Lens Main Board



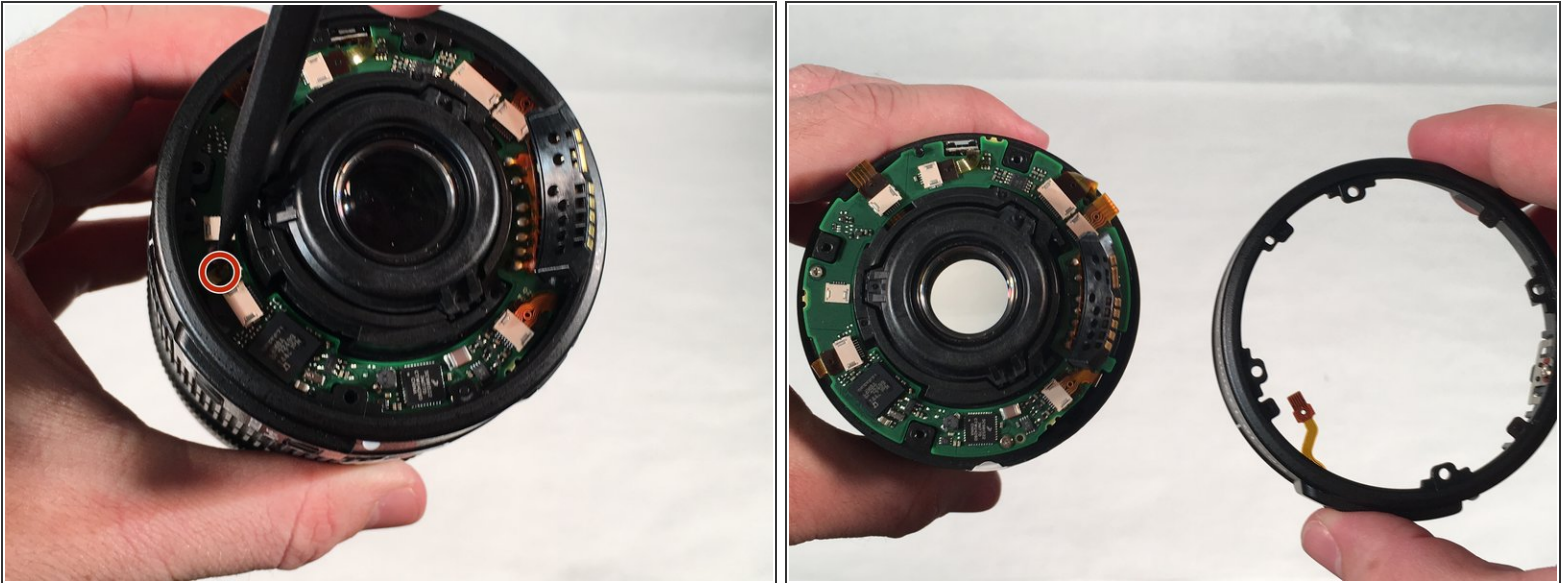
- First, detach the lens by pressing and holding the release button highlighted in the picture.
- Next, grab the lens and rotate it counter-clockwise when looking at the camera.
- Finally, when the camera stops rotating, pull the lens away from the camera.

Step 2



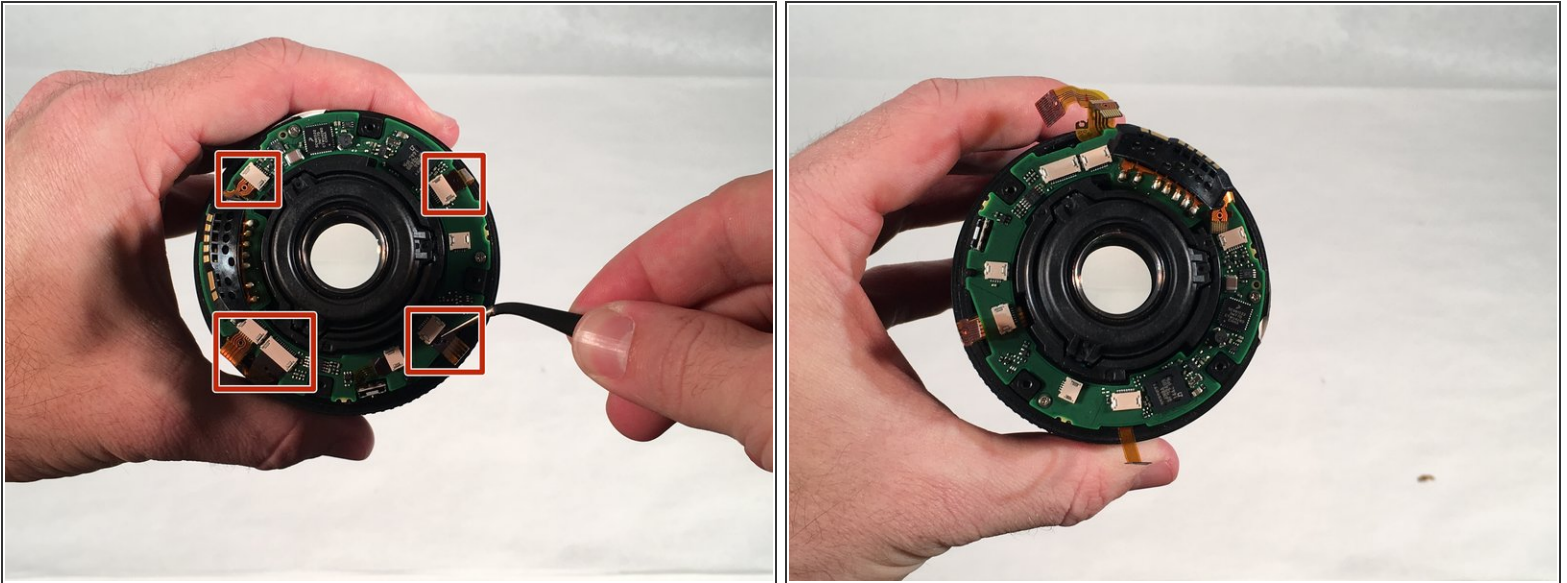
- Remove the four 5.5-mm Phillips #000 screws for the lens mount ring (silver ring).
- Remove the two 4-mm Phillips #000 screws mounting the main board connector.
- ⓘ This guide involves removing a lot of very small screws so be sure to have a magnet board to keep track of them.

Step 3



- Using a spudger, pull the connector loose from the barrel switch ring assembly.
- Set barrel switch ring assembly to the side.

Step 4



- Using a spudger, pull the five connectors out of their housing.

⚠ Use very gentle pressure when pulling connectors out of the lens main board, as they tend to break easily.

Step 5



- Remove the two 4-mm Phillips #000 main board mounting screws.
- Remove the main board from the lens with your hand.
- The main board is now successfully removed from the lens.

To reassemble your device, follow these instructions in reverse order.