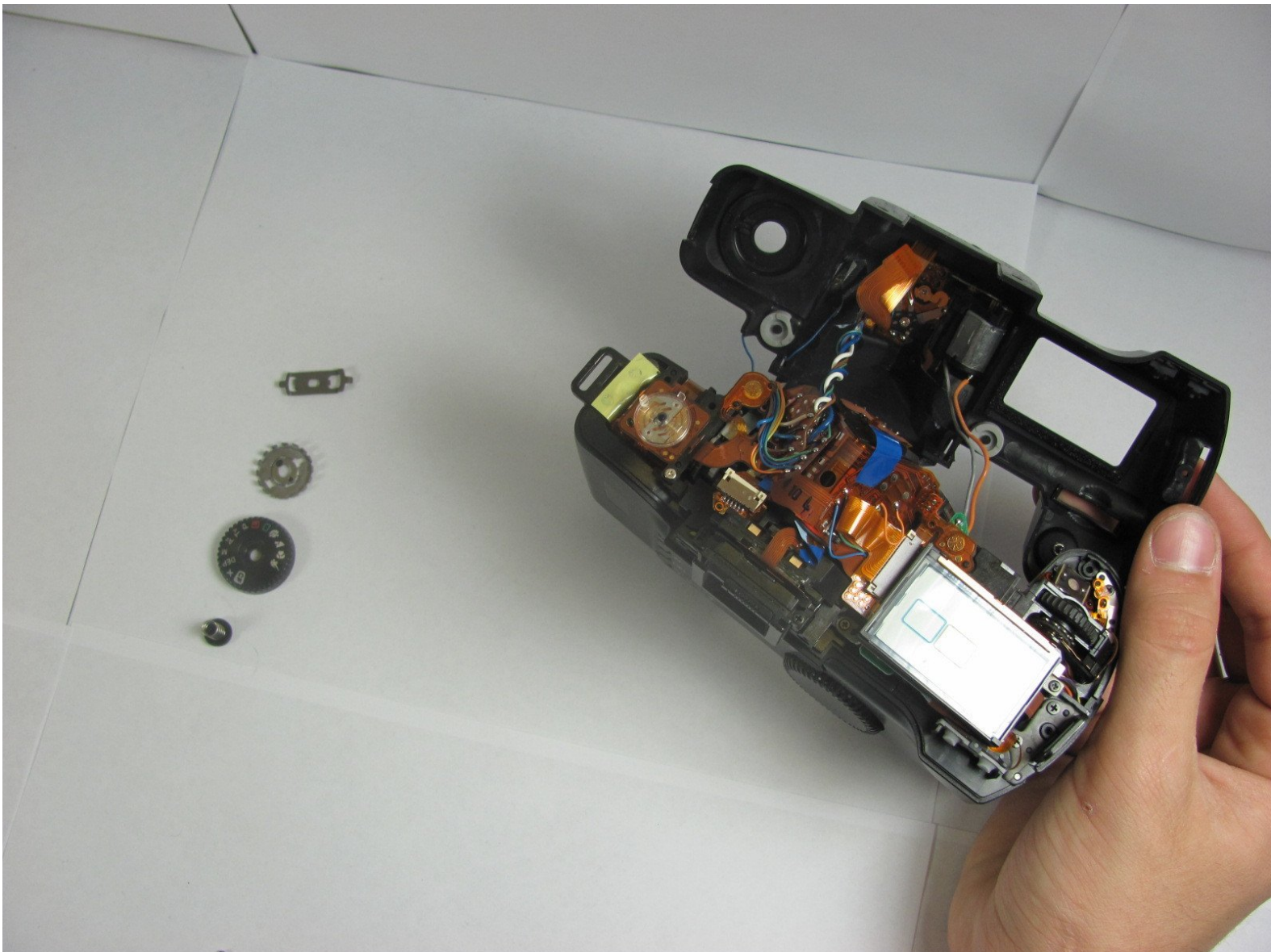




Canon EOS A2 Control Dial Replacement

This guide will instruct you on how to remove the control dial on the Canon EOS A2.

Written By: Jessica



INTRODUCTION

The control dial on the canon EOS A2 lies underneath the top cover of the device. The front cover must also be removed in order to access this.

TOOLS:

- [Phillips #00 Screwdriver](#) (1)
 - [iFixit Opening Tools](#) (1)
-

Step 1 — Battery



- Locate the battery door/camera grip on the left side of the camera and lift the rotating removal tab.

Step 2



- Twist the tab clockwise to unlock the door, then pull outward from the camera to remove it.

Step 3



- Remove the battery from inside the battery housing and set the cover aside.

Step 4 — Front Cover



- Remove the two 6.4mm screws above the lens aperture using a phillips #00 screw driver.

Step 5



- Remove the 6.4mm screw from the inside of the flash bezel.
- ⓘ If the flash is locked down, insert the battery, then with the help of a pencil [turn the rotary](#) (CW or CCW) switch until the "125" is displayed in the LCD. Press the Flash symbol button. You should hear the latch from the flash, then you can manually lift the flash. If OK, then remove the battery from the camera

Step 6



- Flip the camera upside down and remove the 5.4mm screw below the lens bezel on the front of the camera.

Step 7



- Remove the 5.6mm screws behind the battery cover.

Step 8



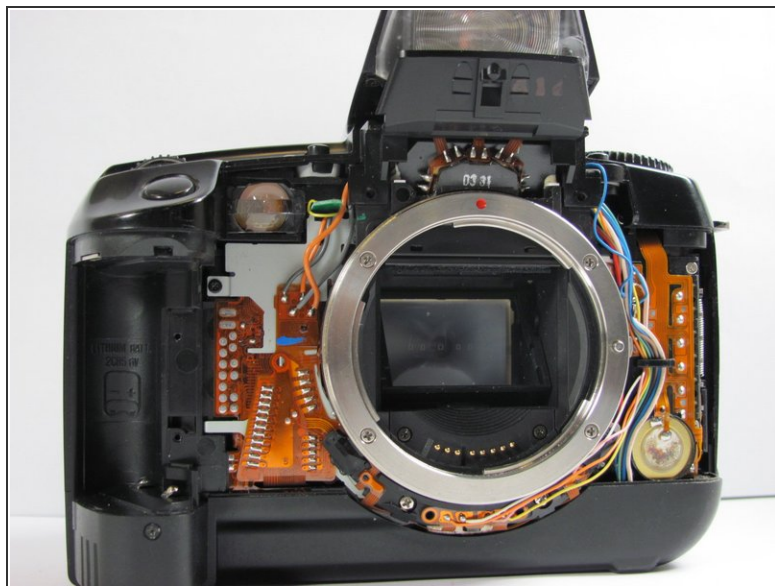
- Remove two 6.4mm screws on the latch mechanism on the right side of the camera.

Step 9



- Remove the 6.4mm screw on the top of the inside edge of the battery hole.

Step 10



⚠ Starting at the flash, carefully pull the front cover away from the camera.

Step 11 — Top Cover



- Remove the 4.3mm screw below the camera strap ring.

Step 12



- Remove two 4.8mm screws located on both sides of the eyepiece.

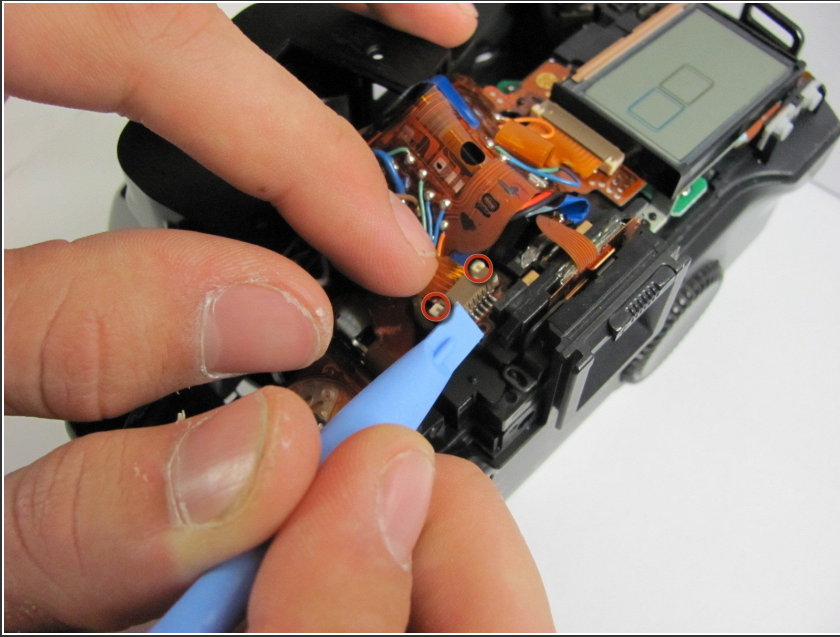
Step 13



- Pull the top cover up slowly.

⚠ A ribbon cable is attached to the bottom of the top cover and the camera. Pull up very carefully to avoid damaging this.

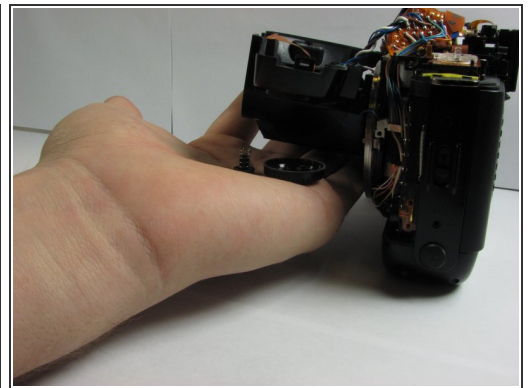
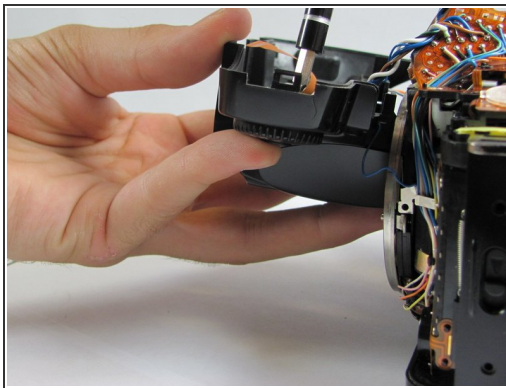
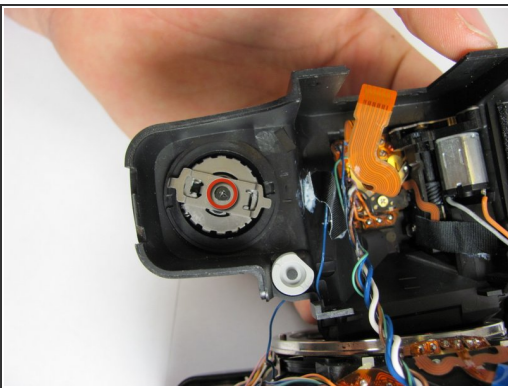
Step 14



- Once you have revealed the ribbon cable, gently let the top cover hang off the front of the camera. Use the plastic opening tool to gently pull the white tabs on the ribbon cable, releasing the ribbon cable.

ⓘ If you pull the white tabs all the way out, just insert them back in to avoid losing them.

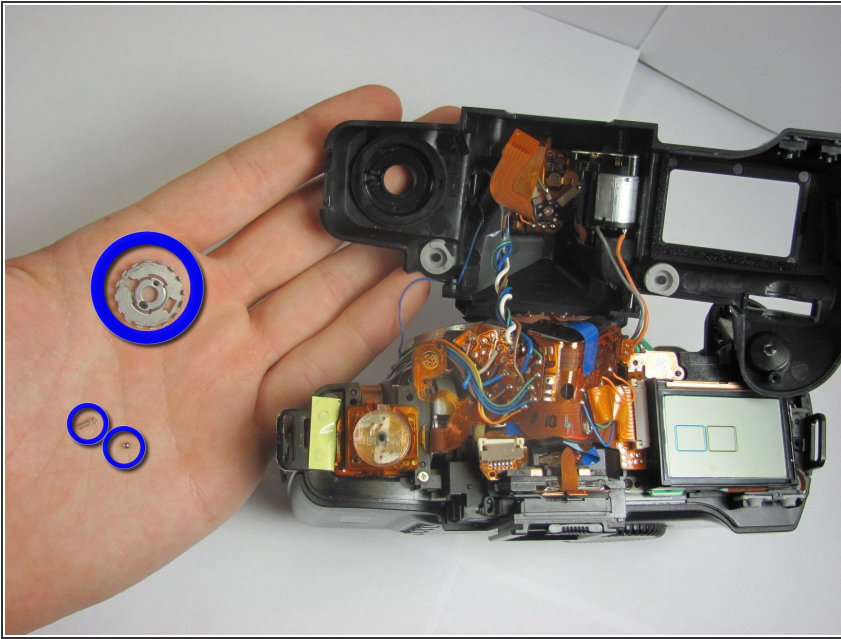
Step 15 — Control Dial



- Remove the 3mm screw from the back of the control dial while holding the front of the control dial.

⚠ Be ready to catch the control dial, button, and spring that will fall out with your hand.

Step 16



- On the bottom side of the top bezel, remove the ring, detent ball and spring. Your control dial is now ready to be replaced with a working unit.

To reassemble your device, follow these instructions in reverse order.