



# Canon EOS A2 Front Cover Replacement

Removing front cover to give access to lens housing.

Written By: Mark



---

## INTRODUCTION

Removing the front cover gives access to lens housing, and allows removal of the top cover.

---



### TOOLS:

- [Phillips #00 Screwdriver](#) (1)
-

## Step 1 — Battery



- Locate the battery door/camera grip on the left side of the camera and lift the rotating removal tab.

## Step 2



- Twist the tab clockwise to unlock the door, then pull outward from the camera to remove it.



### Step 3



- Remove the battery from inside the battery housing and set the cover aside.

### Step 4 — Front Cover



- Remove the two 6.4mm screws above the lens aperture using a phillips #00 screw driver.

## Step 5



- Remove the 6.4mm screw from the inside of the flash bezel.
- ⓘ If the flash is locked down, insert the battery, then with the help of a pencil [turn the rotary](#) (CW or CCW) switch until the "125" is displayed in the LCD. Press the Flash symbol button. You should hear the latch from the flash, then you can manually lift the flash. If OK, then remove the battery from the camera

## Step 6



- Flip the camera upside down and remove the 5.4mm screw below the lens bezel on the front of the camera.

## Step 7



- Remove the 5.6mm screws behind the battery cover.

## Step 8



- Remove two 6.4mm screws on the latch mechanism on the right side of the camera.

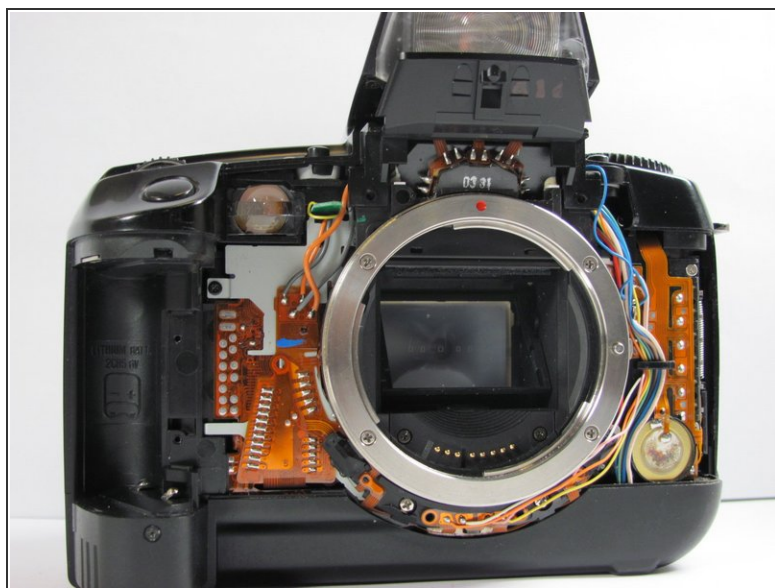


## Step 9



- Remove the 6.4mm screw on the top of the inside edge of the battery hole.

## Step 10



⚠ Starting at the flash, carefully pull the front cover away from the camera.

To reassemble your device, follow these instructions in reverse order.