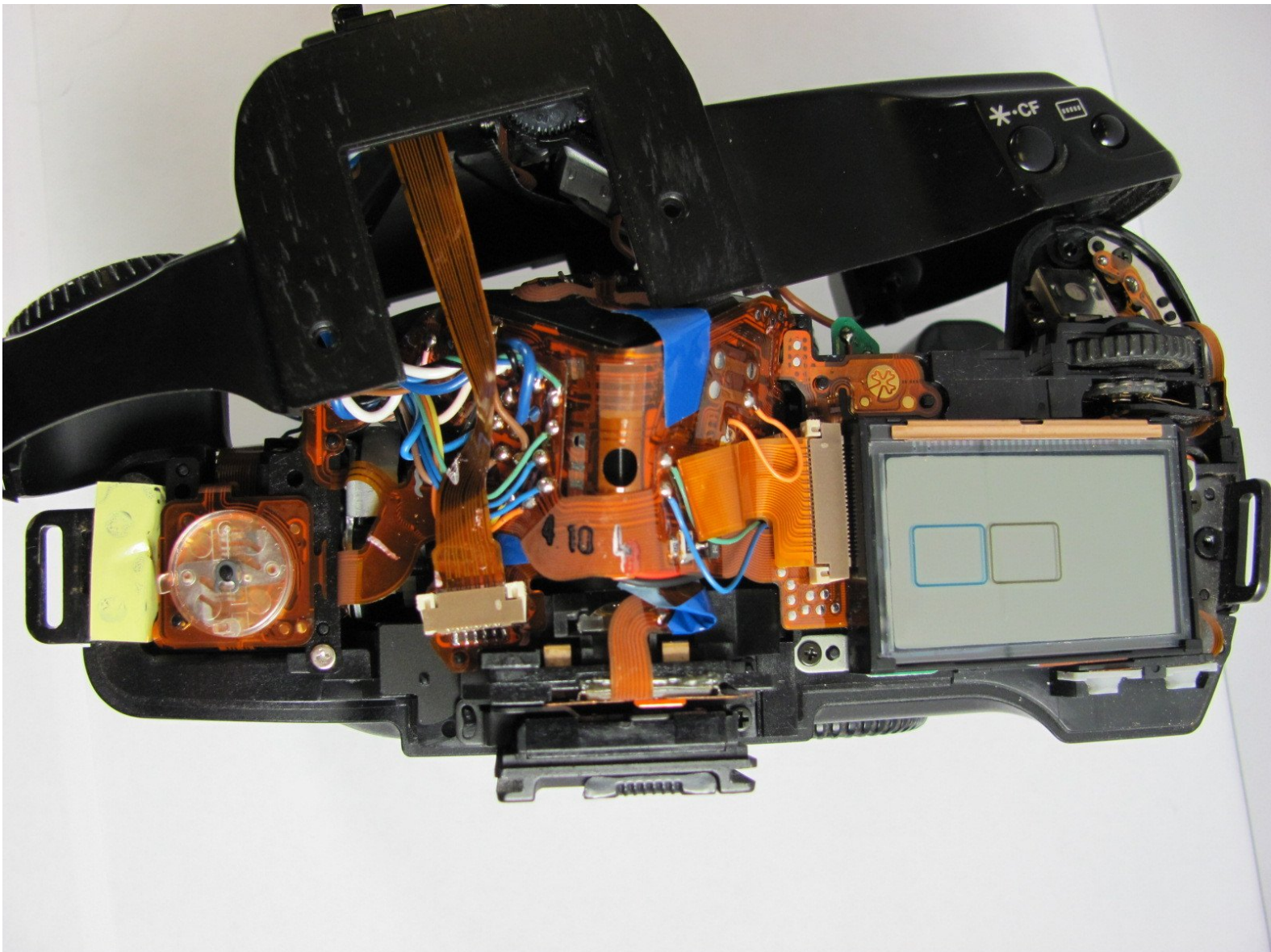




Canon EOS A2 Top Cover Replacement

Removing top cover of camera to give access to LCD screen, control dial, and flash.

Written By: Mark



INTRODUCTION

Removing the top cover of camera gives access to the LCD screen, control dial, and flash.



TOOLS:

- [Phillips #00 Screwdriver](#) (1)
 - [iFixit Opening Tools](#) (1)
-

Step 1 — Battery



- Locate the battery door/camera grip on the left side of the camera and lift the rotating removal tab.

Step 2



- Twist the tab clockwise to unlock the door, then pull outward from the camera to remove it.

Step 3



- Remove the battery from inside the battery housing and set the cover aside.

Step 4 — Front Cover



- Remove the two 6.4mm screws above the lens aperture using a phillips #00 screw driver.

Step 5



- Remove the 6.4mm screw from the inside of the flash bezel.
- ⓘ If the flash is locked down, insert the battery, then with the help of a pencil [turn the rotary](#) (CW or CCW) switch until the "125" is displayed in the LCD. Press the Flash symbol button. You should hear the latch from the flash, then you can manually lift the flash. If OK, then remove the battery from the camera

Step 6



- Flip the camera upside down and remove the 5.4mm screw below the lens bezel on the front of the camera.

Step 7



- Remove the 5.6mm screws behind the battery cover.

Step 8



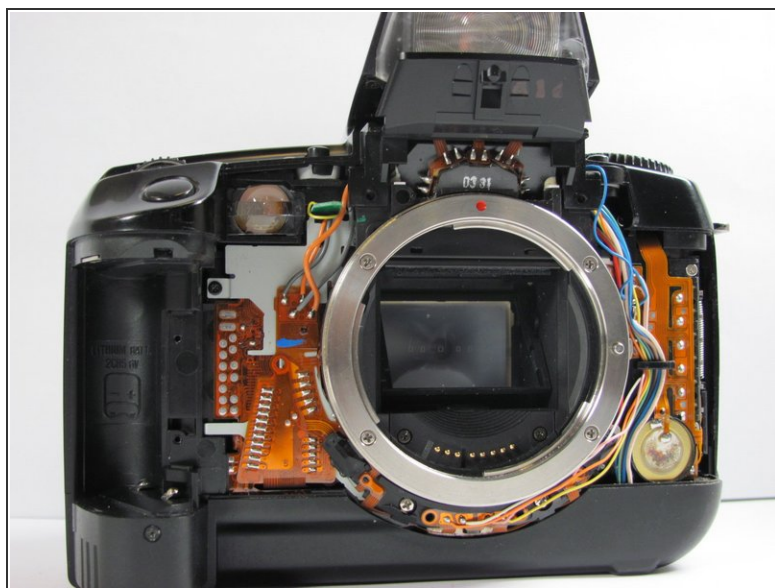
- Remove two 6.4mm screws on the latch mechanism on the right side of the camera.

Step 9



- Remove the 6.4mm screw on the top of the inside edge of the battery hole.

Step 10



⚠ Starting at the flash, carefully pull the front cover away from the camera.

Step 11 — Top Cover



- Remove the 4.3mm screw below the camera strap ring.

Step 12



- Remove two 4.8mm screws located on both sides of the eyepiece.

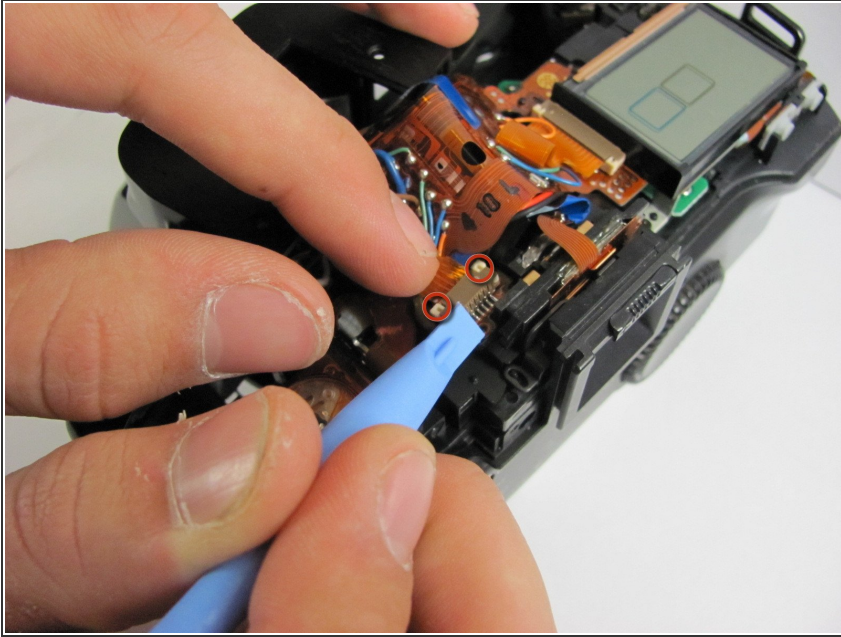
Step 13



- Pull the top cover up slowly.

⚠ A ribbon cable is attached to the bottom of the top cover and the camera. Pull up very carefully to avoid damaging this.

Step 14



- Once you have revealed the ribbon cable, gently let the top cover hang off the front of the camera. Use the plastic opening tool to gently pull the white tabs on the ribbon cable, releasing the ribbon cable.
- ⓘ If you pull the white tabs all the way out, just insert them back in to avoid losing them.

To reassemble your device, follow these instructions in reverse order.