



# Canon EOS Digital Rebel (300D) Back Casing Replacement

This procedure shows the steps needed to remove the back plastic casing from the camera, which is needed to gain access to the camera's main circuit board or replacing certain components such as the LCD screen.

Written By: Claudio Felix



---

## INTRODUCTION

Prior to removing the back casing, it is advisable that you remove the battery and CF card from the camera.



### TOOLS:

- [Phillips #0 Screwdriver](#) (1)
  - [iFixit Opening Tools](#) (1)
-

## Step 1 — Remove the eyecup



- Remove the eyecup by gently pushing it upwards, so it doesn't block us in the final step of pulling the back casing from the camera's body.

## Step 2 — Remove bottom screws



- Remove the three 1/8" philips screws from the bottom of the back casing

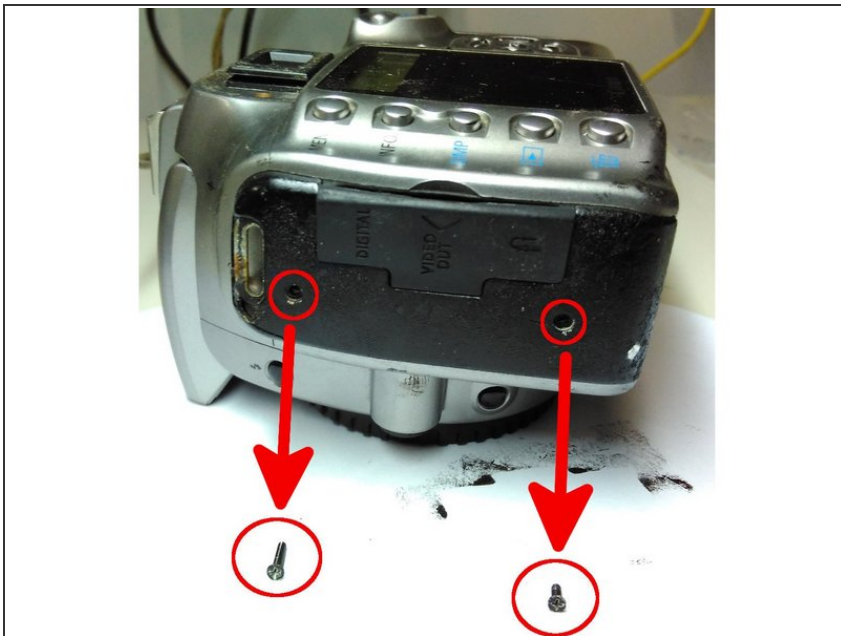


### Step 3 — Remove screws inside CF card compartment



- Open the CF card compartment by moving it upwards and tilting it away from the camera body.
- Remove the two 3/16" philips screws besides the CF card slot opening.

### Step 4 — Remove screws from lateral rubber coating



- Remove the black screws from the camera's left rubber covering - note it is a 5/16" screw at the top and a 3/16" screw at the bottom.

## Step 5 — Remove lateral rubber coating



- Aided by a screwdriver or plastic opening tool, remove the rubber coating from the left side of the camera.

## Step 6 — Remove hidden screw from the back casing



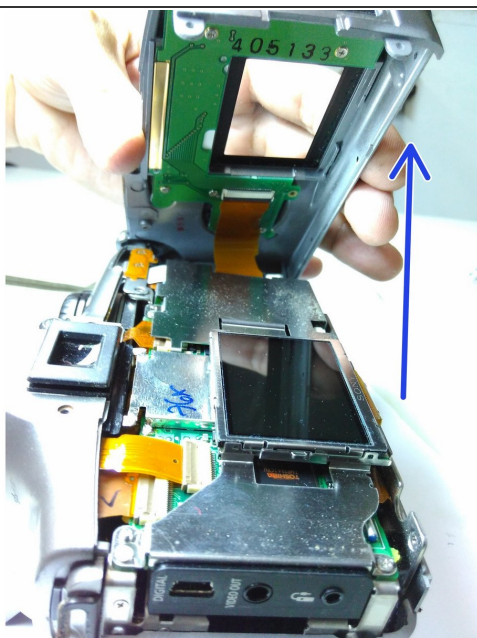
- With a pointy tool, remove the soft cap covering the screw.
- Remove the 3/16" philips screw.

## Step 7 — Detach the back casing from the camera's body



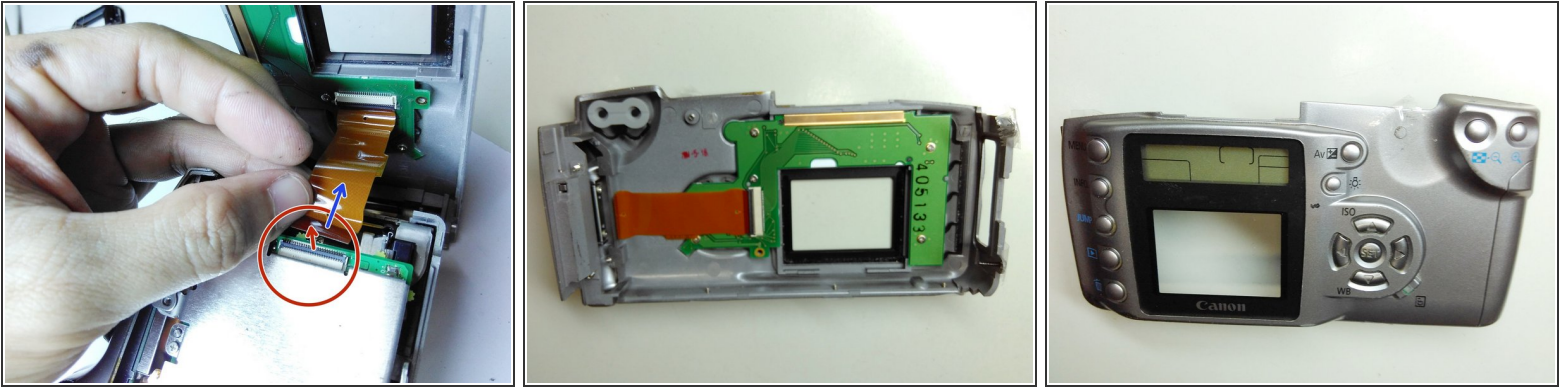
- Use a plastic opening tool to help detaching the back casing from the camera's body.

## Step 8 — Lift back casing from the camera's body



- Carefully lift the back casing from the camera's body from left to right.

## Step 9 — Remove flat cable linking the camera's body to the back casing



- Locate the connector which holds the flat cable to the main circuit board. Unlock the connector by gently pulling up its black piece from the side the flat cable comes into it.
  - Pull the flat cable from the connector and you'll have completely removed the back casing from the camera.
- i** Note I taped each of the screws to their original places on the removed back casing, so I don't loose or mix any of them.

To reassemble your device, follow these instructions in reverse order.