



# Canon EOS Digital Rebel (300D) Front Casing Replacement

Written By: Claudio Felix







## TOOLS:

- [Essential Electronics Toolkit \(1\)](#)
-



## Step 1 — Remove the front screws



- Remove the two 7mm philips screws from the front casing.

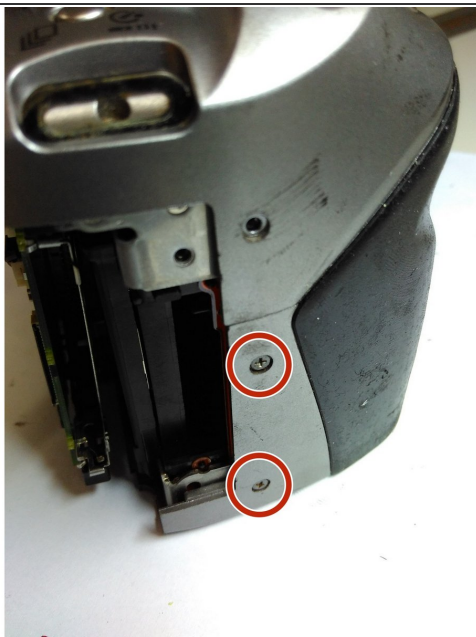
## Step 2 — Remove bottom screws



- Remove the three 1/8" philips screws from the bottom.
- Remove the single 3/16" philips screw from the bottom.

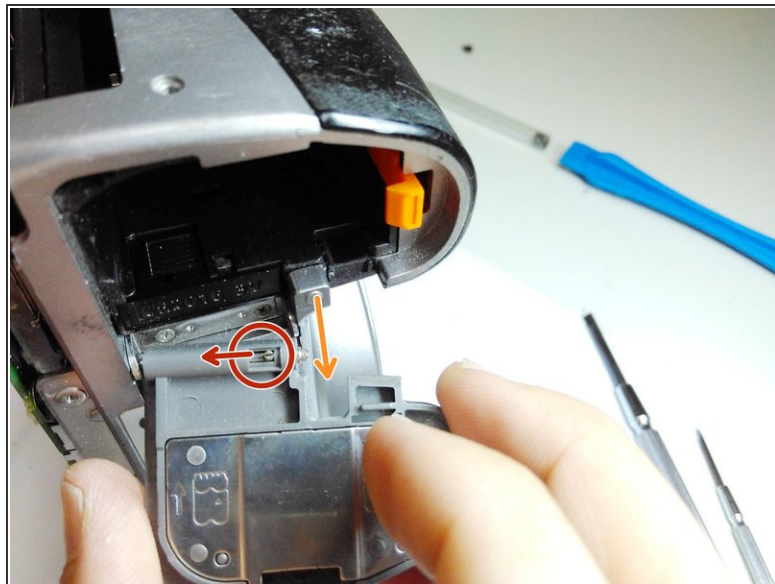


### Step 3 — Remove the right side screws



- Remove the two 1/8" philip screws from the right side of the front casing.

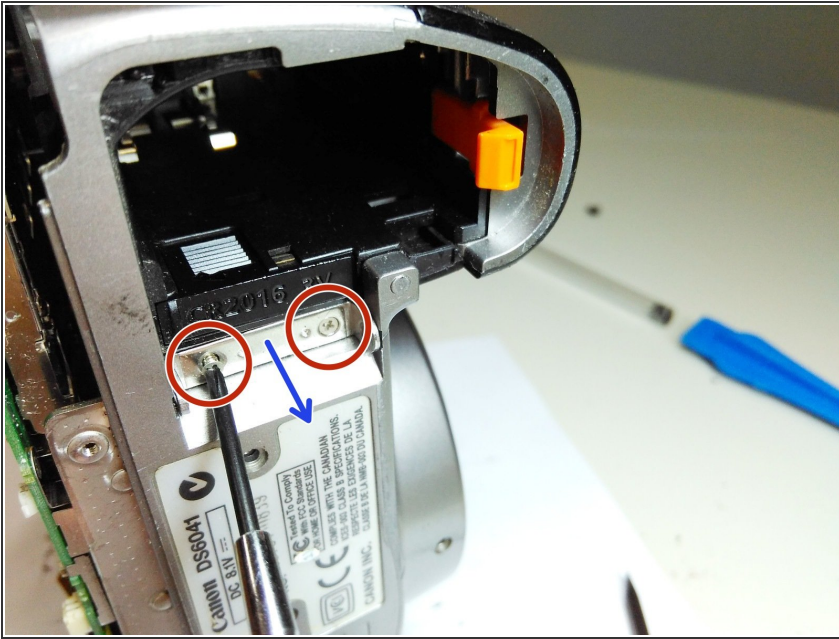
### Step 4 — Remove battery door



- Locate the lock of the battery door and pull it for allowing the door to be removed.
- Remove the battery door.

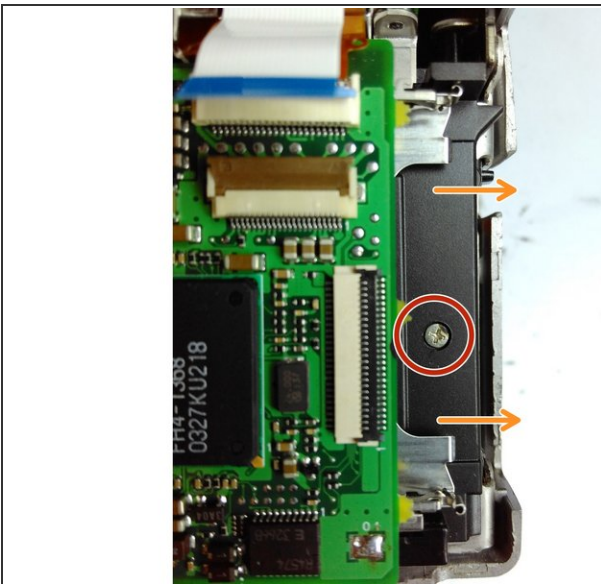


## Step 5 — Remove the battery door hinge mount



- Remove the two 1/8" philips screws from the hinge mount.
- Take out the door hinge mount.

## Step 6 — Remove internal screws



- Remove the screw holding the black cap which covers access holes to the screws holding the front casing to the battery compartment.
- Remove the black cap pulling it to the right.
- Remove the two 3/16" philips screws.

This document was generated on 2019-09-18 12:04:48 PM (MST).



To reassemble your device, follow these instructions in reverse order.