



Canon EOS Rebel G Grip Replacement

Written By: Kyle Reis



INTRODUCTION

This guide shows you how to install the grip on your camera.

TOOLS:

- [Phillips #00 Screwdriver](#) (1)
 - [Spudger](#) (1)
-

Step 1 — Front Panel



- Using a #00 Phillips screw driver, remove three 4.4 mm Phillips screws as indicated by the red circles.

Step 2



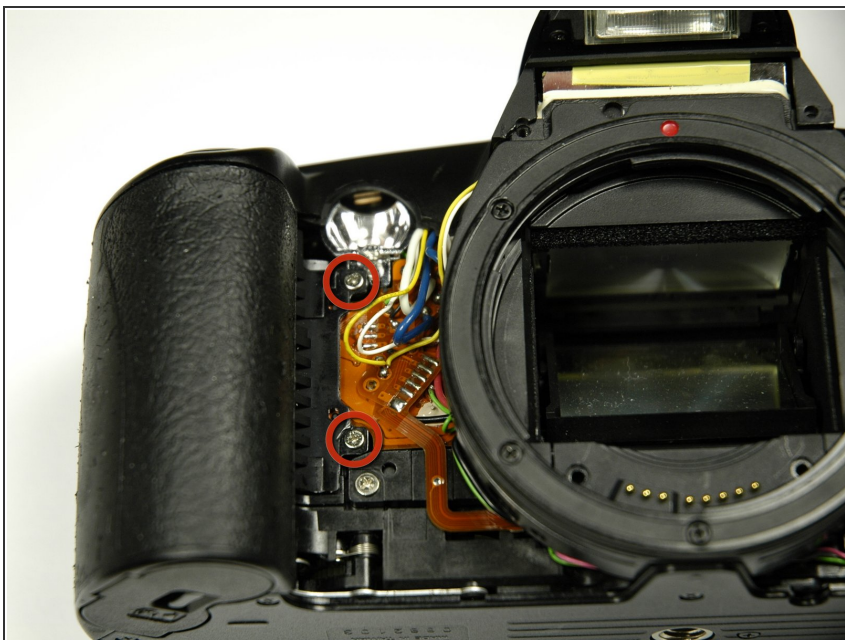
- Using your finger, peel back the textured grip so the components are separated.

Step 3



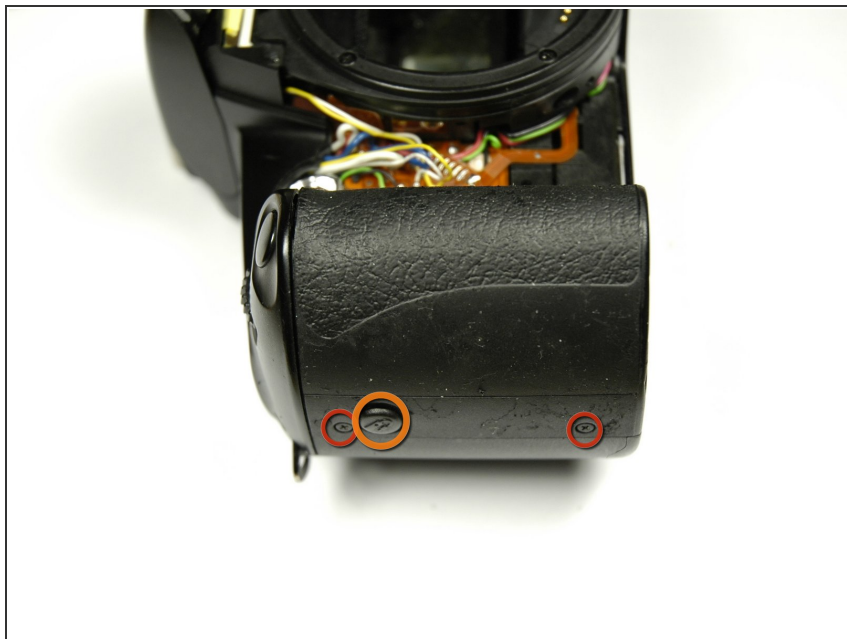
- Using the flat end of a spudger, loosen the connection between the front panel and the device.
- Remove the front panel using your hands.

Step 4 — Grip



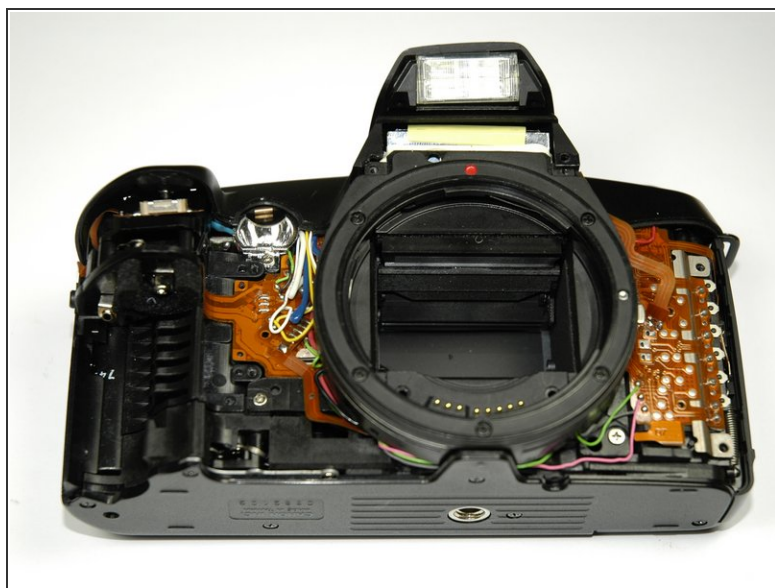
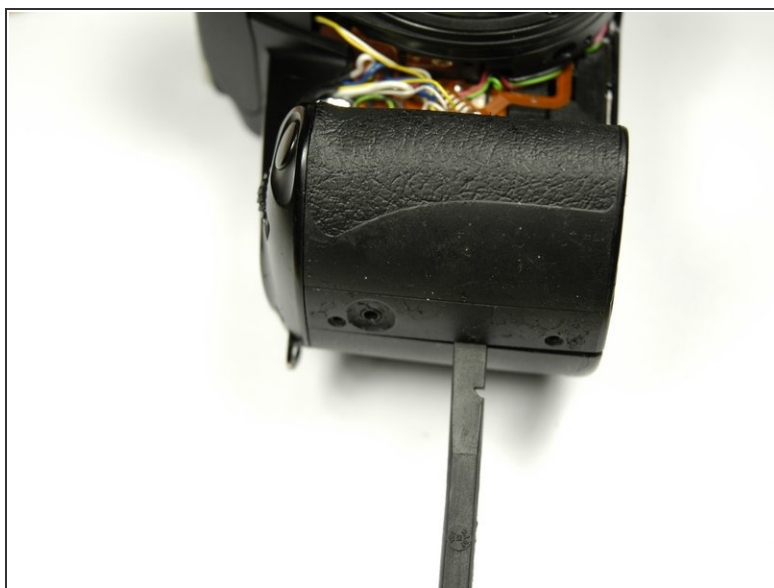
- Using a 00 Phillips screw driver, unscrew the two 4.9 mm Phillips screws. on the inside of the camera.

Step 5



- Using a 00 Phillips screw driver, unscrew the two 4.3 mm Phillips screws on the side of the camera.
- Use your fingers to pull out the plug that is located between the screw holes.

Step 6



- Use the flat end of a spudger to pop the grip off and remove grip.

To reassemble your device, follow these instructions in reverse order.