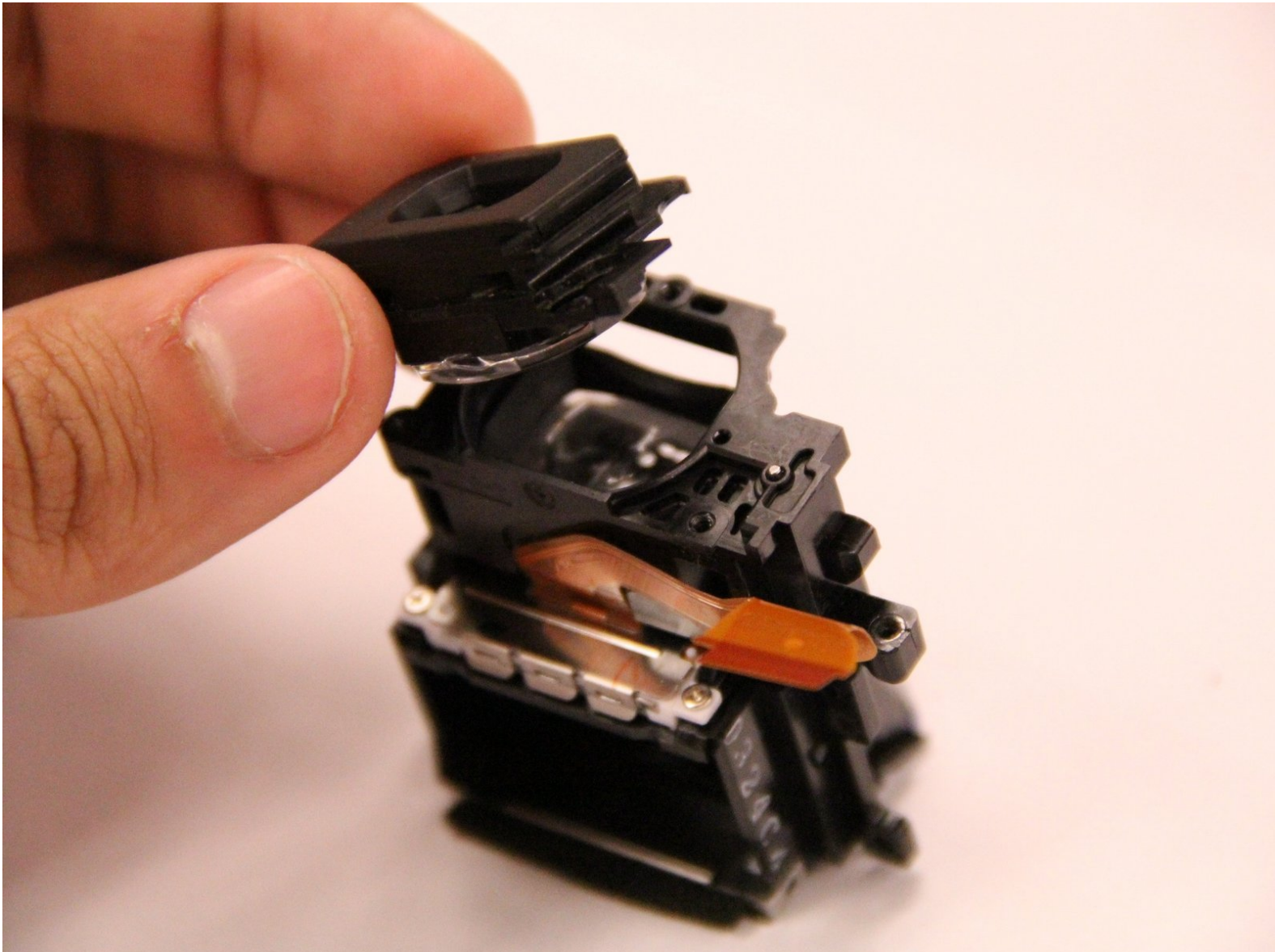




Canon EOS Rebel T2i Dioptic Adjustment Lens Replacement

This guide will show you how to replace the dioptic lens.

Written By: Jacob Jaskolka





TOOLS:

- [Essential Electronics Toolkit \(1\)](#)
-

Step 1 — Dioptic Adjustment Lens



- Turn off camera using the power button on the top of the camera.
- On the bottom of the camera, open the battery door and remove the battery.

Step 2



- Remove the 7 screws from the bottom of the camera using a Phillips screwdriver

Step 3



- On the top cover, remove the two screws from under the metal tabs that are used to attach the camera straps.

Step 4



- Remove the two screws on the right side of the camera.

Step 5



- Remove 1 screw from the left side of the camera.
- Inside the rubber door, remove the two black screws.

Step 6



- Remove the two screws beneath the eyepiece

Step 7



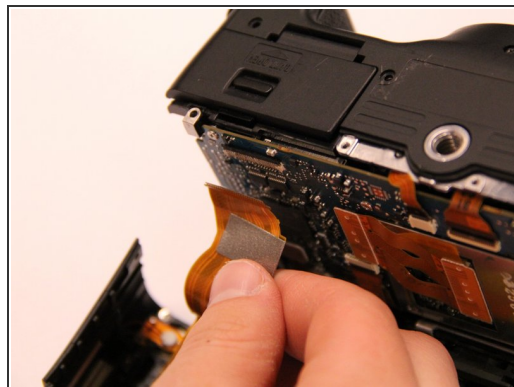
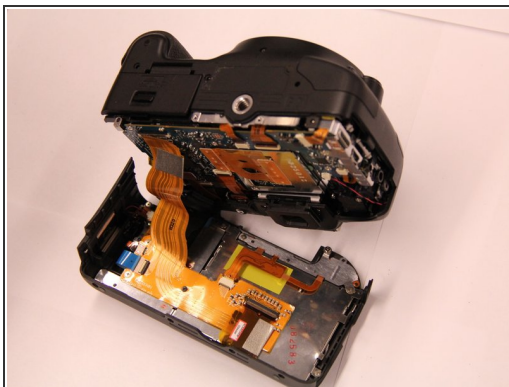
- Remove the screw in the center of the viewfinder focus knob located to the right of the eyepiece.

Step 8



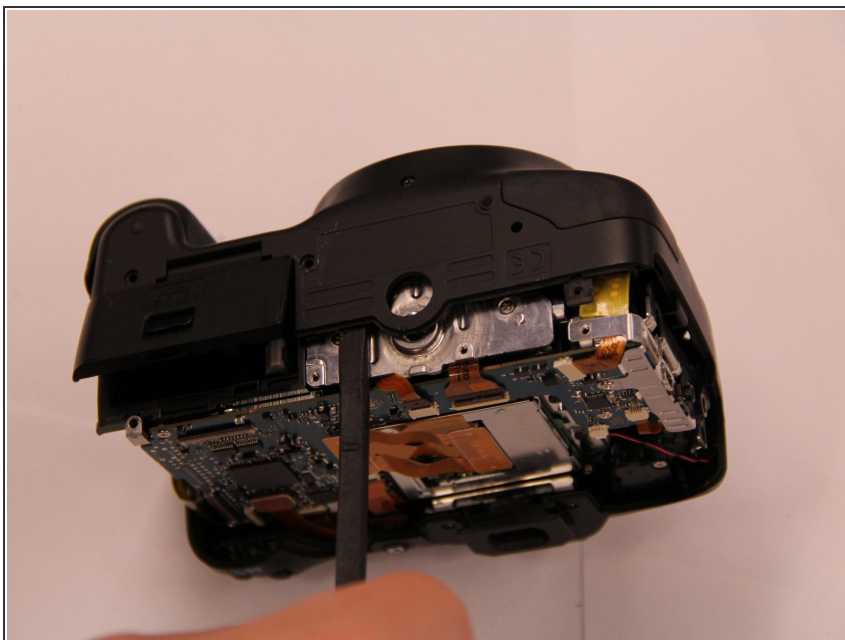
- Remove the two black screws on the front of the camera just above the lens mounting ring.
- **NOTE:** Do not remove any of the silver screws on the lens mount ring. This could cause problems with auto focussing features.

Step 9



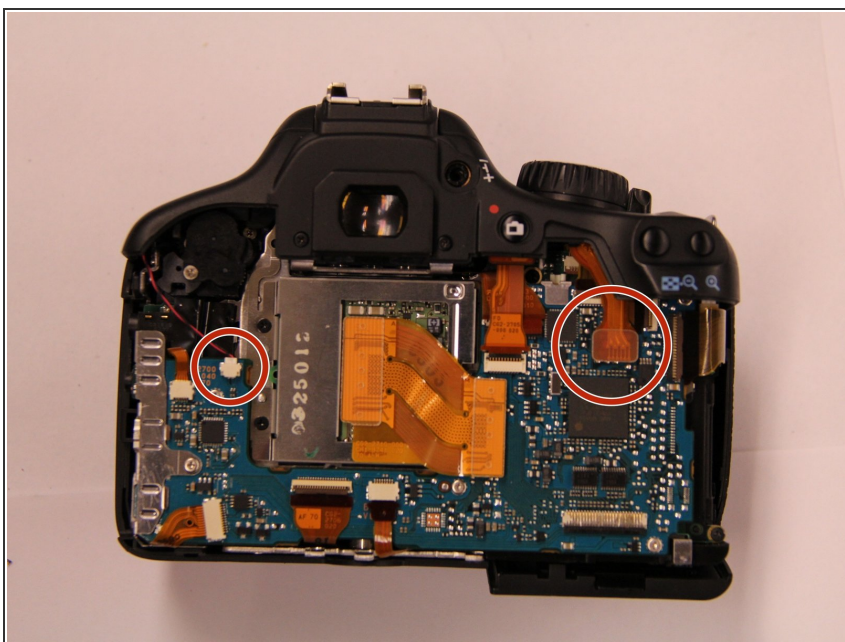
- Using the spudger and plastic opening tool, pry the back of the camera loose.
- Remove the ribbon connector on the lower left hand side of the circuit board.

Step 10



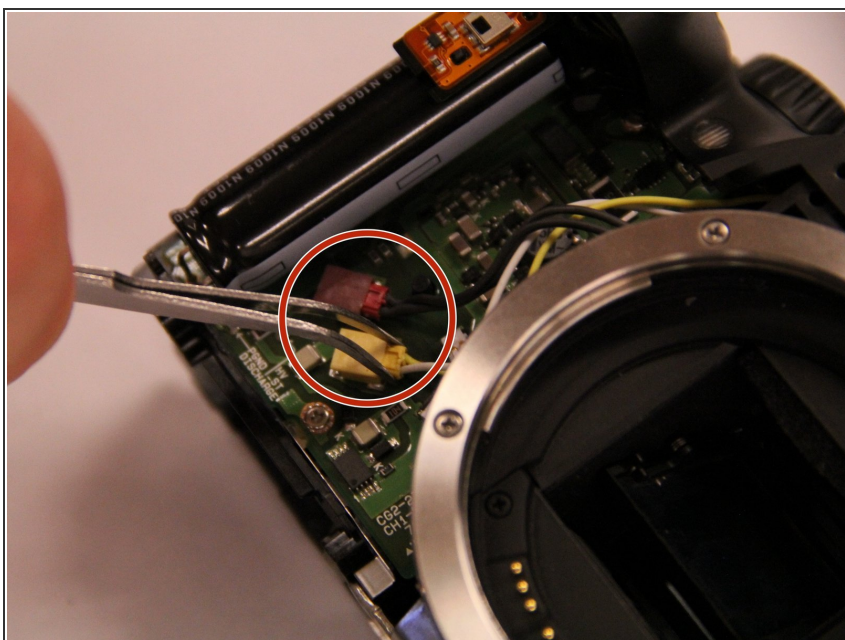
- Using the spudger and plastic opening tool, pry the bottom of the front panel of the camera over the tripod mount.

Step 11



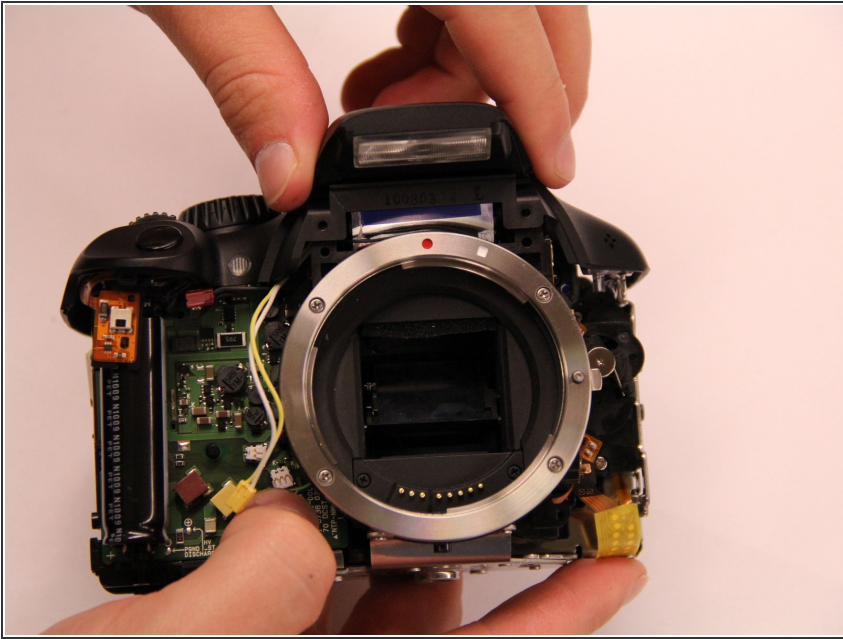
- Remove the ribbon connector on the upper right hand side of the circuit board.
- Remove the microphone connection on the upper left hand side of the circuit board.

Step 12



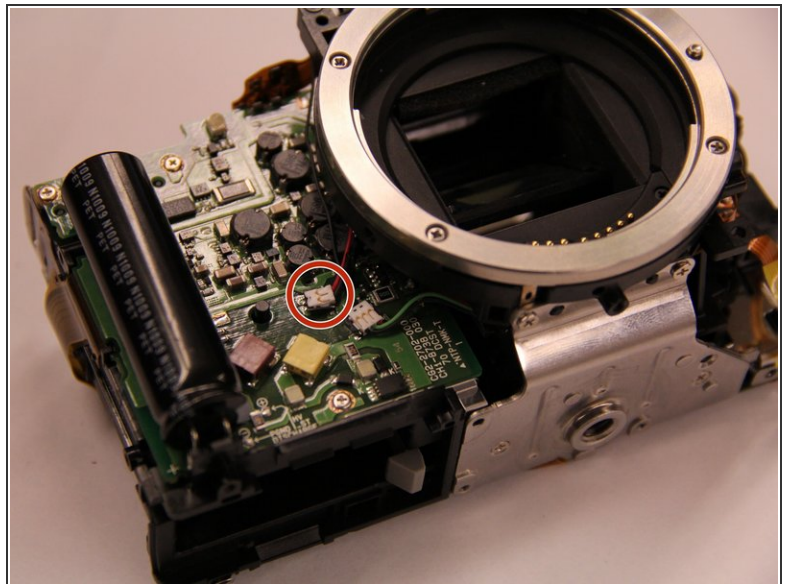
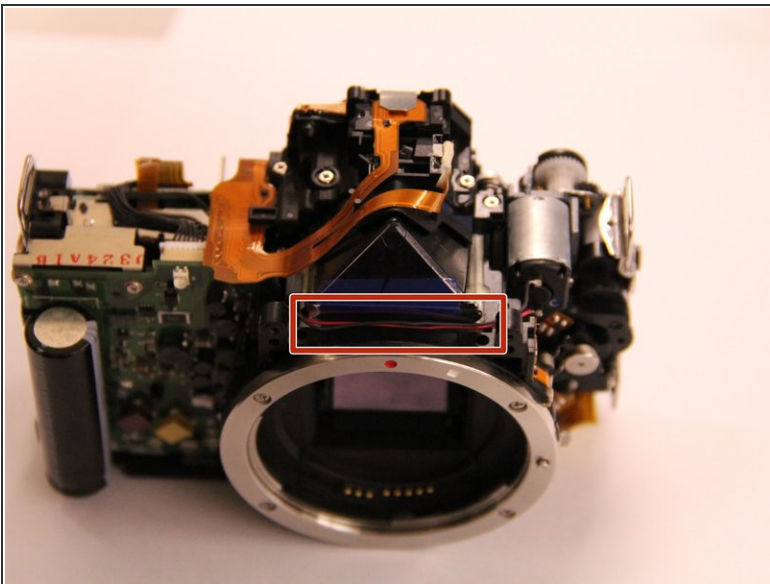
- On the lower left side on the front of the camera, disconnect the red and yellow wires from the circuit board.

Step 13



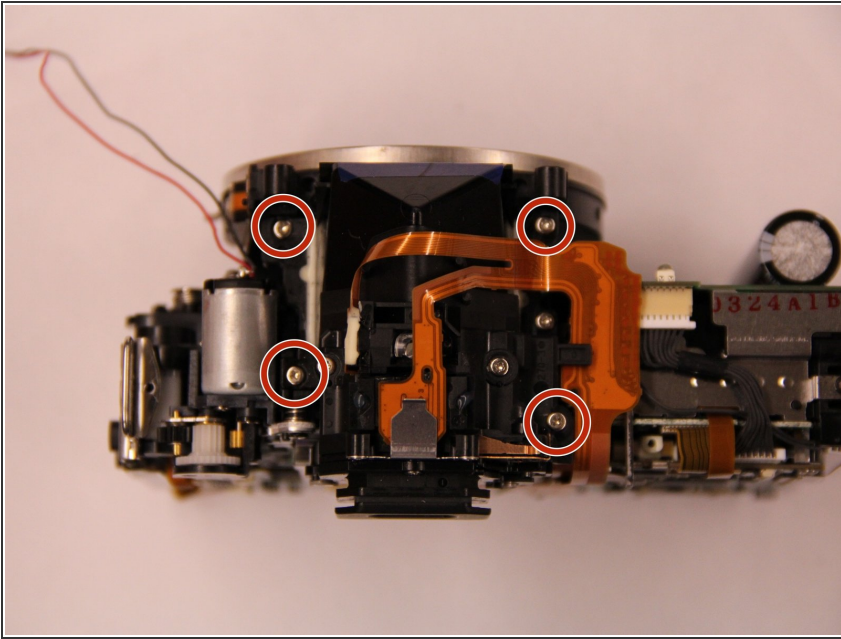
- Pull the top cover free.

Step 14



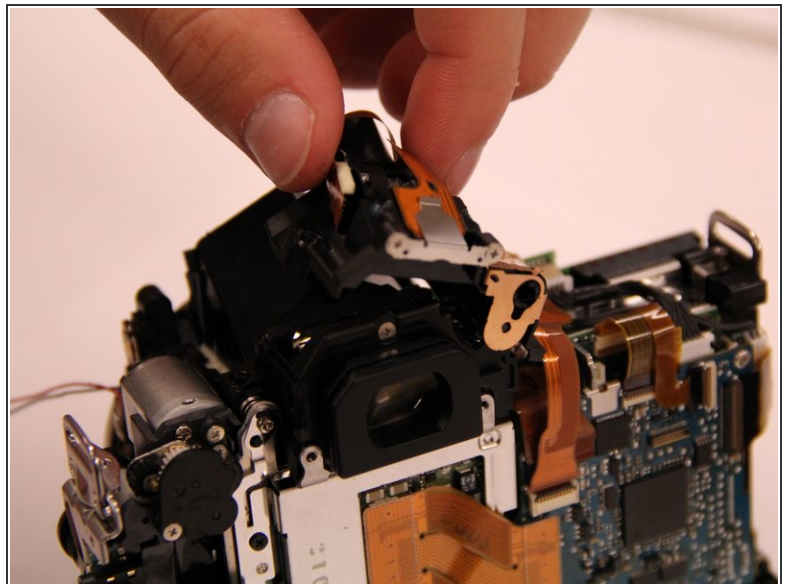
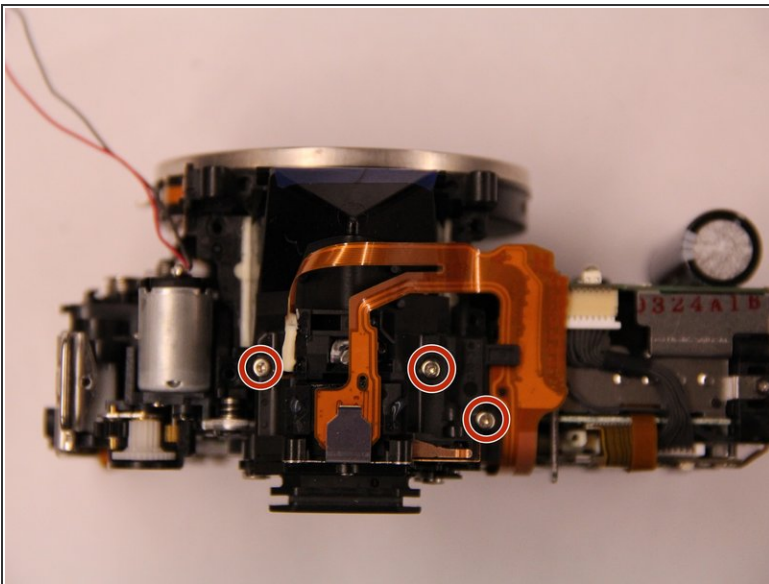
- Remove the red wire that travels across the mirror box.

Step 15



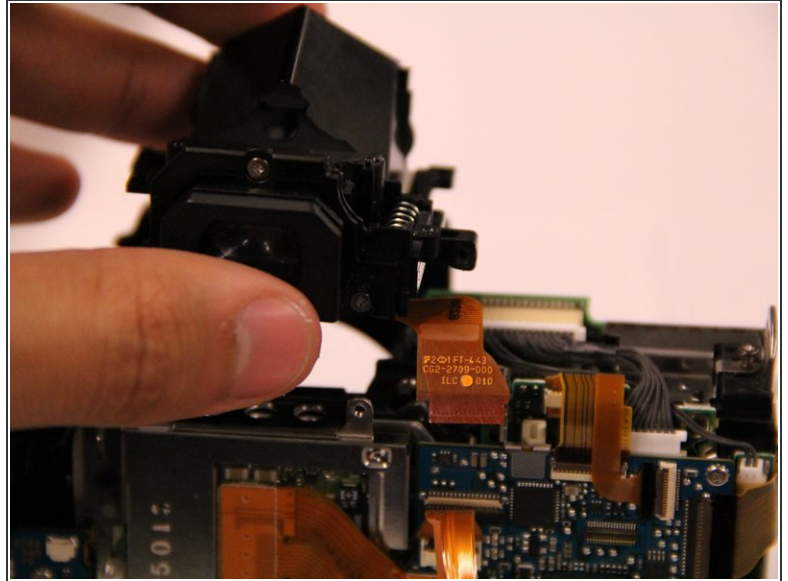
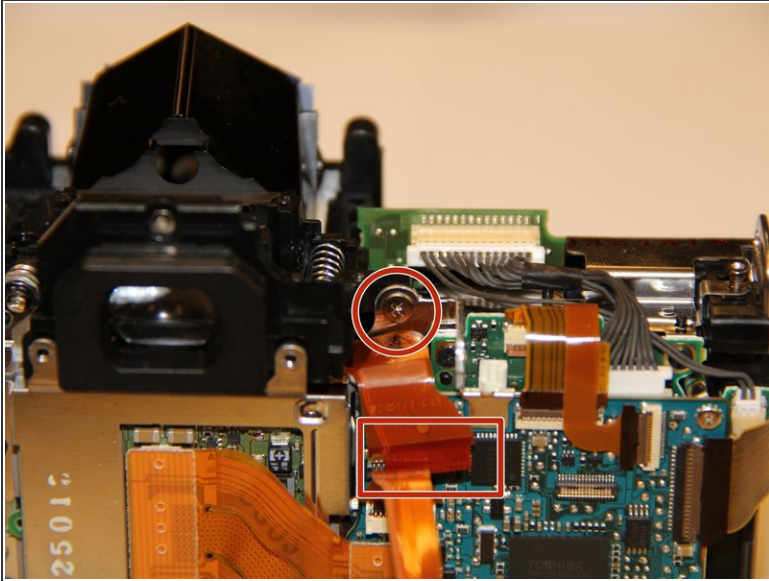
- Remove the 4 screws holding the mirror box in place.

Step 16



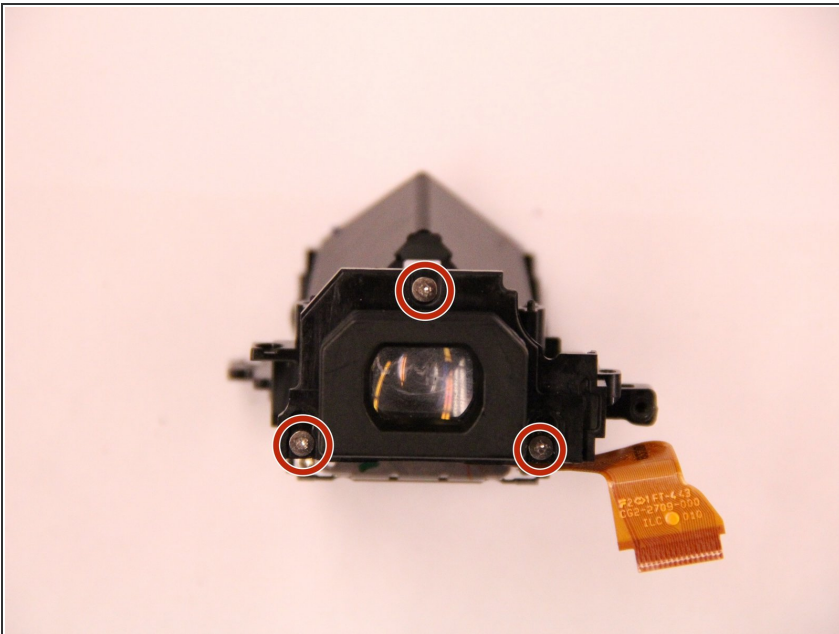
- Remove 3 screws to disconnect the ribbon mount assembly

Step 17



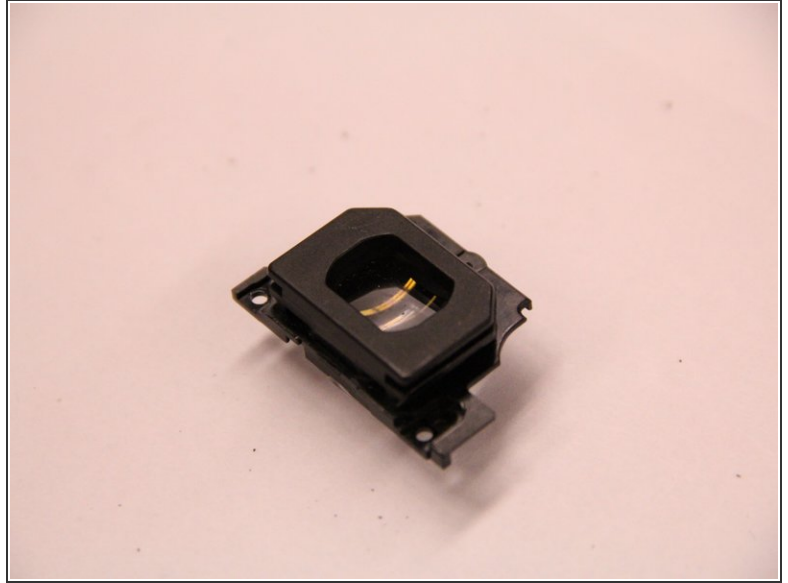
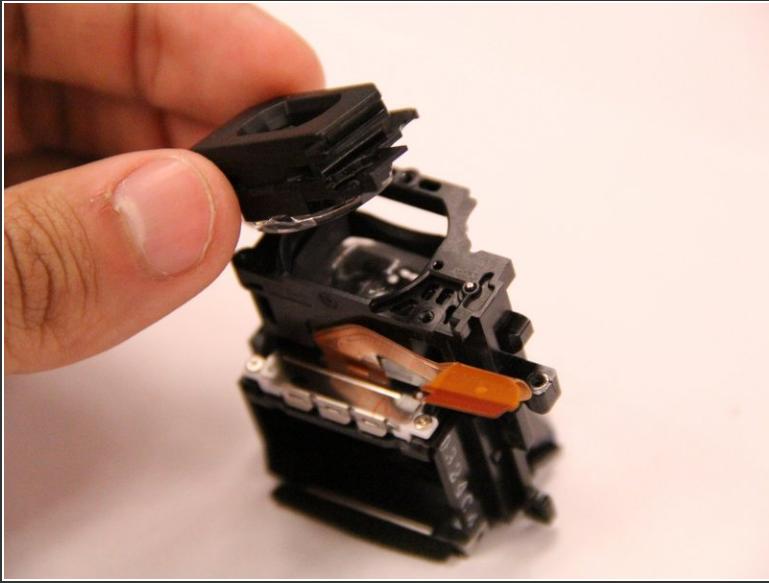
- Now that the top assembly is free, this exposes another screw on the right side of the mirror box.
 - Remove this screw.
 - Remove the orange ribbon cable.

Step 18



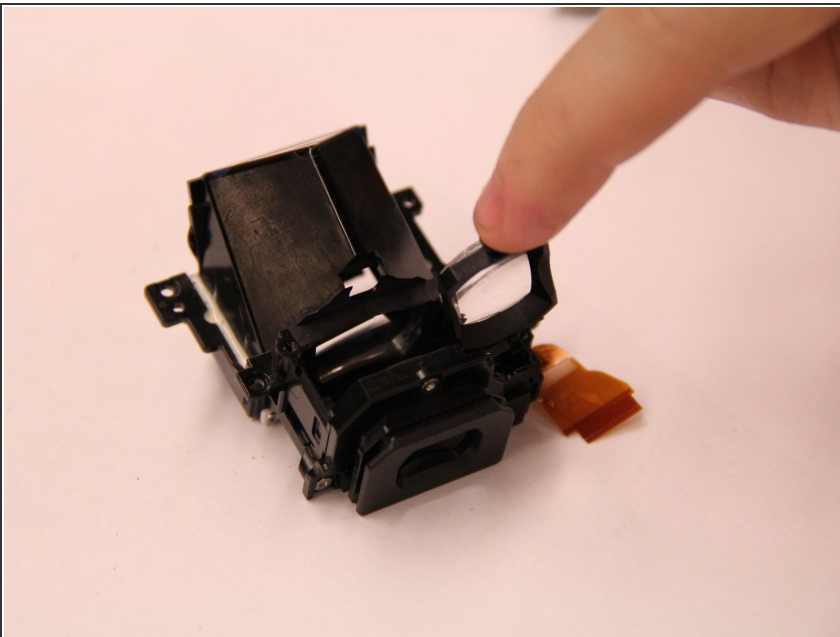
- Remove the viewfinder assembly from the camera. The screws that hold the eyepiece in place are accessible. Remove these 3 screws from the rear face of the eyepiece. Two screws are located at the bottom and one screw is located on top.

Step 19



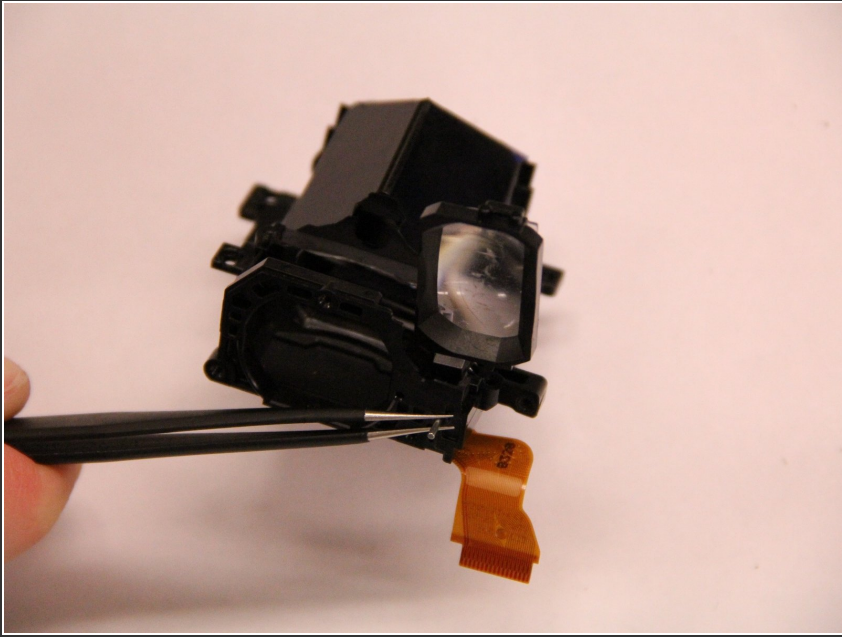
- With the screws removed, the eyepiece can easily be pulled free.

Step 20



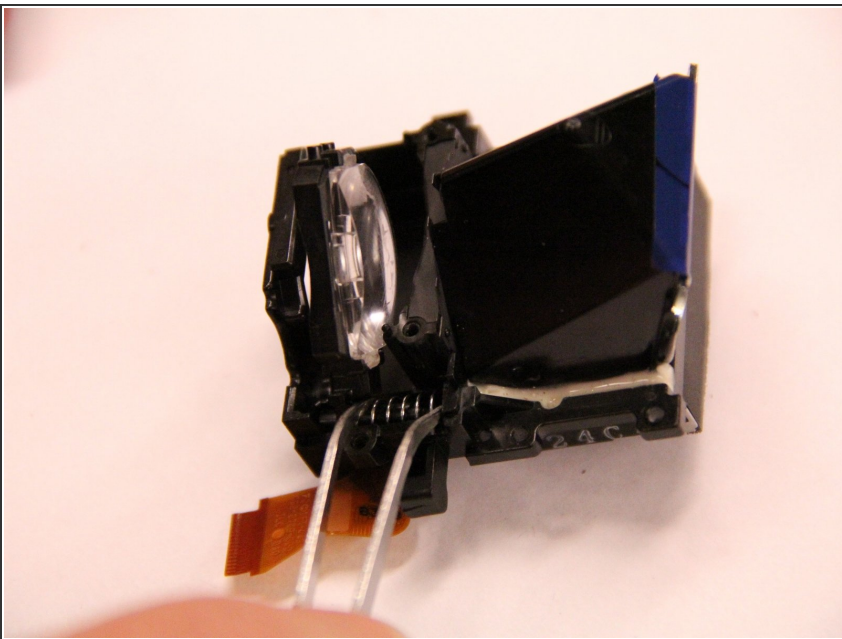
- Swivel the dioptic lens 90 degrees.

Step 21



- Remove pin with tweezers.

Step 22



- Compress spring and remove spring and dioptic lens assembly

To reassemble your device, follow these instructions in reverse order.