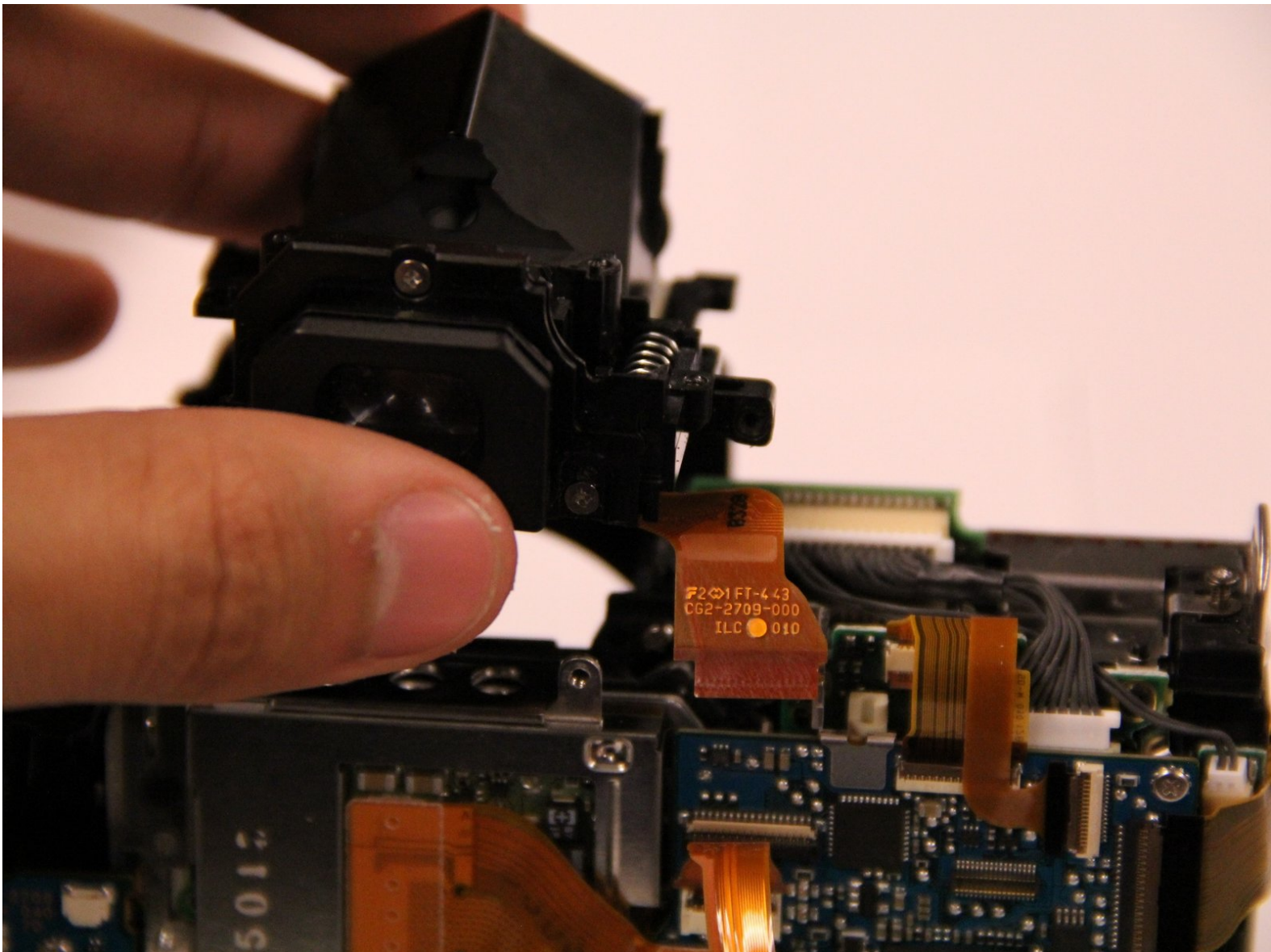




# Canon EOS Rebel T2i Eyepiece Replacement

This guide will show you how to replace the eyepiece

Written By: Jacob Jaskolka





## TOOLS:

- [Phillips #0 Screwdriver](#) (1)
  - [Spudger](#) (1)
  - [iFixit Opening Tools](#) (1)
-

## Step 1 — Eyepiece



- Turn off camera using the power button on the top of the camera.
- On the bottom of the camera, open the battery door and remove the battery.

## Step 2



- Remove the 7 screws from the bottom of the camera using a Phillips screwdriver



### Step 3



- On the top cover, remove the two screws from under the metal tabs that are used to attach the camera straps.

### Step 4



- Remove the two screws on the right side of the camera.

## Step 5



- Remove 1 screw from the left side of the camera.
- Inside the rubber door, remove the two black screws.

## Step 6



- Remove the two screw beneath the eyepiece

## Step 7



- Remove the screw in the center of the viewfinder focus knob located to the right of the eyepiece.

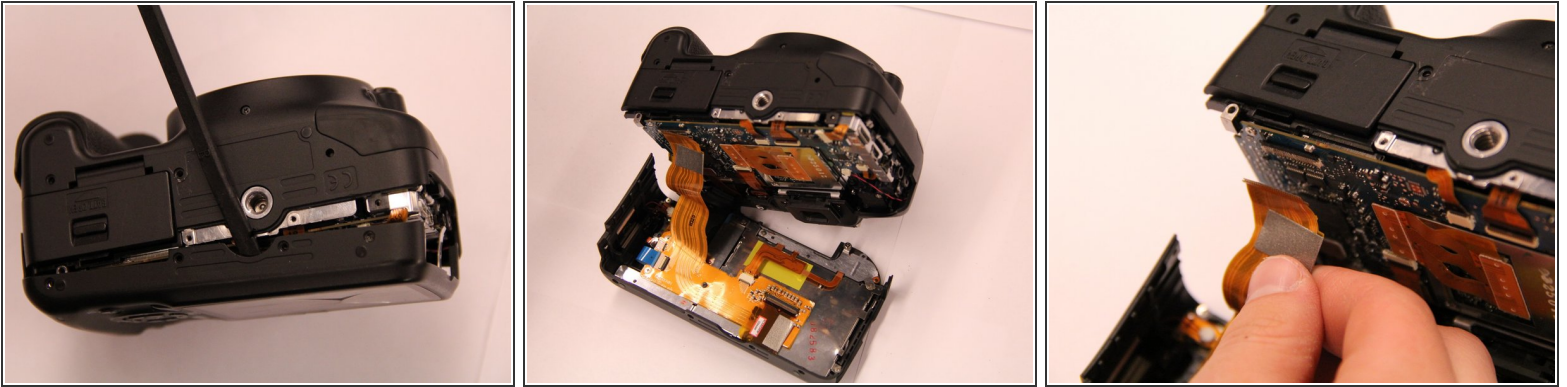
## Step 8



- Remove the two black screws on the front of the camera just above the lens mounting ring.
- **NOTE:** Do not remove any of the silver screws on the lens mount ring. This could cause problems with auto focussing features.

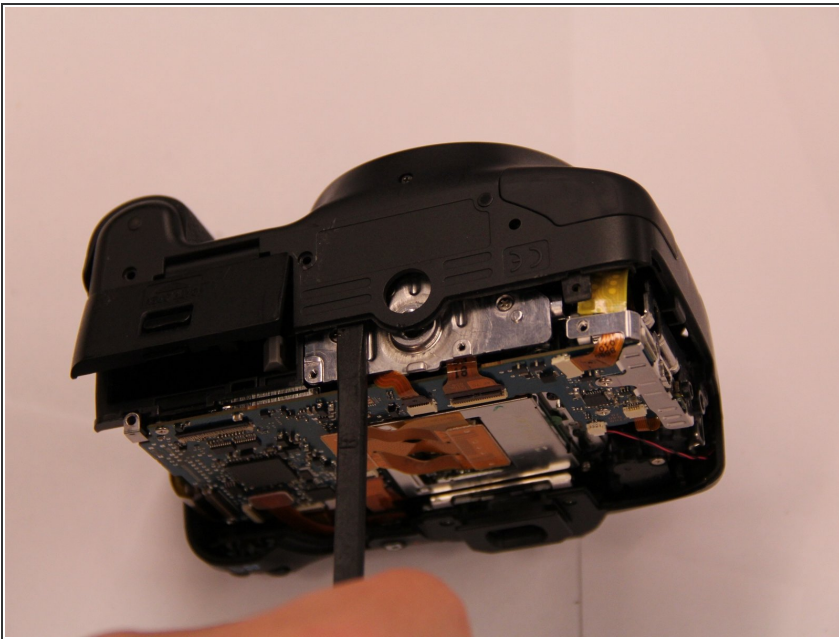


## Step 9



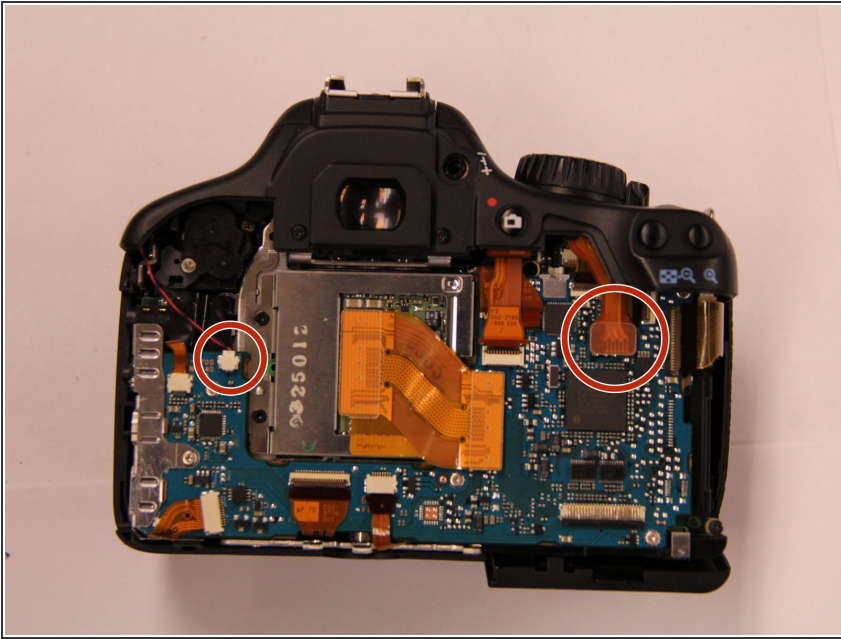
- Using the spudger and plastic opening tool, pry the back of the camera loose.
- Remove the ribbon connector on the lower left hand side of the circuit board.

## Step 10



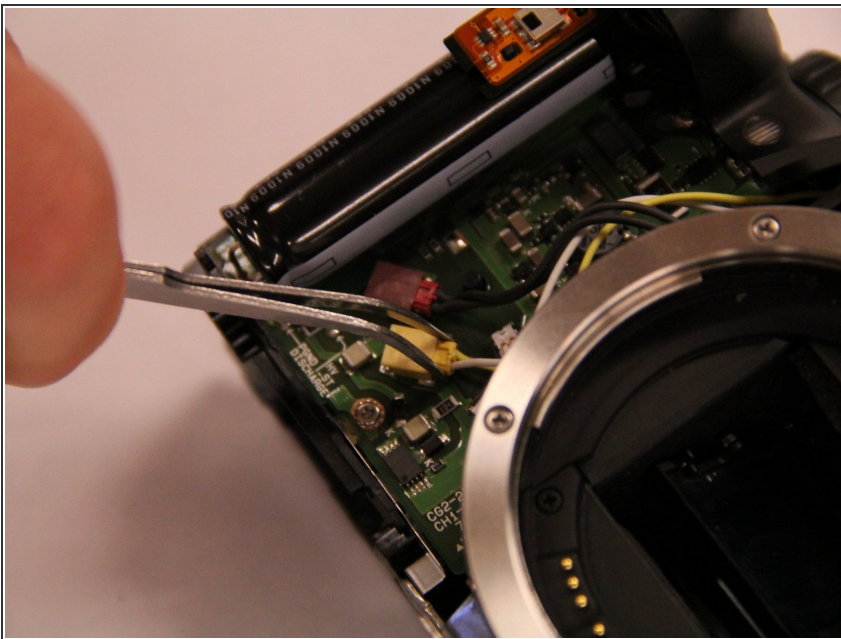
- Using the spudger and plastic opening tool, pry the bottom of the front panel of the camera over the tripod mount.

## Step 11



- Remove the ribbon connector on the upper right hand side of the circuit board.
- Remove the microphone connection on the upper left hand side of the circuit board.

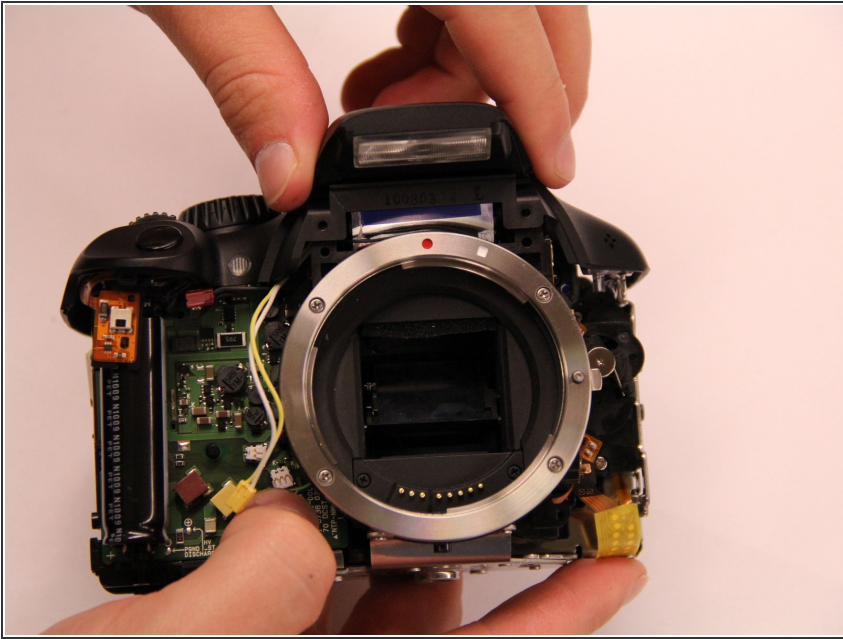
## Step 12



- On the lower left side on the front of the camera, disconnect the red and yellow wires from the circuit board.

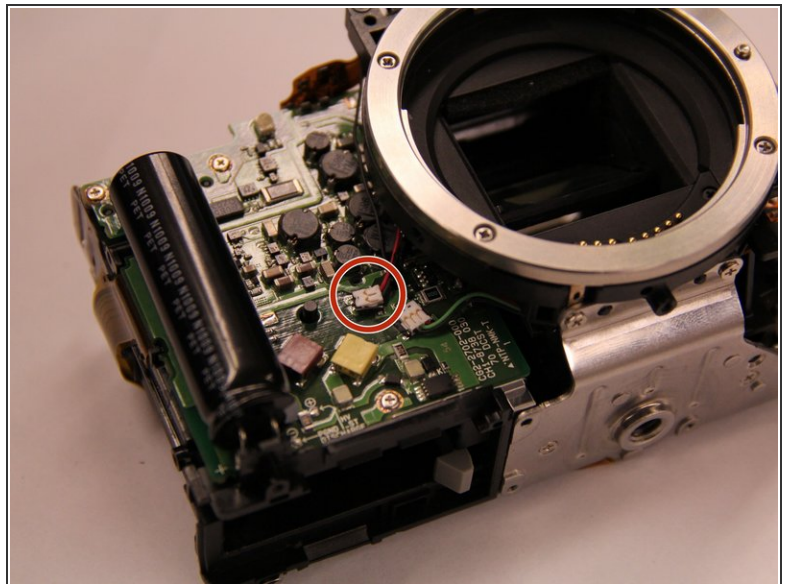
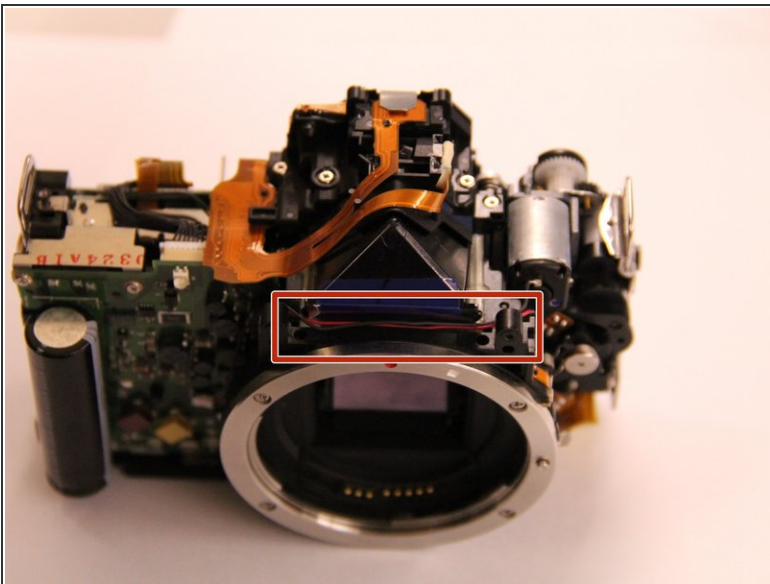


## Step 13



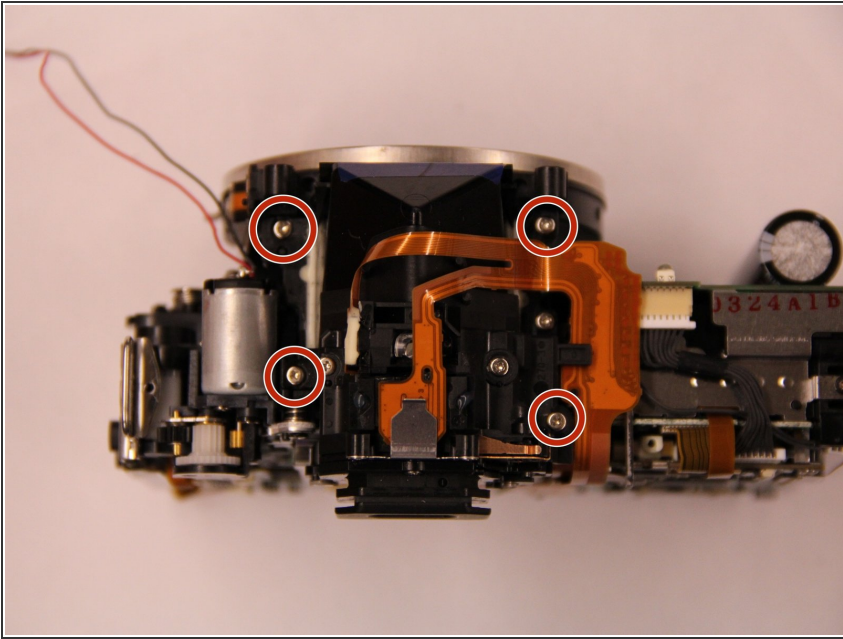
- Pull the top cover free.

## Step 14



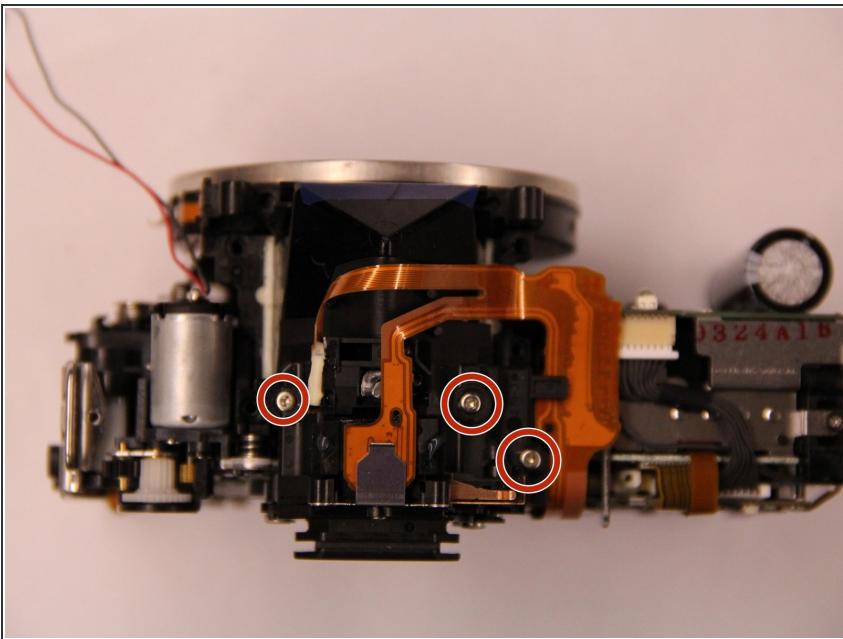
- Remove the red wire that travels across the mirror box.

## Step 15



- Remove the 4 screws holding the mirror box in place.

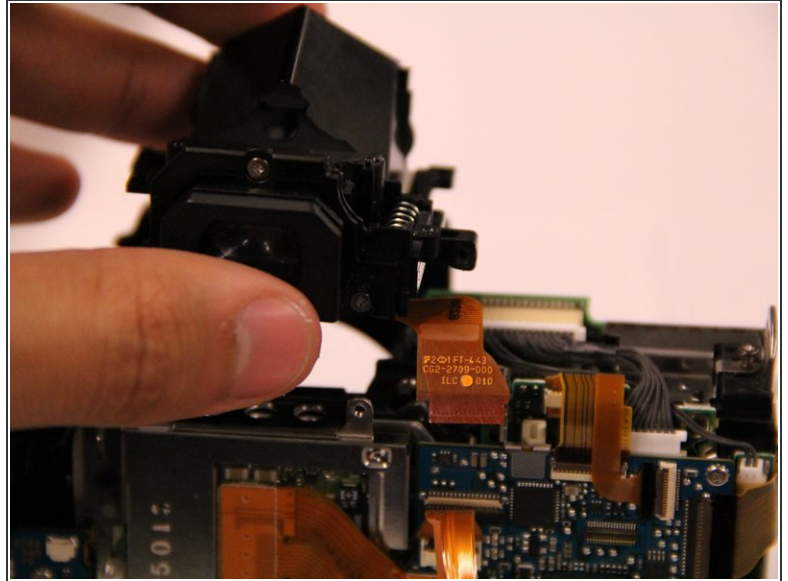
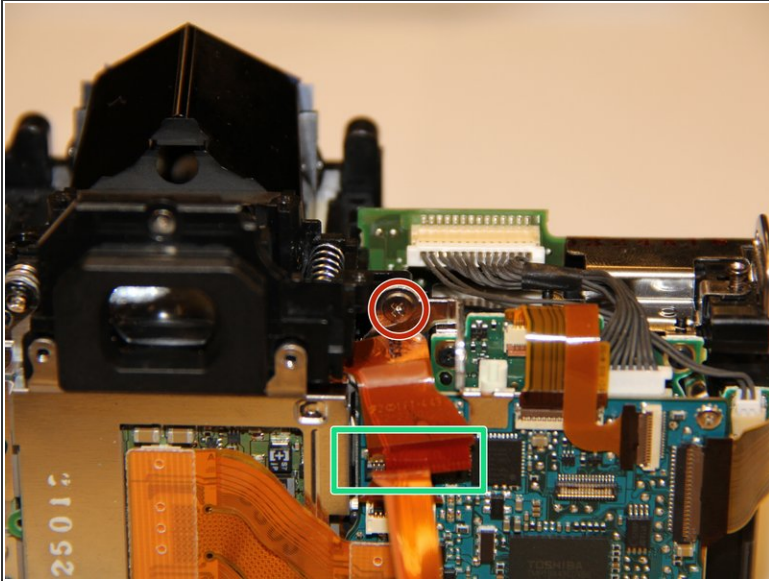
## Step 16



- Remove 3 screws to disconnect the ribbon mount assembly

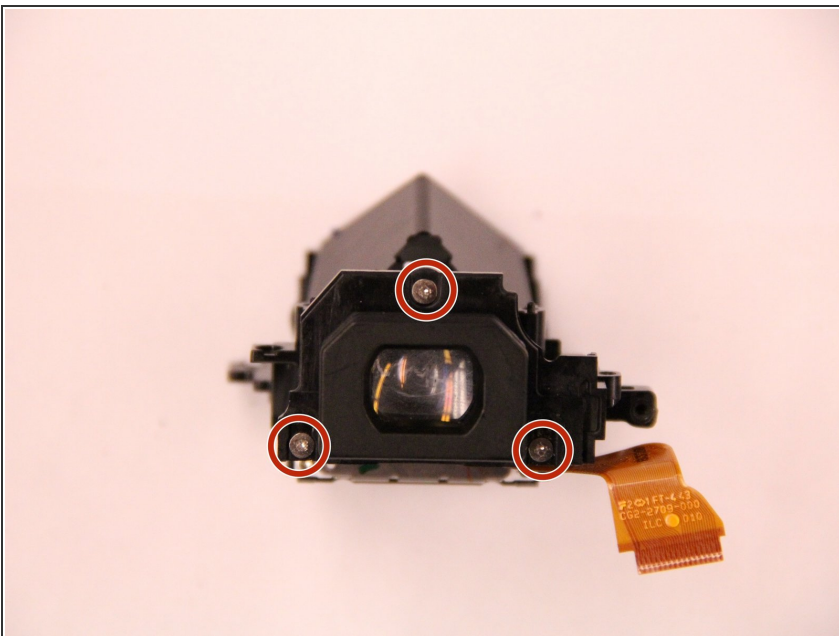


## Step 17



- Now that the top assembly is free, this exposes another screw on the right side of the mirror box.
  - Remove this screw.
  - Remove the orange ribbon cable.

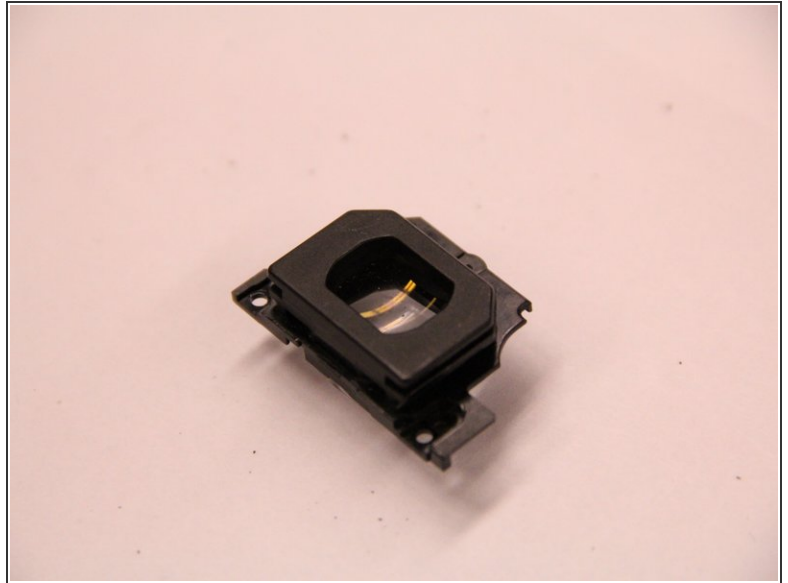
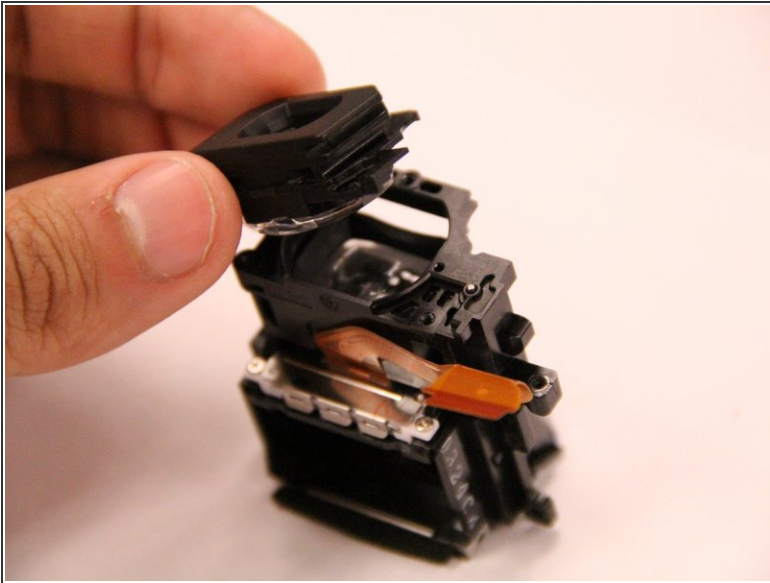
## Step 18



- Remove the viewfinder assembly from the camera. The screws that hold the eyepiece in place are accessible. Remove these 3 screws from the rear face of the eyepiece. Two screws are located at the bottom and one screw is located on top.



## Step 19



- With the screws removed, the eyepiece can easily be pulled free.

To reassemble your device, follow these instructions in reverse order.