



Canon EOS Rebel T2i LCD Screen Replacement

This is how to replace a broken LCD Screen.

Written By: Stefan Seidler



INTRODUCTION

The removal of the rear casing to access the screen along with the removal of the screen unit.



TOOLS:

- [Phillips #00 Screwdriver](#) (1)
 - [iFixit Opening Tools](#) (1)
-

Step 1 — Turn the camera off.



- Before opening the camera, turn it off by sliding the power switch to the off position.

Step 2 — Remove the battery



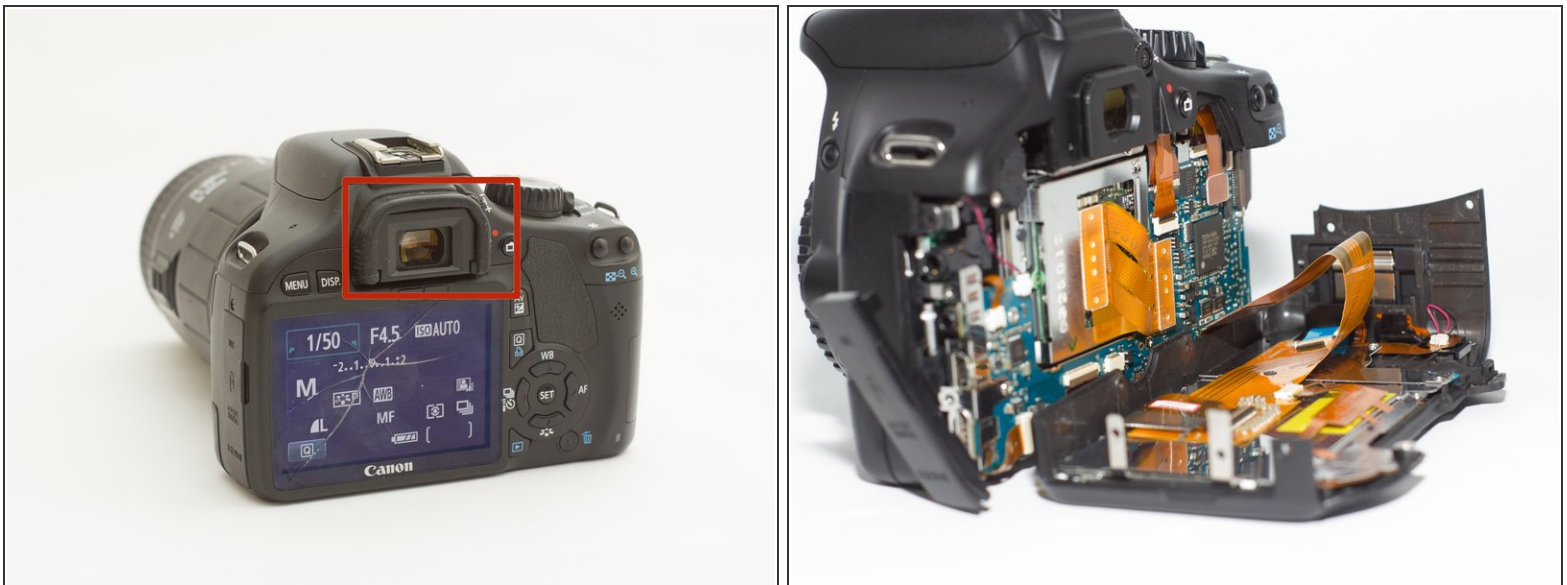
- Open the battery compartment, and remove the battery before continuing to the next step.

Step 3 — Remove the back casing.



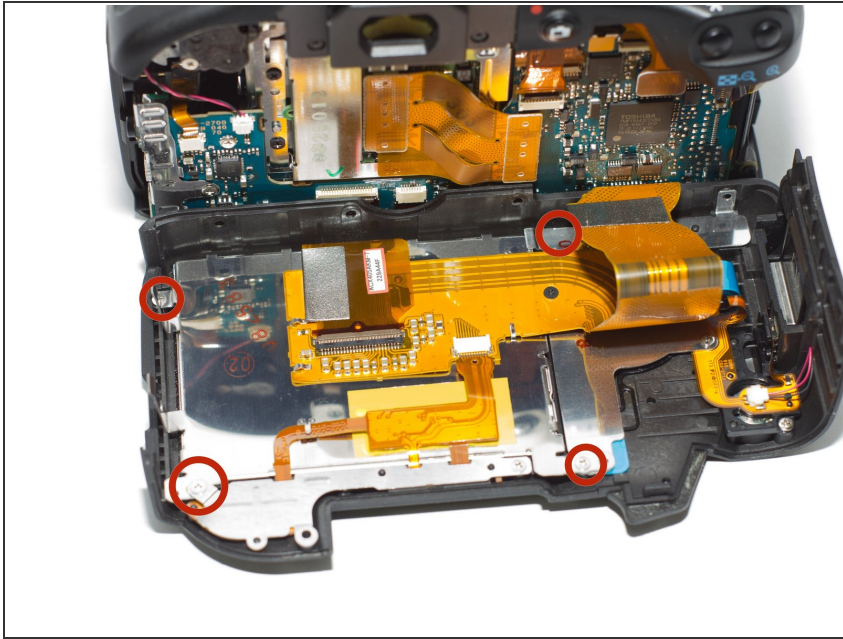
- Use a 00 Phillips head screwdriver to unscrew these screws.

Step 4 — Open the back panel.



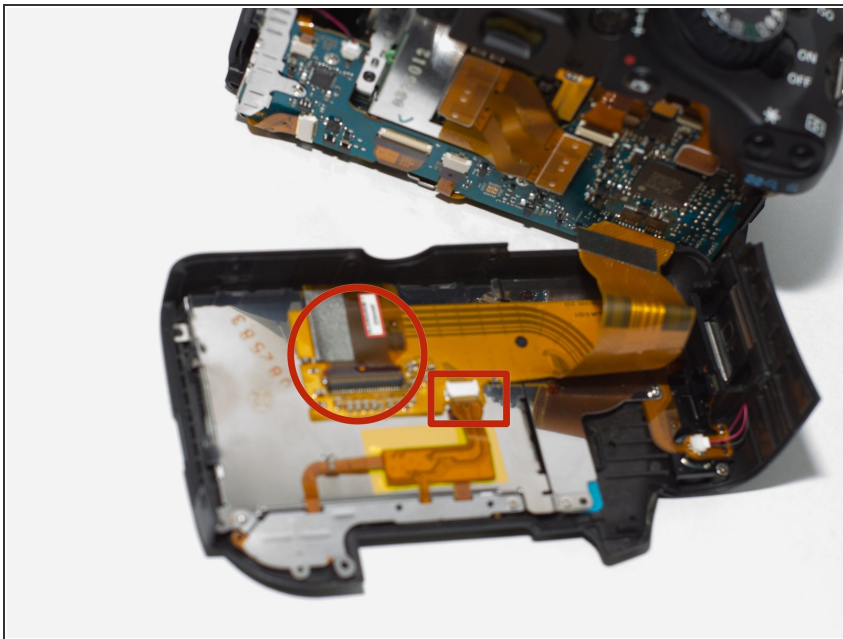
- Slide the plastic piece around the viewfinder vertically upwards.
- Carefully remove the back panel with your fingers.

Step 5 — Unscrew the LCD screen.



- Remove these screws.
- There are also 2 screws that hold the small metal piece at the bottom of the image on - remove those as well (not circled in picture). In the middle of the orange ribbon there is another screw that needs removing (below the top-right screw that is circled in the image). Remove that as well for a total of 7 screws.

Step 6 — Disconnect the ribbon wires.



- Remove these tabs.

Step 7 — Replace the old screen with a new one.



- Lift the broken screen and remove it. Then replace the new screen and attach the tabs that were removed in step 5. Replace the battery and turn on the camera to make sure it works.

This guide explains how to replace the LCD screen. To reassemble your device, follow these instructions in reverse order.