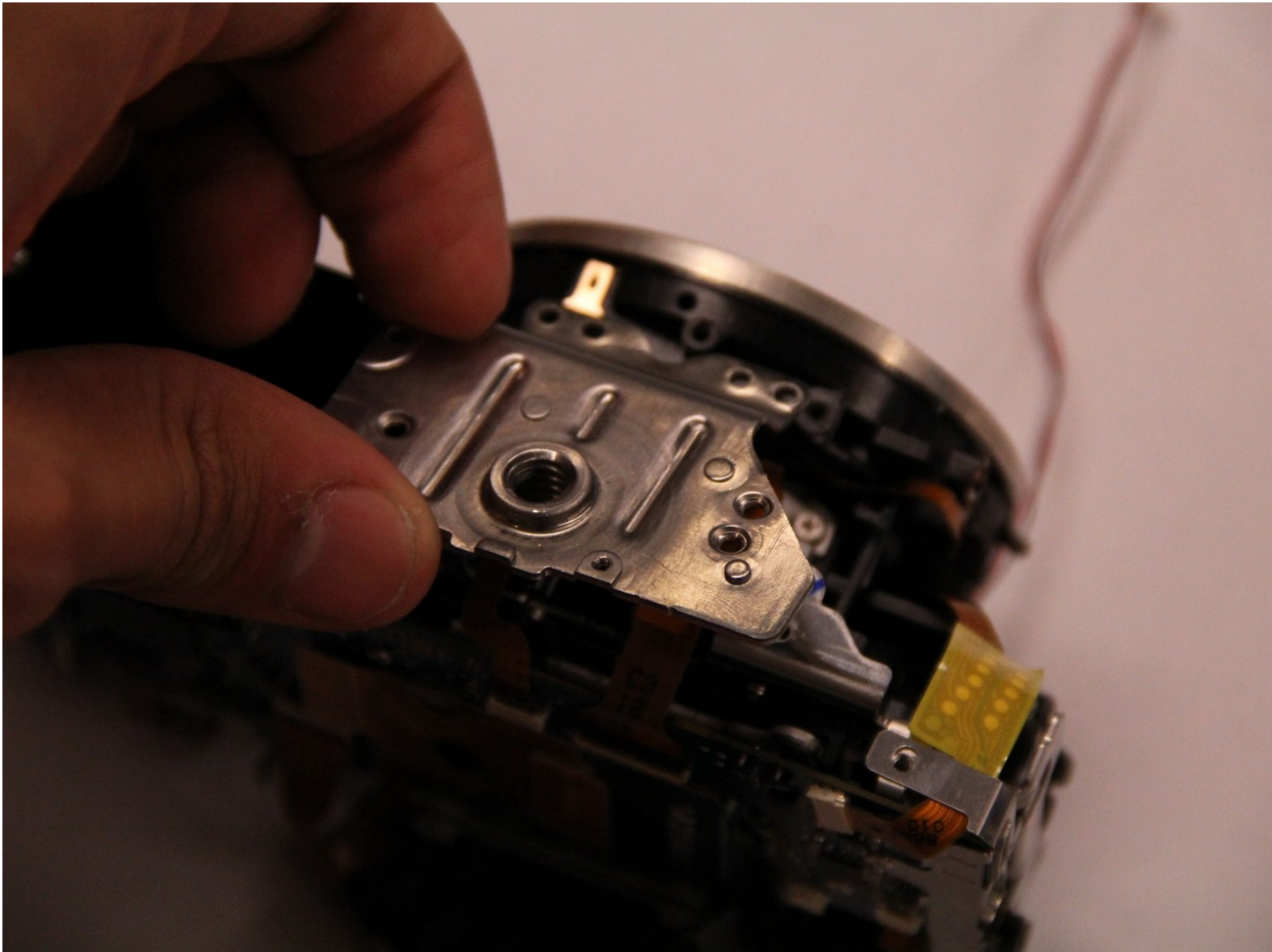




Canon EOS Rebel T2i Tripod Mount Replacement

This guide will show you how to replace the tripod mount

Written By: Jacob Jaskolka





TOOLS:

- [Essential Electronics Toolkit](#) (1)
-

Step 1 — Tripod Mount



- Turn off camera using the power button on the top of the camera.
- On the bottom of the camera, open the battery door and remove the battery.

Step 2



- Remove the 7 screws from the bottom of the camera using a Phillips screwdriver

Step 3



- Remove the two screws on the right side of the camera.

Step 4



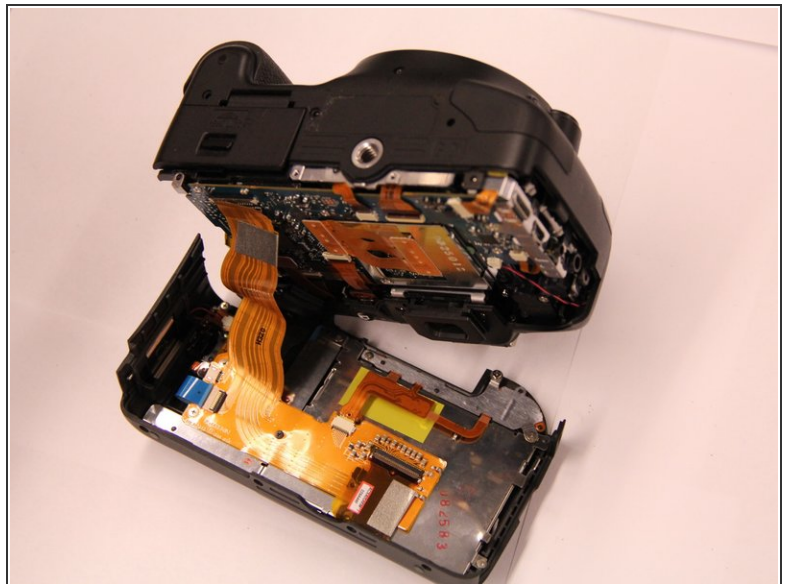
- Remove 1 screw from the left side of the camera.
- Inside the rubber door, remove the two silver screws.

Step 5



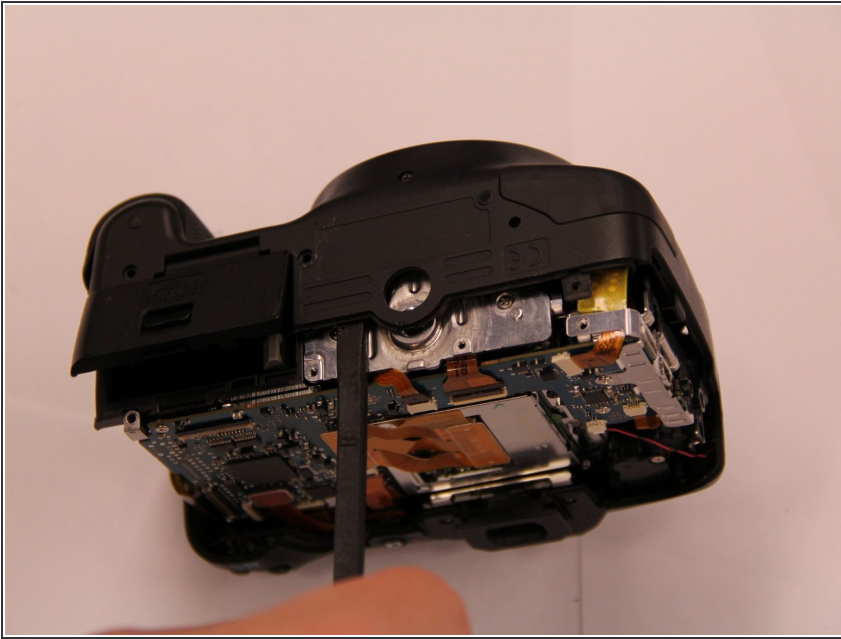
- Remove the two black screws on the front of the camera just above the lens mounting ring.
- **NOTE:** Do not remove any of the silver screws on the lens mount ring. This could cause problems with auto focussing features.

Step 6



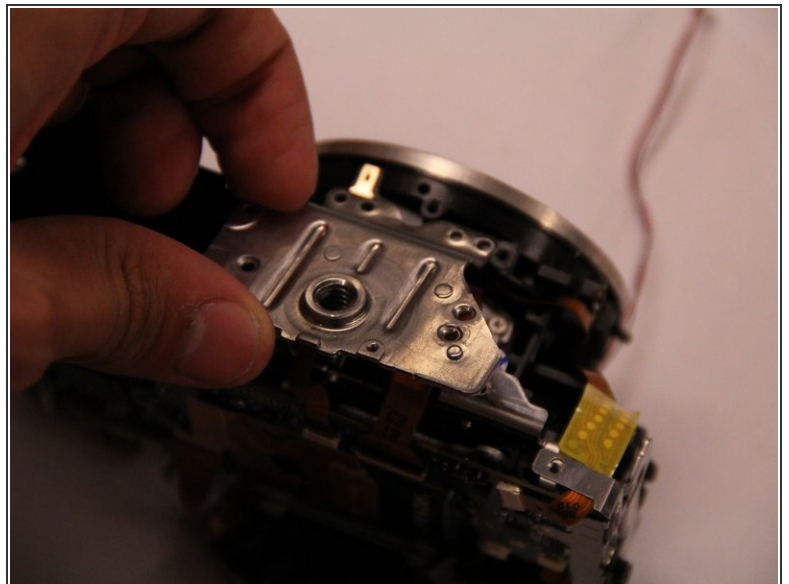
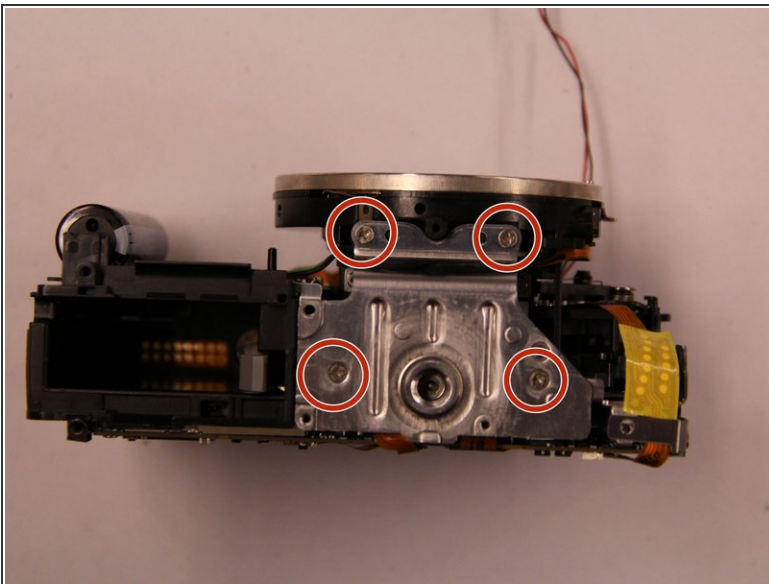
- Using the spudger and plastic opening tool, pry the back of the camera loose.

Step 7



- Using the spudger and plastic opening tool, pry the bottom of the front panel of the camera over the tripod mount.

Step 8



- The screws holding the tripod mount are now exposed.
- Remove the screws securing the tripod mount
- With the screws removed, the tripod mount can now be easily pulled free.

To reassemble your device, follow these instructions in reverse order.