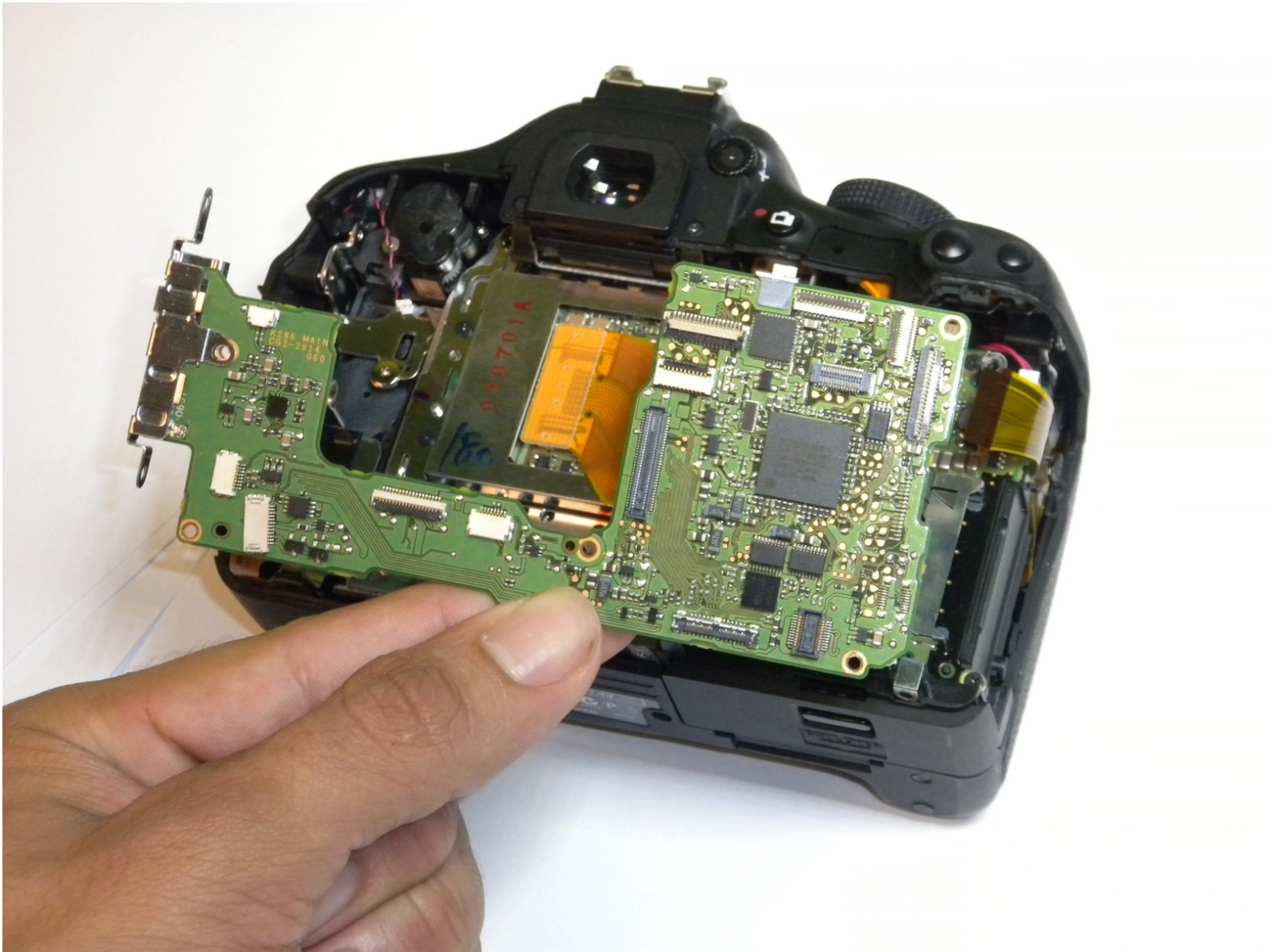




Canon EOS Rebel T3i Motherboard Replacement

Replace the damaged motherboard.

Written By: Natalie Crock



INTRODUCTION

Replacing the motherboard is a last resort for correcting water damage to the camera. This guide will help you remove it step-by-step.



TOOLS:

- [Tweezers](#) (1)
 - [Spudger](#) (1)
 - [Phillips #000 Screwdriver](#) (1)
-

Step 1 — Battery



- Locate the battery compartment on the bottom of the camera.

Step 2



- Hook your finger onto the compartment door latch.
- Open the battery compartment door.

Step 3



- Remove the battery from the compartment.

Step 4 — Motherboard



- Peel away the rubber grip on the left side of the camera with your fingers.

i The grip should feel like a thick sticker as it comes off.

Step 5



- Remove four 3 mm Phillips #000 screws on the left side of the camera.

Step 6



- Remove four 3 mm Phillips #000 screws on the bottom of the camera.

Step 7



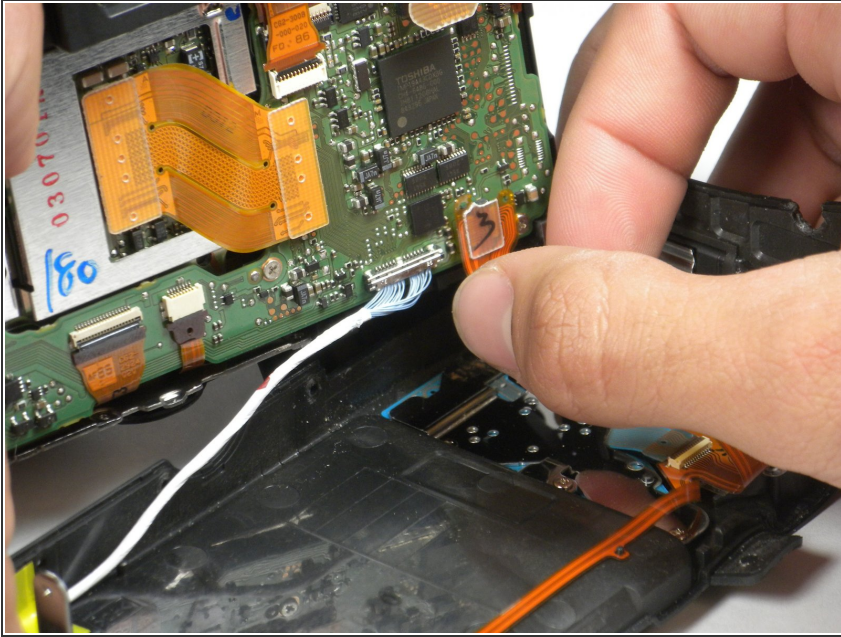
- Remove two 3 mm Phillips #000 screws on the right side of the camera.

Step 8



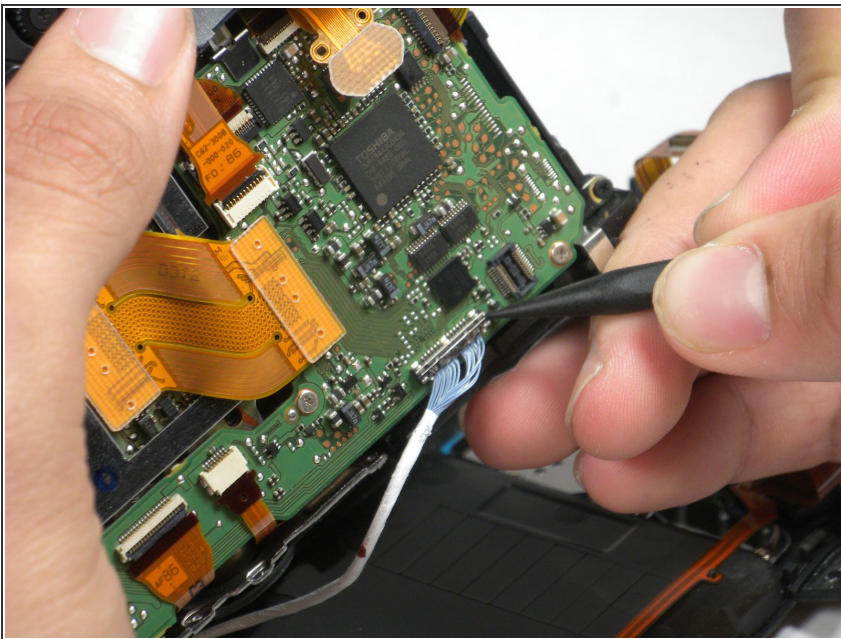
- Remove the back of the camera by lifting from both the left and right sides.
- ⓘ Be careful not to break the orange and blue cables connecting the back panel of the camera to the motherboard.

Step 9



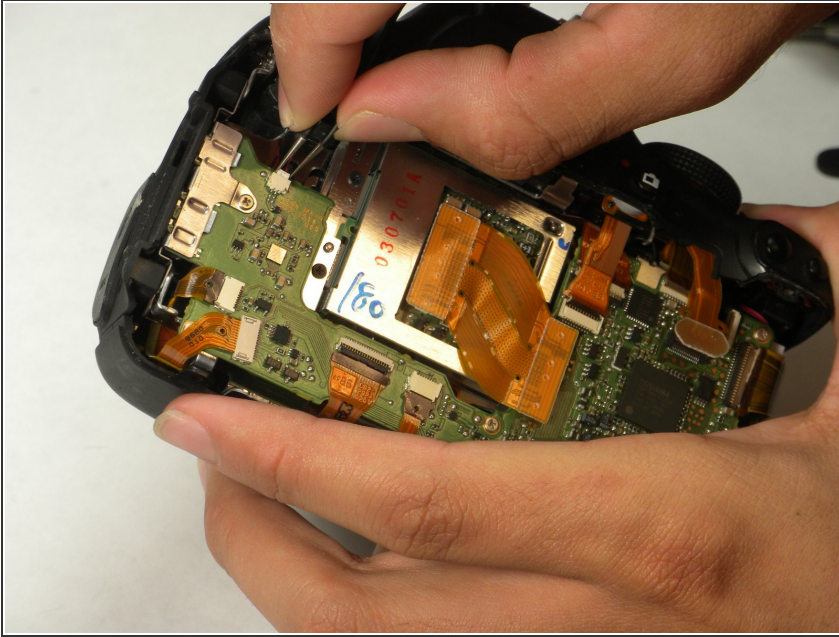
- Disconnect the orange cable at the bottom of the camera by gently pinching with your fingers.

Step 10



- Detach the blue cable by sliding the pointed end of a spudger between the motherboard and the silver prongs connected to the cable.

Step 11



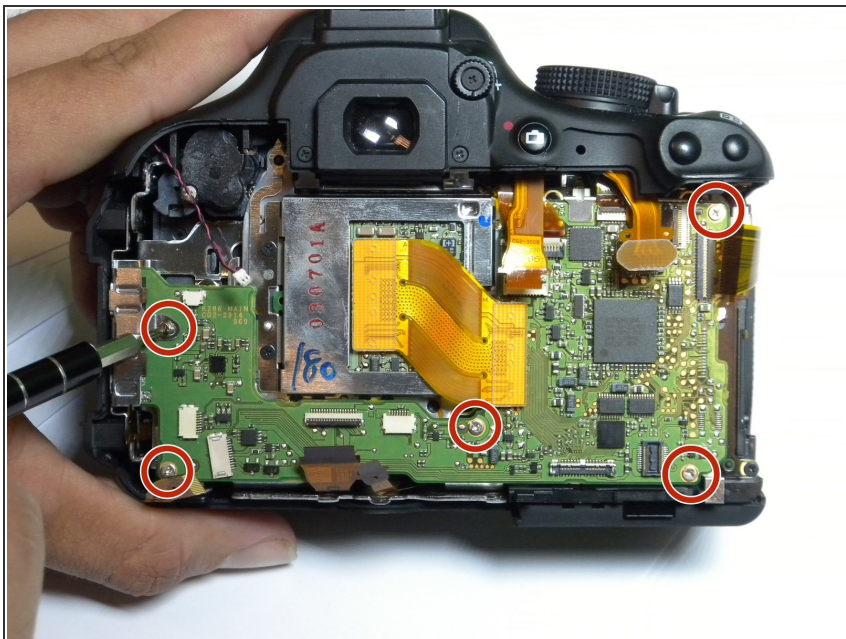
- Locate the cable on the top left corner of the motherboard.
- Pinch the round, white connector with tweezers and gently remove the cable.

Step 12



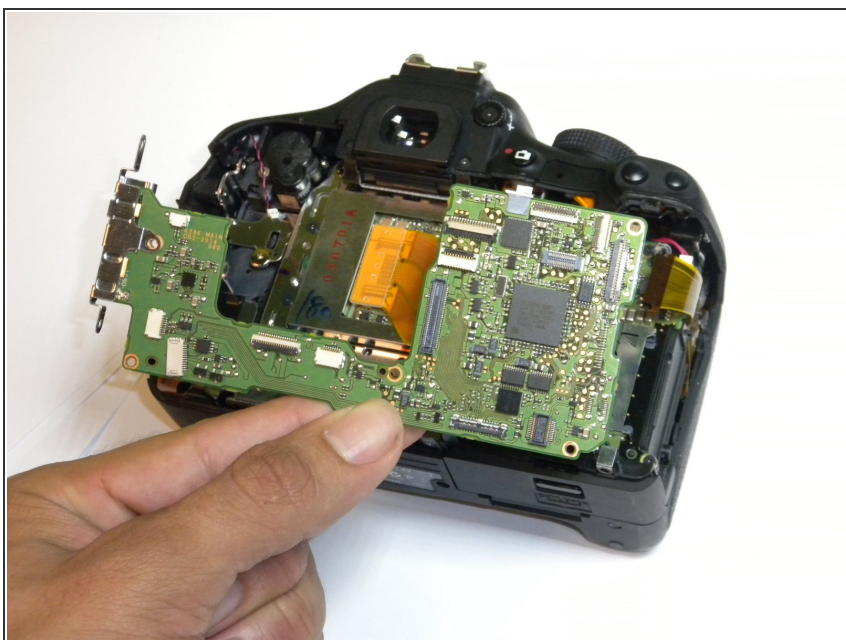
- With tweezers, pinch the ends of the remaining orange ribbon cables, and gently pull these ends off of the motherboard.
- ⓘ Leave the other end of all ribbon cables attached to their components.

Step 13



- Remove the five 4 mm Phillips #000 screws.

Step 14



- Gently lift the motherboard away from the camera.

To reassemble your device, follow these instructions in reverse order.