



Canon EOS Rebel T3i Top Casing Replacement

This guide will help you replace the top casing.

Written By: Natalie Crock



INTRODUCTION

Use this guide to replace the top casing on your Canon EOS Rebel T3i.



TOOLS:

- [Phillips #000 Screwdriver](#) (1)
 - [Spudger](#) (1)
 - [Tweezers](#) (1)
-

Step 1 — Battery



- Locate the battery compartment on the bottom of the camera.

Step 2



- Hook your finger onto the compartment door latch.
- Open the battery compartment door.

Step 3



- Remove the battery from the compartment.

Step 4 — Front Casing



- Remove the two 3 mm Phillips #000 screws.
- ⓘ Some variations of this camera may have one 3mm and one 6mm screws.
- ⓘ If the rubber eyepiece mount is still on the camera, remove it before attempting to separate the case halves.

Step 5



- Remove the three 3 mm Phillips #000 screws.
- Remove the single 6 mm Phillips #000 screw.
- ⓘ Some variation of this camera have two 3mm and two 6mm screws

Step 6



- Peel back the grip tape with your fingernail.
- ⓘ Depending on the age of the camera, the grip tape will stick back in place with no need for extra glue.

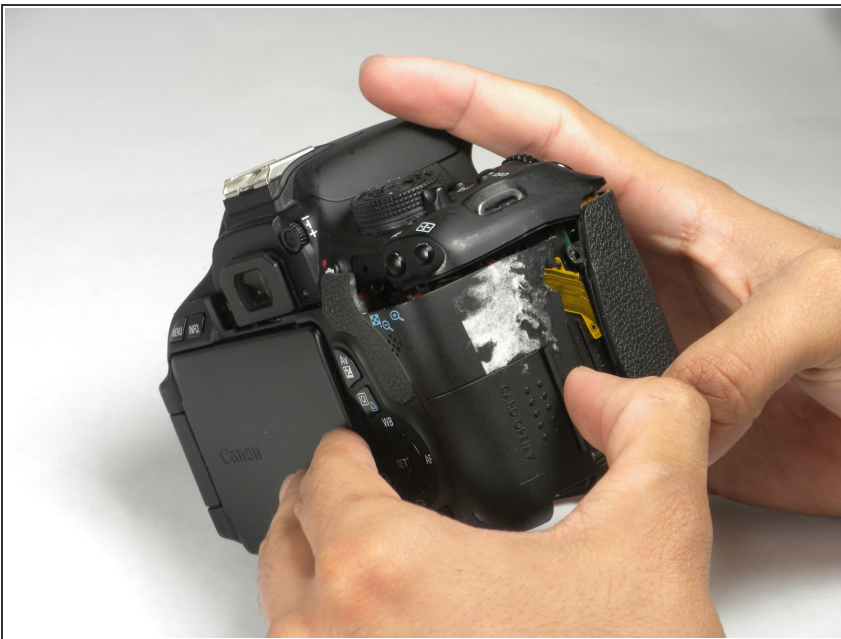
Step 7



- Remove the four 5 mm Phillips #000 screws.

i Some variation of this model may have three 5mm screws and one 6mm

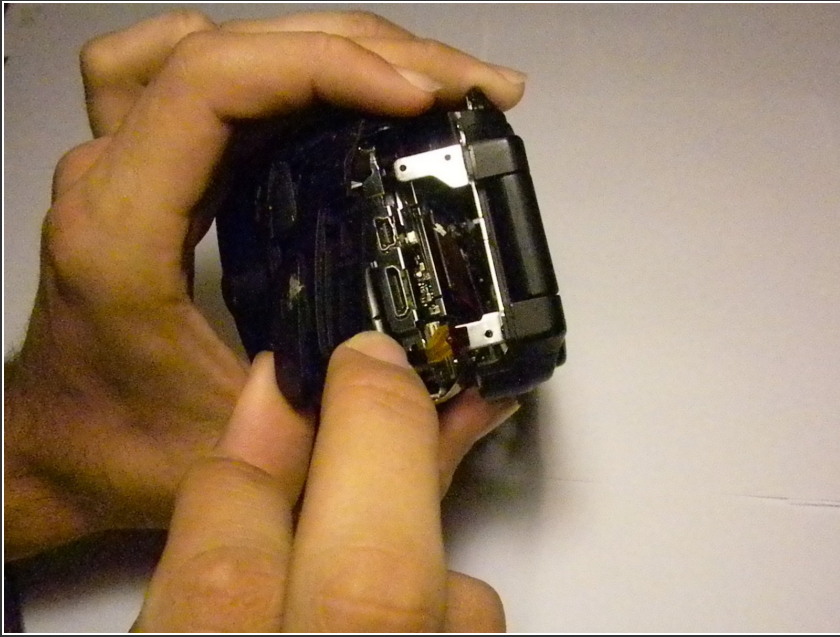
Step 8



- Slide off the right side of the camera.

! Do not completely separate the body yet. There are still wires that must be disconnected. If the body is pulled apart too quickly, it may cause damage.

Step 9

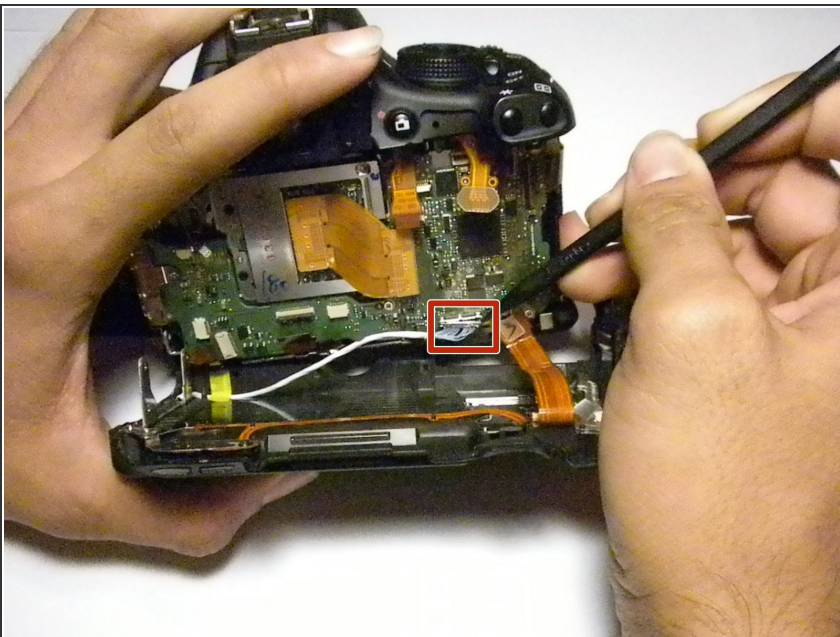


- Lift off the USB cover.

⚠ Do not completely remove the back of the camera. There are still wires that must be disconnected. Removing the back too quickly may cause damage to wires.

- ⓘ When lifting the cover, the only thing resisting your tug is the plug cover stopper. Just pull, you'll be fine.
- ⓘ When replacing it, having the covers snug on the plate will make it easier to push the whole cover on

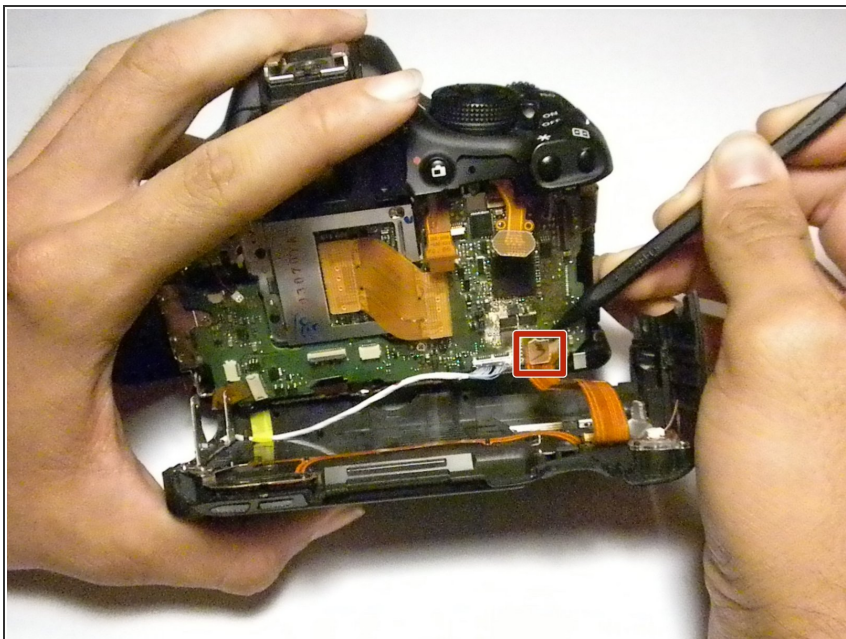
Step 10



- After separating the back, gently lift off one side of the light blue wire with the spudger until the connector is totally removed.

- ⓘ You may feel a slight resistance as you pull the top of the back cover off, it will click but that is fine.

Step 11



- With the spudger, remove the orange ribbon cable leading to the circuit board from the back of the camera.

Step 12



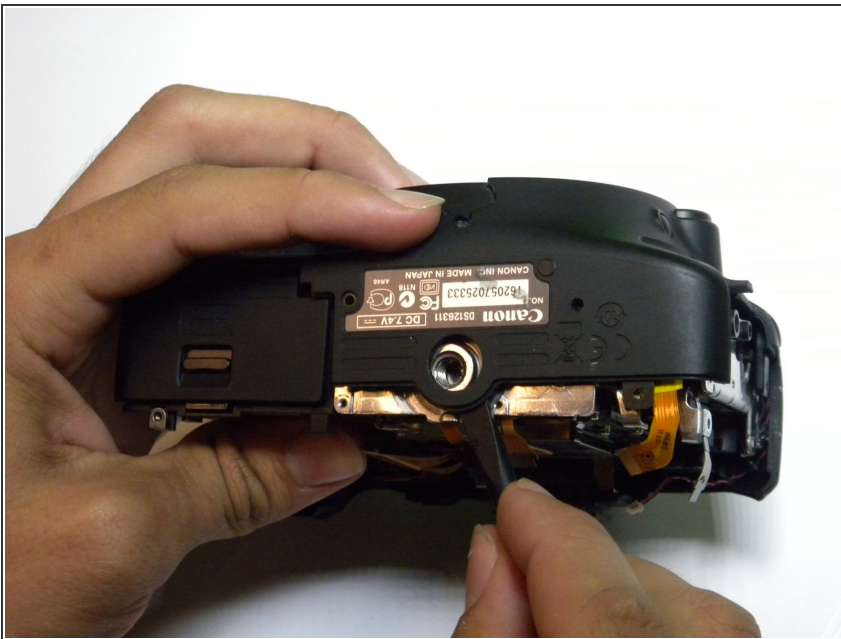
- Remove the two 6 mm Phillips #000 screws.

Step 13



- Remove the single 6 mm and two 3 mm Phillips #000 screws.

Step 14



- Use the spudger to lift the plastic under the tripod mount.

Step 15



- Lift the front cover off.

Step 16 — Top Casing



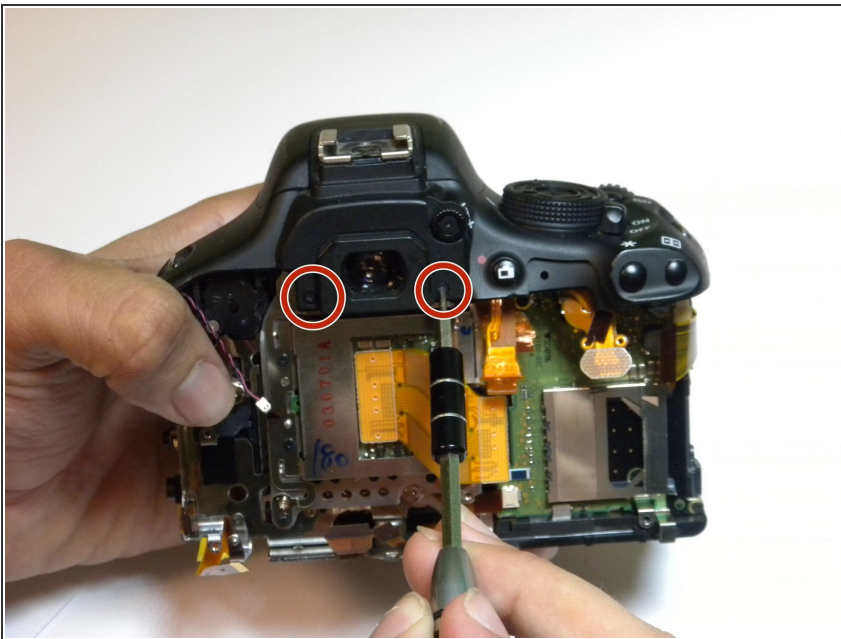
- Remove the single 4 mm Phillips #000 screw located near the strap mount.

Step 17



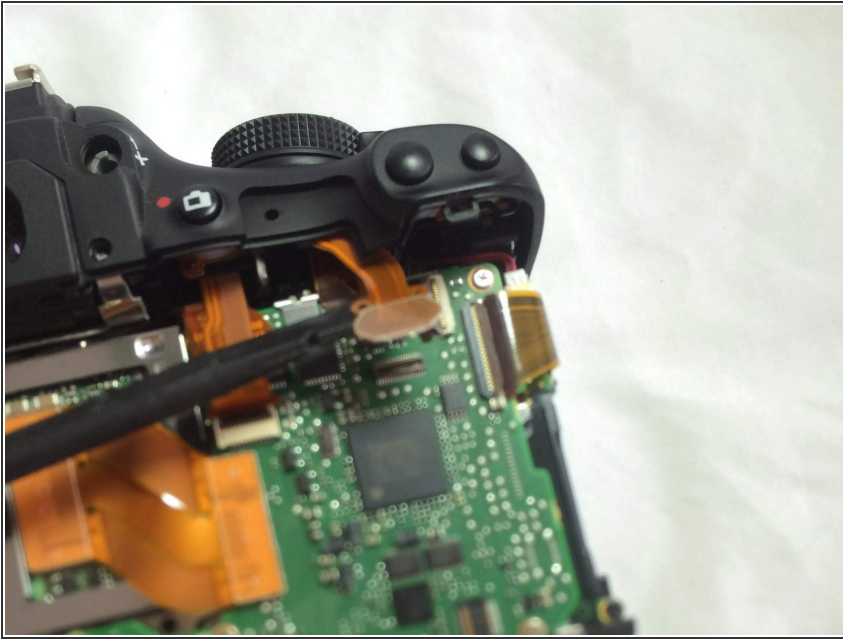
- On the opposite end of the camera, unscrew the screw next to the power switch using the same tool.

Step 18



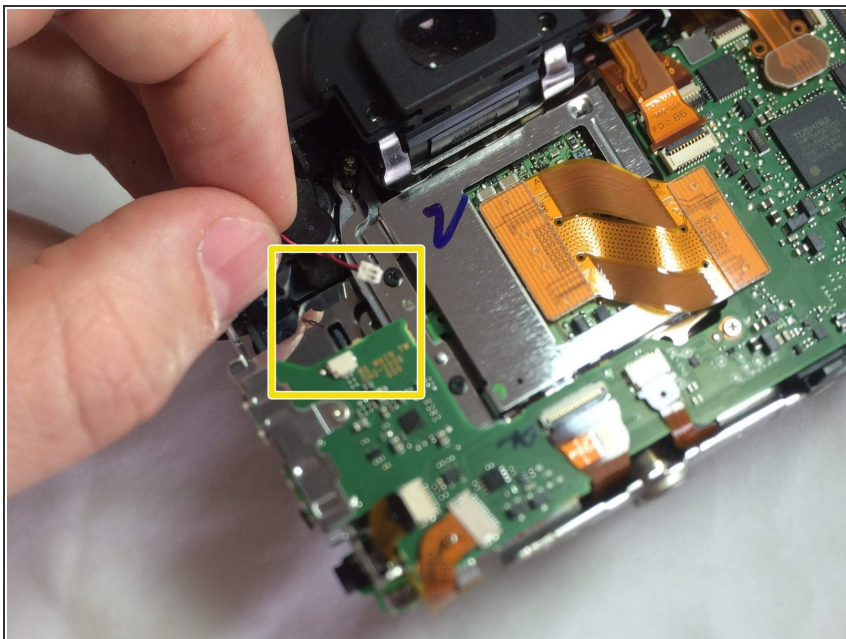
- Remove the two 5 mm Phillips #000 screws.

Step 19



- Disconnect this flat cable with a spudger

Step 20



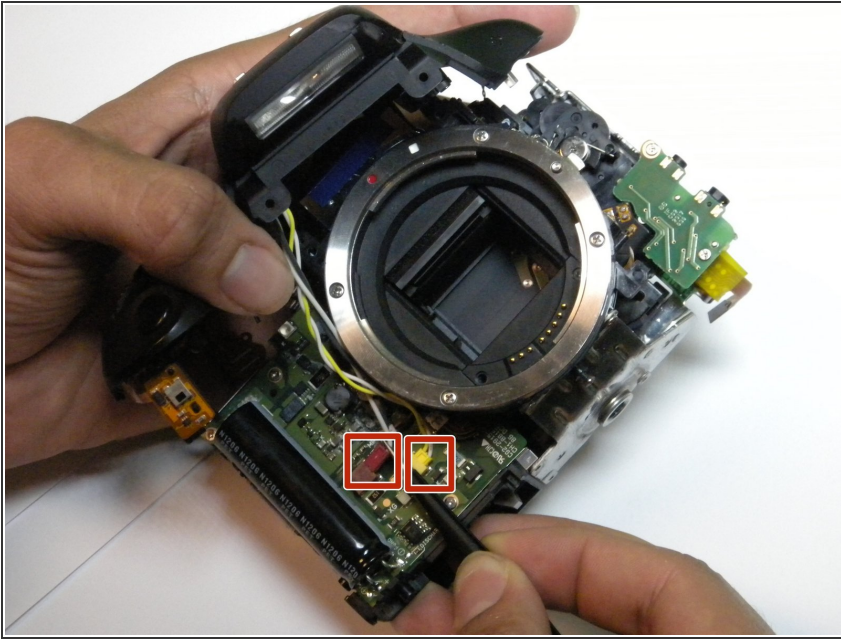
- Disconnect this tiny plug. Make sure to only pull on the white plastic. You can use a dull single-sided razor blade to pry the white plastic connector from its base.

Step 21



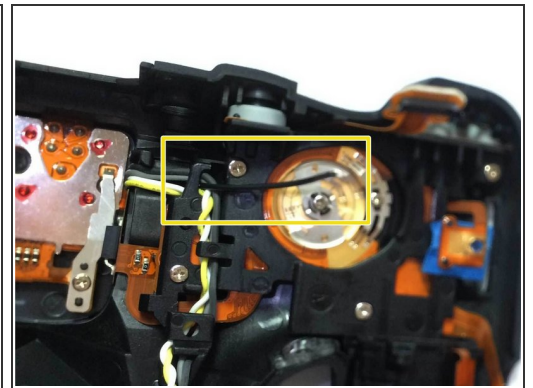
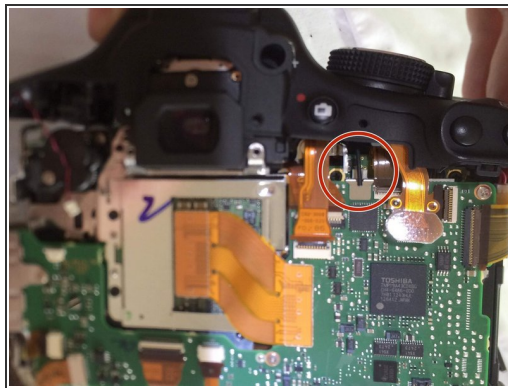
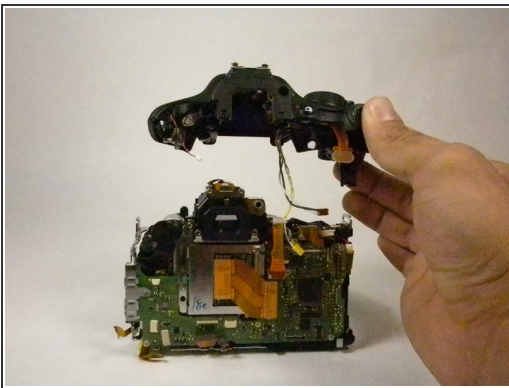
- Remove the single 11 mm Phillips #000 screw securing the dioptic adjustment knob.
- ⓘ When replacing, make sure you do not tighten the screw too much, as the knob will be locked in position if you do.
- ⚠ Before replacing the knob/screw, make sure the grey plastic mount (screw hole area) is aligned with the outer case. If it is not, it means the lens and the knob are not lined up. With a flat screw driver, give the grey plastic a few rotations, and it should fall in place, and realign properly.

Step 22



- Use the tweezers to disengage the yellow and red wires from the camera body.
- ❗ Some variations of this camera may not have unpluggable wires. Make sure to take note of which cable goes where if you decide to remove the solder.

Step 23



- Lift the top casing up and away from the camera.
- I'm not sure what this is for, but make sure the black plastic bit (not a cable) goes into the white plastic bit, as shown on the picture.
- Here is a view of the black plastic bit. It is on the underside of the top cover.

To reassemble your device, follow these instructions in reverse order.