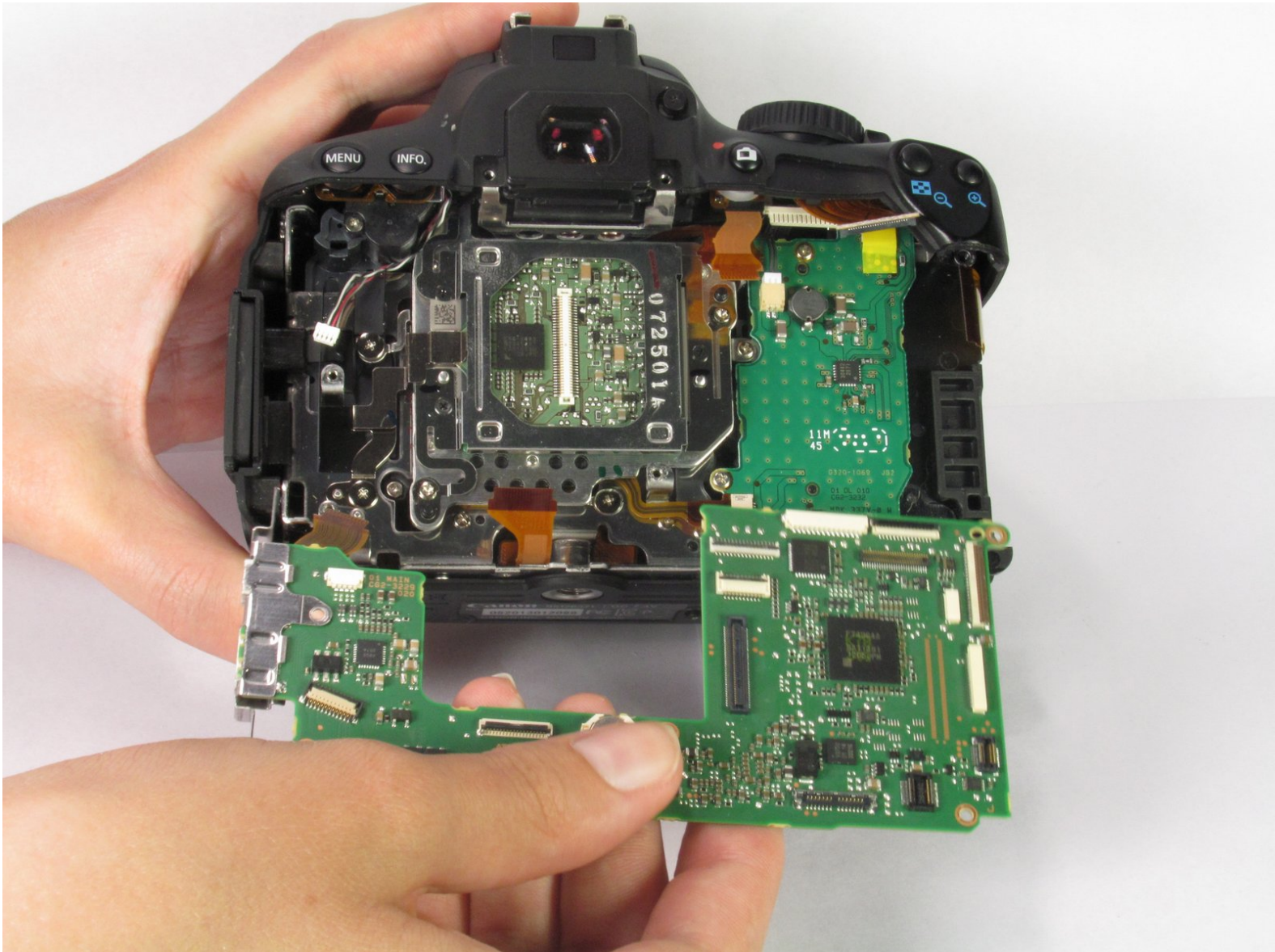




# Canon EOS Rebel T4i Motherboard Replacement

This guide will show you how to replace the motherboard on your Canon Rebel T4i.

Written By: Jordan Rabold



---

## INTRODUCTION

This guide will detail the process of replacing the motherboard. Replacing the motherboard is a more involved process and should not be done unless you are sure there is an issue with the motherboard.

---

### TOOLS:

- [iFixit Opening Tools](#) (1)
  - [T6 Torx Screwdriver](#) (1)
  - [Spudger](#) (1)
  - [Phillips #000 Screwdriver](#) (1)
-

## Step 1 — Battery



- Locate the battery cover at the bottom of the camera.
- Pull down on the black tab to open the cover.

## Step 2



- Push the grey tab on the right side of the battery.
- Remove the battery from the slot.



## Step 3 — Motherboard



- Use the spudger to pry off the rubber grip and reveal the screws.
- Unscrew the four 5.5mm Torx screws using the Torx T6 screwdriver.

## Step 4



- Pull off the plastic cover from the viewfinder.
- Unscrew the two 3.4mm Phillips screws using the Phillips #00 screwdriver.

## Step 5



- Remove the following screws from the device using the Phillips #00 screwdriver:
  - Two 3.4mm Phillips head screws.
  - Two 5.9mm Phillips head screw.

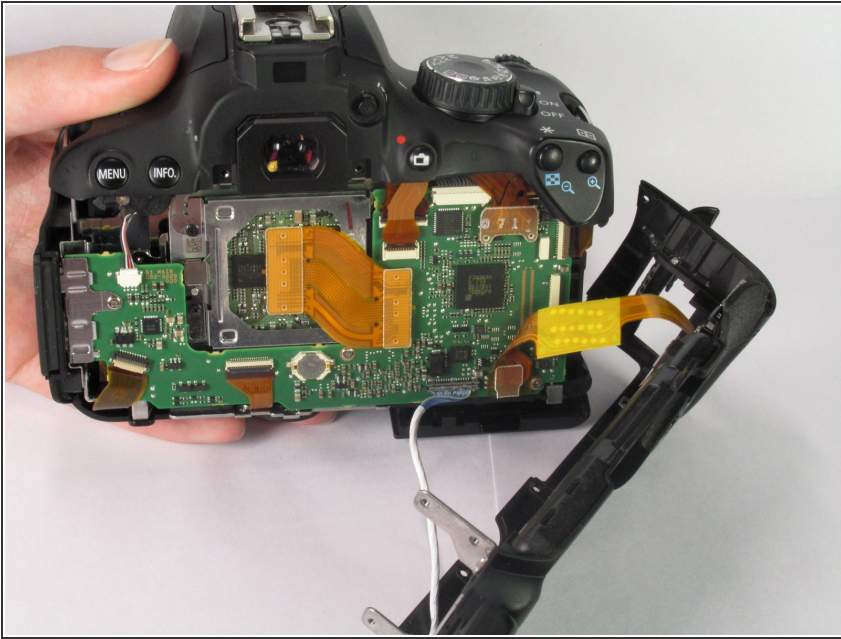
## Step 6



- Remove the following screws from the device using the Phillips #00 screwdriver:
  - One 3.4mm Phillips head screw.
  - One 5.9 mm Phillips head screw.



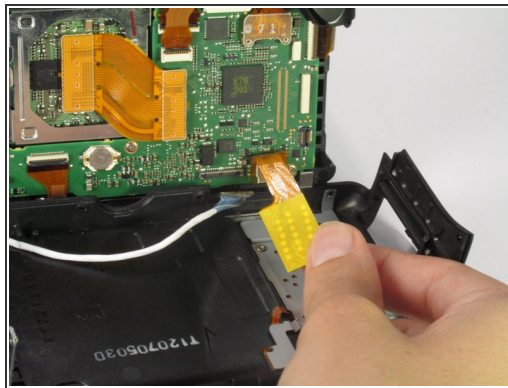
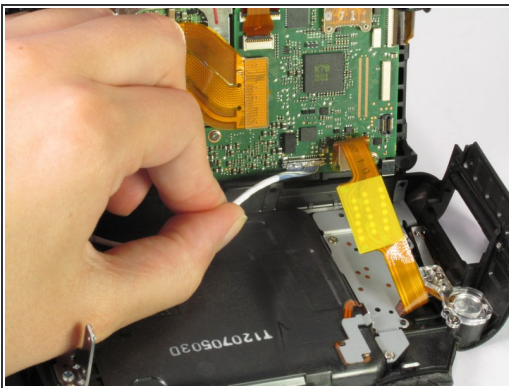
## Step 7



- Remove the rear panel from the camera.

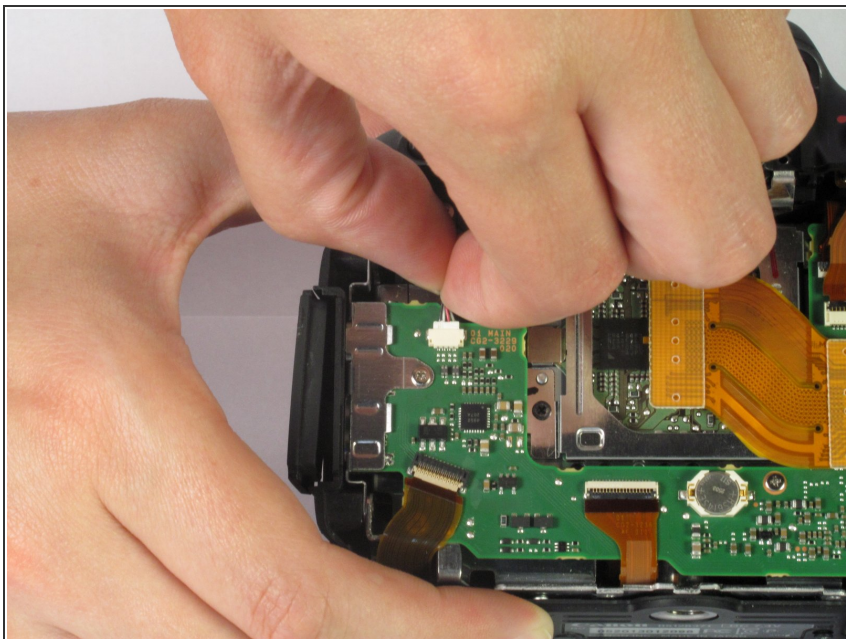
⚠ Several fragile cables are attached to the inside of the panel, so remove it gently.

## Step 8



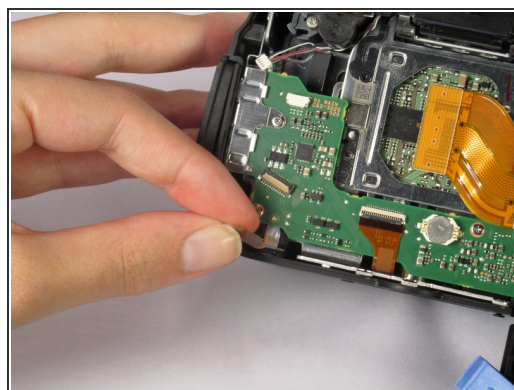
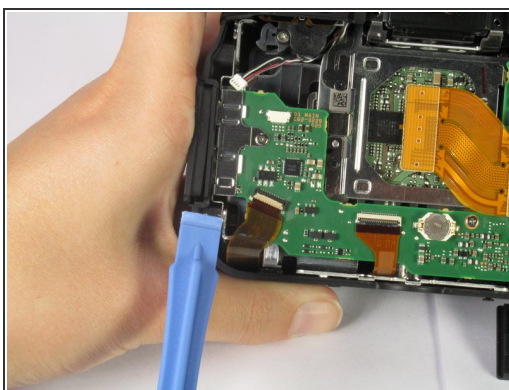
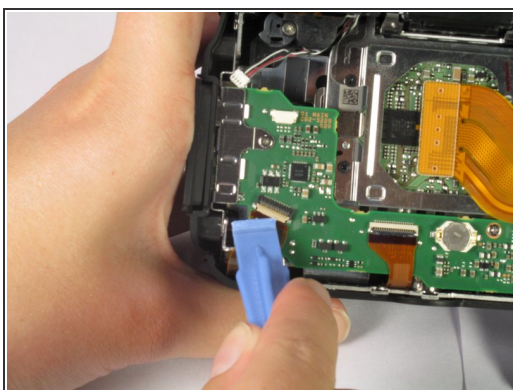
- In the lower right corner of the motherboard, detach the blue cable.
- Then detach the ribbon cable going from the motherboard to the rear panel.

## Step 9



- In the upper left corner of the motherboard, remove the small multicolored wire from the motherboard.

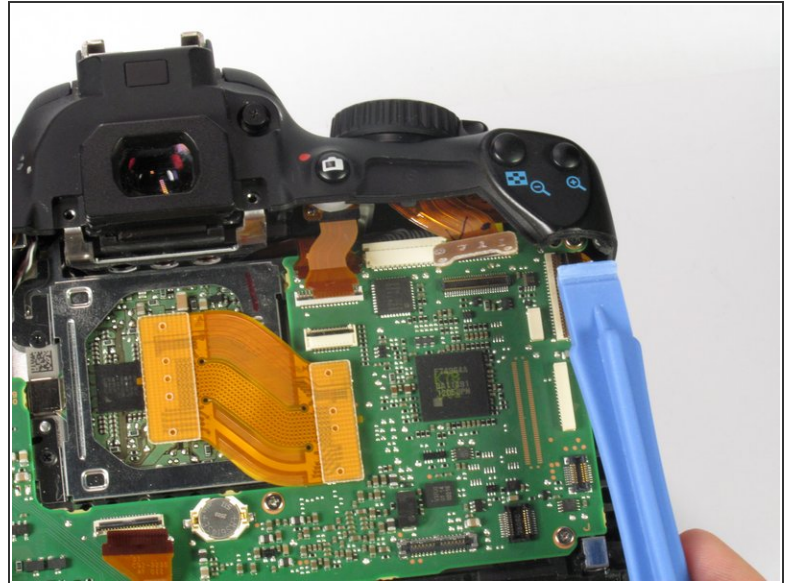
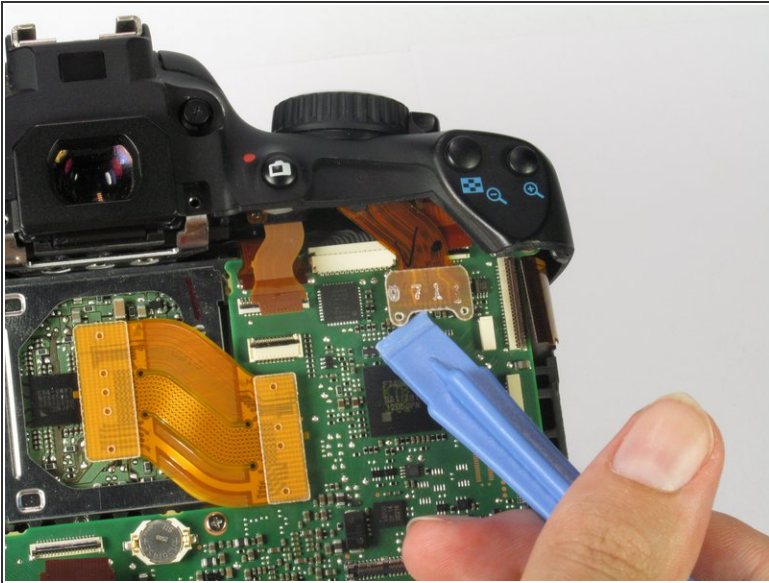
## Step 10



- Use the plastic opening tool to flip up ribbon cable connector.
- Gently disconnect the ribbon cable by pulling it away from the motherboard.

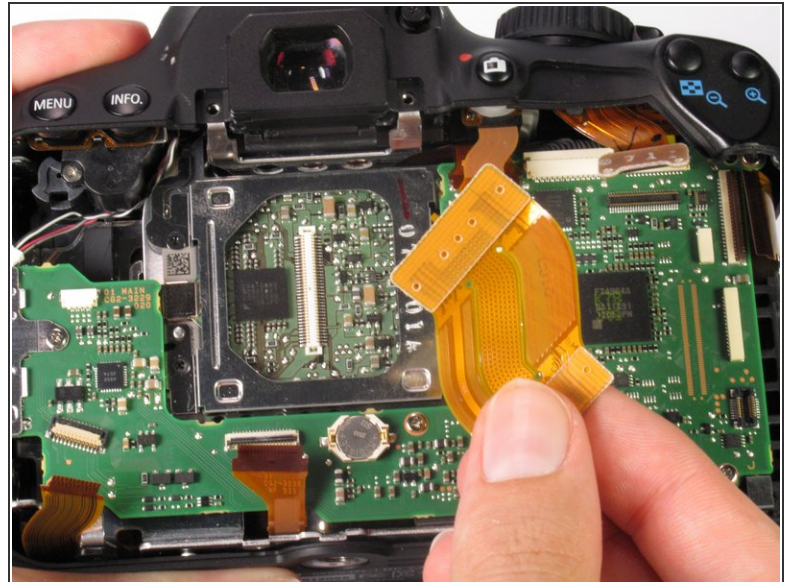
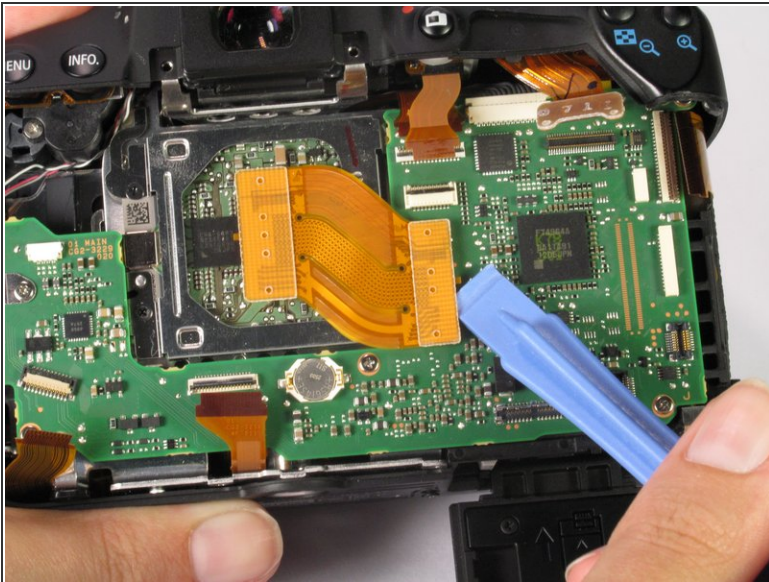


## Step 11



- In the upper right corner of the motherboard, use the plastic opening tool to remove the clear cable connector from the motherboard.

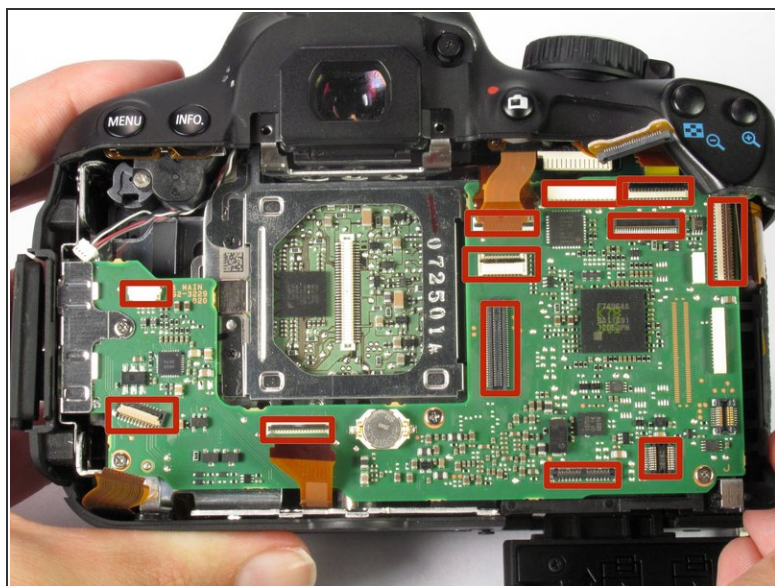
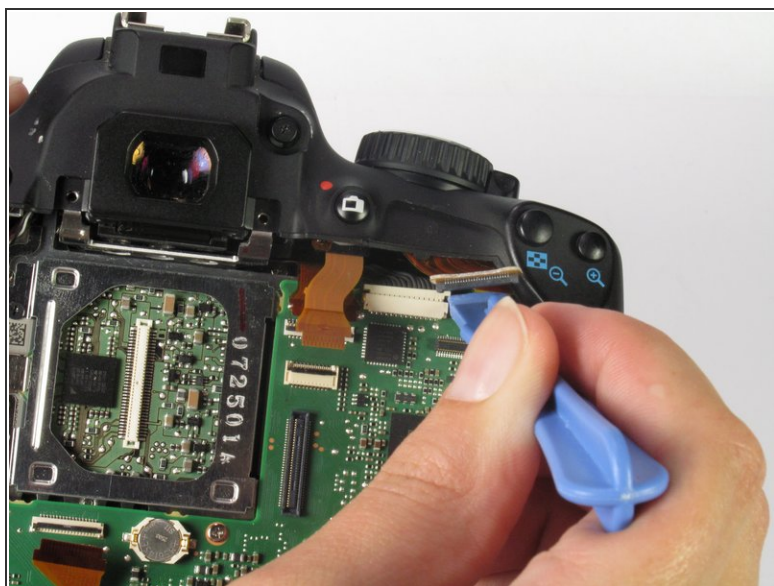
## Step 12



- Use the plastic opening tool to remove the ribbon cable connecting the image sensor to the motherboard.

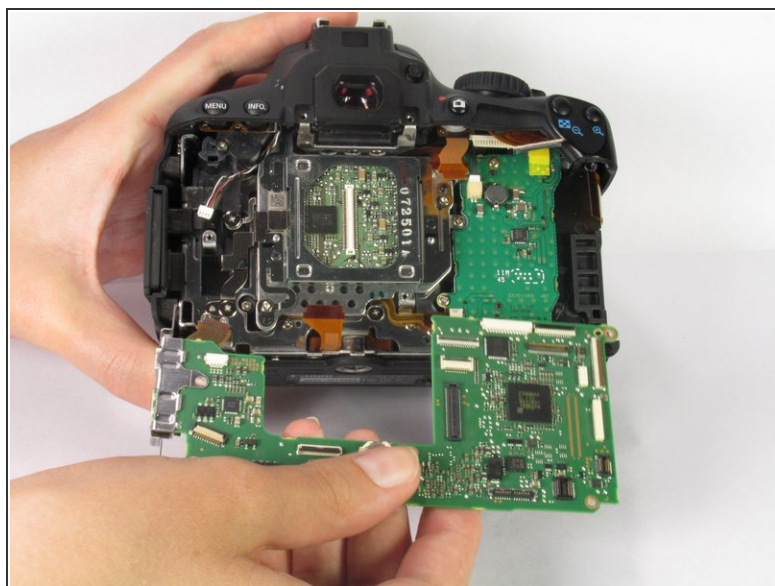
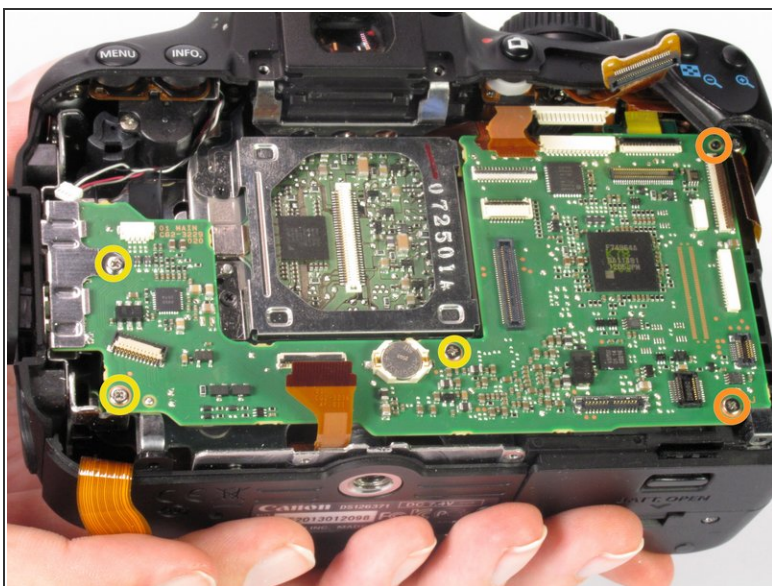


## Step 13



- Use the plastic opening tool to push on the indents of the plastic header to disconnect from the motherboard.
- Make sure all cables are disconnected from the motherboard.

## Step 14



- Remove the following screws from the motherboard using the Phillips #00 screwdriver:
  - Two 3.9mm Phillips head screws.
  - Three 2.9mm Phillips head screws
- Gently pull the motherboard out of the camera.

To reassemble your device, follow these instructions in reverse order.