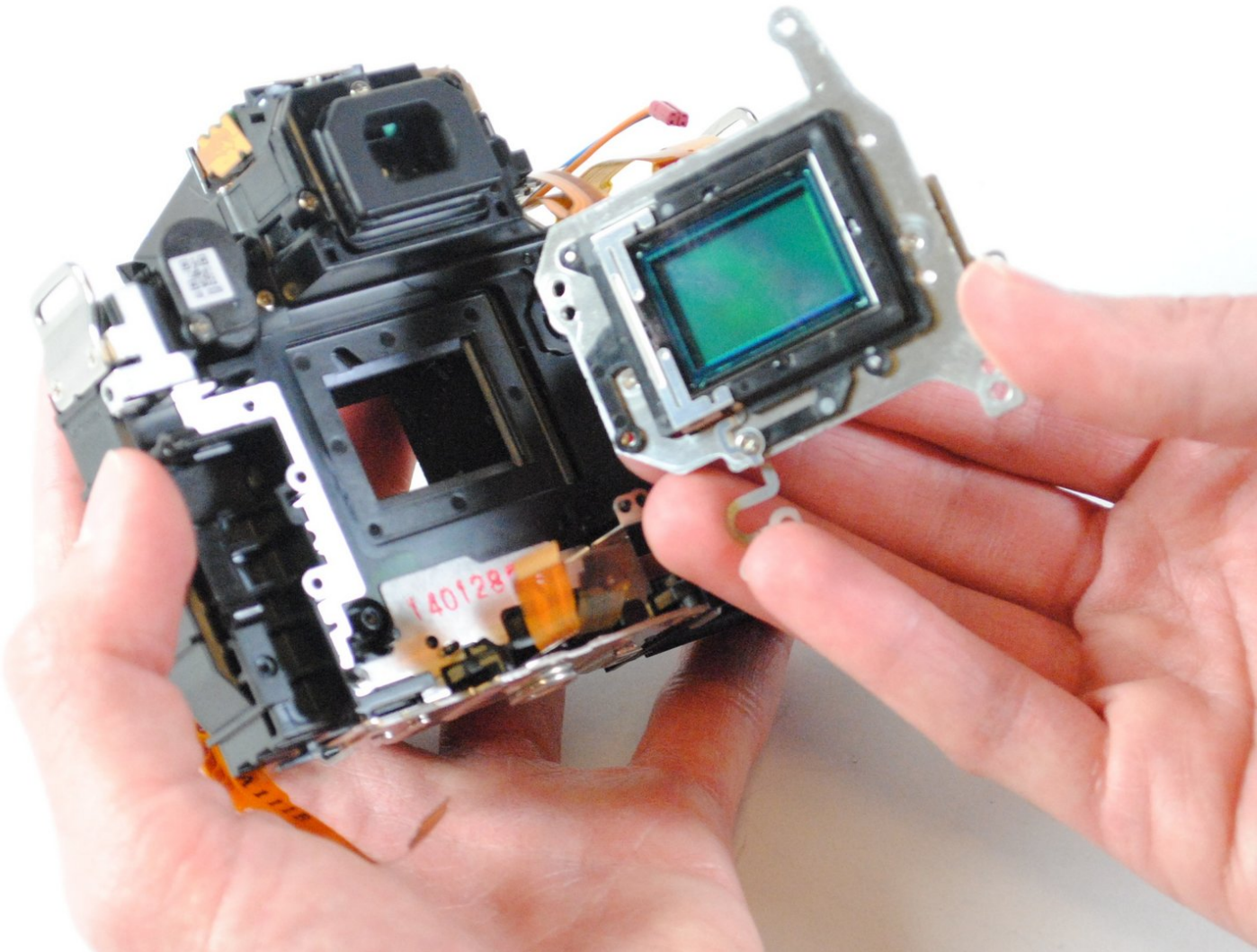




# Canon EOS Rebel T5 Image Sensor Replacement

This guide will show the reader how to remove and replace the image sensor for their Canon EOS Rebel T5 camera.

Written By: Tyler Brown



---

# INTRODUCTION

If you find that your camera needs a new image sensor, this guide will show you how to replace it.

---



## TOOLS:

- [Phillips #000 Screwdriver](#) (1)
  - [Fingers](#) (1)
  - [Spudger](#) (1)
-

## Step 1 — Battery



- Lay the camera on its back so that the card/battery door is facing you.
- Using your fingernail, slide the tab on the battery door up to release the battery door latch.

## Step 2



- Lift the now free card/battery door to reveal the battery compartment.
- Push the gray lever to the right side so that the battery can be removed and replaced with a new one.

### Step 3 — Back Panel



- Turn the camera so that the back is facing to your right.
- Remove the 5mm Phillips #000 screw above the rubber USB port cover.

### Step 4



- Remove the rubber piece.
- Unscrew the two screws under the rubber cover to completely remove the rubber cover piece.
- ⓘ It is held in place by a notched tether, but can be easily manipulated to slide out.



## Step 5



- Turn your camera so that the bottom is facing you.
- Remove the 5mm Phillips #000 screws.

## Step 6



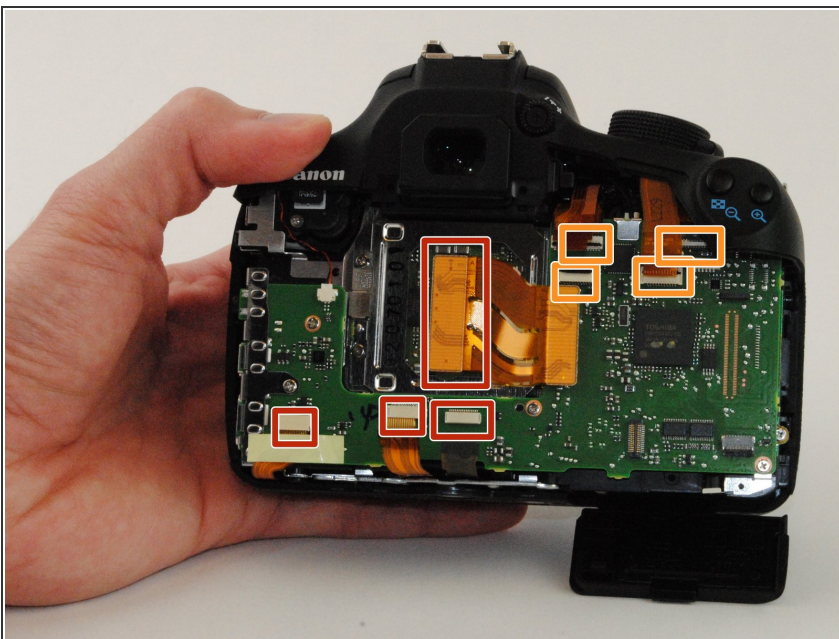
- Now turn the camera so that the front is facing towards your right.
- Remove the two remaining 5mm Phillips #000 screws.

## Step 7



- Now that all of the exterior screws have been removed, grip the camera firmly on both sides.
- Gently pry the back panel from the main body of the camera.
- ⚠ There are two ribbon cables that need to be removed in order for the back panel to come free from the camera body, as indicated.
- ⓘ This back panel contains various control components of the camera as well as the LCD screen.

## Step 8 — Motherboard



- Remove all ribbon cables with the plastic spudger.
- Gently pry up the black plastic tabs to slide out the ribbon cables

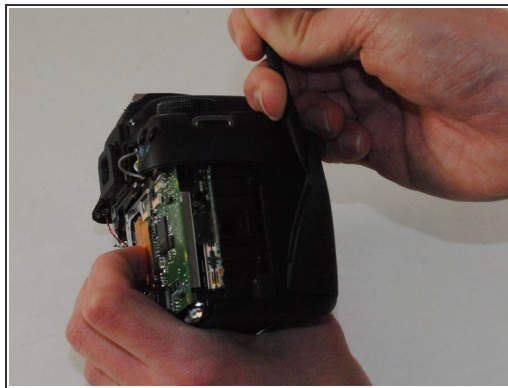


## Step 9



- Turn your camera so that the top is facing you.
- Remove the two black 5 mm Phillips #000 screws.

## Step 10



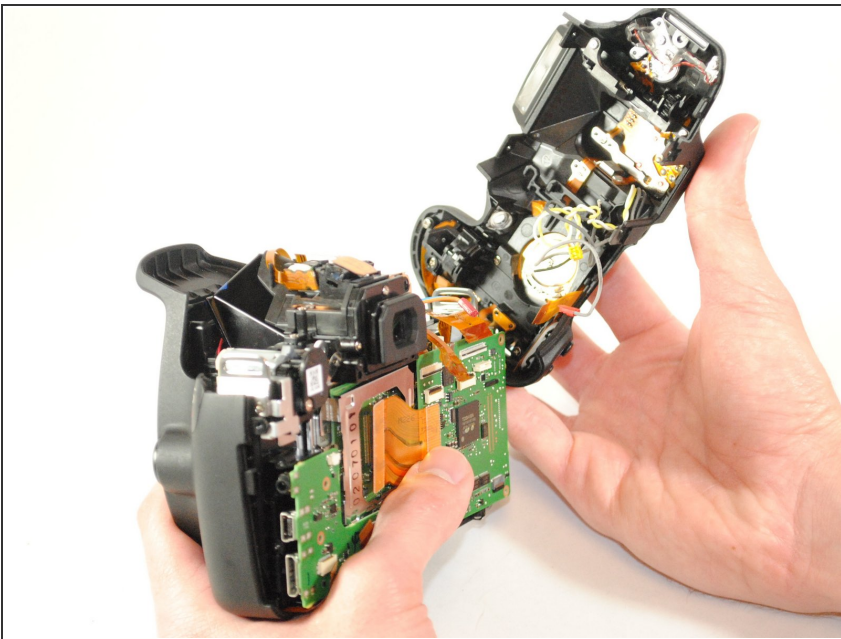
- Turn the grip side toward you.
- Remove the rubber grip, using the plastic spudger.

## Step 11



- Remove the black 5 mm Phillips #000 screw, located under the grip.

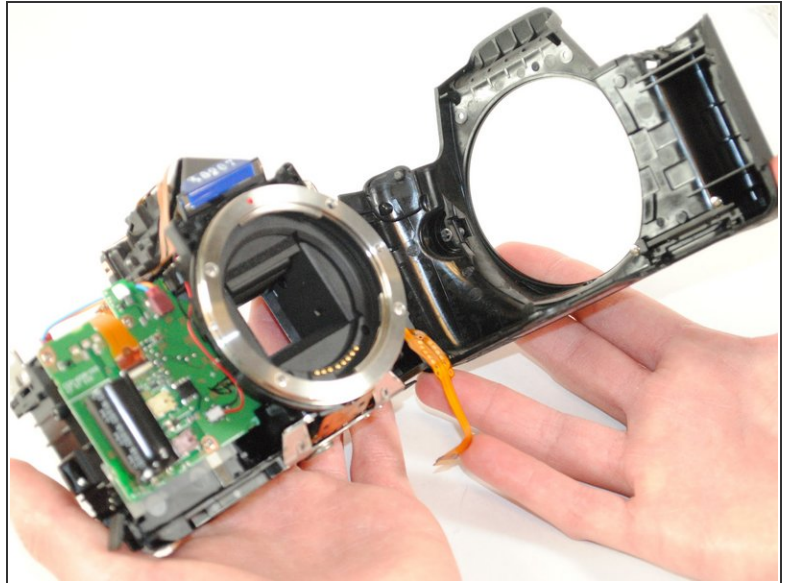
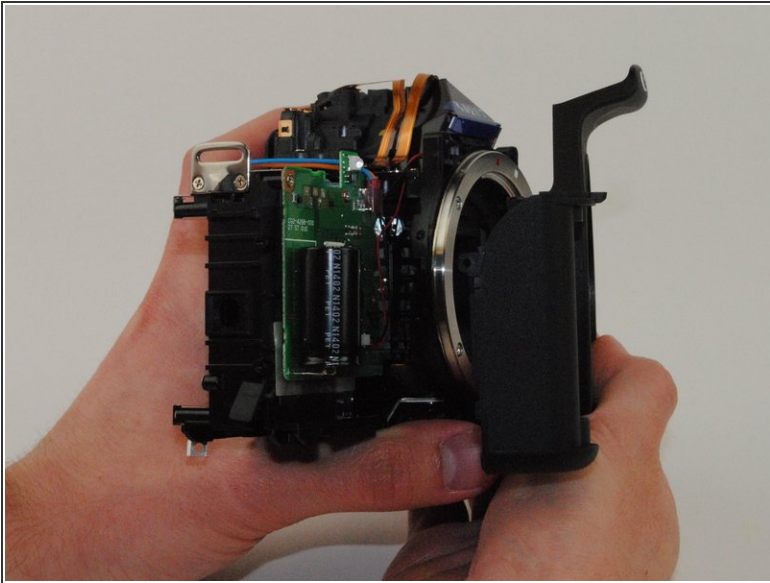
## Step 12



- Remove the top panel of the device.

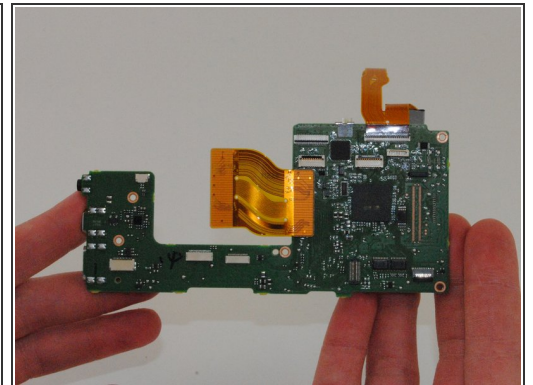
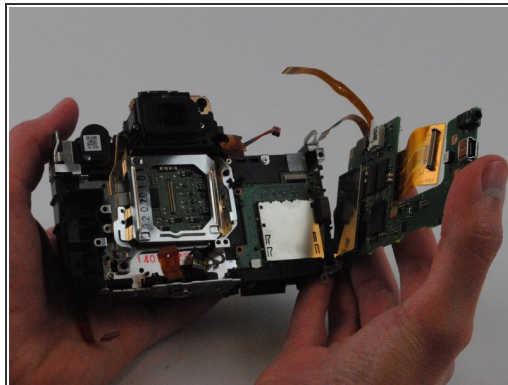
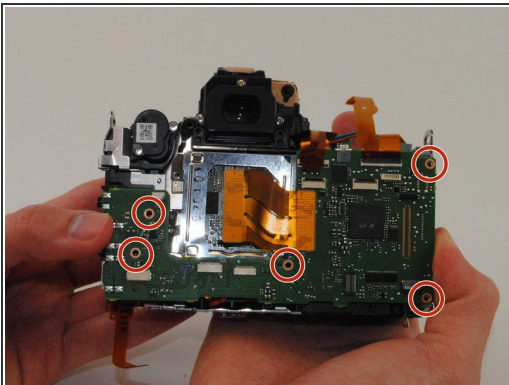


## Step 13



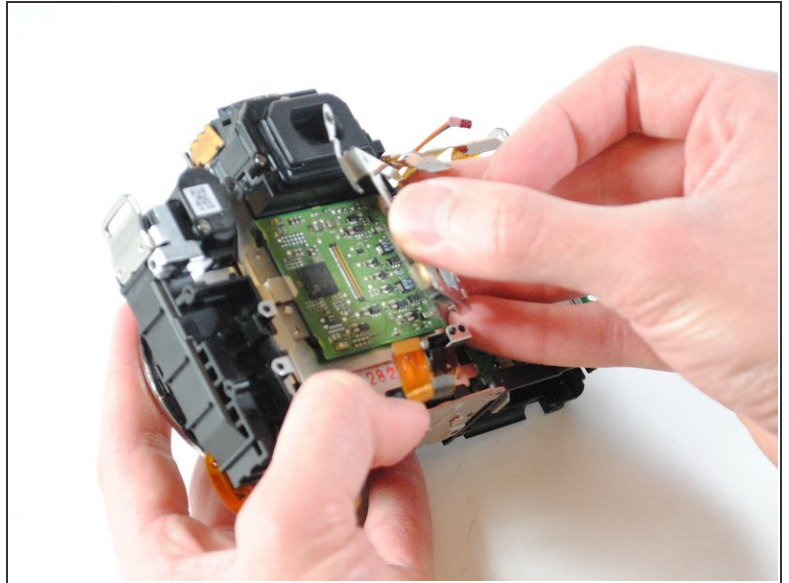
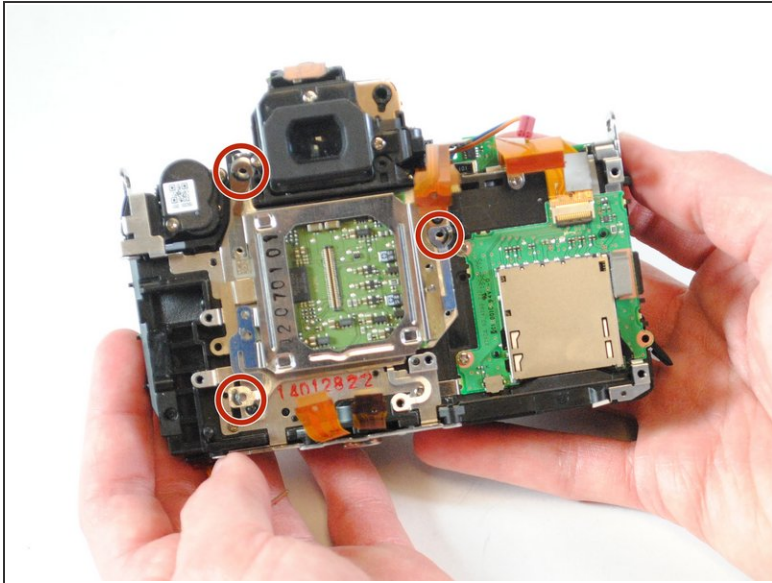
- Remove the front panel of the camera.

## Step 14



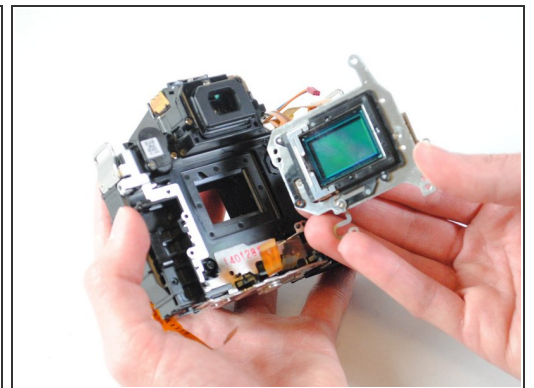
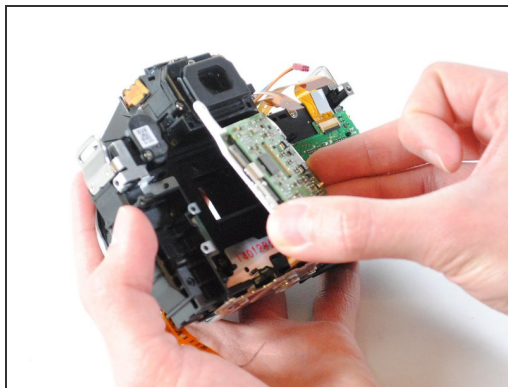
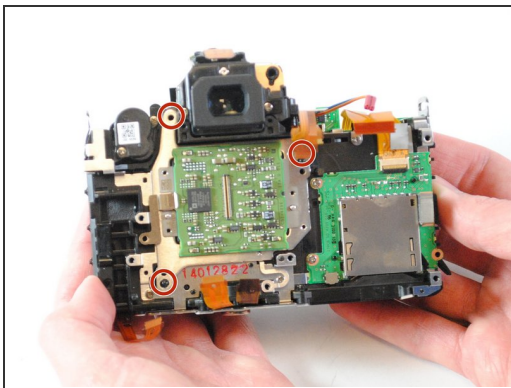
- Remove the five silver 5mm Phillips #000 screws.
- The motherboard can now be removed.

## Step 15 — Image Sensor



- Remove the three silver 3mm Philips #000 screws from the image sensor holder.
- Remove the image sensor holder.

## Step 16



- Remove the three remaining silver 3mm Philips #000 screws from the image sensor.
- ⚠ Be careful not lose the springs underneath the screws on the image sensor
- Using your fingers, lift the image sensor from the device.

To reassemble your device, follow these instructions in reverse order.

