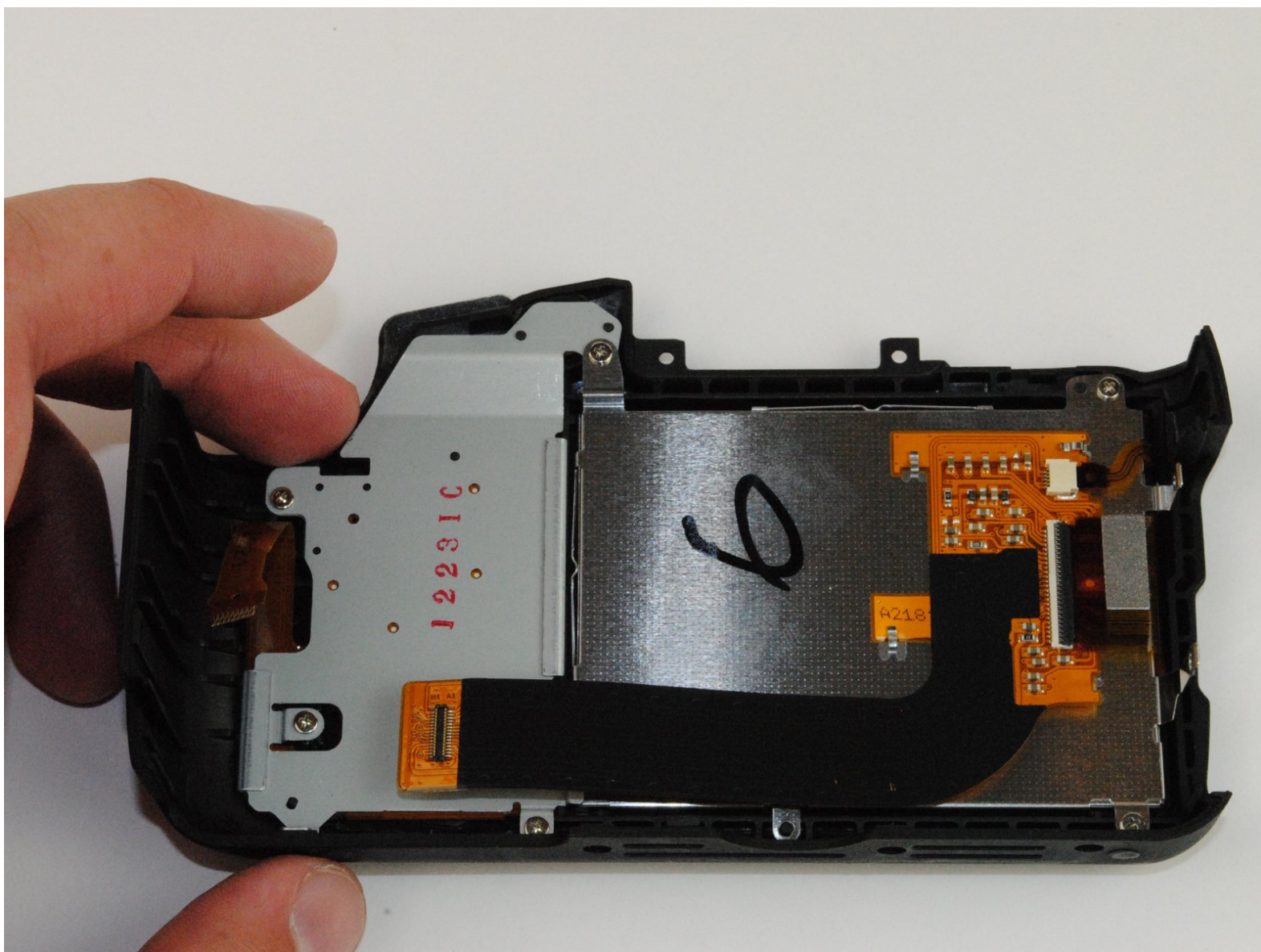




Canon EOS Rebel T5 LCD Screen Replacement

This guide will show the reader how to remove and replace the LCD screen for their Canon EOS Rebel T5 camera.

Written By: Austin Tucker



INTRODUCTION

If the display on your camera has stopped working or is cracked and otherwise not functional, it will need to be replaced. This guide will show you how.



TOOLS:

- [Phillips #000 Screwdriver](#) (1)
 - [Fingers](#) (1)
-

Step 1 — Battery



- Lay the camera on its back so that the card/battery door is facing you.
- Using your fingernail, slide the tab on the battery door up to release the battery door latch.

Step 2



- Lift the now free card/battery door to reveal the battery compartment.
- Push the gray lever to the right side so that the battery can be removed and replaced with a new one.

Step 3 — Back Panel



- Turn the camera so that the back is facing to your right.
- Remove the 5mm Phillips #000 screw above the rubber USB port cover.

Step 4



- Remove the rubber piece.
- Unscrew the two screws under the rubber cover to completely remove the rubber cover piece.
- ⓘ It is held in place by a notched tether, but can be easily manipulated to slide out.

Step 5



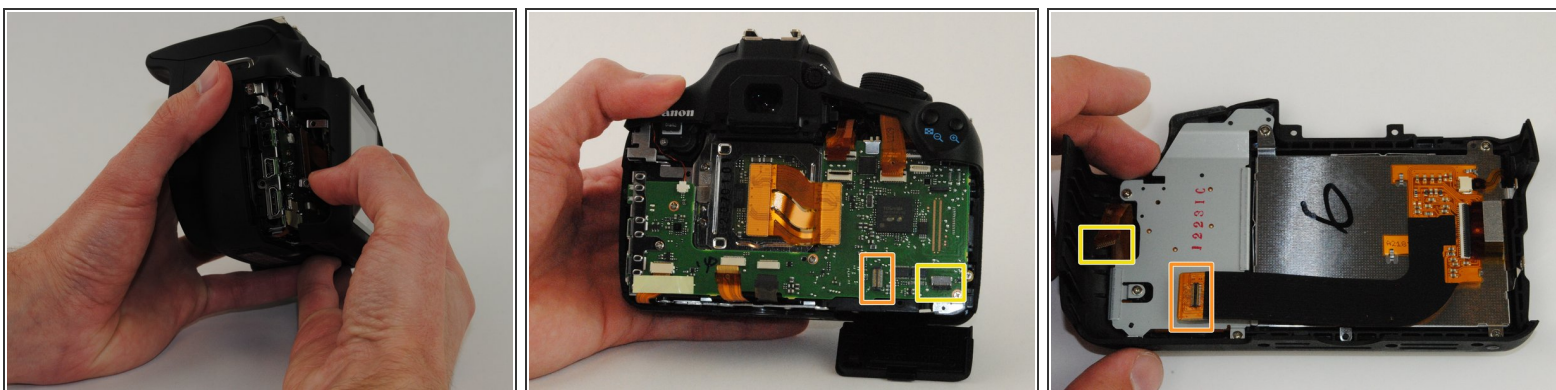
- Turn your camera so that the bottom is facing you.
- Remove the 5mm Phillips #000 screws.

Step 6



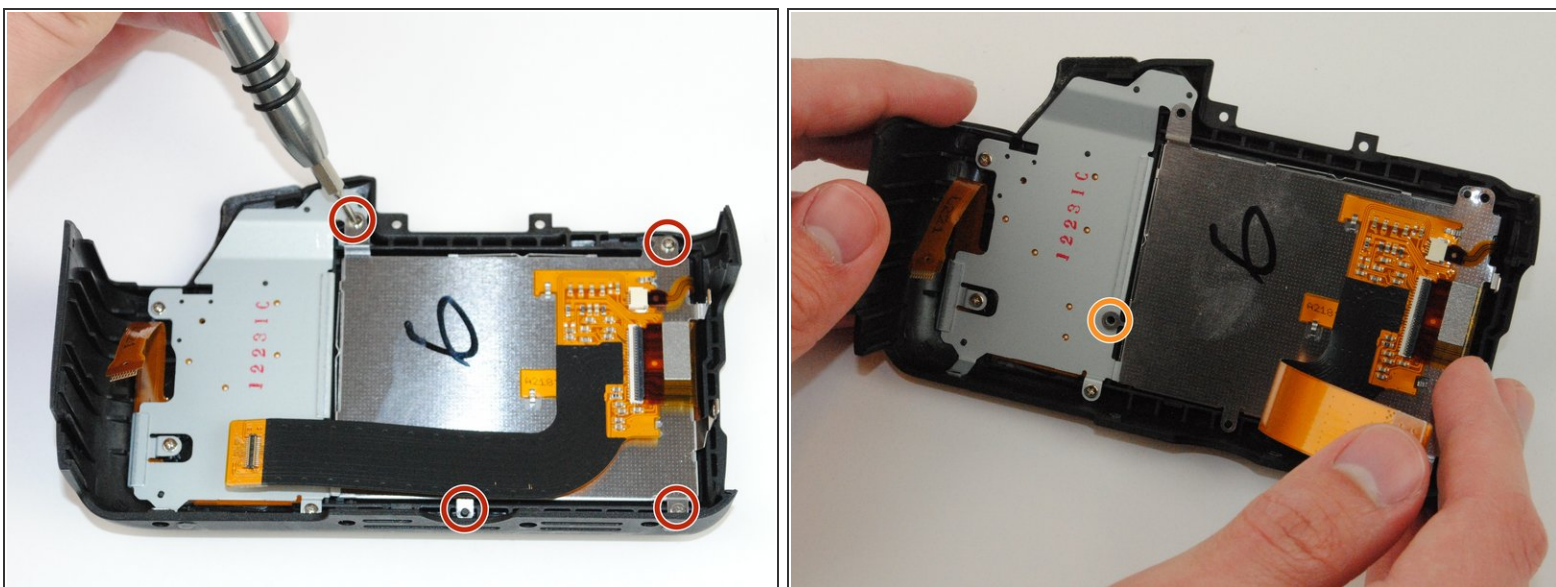
- Now turn the camera so that the front is facing towards your right.
- Remove the two remaining 5mm Phillips #000 screws.

Step 7



- Now that all of the exterior screws have been removed, grip the camera firmly on both sides.
- Gently pry the back panel from the main body of the camera.
- ⚠ There are two ribbon cables that need to be removed in order for the back panel to come free from the camera body, as indicated.
- ⓘ This back panel contains various control components of the camera as well as the LCD screen.

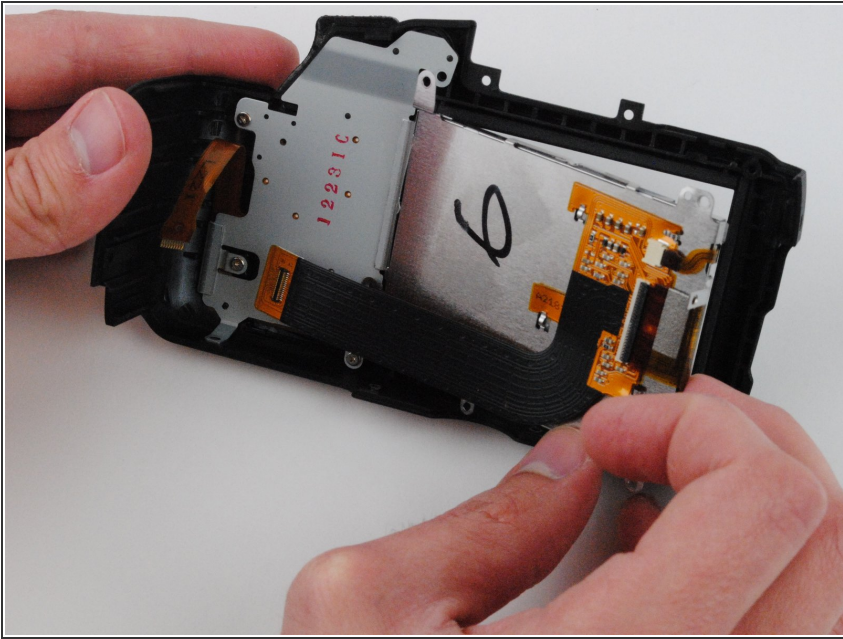
Step 8 — LCD Screen



- Remove the four silver 4mm Phillips #000 screws connecting the LCD screen to the back of the camera.
- Be sure to lift the ribbon cable to remove the remaining hidden black 4mm Phillips #000 screw.

This document was generated on 2019-09-30 03:20:32 PM (MST).

Step 9



- The LCD screen can now be lifted from the right side to be replaced.

To reassemble your device, follow these instructions in reverse order.