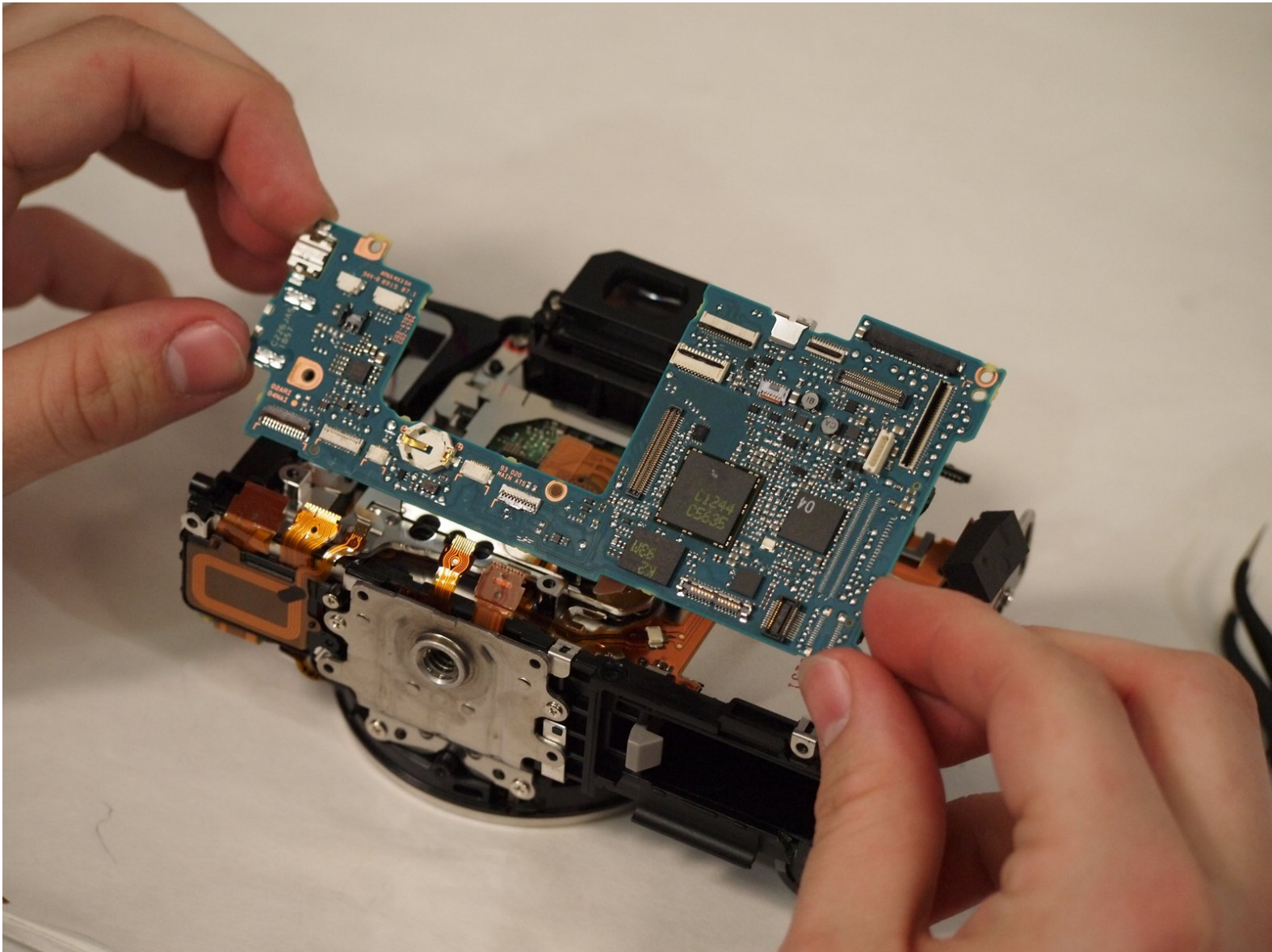




Canon EOS Rebel T6i Motherboard Replacement

This guide will show how to get to and replace the motherboard.

Written By: Shane Riding



INTRODUCTION

This guide will show how to get to and replace the motherboard.



TOOLS:

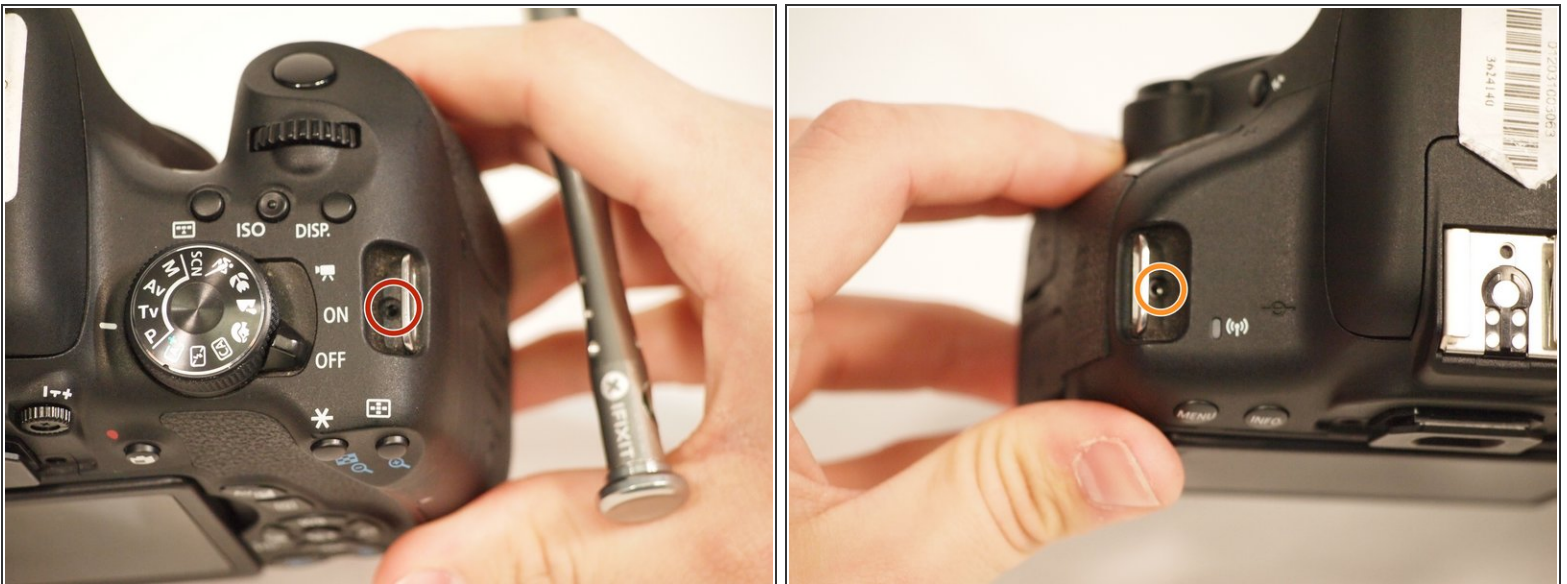
- [JIS #000 Screwdriver](#) (1)
 - [iFixit Opening Tools](#) (1)
 - [Tweezers](#) (1)
 - [Metal Spudger](#) (1)
 - [Spudger](#) (1)
-

Step 1 — Flash Assembly



- Remove all visible exterior screws:
 - Two 6.84 mm screws on the right side
 - Six 5.33 mm screws

Step 2



- One 5.91 mm screw on the top right.
- One 3.39 mm screw on the top left.

Step 3

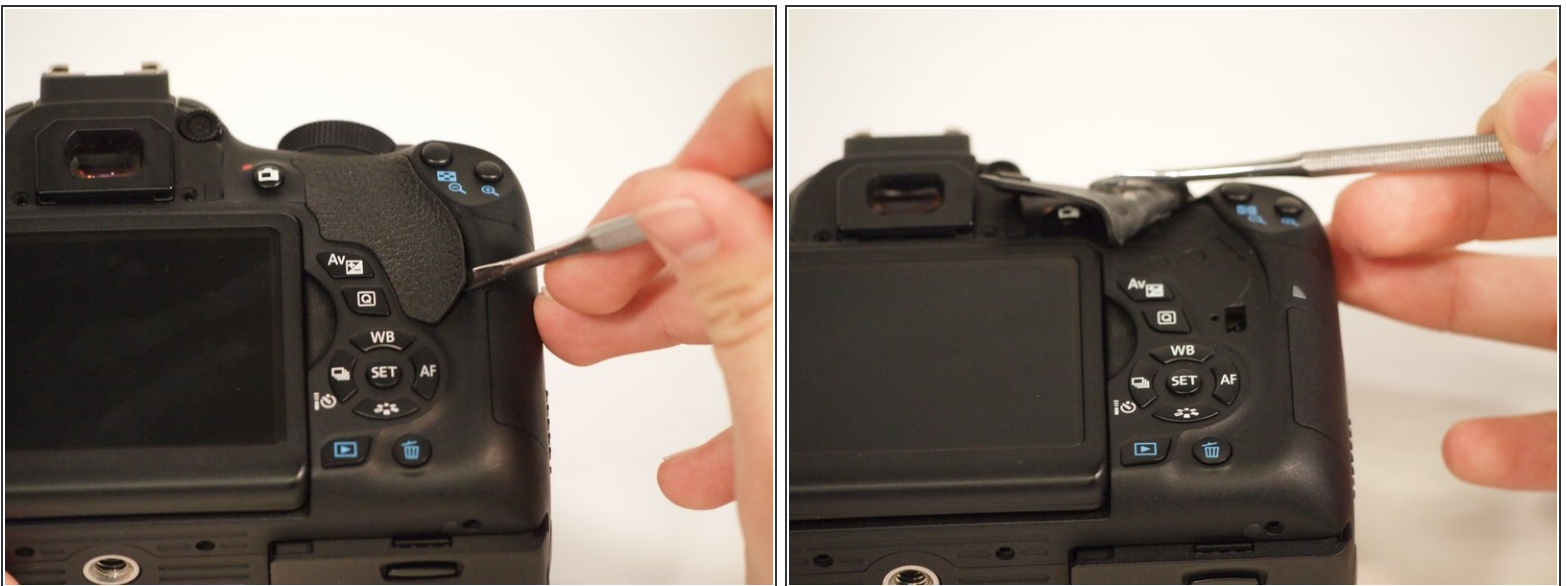


- Locate the rubber grip on the left side of the camera. Using a metal spudger, pry the rubber grip off of the casing.

⚠ Be careful not to rip the rubber with the metal spudger.

- Remove the five silver screws underneath the grip.
 - One 5.83mm silver DL Flap
 - Four 5.85mm silver under flap

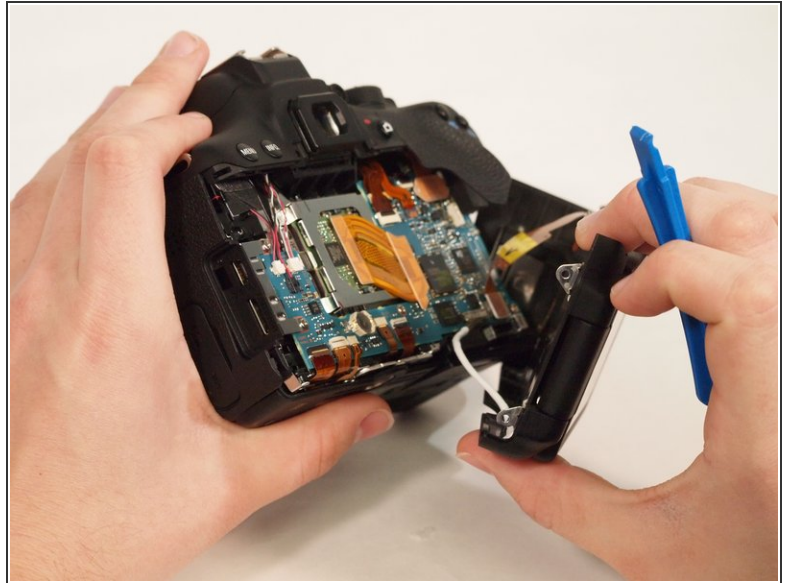
Step 4




- Using the same metal spudger as before, pry the rubber grip located just below the viewfinder. Again, be careful not to rip the rubber.

This document was generated on 2020-04-03 07:39:39 PM (MST).

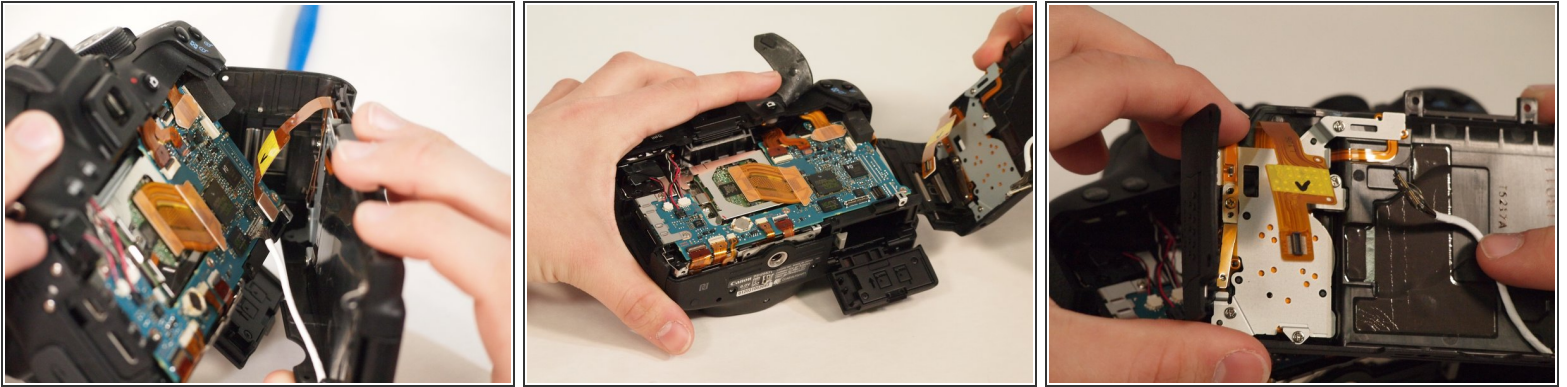
Step 5



- Carefully use the plastic opening tool to pry the casing apart along the seam.
- Follow the seam with the plastic tool until the back is ready to remove.

 Before you move on, make sure you use the grounding strip to remove the chance of discharging static electricity into the internal components.

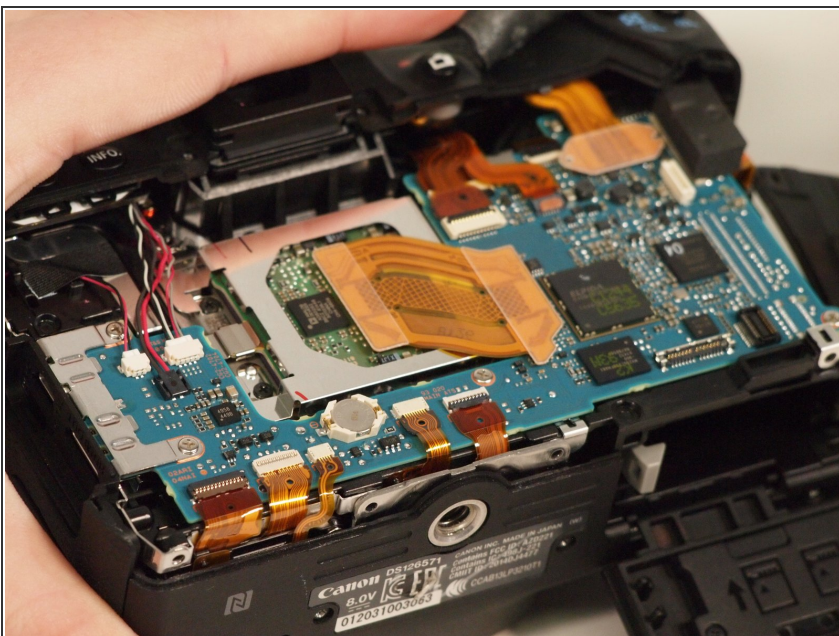
Step 6



i Notice the two connections attaching the back of the camera to the motherboard.

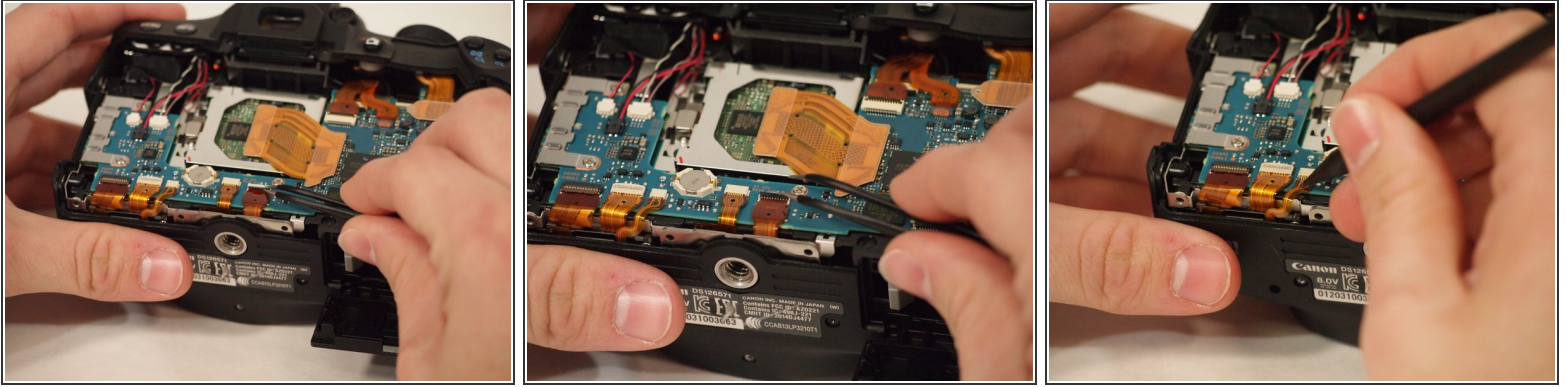
- To disconnect the white wire, pinch the wire casing and pull directly out from the camera. It will take a very small amount of elbow grease. However, do not force or pry it.
- To disconnect the ribbon connector, softly pull the back away from the motherboard. It should come undone with little force.
- Once removed, set the back in a safe place.

Step 7



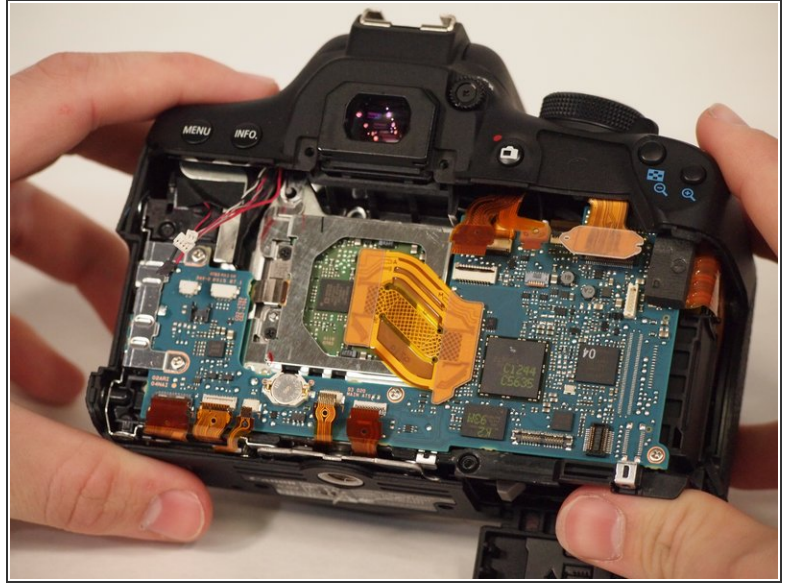
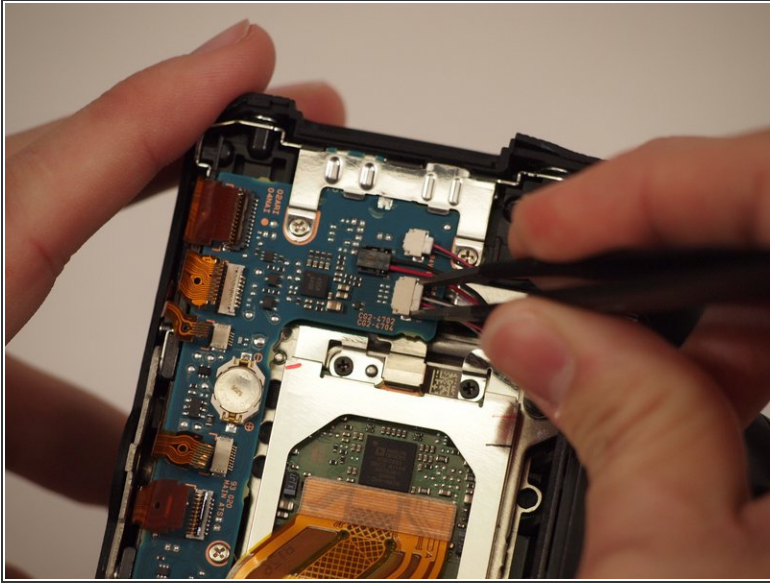
- Now to remove all of the bottom ribbon connectors.

Step 8



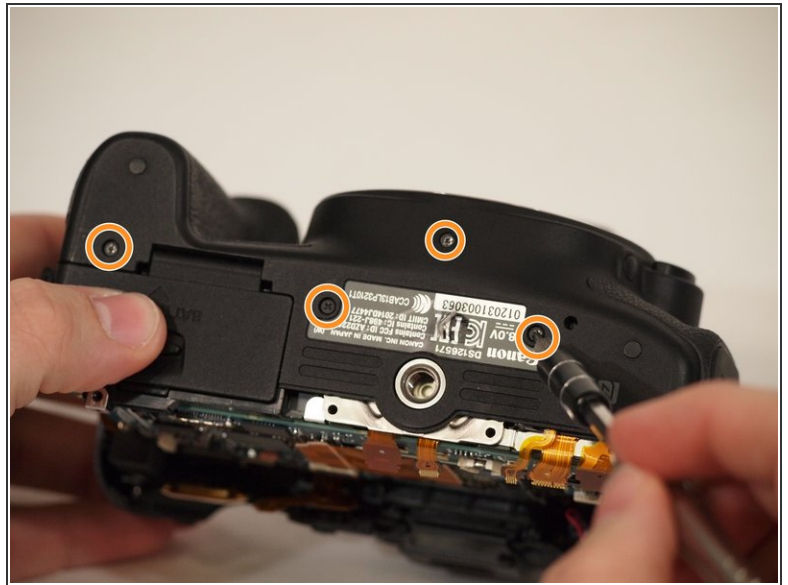
- To remove the Ribbon connectors that have a locking mechanism, identify the flap on the ribbon connector. Use either needle nose tweezers, or a plastic wedge to flip the small flap to the "up" position.
 - Once the flap is up, use the plastic spudger to pull the ribbon connector out of the connection using the hole in the center of the ribbon.
- i** Now is a good time to remove the small backup battery from the motherboard.

Step 9



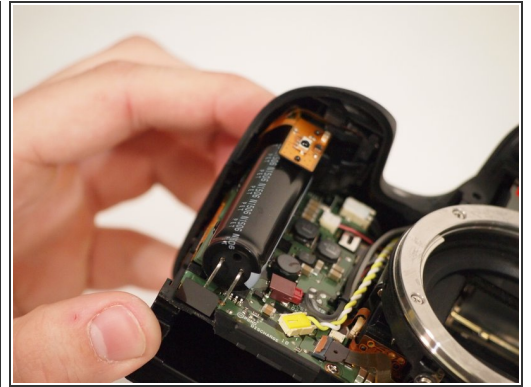
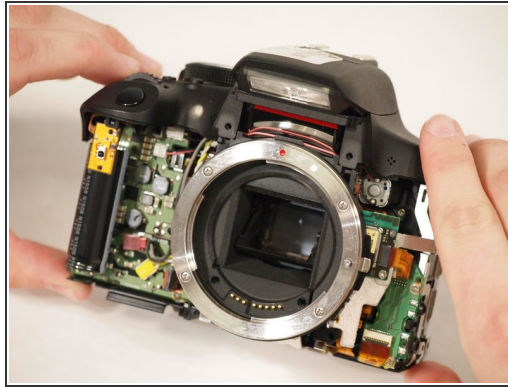
- Disconnect the small plastic connectors on the top left corner of the motherboard by gripping the small plastic portion of the wire and gently pulling out of the connector.
- Go ahead and disconnect all of the ribbon connectors along the top that you can get to. Don't worry about the connectors underneath or the ribbon connectors with the foam block, as these will be removed later.

Step 10



- Now its time to remove the rest of the casing.
- Remove the four crews from the front of the camera. There are two screws above the lens mount and two screws inside the lens mount.
- Remove the four screws left on the bottom.
- Now the front is ready to be removed.

Step 11

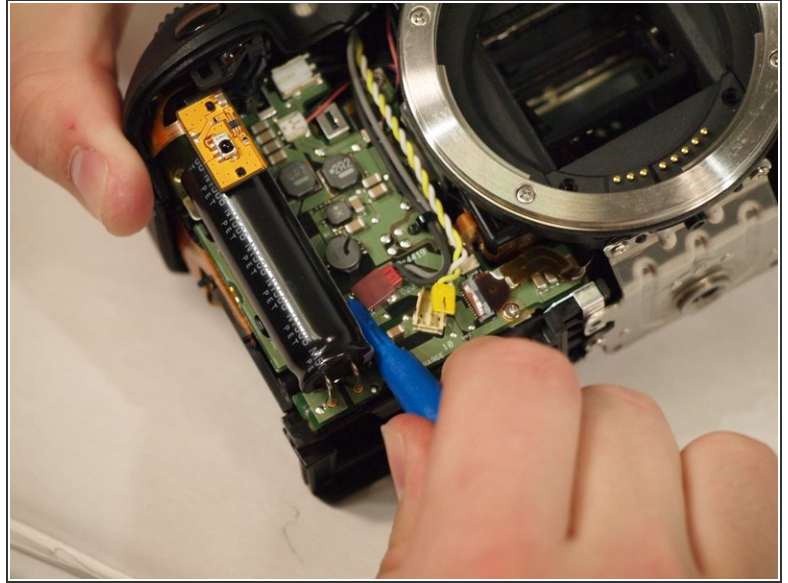
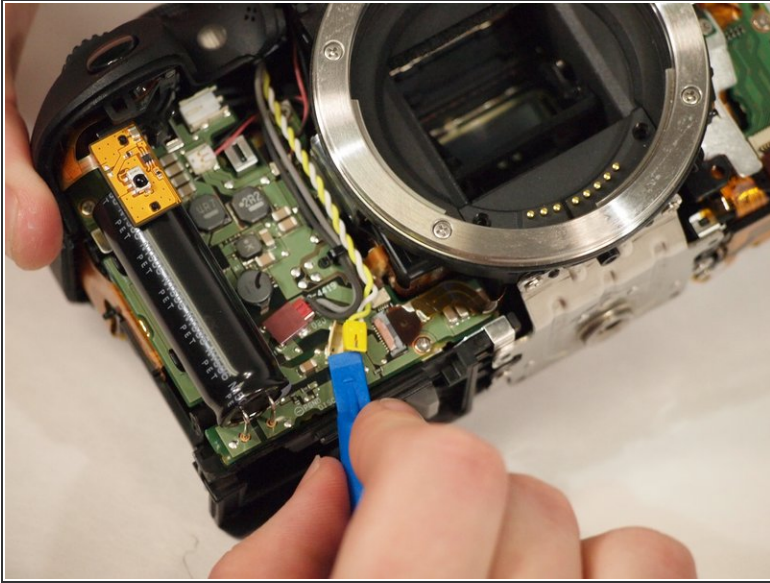


- Using the plastic wedge, pry the front of the casing off the camera.

⚠ Electric shock Warning!! Be careful not to touch the terminals of the capacitor, as this can cause the capacitor to discharge.

- Set the front aside, preferably in a safe place.

Step 12

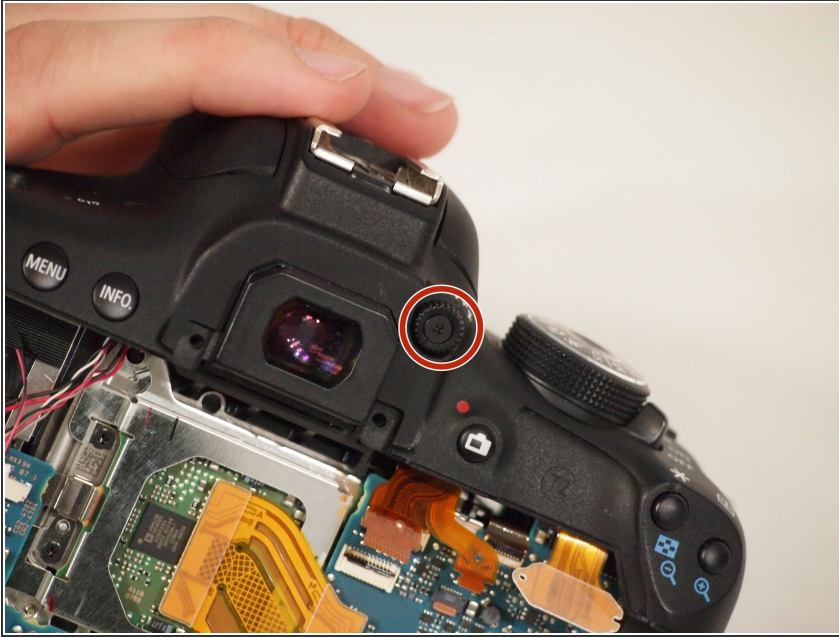


- Remove the yellow and red connections on the front near the black cylinder (capacitor).
- The yellow connector will just pop out if pried from the bottom using a plastic wedge.
- The red connector will pull out of the casing with either a plastic wedge or a thin set of tweezers.



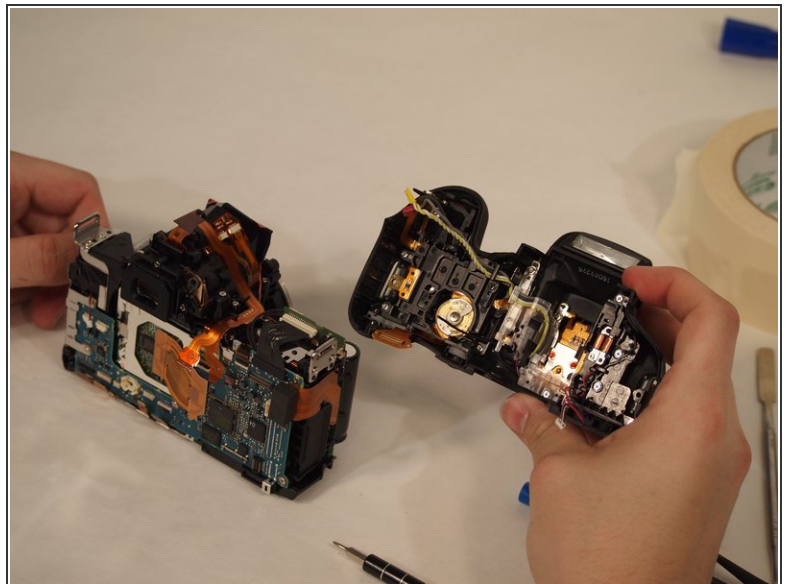
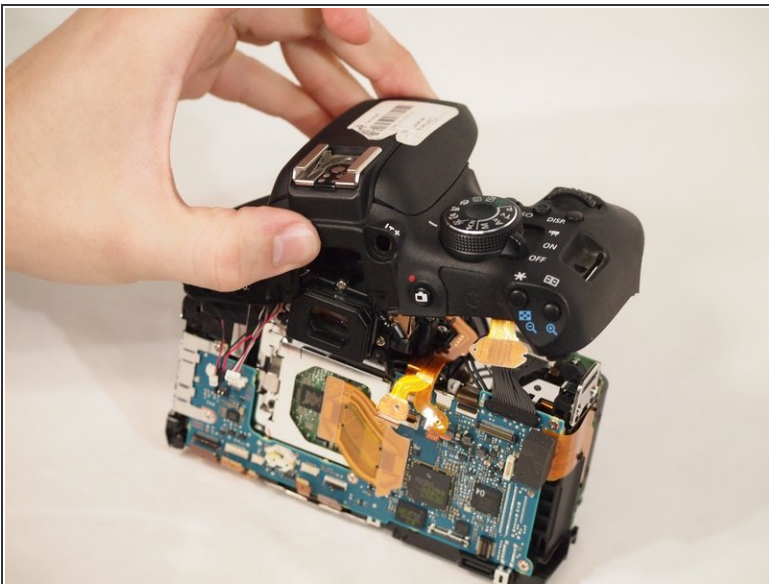
Electric shock Warning!! be careful not to touch the terminals of the capacitor, as this can cause the capacitor to discharge.

Step 13



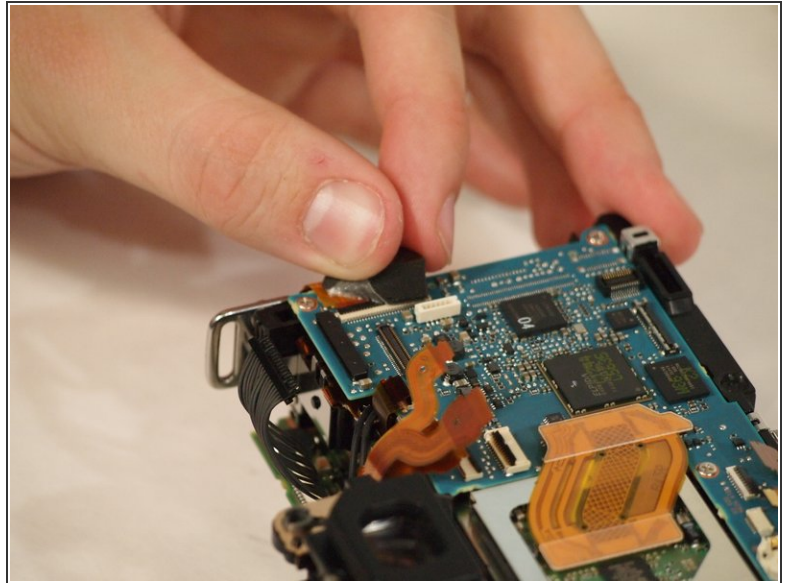
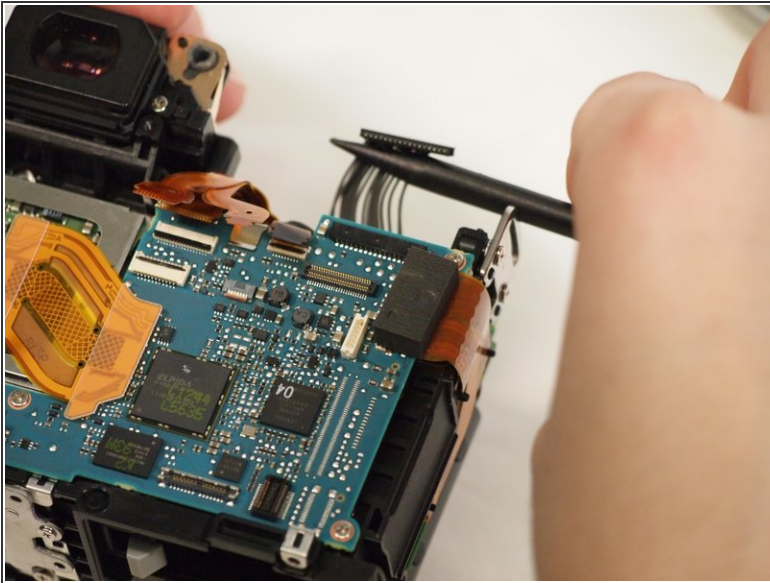
- Remove the viewfinder adjustment knob with a screwdriver. Once this screw is out, the entire flash assembly is ready to be removed.

Step 14



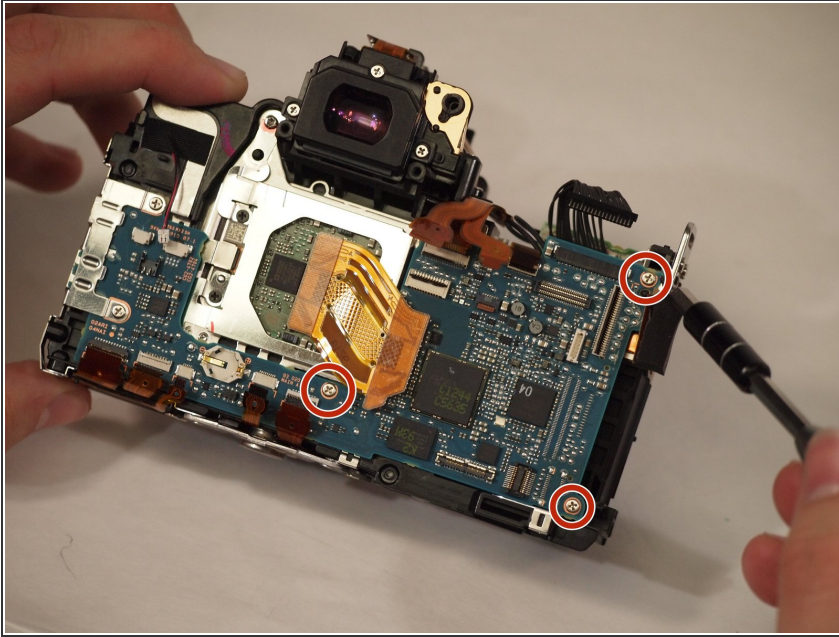
- Remove the entire upper piece of the casing. This is the flash assembly and is sold as a single piece. This piece should easily pull up and off the camera casing.

Step 15 — Motherboard



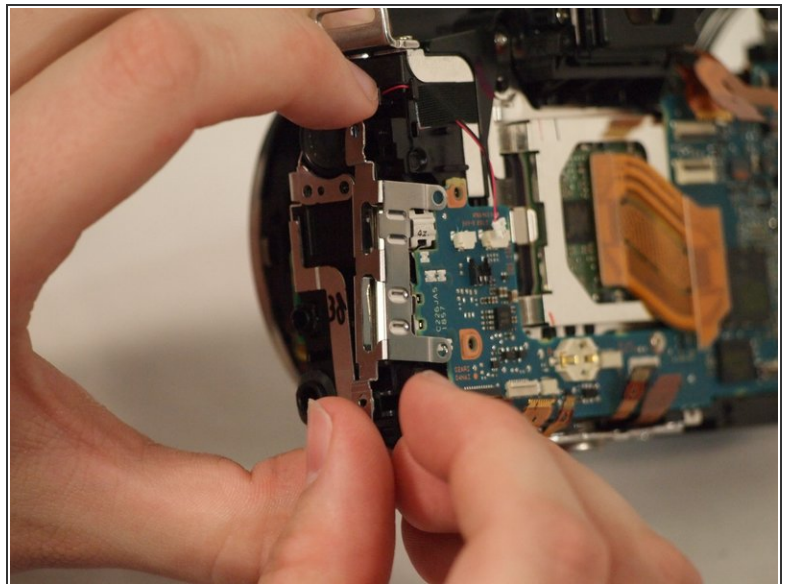
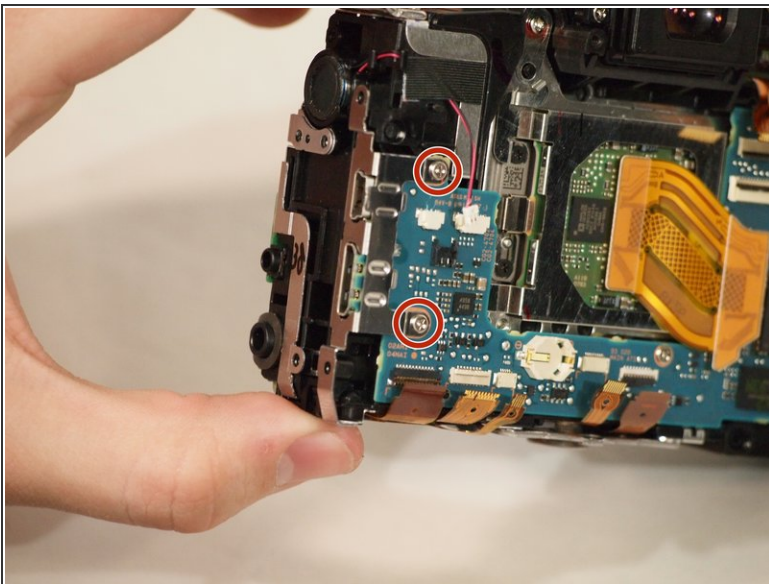
- Now that you have removed the flash assembly, it is time to remove the motherboard.
- First, the three remaining ribbon connectors should be gently disconnected. They are both located on the upper right side of the motherboard.
- The foam on second ribbon connector must be pulled back to remove it. Do this gently as to not damage the connector or the foam. There is a small switch under the foam that must be flipped up before the connector can be removed.

Step 16



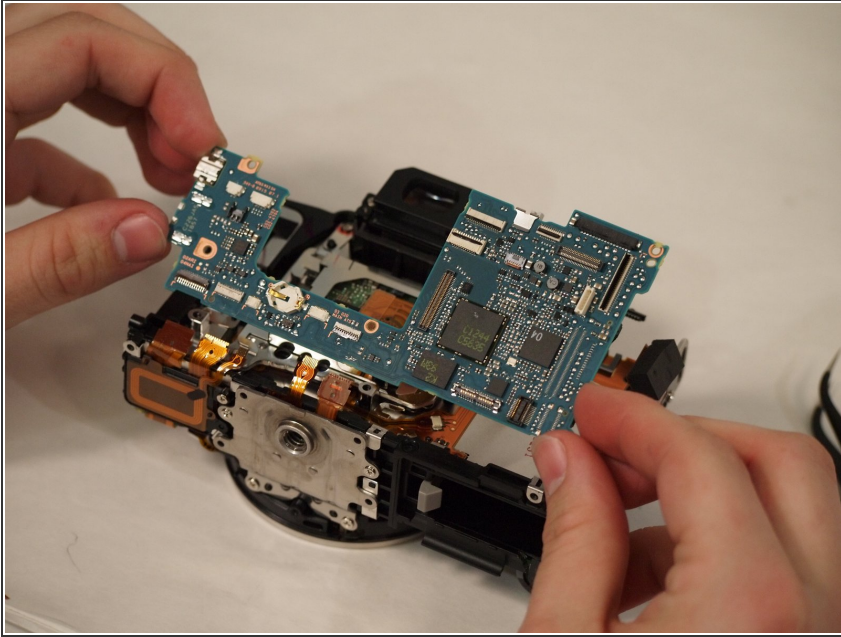
- Remove the two screws on the right side of the motherboard as well as the screw in the center.

Step 17



- Remove the two screws connecting the metal port connector to the motherboard. After the screws are removed, slide the metal piece out of place.

Step 18



- With all the connectors and screws removed, Remove the motherboard from the device.

To reassemble your device, follow these instructions in reverse order.