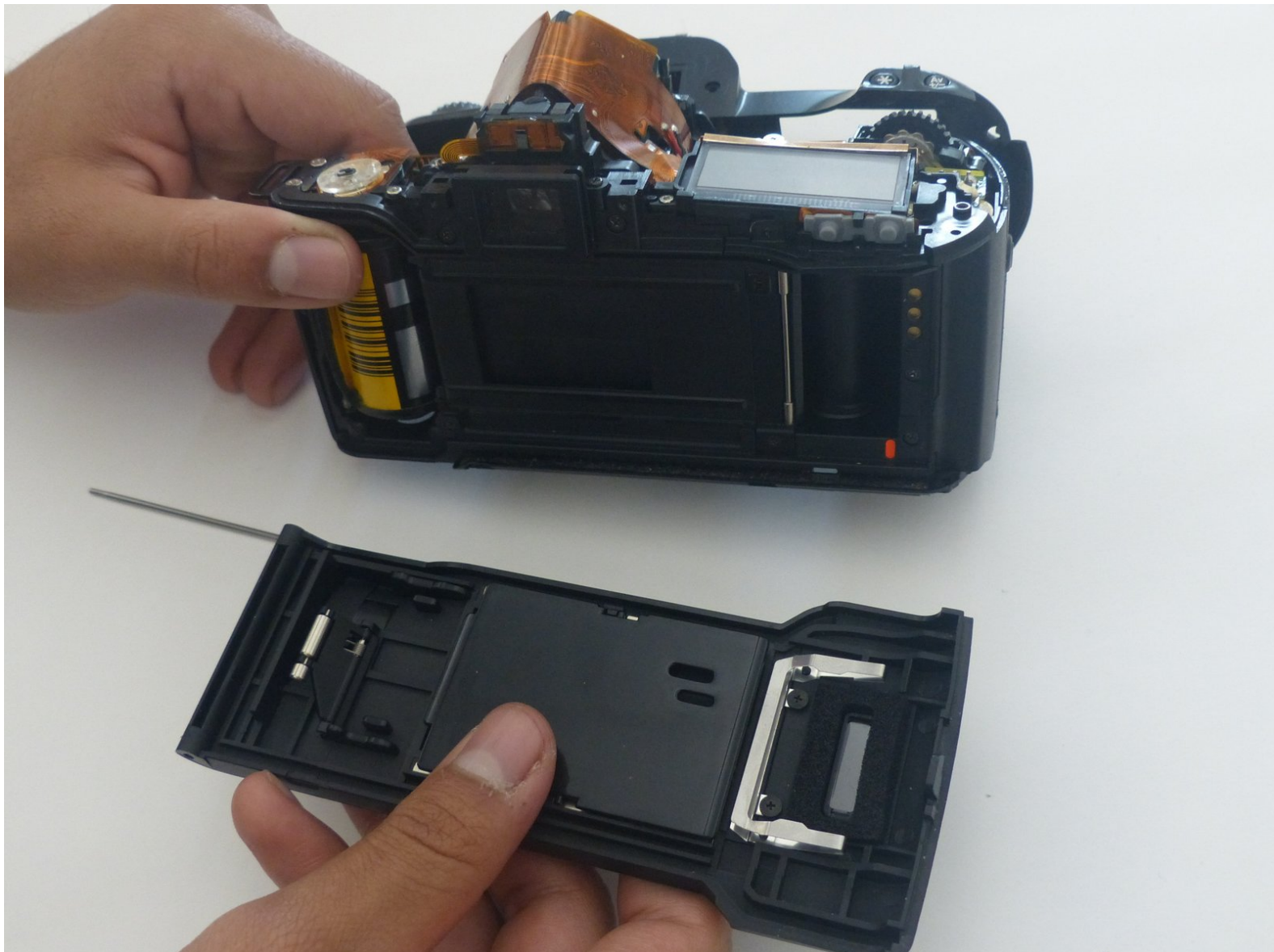




Canon EOS Rebel XS 35mm Back Latch Replacement

iFixit replacement guide for the back latch for the Canon EOS Rebel XS 35mm camera.

Written By: [christiansvezia](#)



INTRODUCTION

This is a necessary procedure for replacing the back latch of the Canon EOS Rebel XS 35mm camera. This guide details how to remove the back latch and put a back latch back on, whether it's the same back latch or a new one. The back latch covers and protects the film, among other things.



TOOLS:

- [Paper Clip](#) (1)
 - [ESD Safe Tweezers Blunt Nose](#) (1)
 - [Phillips #000 Screwdriver](#) (1)
-

Step 1 — Bottom Cover



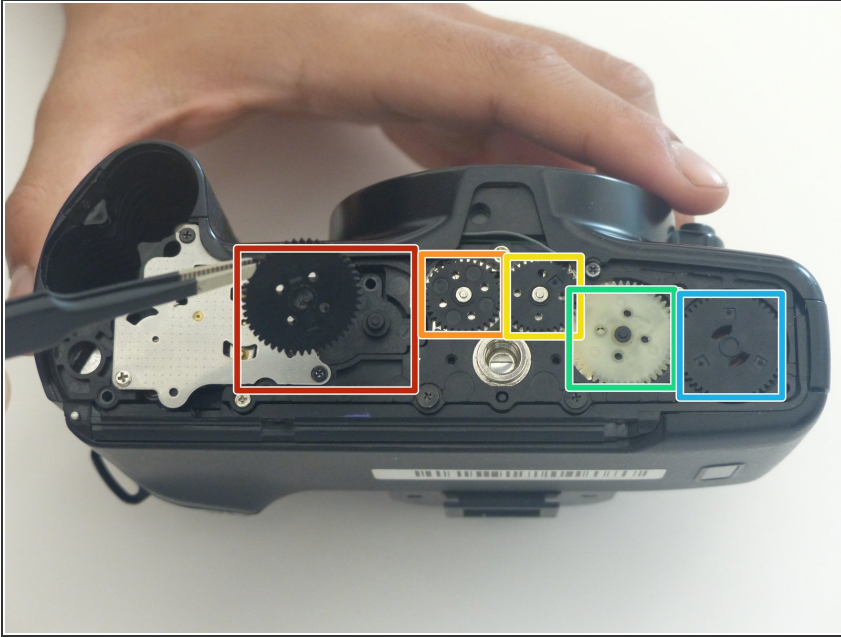
- Remove 6 screws using a PH000 Screwdriver.
 - Remove 1 (7mm) screw
 - Remove 5 (4mm) screws

Step 2



- With your fingers, push on the bottom cover with a horizontal force until it clicks and separates.

Step 3



- With tweezers - although you can also use your fingers - you may remove these 5 gears (shown with colored squares around them) and place them somewhere else for the time being. They fall out easily while you're working, so this will help you stay organized.

Step 4 — Top Cover



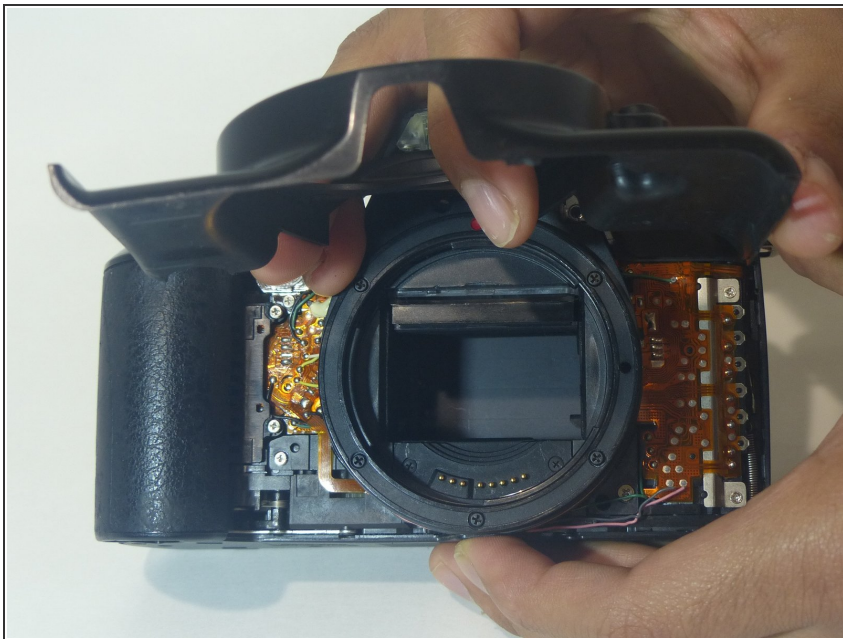
- Using a PH000 screwdriver bit, remove the three black screws shown in the two pictures that are all 4 mm in length and 1 mm in diameter.

Step 5



- Using a Phillips #000 screwdriver, remove the two black screws shown in the picture that are both 6 mm in length and 1.25 mm in diameter.

Step 6



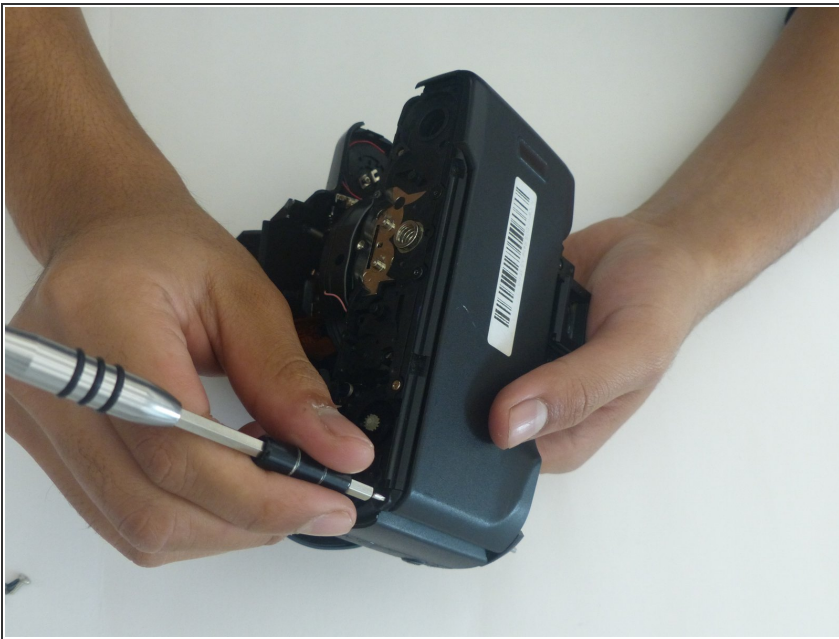
- Pull off the front cover.

Step 7



- Using an opening tool (you can also use your nails, but try not to use something potentially damaging to the camera such as metal), separate the top cover from the rest of the camera!

Step 8 — Back Latch



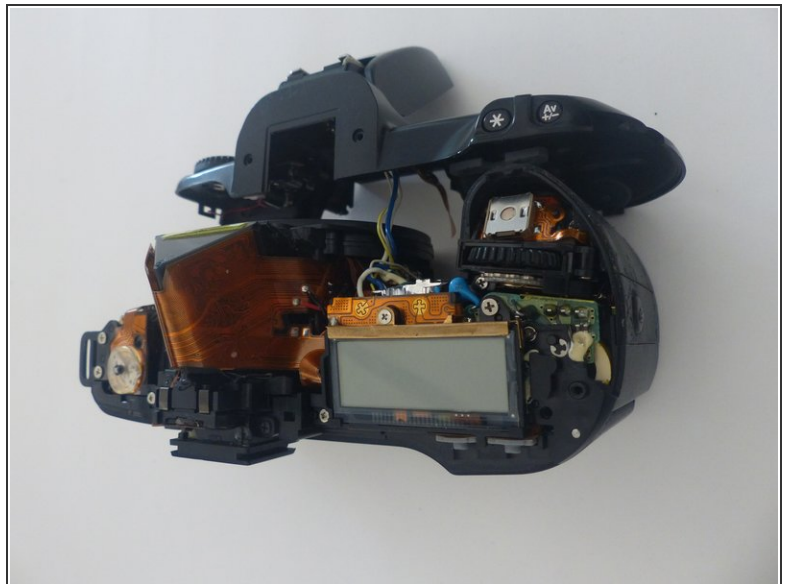
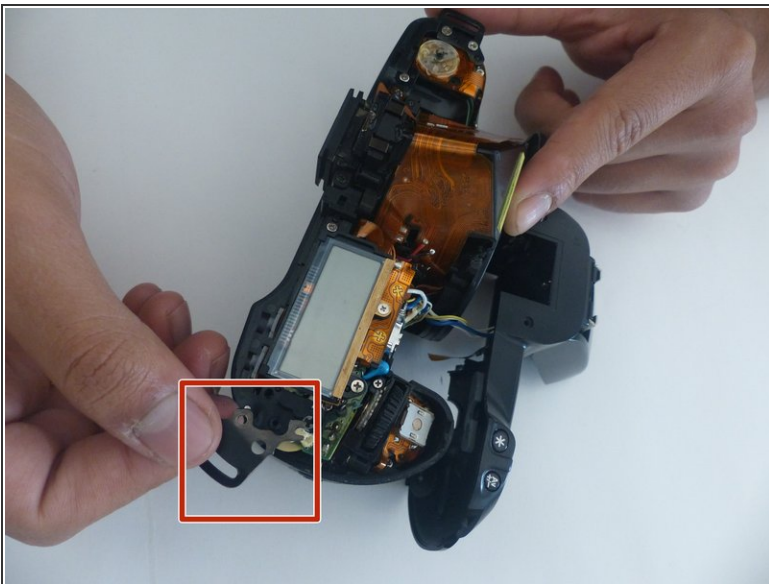
- Once the front, top, and bottom covers have all been removed, it's time to remove the back latch! Using a paperclip or something similar (anything that's very skinny), push on the end of the skinny, silver, metal rod that vertically travels through the camera. Do this until enough of the rod pops out on the other side for the next step.

Step 9



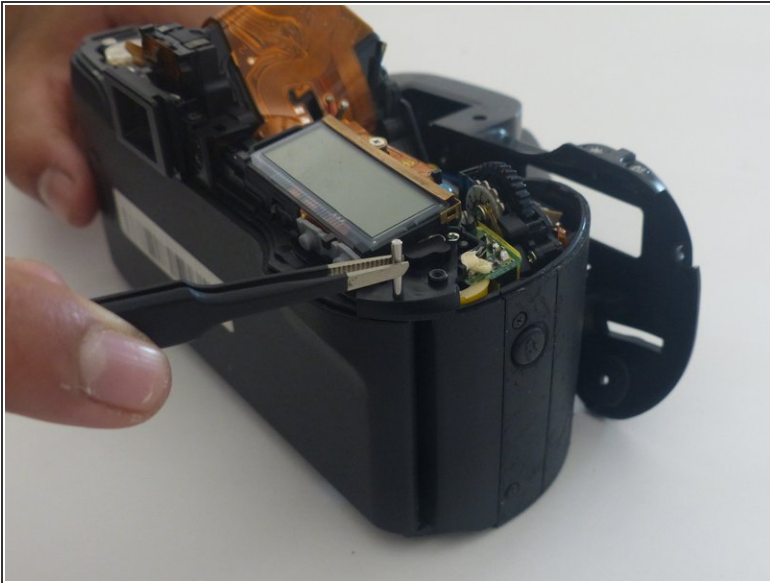
- [if you can add details to this step. Edit this step.](#)

Step 10



- [if you can add details to this step. Edit this step.](#)

Step 11



- With a pair of tweezers or just your fingers, pull the rod completely out of the camera. The back latch should then completely detach from the camera.

To reassemble your device, follow these instructions in reverse order.