



# Canon EOS Rebel XS 35mm Lens Mount Parts Replacement

Replacement guide for the various parts of the lens mount of a Canon EOS Rebel XS 35mm camera.

Written By: christiansvezia



---

## INTRODUCTION

This is a necessary procedure for replacing the parts of the lens mount of the Canon EOS Rebel XS 35mm camera, which is located on the front of the camera. These parts include a flimsy, brass-colored layer and a silver layer. Both of these layers fit inside of the ring on the front of the camera in a specific way.

---

### TOOLS:

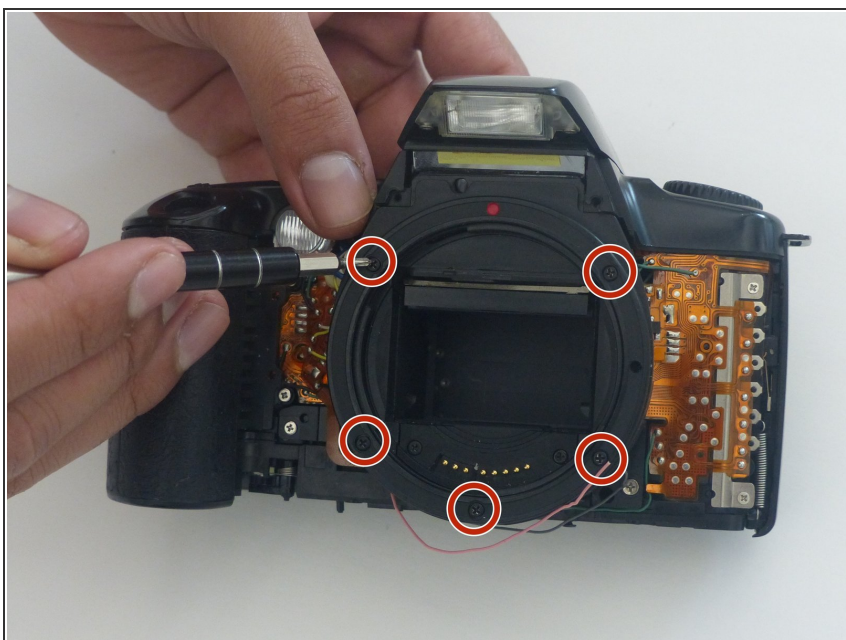
- [Phillips #000 Screwdriver](#) (1)
  - [ESD Safe Tweezers Blunt Nose](#) (1)
-

## Step 1 — Lens Mount Parts



- Using a PH000 screwdriver bit, remove the 2 black screws circled in the picture, which are both 6 mm in length and 1.25 mm in diameter.

## Step 2



- Using a PH000 screwdriver bit, remove the 5 black screws circled in the picture, which are all 5.5 mm in length and 2 mm in diameter.

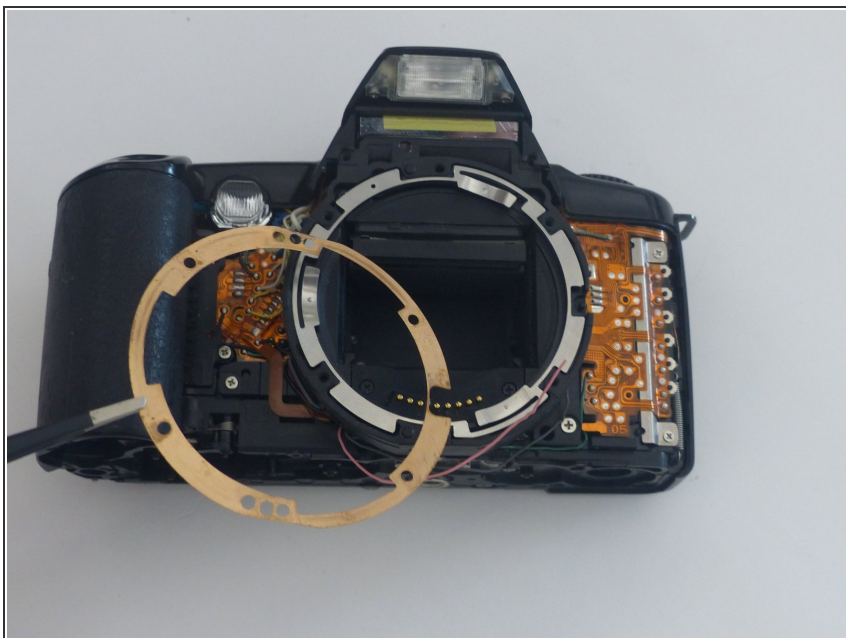


### Step 3



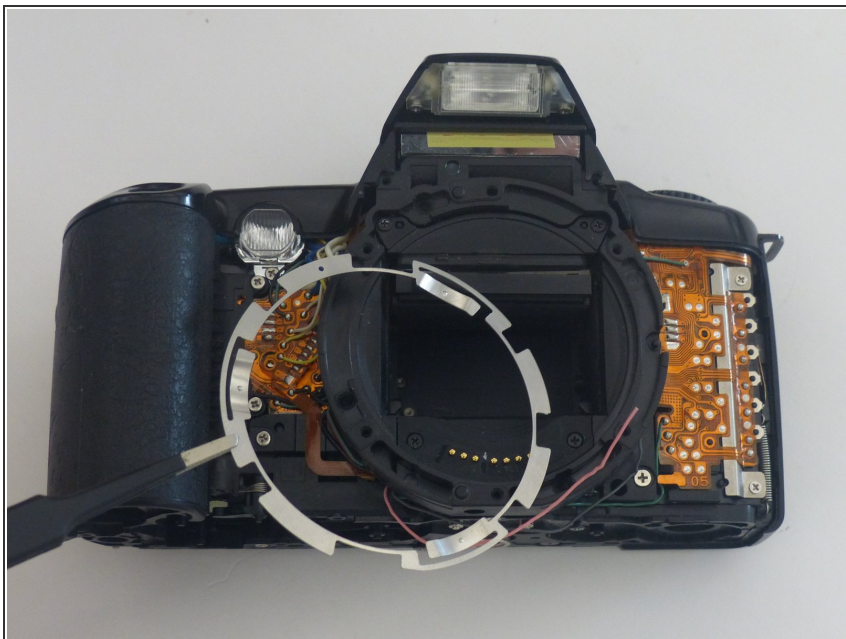
- Simply using your fingers - although you can use something else such as tweezers - remove the first layer of the lens mount. This first layer is black, plastic, has a red dot at the top, and so on.

### Step 4



- Using (preferably) tweezers - although you can also use your fingers - remove the flimsy brass-colored layer of the lens mount.

## Step 5



- Using (preferably) tweezers - although you can also use your fingers - remove the silver layer of the lens mount.

To reassemble your device, follow these instructions in reverse order.

Reassembly can be a lot harder than disassembly for this part of the camera, which accounts for the large range in estimated time.