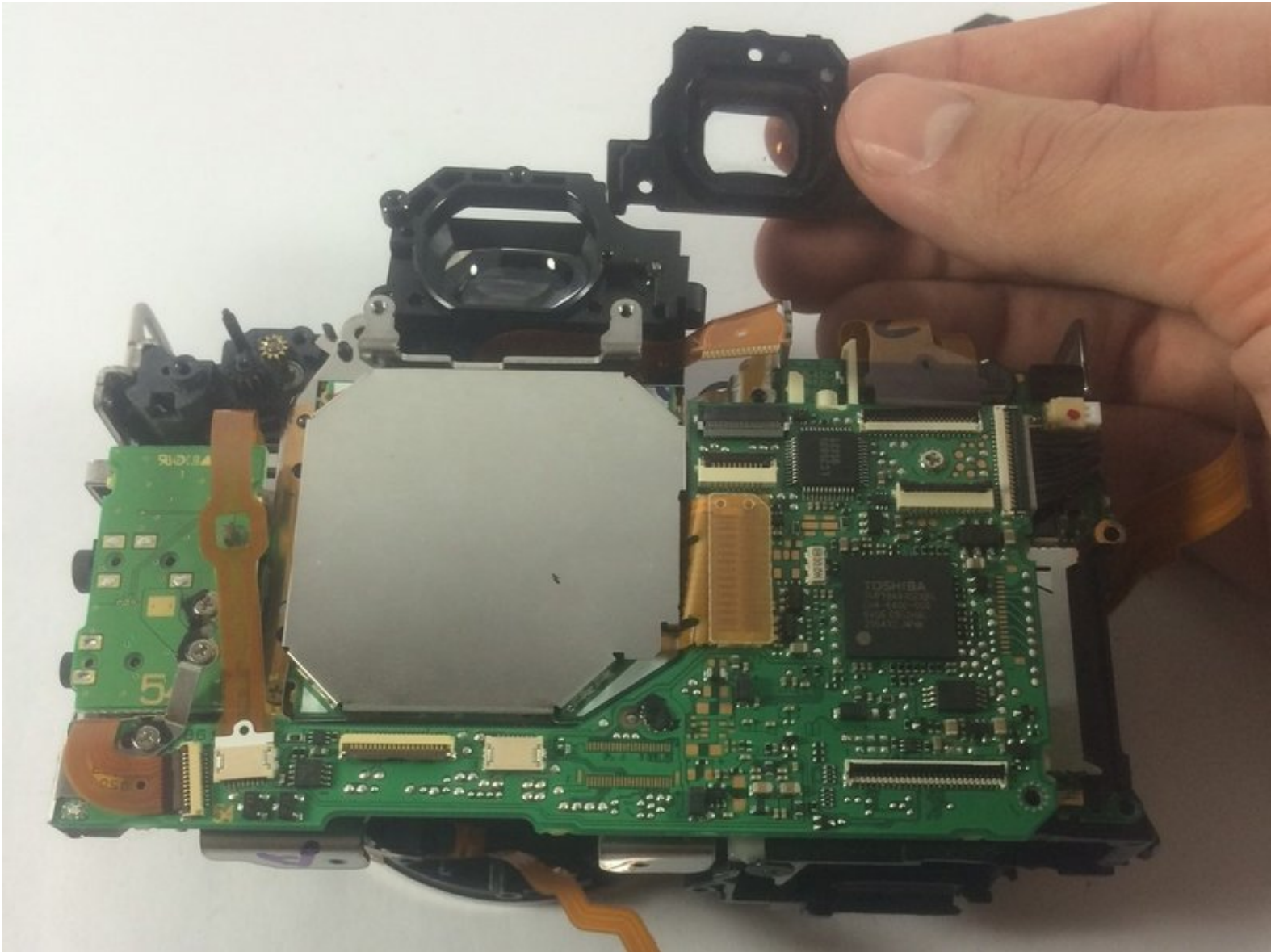




# Canon EOS Rebel XS Interior Eyepiece Replacement

Use this guide to replace the interior eyepiece of the camera.

Written By: Daniel Bussone



---

# INTRODUCTION

Use this guide to replace the interior eyepiece of the camera.



## TOOLS:

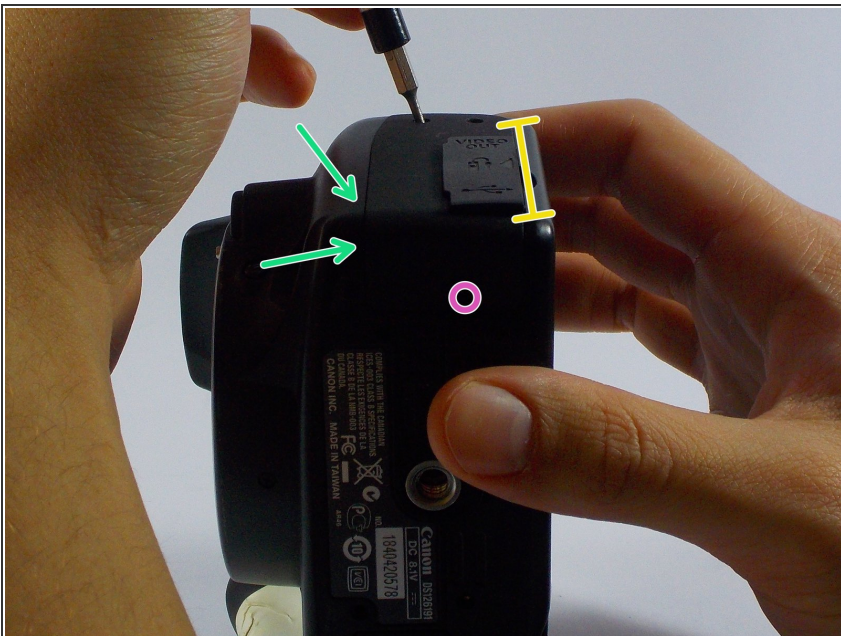
- [Phillips #00 Screwdriver](#) (1)
  - [Spudger](#) (1)
  - [Tweezers](#) (1)
-

## Step 1 — Latch Side Cover



- Remove the two 3mm (1/8") black screws from the side cover using a #00 Phillips screwdriver.

## Step 2



- On the bottom, remove the 6mm (13/64") screw with the #00 Phillips Screwdriver.
- Pry up the panel; starting from the front/bottom corner, as indicated.
- There's a concealed lip, under the opposite edge.

### Step 3 — Disassembling Canon EOS Rebel XS Front Cover



- Remove three medium length screws from the bottom of the camera

### Step 4



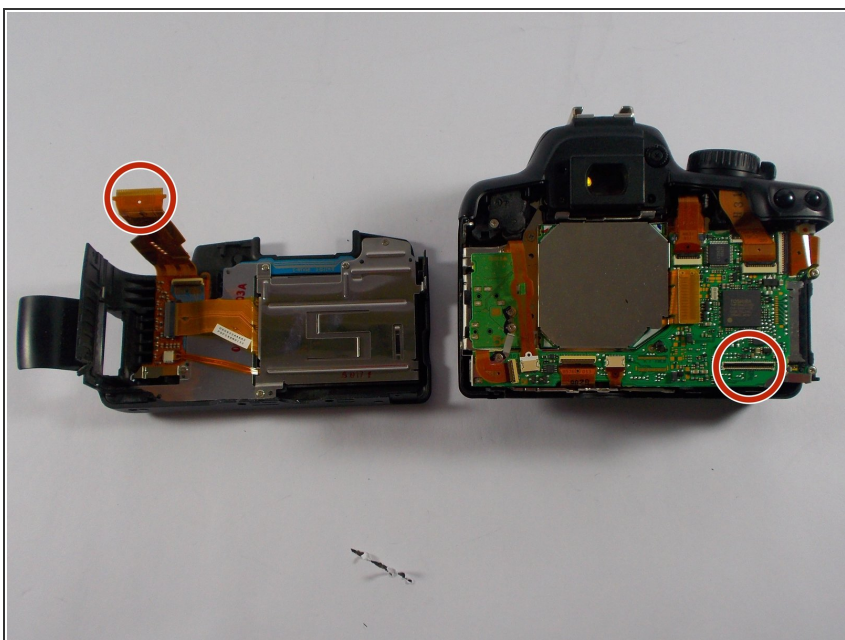
- Remove the two medium length screws on the front panel of the camera above the lens mount.
- Once you done, you may use the Spudger to panel from non-grip side.
- ⓘ If you start on the grip side, it will be more challenging to loosen the panel.

## Step 5 — Back Cover



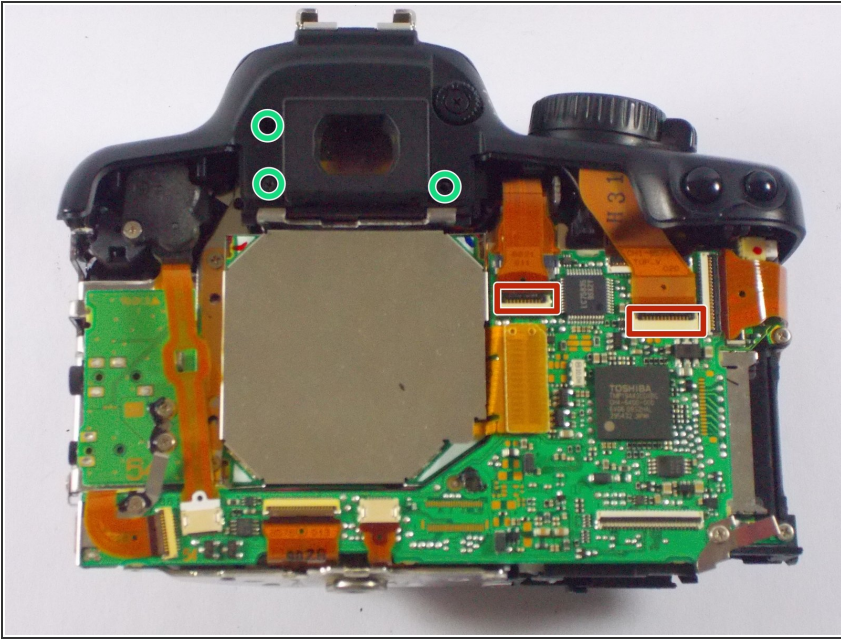
- Remove the three long black screws from the bottom using a #00 Phillips screwdriver.
- Use tweezers to lift the panel.

## Step 6



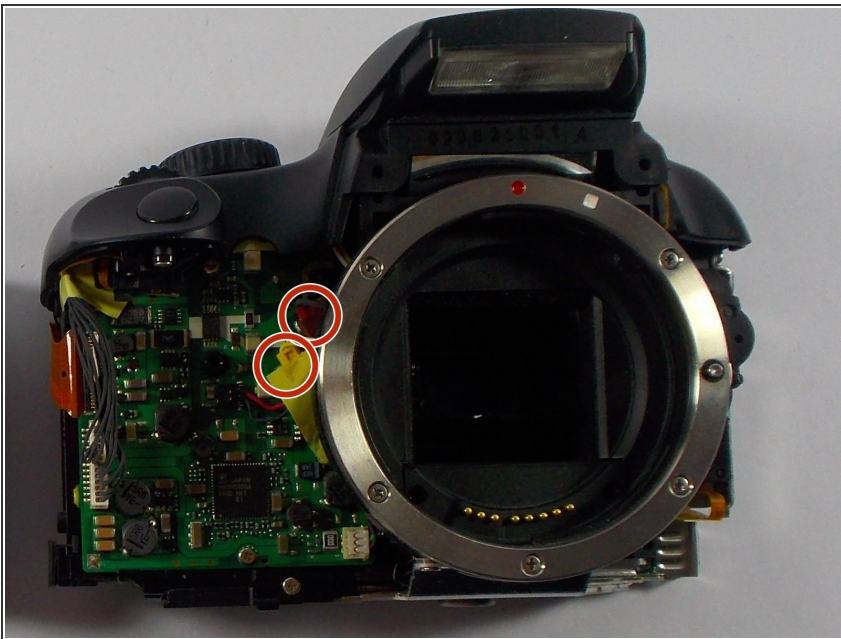
- Once you have detached the back cover, use a pair of tweezers to lightly pull on strap found connecting the back cover to the camera.

## Step 7 — Top Panel



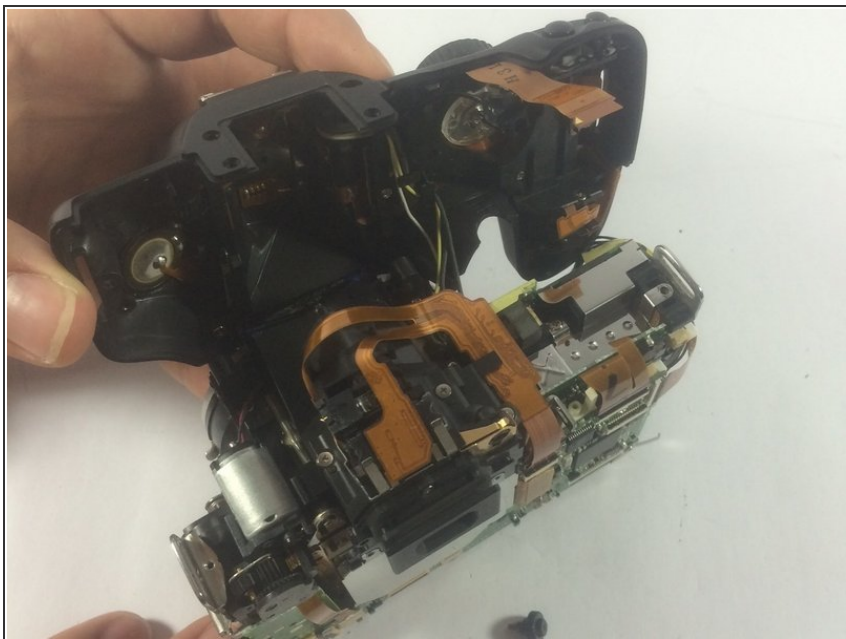
- Remove the following ribbons with the tweezers by gently pulling on them.
- Remove the three black screws, near the eye piece, using the Phillips Screwdriver.

## Step 8



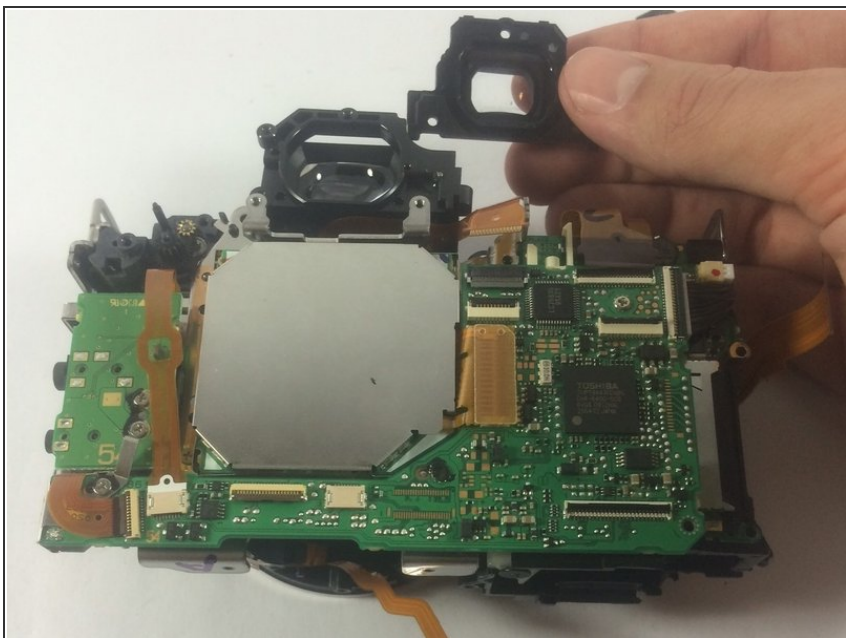
- Remove the cable heads attached on the front side of the camera next to the lens mount.
- ⚠ Be gentle when pulling wires loose, use the tweezers to remove the wires.

## Step 9



- You can use your fingers to pull the top panel of the camera.

## Step 10 — Interior Eyepiece



- After removing the top panel, you can use your fingers to remove the eye piece from the camera.

To reassemble your device, follow these instructions in reverse order.