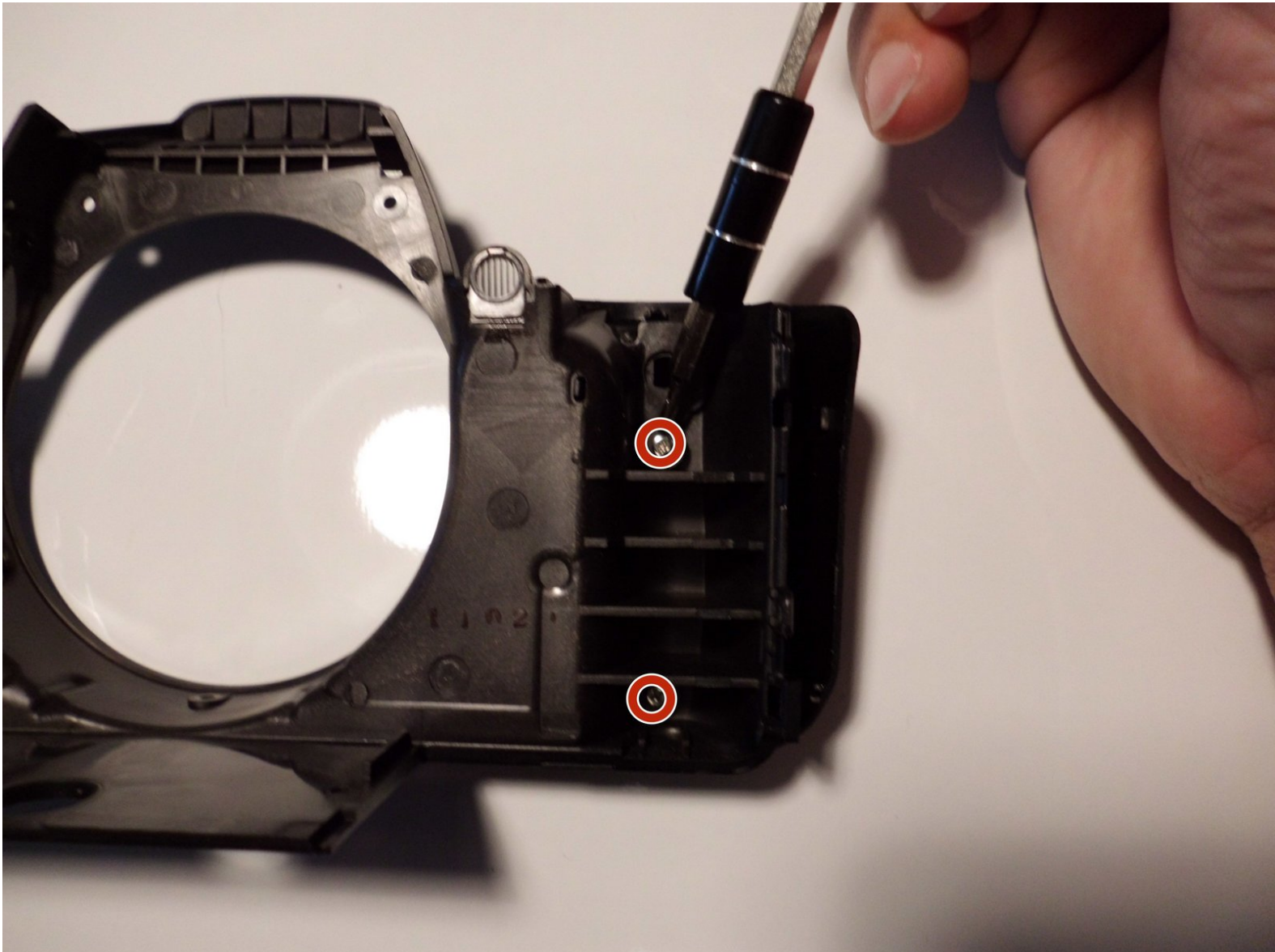




Canon EOS Rebel XTi Soft Touch Grip Replacement

Replace the soft touch grip on your camera to regain Comfort while using the device.

Written By: Luis Calle



INTRODUCTION

Replacing the grip on your camera may be necessary at some point due to wear and tear. This is not a necessary replacement, but makes handling the camera easier and more comfortable.

TOOLS:

- [64 Bit Driver Kit](#) (1)
 - [iFixit Opening Tools](#) (1)
 - [Spudger](#) (1)
-

Step 1 — Battery



- Place the camera upside down, and position it so that the back of the camera is visible.

Step 2



- Pull the orange tab to the right to release the primary battery.

Step 3



- To remove the secondary battery, reposition the camera to where the display screen is facing upwards.
- Place your finger inside the empty battery compartment and pull away from the camera on the ridged battery tab.

Step 4 — Memory Card



- Place the camera on its side with the soft touch grip facing up and the top of the camera facing right.

Step 5



- Slide the memory card door in the direction of the arrow engraved on the camera.
- Once the door has slid open to its full position, lift up on the door.

Step 6



- With the door open, push down the small black plunger next to the CF slot. The CF card will disengage from the slot and be ejected far enough that you can grasp it between thumb and forefinger and remove it from the slot.

i The plunger will stay in its depressed position until a CF card is again inserted in the slot.

Step 7 — Back Casing



- Remove the three black 4 mm JIS #0 screws on the bottom of the camera.

Step 8



- Remove the two black 6 mm Phillips screws from the right side of the camera.

Step 9



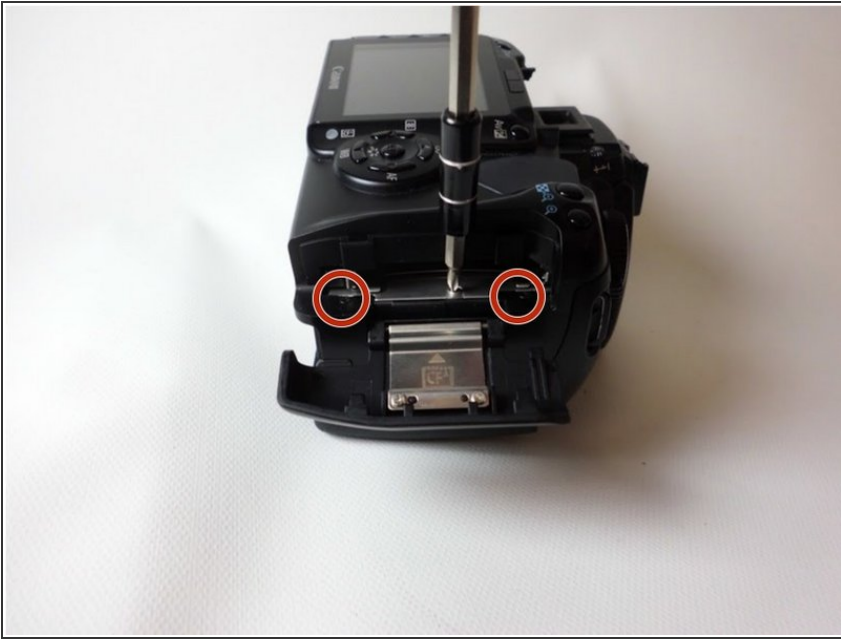
- Remove the two black 4 mm Phillips screws on each side of the camera under the strap hooks.

Step 10



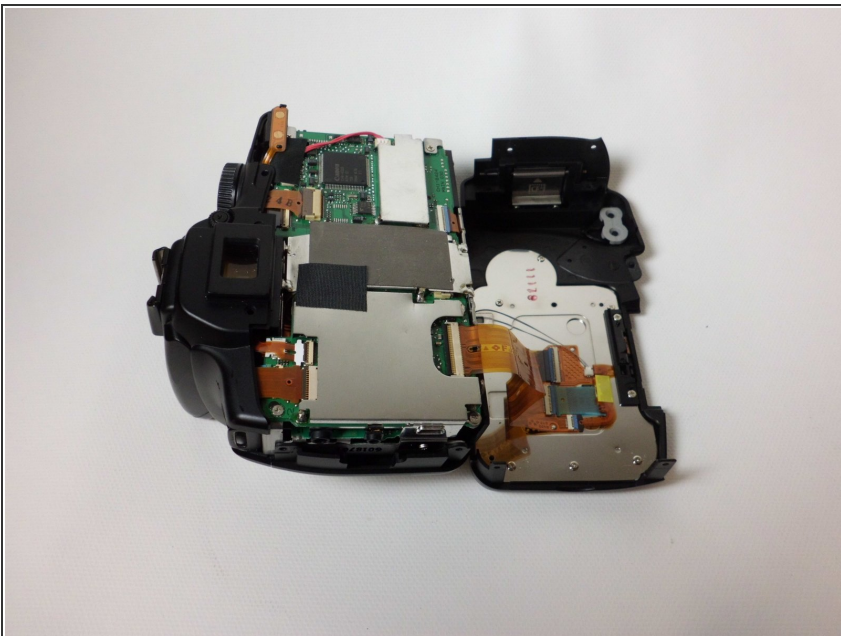
- Remove the two black 4 mm Phillips head screws on the side of the camera opposite to the hand grip.

Step 11



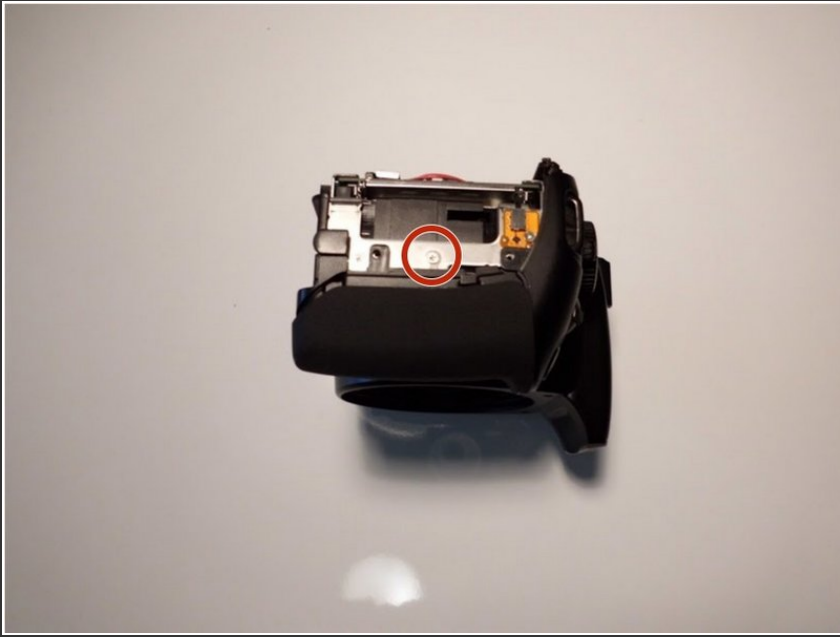
- Remove the three 1 mm Phillips #0 screws located in the memory card slot.
- ⓘ Two of these screws are black, and the third is silver.

Step 12



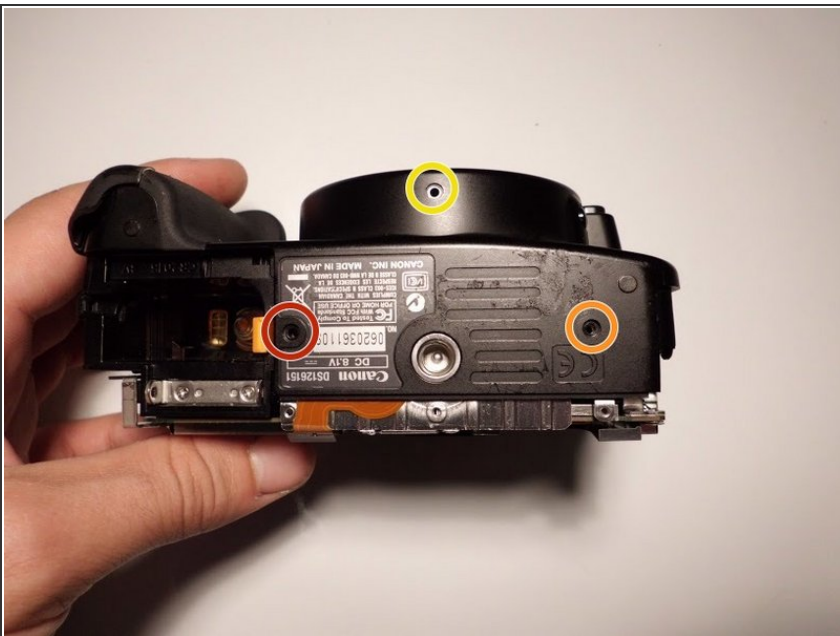
- Gently pry off the back casing.
- ⚠ Before completely removing the back casing, be sure to disconnect the single ribbon cable running from the motherboard to the LCD display.
- Use a spudger to lift the tab on the ribbon cable's ZIF connector.
- Gently pull the ribbon cable out of the connector.

Step 13 — Front Casing



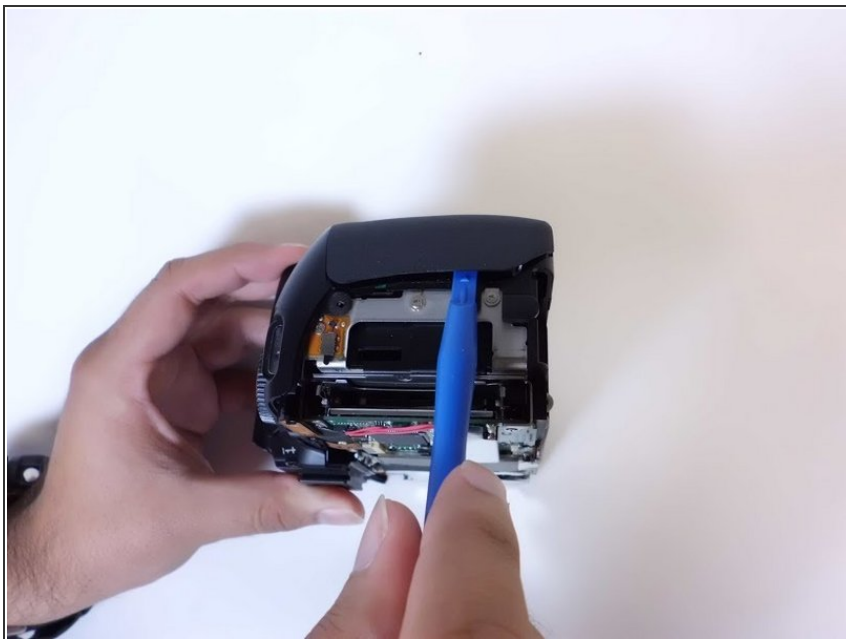
- Remove the single silver 3 mm Phillips screw.

Step 14



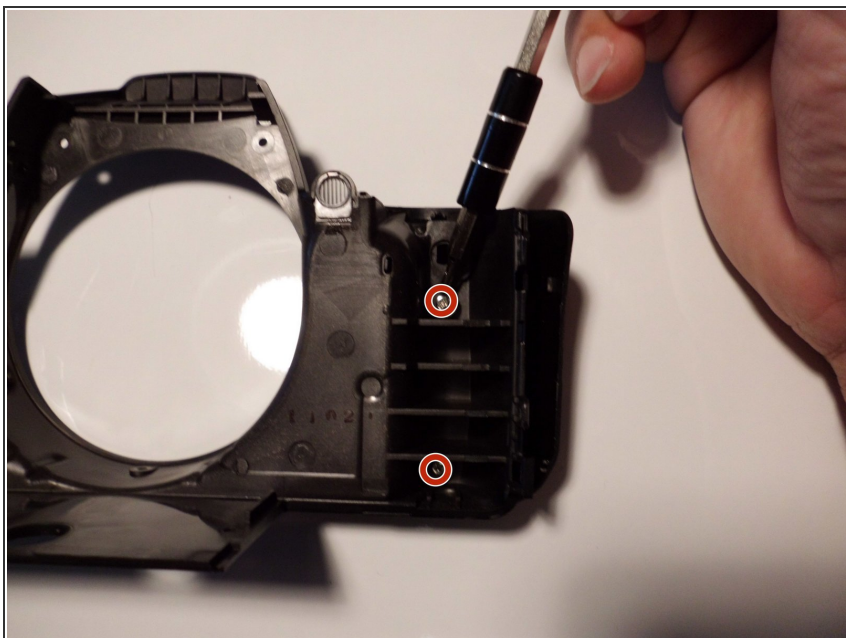
- Remove the single 6 mm Phillips screw.
- Remove the single 4 mm Phillips screw.
- Remove the single 3 mm Phillips screw on the bottom of the lens.

Step 15



- Gently pry off the front casing.
- ⓘ There are no ribbon cables to remove for this portion of the disassembly.

Step 16 — Soft Touch Grip




- Remove the two 3 mm Phillips screws behind the grip.

Step 17



- Remove the grip from the front casing by simply pulling on it and releasing the pins which hold it in place.

 Be careful not to break any clips or rip the rubber while removing the grip.

To reassemble your device, follow these instructions in reverse order.