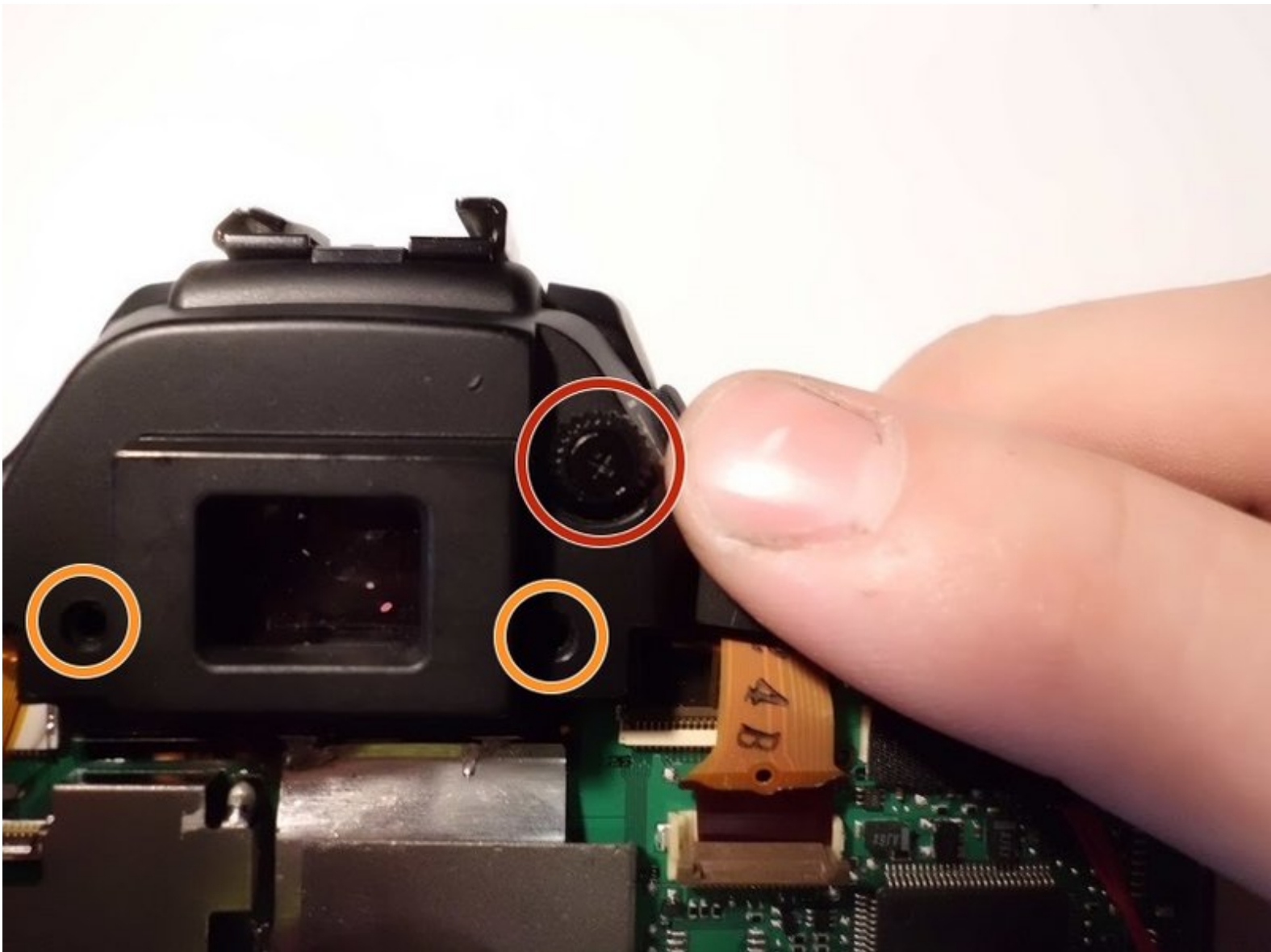




Canon EOS Rebel XTi Top Casing Replacement

Remove the top portion of the casing to access the flash module, selector dial, and snapshot button.

Written By: Nicholas Abate



INTRODUCTION

Prerequisite Only

Removing the top casing from the camera is necessary to perform maintenance or replace components such as the flash module, or any buttons located on the top of the camera. In order to remove the top casing, the back and front casings must both be removed.

TOOLS:

- [Fingers](#) (1)
 - [Tweezers](#) (1)
 - [JIS #00 Screwdriver](#) (1)
-

Step 1 — Battery



- Place the camera upside down, and position it so where the back of the camera is visible.

Step 2



- Pull the orange tab to the right to release the primary battery.

Step 3



- To remove the secondary battery, reposition the camera to where the display screen is facing upwards.
- Place your finger inside the empty battery compartment and pull away from the camera on the ridged battery tab.

Step 4 — Memory Card



- Place the camera on its side with the soft touch grip facing up and the top of the camera facing right.

Step 5



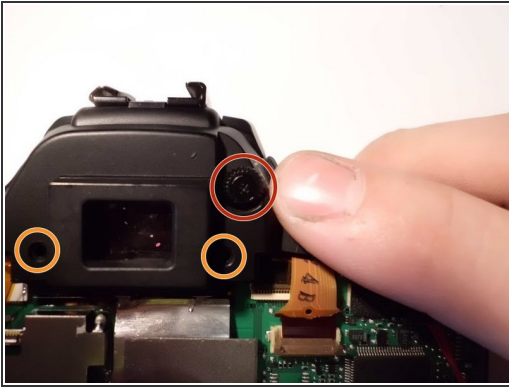
- Slide the memory card door in the direction of the arrow engraved on the camera.
- Once the door has slid open to its full position, lift up on the door.

Step 6



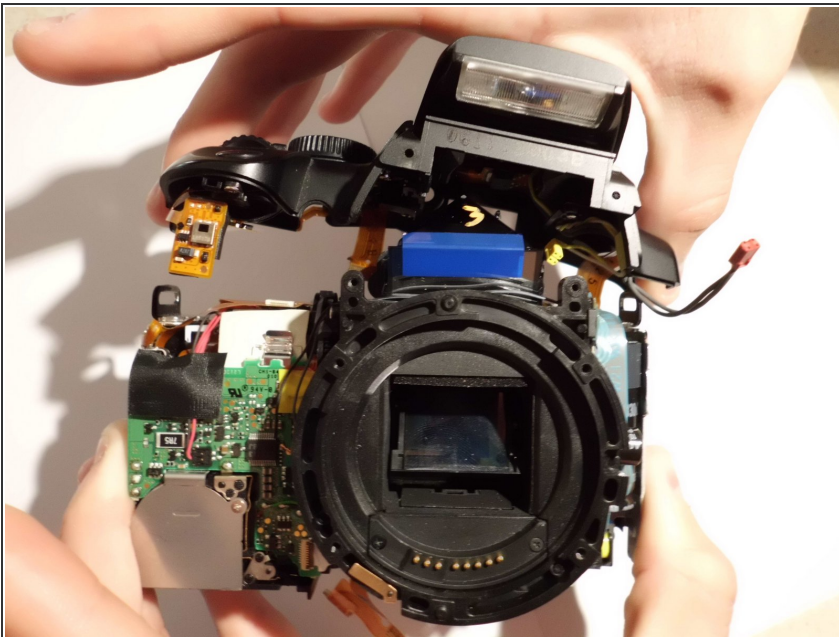
- With the door open, push down the small black plunger next to the CF slot. The CF card will disengage from the slot and be ejected far enough that you can grasp it between thumb and forefinger and remove it from the slot.
- ⓘ The plunger will stay in its depressed position until a CF card is again inserted in the slot.

Step 7 — Top Casing



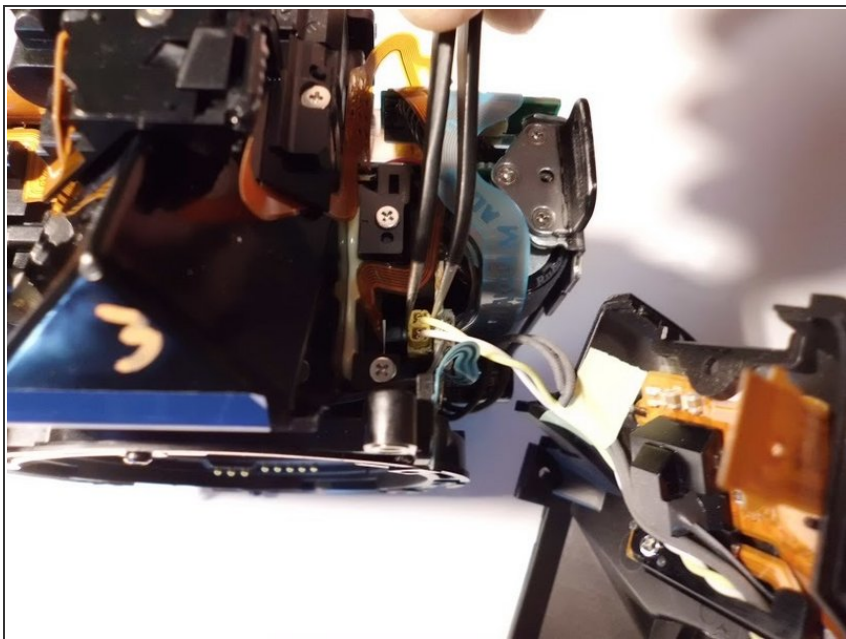
- Remove the single 10 mm JIS #00 shoulder screw.
- Remove the two 6 mm JIS #00 screws.

Step 8



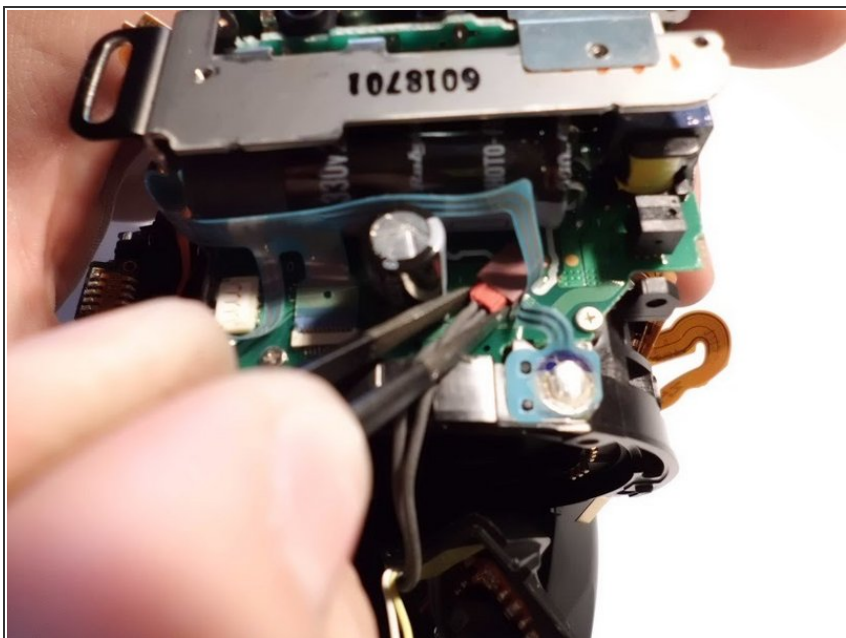
- Separate the top casing from the electrical components enough to expose the wire harnesses that will need to be disconnected.
- ⚠ Ensure to remove the casing gently. There are several wire harnesses connecting the motherboard to components on the casing.

Step 9



- Unplug the yellow connector located on the top of the camera.

Step 10



- Disconnect the red connector located by the USB port.

To reassemble your device, follow these instructions in reverse order.