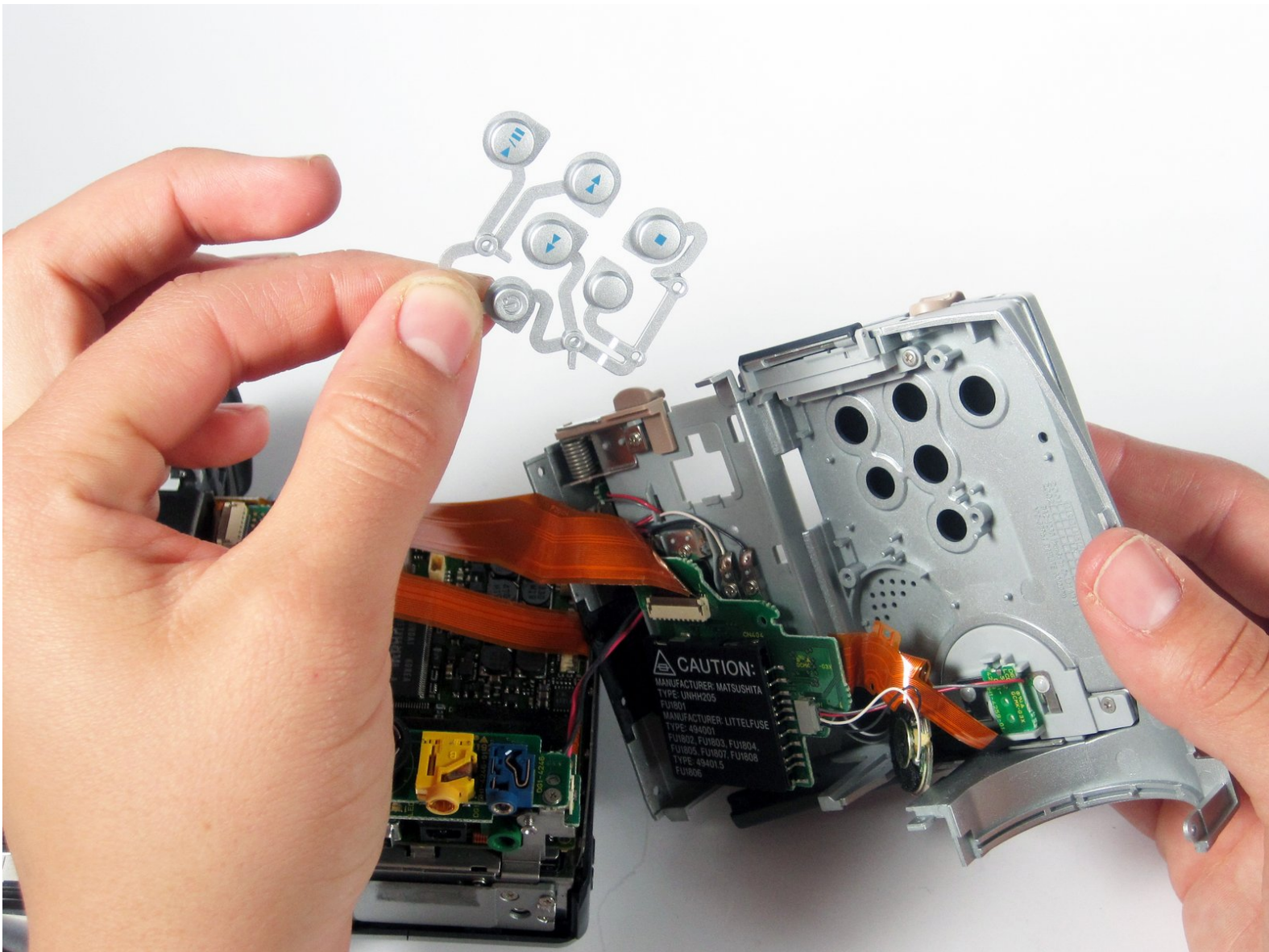




# Canon Optura 100MC Button Pad Replacement

This guide instructs about how to remove and replace the Button Pad (Play/Pause, Next, Previous, volume control) in the Canon Optura 100MC.

Written By: Jeanette Neethling



---

## INTRODUCTION

Use this guide to replace the button pad.



### TOOLS:

- [Phillips #00 Screwdriver](#) (1)
-

## Step 1 — Battery



- Orient the camera so that the back button panel and viewfinder are facing you.
- Push the "Battery Release" button to the side and hold.

## Step 2



- While holding the battery release button to the side, slide the battery towards you, past the release button.



## Step 3 — Hand Strap



- Orient the camera with the hand strap facing you.
- Remove the two 4mm #00 Philips screws.
- ⓘ When the screws are removed, the black plate will easily come off as well as the two metal plates under it. Be careful to not let them fall or get lost.

## Step 4



- Lift the strap up.

## Step 5 — The side of the Device



- Orient the camera so that the viewfinder is on your left and the lens is on your right.
- Remove the 4mm #00 Phillips screw.

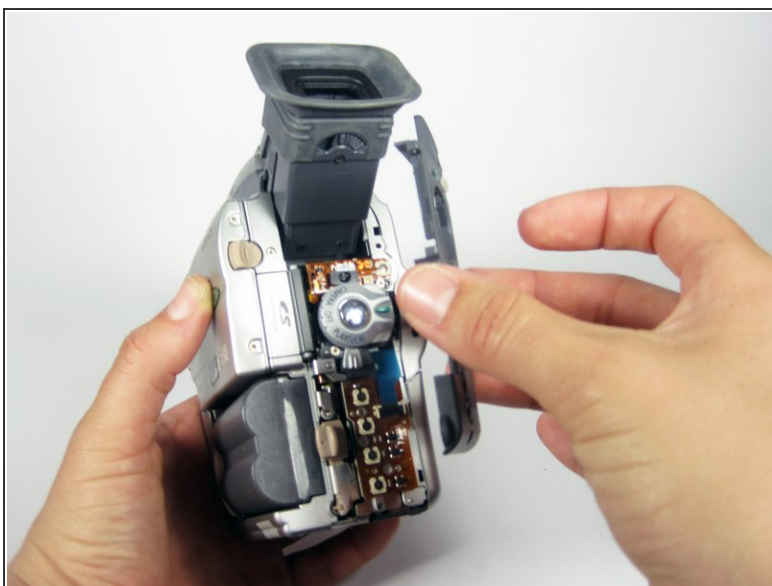
## Step 6



- Reorient the camera with the back button pad and viewfinder towards you.
- Remove the three 4mm #00 Phillips screws shown on the rear face of camcorder.



## Step 7



- Remove the plastic cover from the rear of the camcorder by gently pulling it towards you while holding the camera as shown.

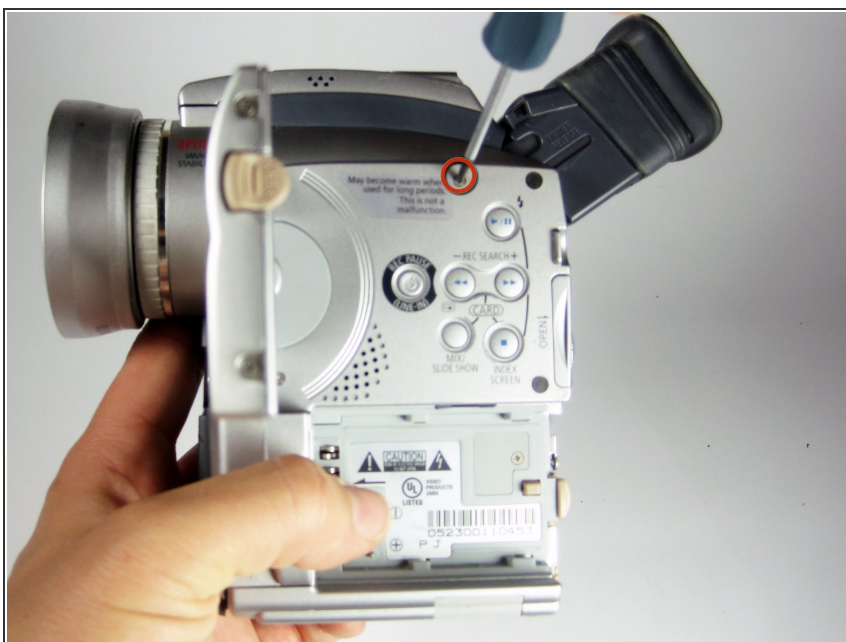
☑ The Battery Should be removed at this point, please ignore it in the picture.

## Step 8



- Remove the 4mm #00 Phillips screw located to the right of the LCD release switch.

## Step 9



- Open the LCD by using the release switch.
- Reorient the camera with the playback button pad and edge of LCD screen facing you.
- Remove the 4mm #00 Phillips screw shown.

## Step 10



- Reorient the camera with the top facing you. The side with the LCD screen should be on the right and the other side panel should be on the right.
- Open the pop up flash on the top of the camcorder.
- ⓘ A loud clicking noise is expected.
- Remove the 4mm #00 Phillips screw shown.

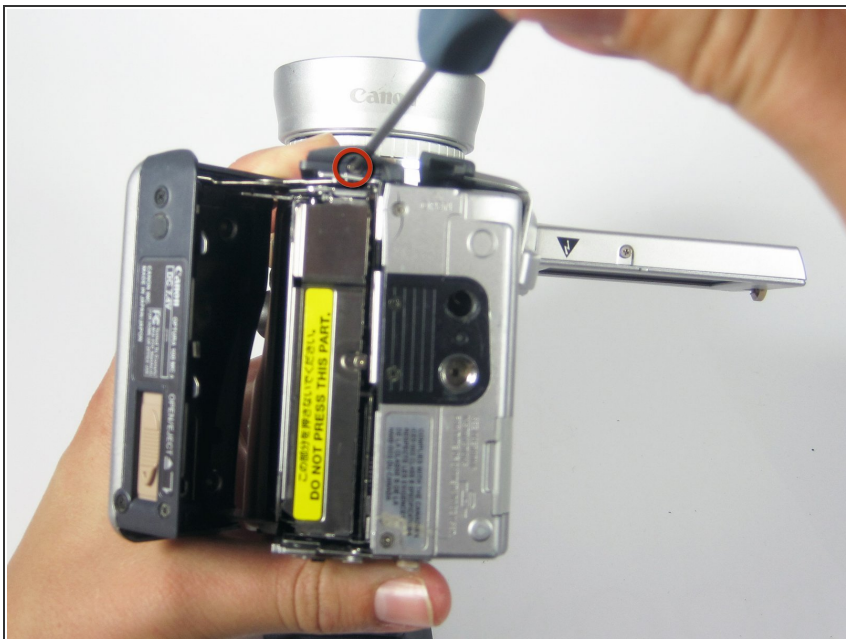
## Step 11



- Reorient the camera with the bottom facing you, LCD screen on the right, side panel on the left.
- Open the tape deck by sliding the switch and moving the deck cover to the left as shown.



## Step 12



- Remove 4mm #00 Phillips screw.

## Step 13



- Reorient camera with lens facing you.
- Remove the #00 Philips 4mm screw shown on the hinge of the tape deck cover.

## Step 14



- To remove the camcorder lens hood, twist the hood to counterclockwise and it will come loose, then pull towards you.

## Step 15



- Close the tape deck by gently pushing it toward the body of the camera.
- Slide and remove the plastic cover on the bottom right, exposing the interface shown.

## Step 16



- Gently pull the front plastic cover towards you to remove.

## Step 17



- Remove 2 Philips #00 4mm screw shown.



## Step 18



- Reorient the camera so you are looking at the side of the camera with the viewfinder on the left and lens on the right.
- Holding the camera as shown, remove the 4mm #00 Phillips screw.

## Step 19



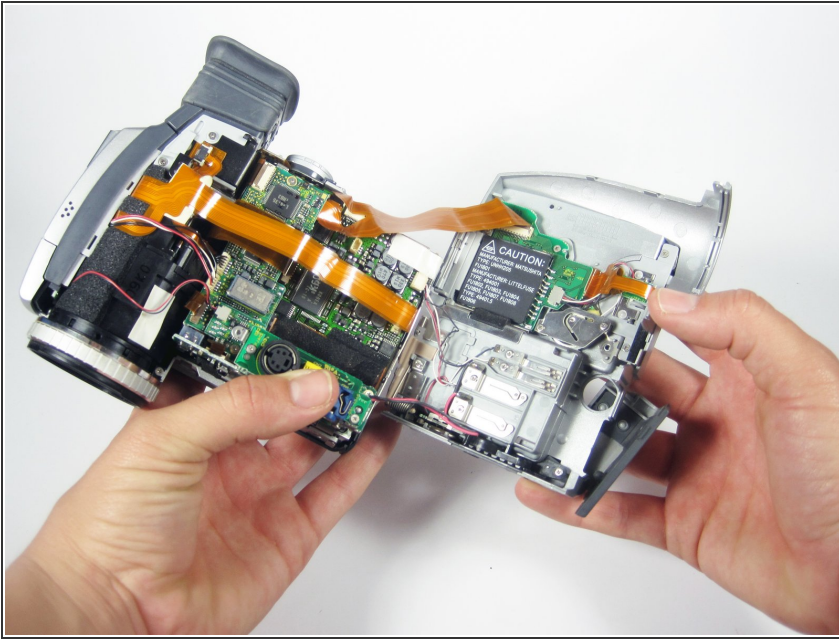
- Remove the 4 Philips #00 4mm screws shown.


## Step 20



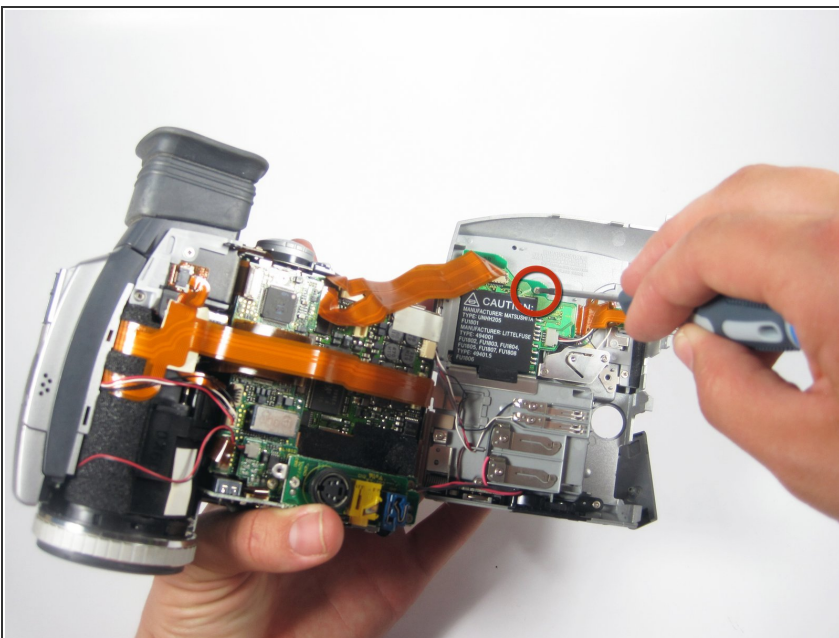
- Reorient the camera with the lens facing you.
  - Gently pull the side panel of the camera to the right to remove.
- ⚠ Be aware that there are wires connecting the cover to the body of the device, so the side cover will not come off entirely.

## Step 21




 The side of the device should now be open as shown. Again, there are wire connections between the side cover and the body of the camcorder. Do not separate the two entirely!

## Step 22 — Button Pad

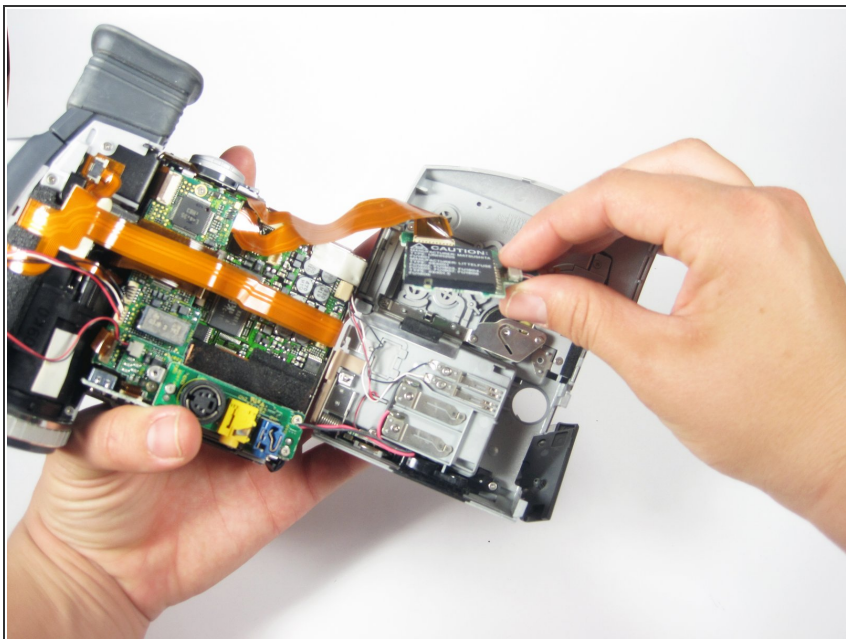


- Remove the #00 Philips 3mm screw as shown holding the small circuit board on the side panel.

 Hold the side panel and camera together, the orange ribbon cables and their ports are very fragile.



## Step 23



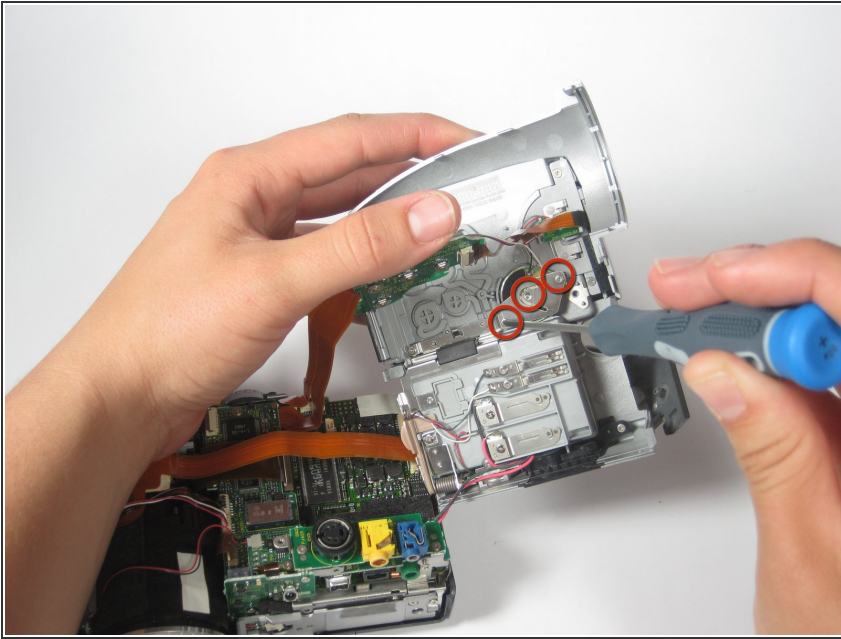
- Remove the circuit board you just unscrewed. It is the black rectangle that says "CAUTION" on it.

## Step 24



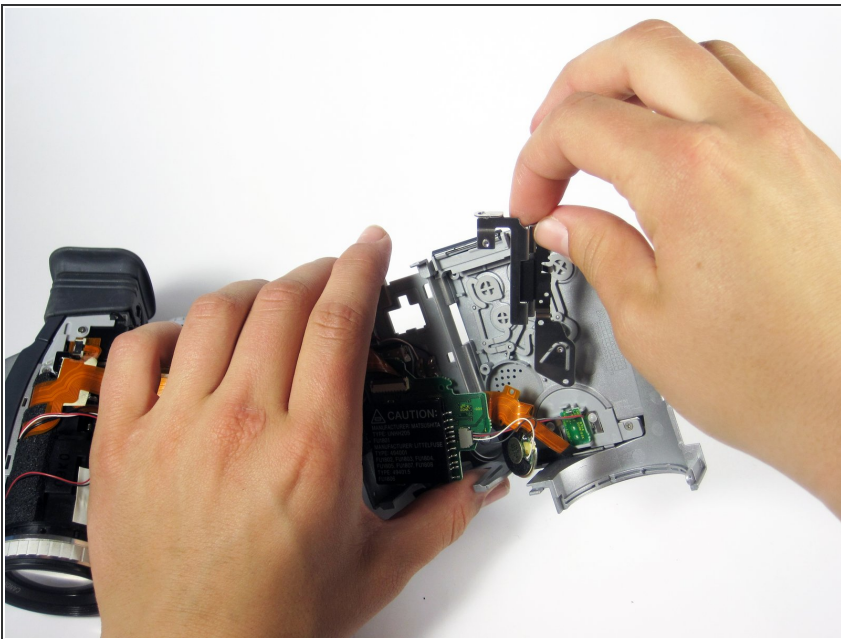
- Remove the #00 Philips 4mm screw shown.

## Step 25



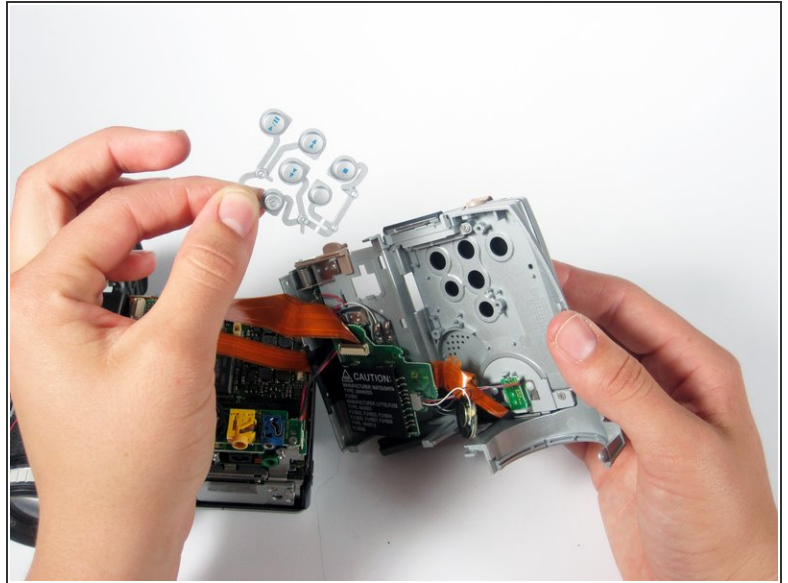
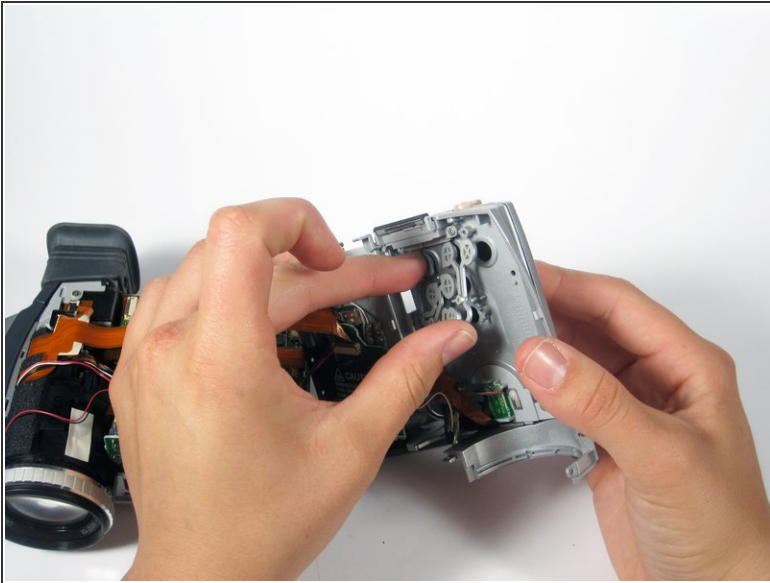
- Remove the 3 #00 Philips 4mm screws shown.

## Step 26



- Remove the metal piece partly covering the Button Pad

## Step 27



- Pull the button pad out of its chassis.

To reassemble your device, follow these instructions in reverse order.