



Canon PIXMA MP190 Ink Cartridge Replacement

This guide will illustrate how to replace the ink cartridges and show how to check that the ink cartridges are inserted properly.

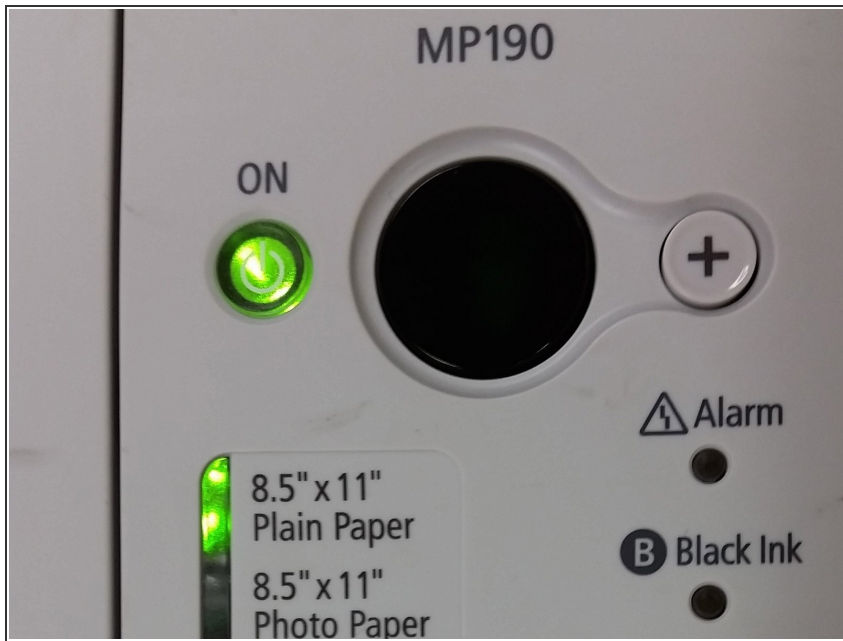
Written By: Garret Wescott



INTRODUCTION

Over the life of the printer the ink cartridges will have to be replaced multiple times. Before attempting to replace the ink cartridges ensure that the printer is working properly which will facilitate in the cartridge exchange.

Step 1 — Turn printer on.



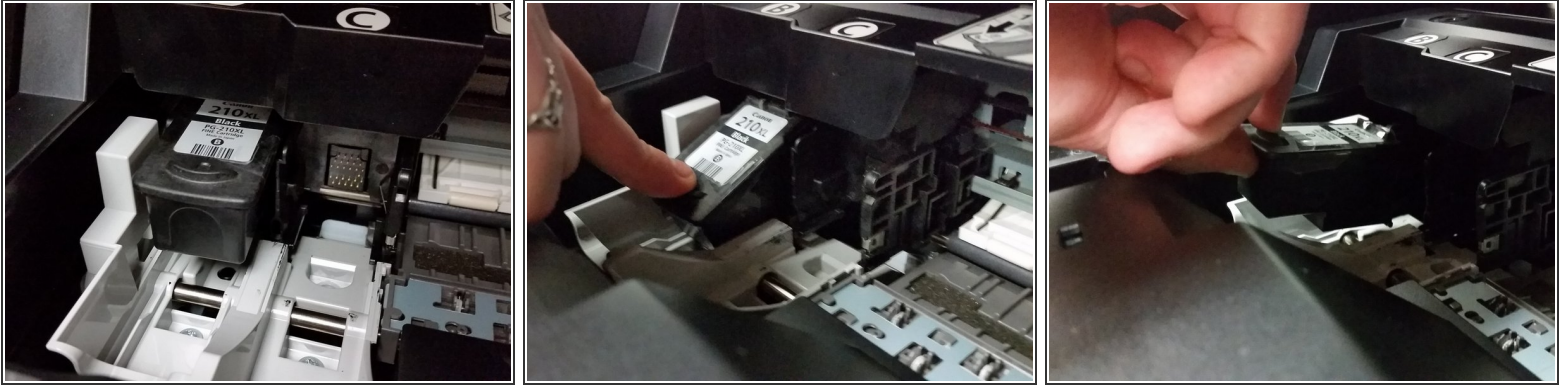
- The printer needs to be on in order to change the ink cartridges.

Step 2 — Locate Ink Cartridges



- To locate the ink cartridges the paper output tray must be in the lowered position.
- Next lift the scanning unit until the scanning support is vertical.
- Lower the scanning unit until the scanning unit support seats in the scanning unit support slot.

Step 3 — Remove Ink Cartridge



- Allow the printer to position the ink cartridge carrier into the ink cartridge removal location.
 - Before replacing the ink cartridge ensure the correct ink cartridge is installed.
- Push down on the front edge of the ink cartridge.
 - Observe the angle at which the ink cartridge is removed.
- Grasp ink cartridge and pull up and out to remove.

To reassemble your device, follow these instructions in reverse order.