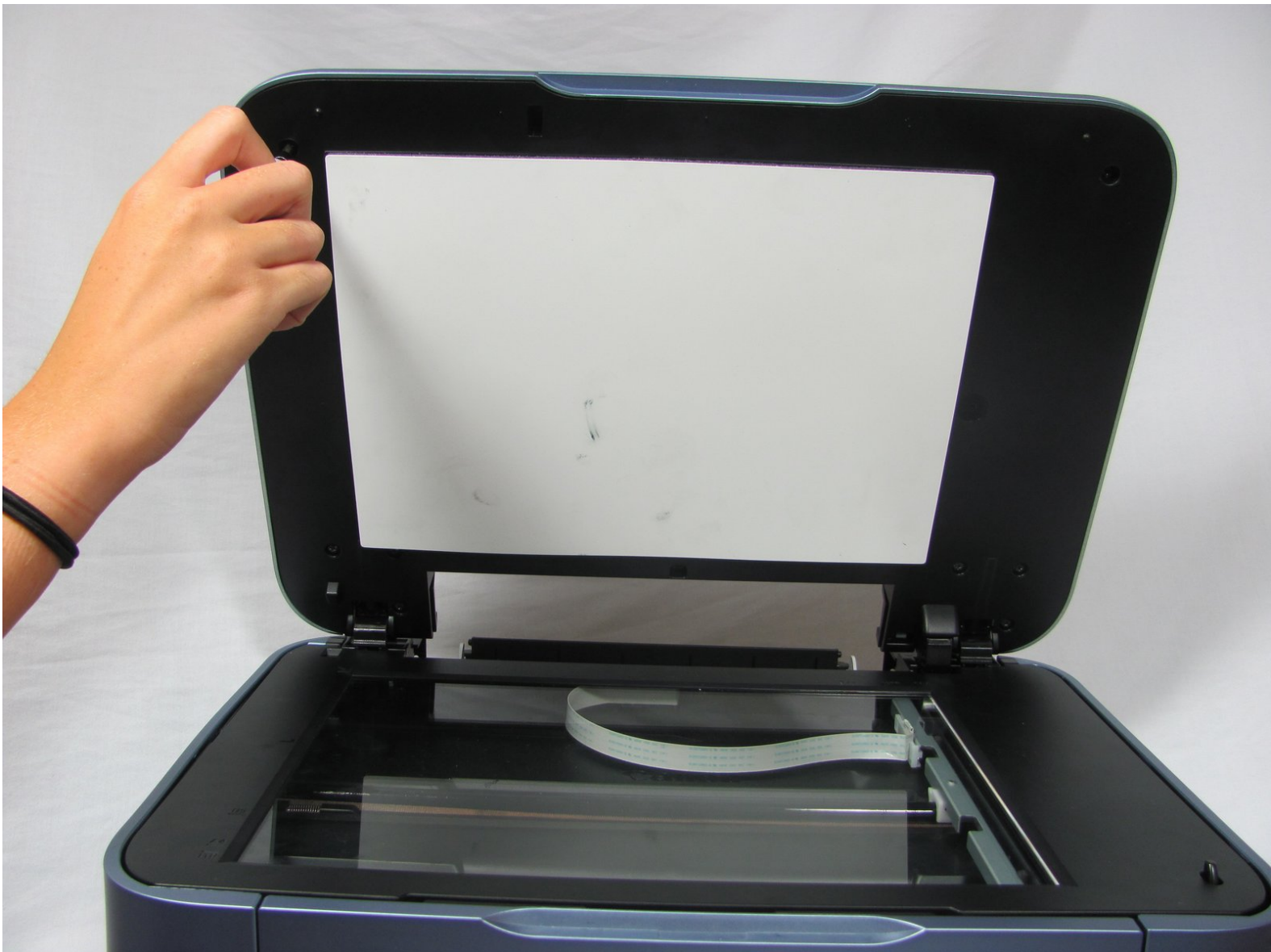




Canon PIXMA MP620B Command Screen Replacement

Replace your broken Command Screen. The Command Screen is located on the top of the printer and flips down for easy storage.

Written By: Val Fedorikhin



INTRODUCTION

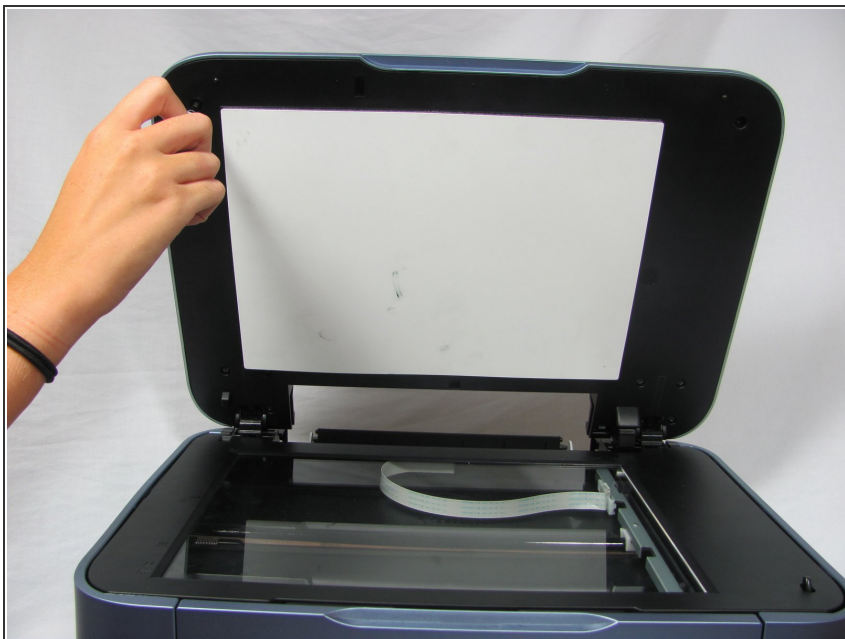
Replacing the command screen is relatively simple. You will have to pop off a few parts from the lid section of the printer in order to get at the back part of the command screen. Once you have access to the command screen and the attached chip, you can unplug a few wires and remove the screen with a philips-head screwdriver. After you have removed the screen, put in a replacement and close the printer back up. Good Luck!



TOOLS:

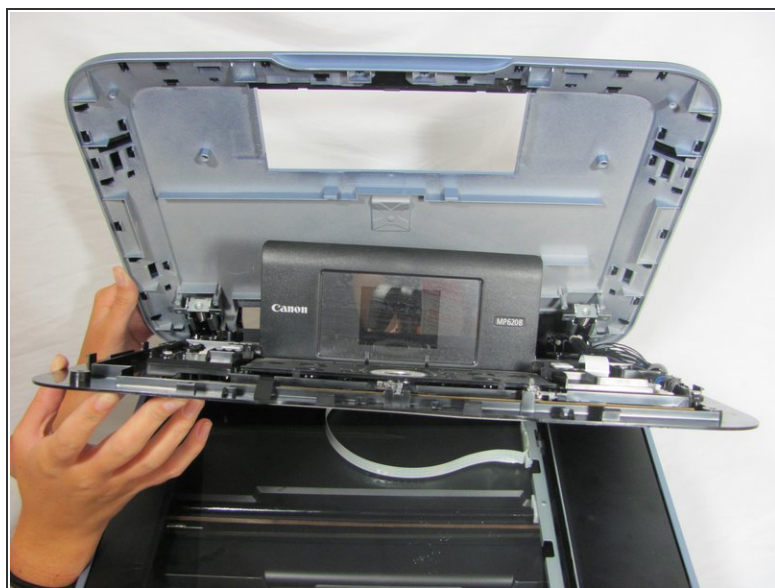
- [Phillips #0 Screwdriver](#) (1)
 - [Spudger](#) (1)
-

Step 1 — Open Printer Lid



- Open top lid of the printer to reveal the scanner

Step 2 — Pull apart the two large lid plates



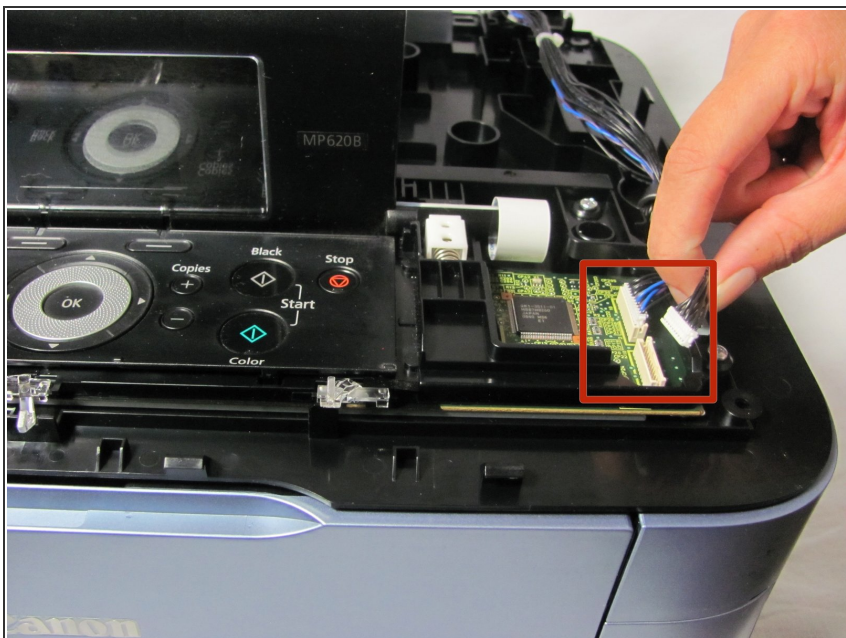
- Insert the spudger tool into the top lid in between the blue and the black panels.
- Use this tool to pry the two panels apart

Step 3 — Take apart the two sections



- After these two panels are separated, set the top panel to the side for now

Step 4 — Pull out wires leading to screen assembly



- Unplug the two wires shown at the right of the command screen

Step 5 — Unscrew screen assembly



- Unscrew the four screws shown to detach the command screen from the printer

Step 6 — Replace assembly



- Take the detached command screen off of the printer and replace.

To reassemble your device, follow these instructions in reverse order.